

Main Specifications

- ▼ **Size**
4"
- ▼ **Installation type**
Bottom mount (A)
- ▼ **Window**
Tempered glass (standard)
Safety glass (option)
- ▼ **Pressure connection**
Material: copper alloy
3/8" PT
Other thread types can be customized upon request
- ▼ **Pressure range**
0...1 to 28bar
- ▼ **Applicable fluid**
Liquid and gas that compatible with copper alloy
- ▼ **Ambient temperature**
-40°C to +60°C
- ▼ **Fluid temperature**
+60°C
- ▼ **Temperature error**
Every 12°C
max. error ±0.3% F.S
- ▼ **Protection level**
IP54 (standard) / IP65 (option)

Other Specifications

- ▼ **Ring**
Stainless steel
- ▼ **Ring mount**
Outside bayonet
- ▼ **Case**
SS304
- ▼ **Pointer**
Aluminum with black enamel
- ▼ **Dial face**
Blue and black scale
With adjustable screw
Pressure unit, scale, and color can be customized upon request
- ▼ **Measuring elements**
Bourdon tube
Material: copper alloy
- ▼ **Movement**
Copper alloy
- ▼ **Accuracy**
±2.5% (Option: ±1.6%)
- ▼ **Operating pressure**
Stabilization 3/4* full scale
Fluctuation 2/3* full scale
Impulse 1* full scale

4" Stainless Steel Case Pressure Gauge With Zero Adjustment

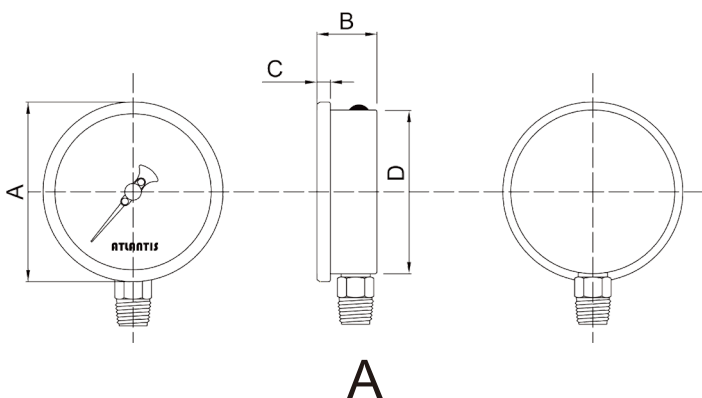
Model: ZSC-4

Introduction

This 4" black steel case pressure gauge with zero adjustment is suitable for general engineering or other application that required field pointer calibration.



Installation type



Due to the variety of customization, the picture is only for reference, please confirm the actual item with our sales. (If there is any change on specification, please take the latest version as standard.)

Features

- OEM services
- Stainless steel case design
- Adjustable screw for field pointer calibration

How to order

ZSC-4 4" Stainless Steel Case Pressure Gauge With Zero Adjustment										
Std.	Spec.	Code	Item	Code	Item	Code	Item	Code	Item	
B	Connection material	B	Copper alloy	O	Others	-	-	-	-	
B	Bourdon tube material	B	Copper alloy	O	Others	-	-	-	-	
3	Thread size	3	3/8"	O	Others	-	-	-	-	
P	Thread type	P	PT	O	Others	-	-	-	-	
Custom	Pressure range	0...1 to 28bar Pressure unit (psi, bar, kPa, kg/cm2, MPa, inHg, mmHg, cmHg, etc...) & single / dual scale can be customized upon request								
B	Accuracy	A	±1.6%	B	±2.5%	-	-	-	-	
/D	Other requests	/A	Third party notarized documents			/B	Inspection report			
		/C	Tag			/D	Customized dial (scale, color, dial, etc.)			
		/E	Case material SS316			/F	Epoxy coating			
		/G	Window – safety glass			/H	Silicone rubber sealed window			
		/I	Chrome-plated thread			-	-			

Order example: ZSC-4 - B - B - 3 - P - (0...1 to 10bar) - B + /D