

## Main Specifications

## ▼ Size

2.5"

## ▼ Installation type

Bottom mount (A) /  
Back mount with flange (BDC)

## ▼ Window

PC

## ▼ Pressure connection

Material: copper alloy  
Bottom mount: 1/8" NPT  
Back mount: 7/16" UNF  
(1/4" SAE)

Other thread spec. are  
available upon request

## ▼ Pressure range

## Low pressure gauge ▼

-76cmHg...0... 125 to 250 psi  
-76cmHg...0... 250 to 500 psi

## High pressure gauge ▼

0 ... 500psi to 800 psi

## ▼ Applicable refrigerants

R12 / R22 / R502 / R404A /  
R410A / R507 / R134a

For other special refrigerant  
measurement requirement  
please specify before order

## ▼ Ambient temperature

-40°C to +60°C

## ▼ Fluid temperature

+60°C

## ▼ Temperature error

Every 12°C

max. error:  $\pm 0.3\%$  F.S

## ▼ Protection level

IP52

## Other Specifications

## ▼ Ring

Steel with black enamel  
Snap-in

## ▼ Case

Red for high pressure gauge  
Blue for low pressure gauge  
Bottom mount material ▼  
Steel with black enamel /  
Chrome-plated steel  
Back mount material ▼  
Steel with black enamel / ABS

## ▼ Pointer

Aluminum with black enamel

## ▼ Dial face

Special dial face for  
refrigeration gauge  
Refrigerant-temperature  
corresponding scale  
Pressure unit (custom):  
kg/cm<sup>2</sup>, psi, bar, kPa,  
Temperature unit:  
°C, °F

With adjustable screw

## ▼ Measuring elements

Bourdon tube

Material:

Bronze (high pressure) /  
Phosphor bronze (low pressure)

## ▼ Movement

Copper alloy

## ▼ Accuracy

 $\pm 2.5\%$ 

## ▼ Operating pressure

Stabilization 3/4\* full scale

Fluctuation 2/3\* full scale

Impulse 1\* full scale

## Black Steel Case Refrigeration Gauge

### Model: F-EPG

### Introduction

F-EPG mechanical refrigeration pressure gauge adopts special dial face with various refrigerants application. It has widely applied in a variety of refrigeration systems pressure measurement, such as air conditioning, refrigerant filling equipment.

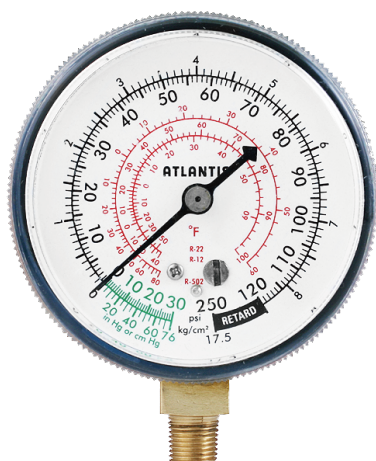


Back mount

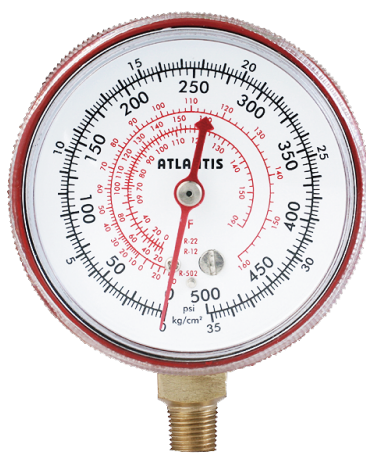
Due to the variety of customization, the picture is only for reference, please confirm the actual item with our sales.  
(If there is any change on specification, please take the latest version as standard.)

### Features

- OEM service
- Affordable price
- Suitable for various refrigerant measurement - R12 / R22 / R404A / R410A / R502 / R507 / R134a
- Special dial face for refrigeration gauge
- Retard scale on dial face for low pressure gauge
- Various thread specifications and installation type available for selection

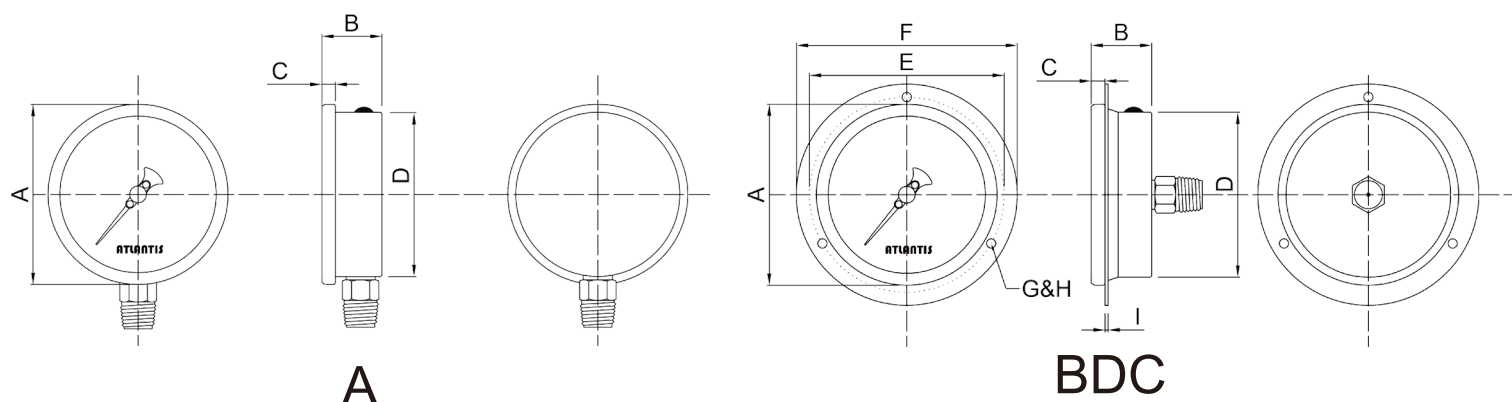


Low pressure gauge



High pressure gauge

## Installation type



## How to order

F-EPG		Black Steel Case Refrigeration Gauge									
		Code		Installation type							
		A		Bottom mount							
		BDC		Back mount with flange							
				Code		Pressure connection					
				1N		1/8" NPT (Only available for bottom mount type)					
				UNF		7/16" UNF (1/4" SAE) (Only available for back mount type)					
				O		Others (please specify)					
						Code		Refrigerant type (Custom)			
						Custom		R12 / R22 / R502 / R404A / R410A / R507 / R134a			
						O		Other type of refrigerant please specify			
								Code		Case	
								EP		Steel with black enamel	
								PP		Plastic (Only available for bottom mount type)	
								EC		Chrome-plated steel (Only available for back mount type)	
										Code	
										Other demands	
										/A	
										Third party notarized documents	
										/B	
										Inspection report	
								/C			
								Tag			
								/D			
								Peak hold pointer			
								/E			
								Chrome-plated thread			
								/F			
								Epoxy coating			
								/G			
								Customized dial (Scale, color, etc.)			
								/H			
								Internal stop pin (Overpressure protection)			
								/I			
								Indicator (Red, green, yellow) <Only available for back mount type>			
								/J			
								Accuracy ± 1.6%			
F-EPG		BDC	UNF	R22/R404A/R134a	EP	Example: F-EPG-BDC-UNF-R22/R404A/R134a-EP					