

## Main Specifications

## ▼ Size

2.5" , 3" , 3.5" , 4"

## ▼ Installation type

Bottom mount /

Bottom mount with flange

## ▼ Window

PC / Tempered glass /

Safety glass

## ▼ Pressure connection

Material: SS316

Welded connection

1/4" NPT

Other thread type available upon request.

## ▼ Pressure range

-30inHg...0...150psi to 300psi

## ▼ Applicable fluid

Liquid and gas that contain ammonia

## ▼ Ambient temperature

Dry / Silicone oil filled

-40°C to +120°C

Glycerin filled

-20°C to +60°C

## ▼ Fluid temperature

+60°C

## ▼ Temperature error

Every 12°C

max. error  $\pm 0.3\%$  F.S

## ▼ Protection level

IP54 (Standard) / IP65 (Option)

## Other Specifications

## ▼ Ring

Stainless steel

## ▼ Ring fixed

Inside bayonet / Crimp

## ▼ Case

SS 304

## ▼ Pointer

Aluminum with black enamel

## ▼ Dial

Blue and black scale

Pressure unit, scale, and color can be customized upon request

## ▼ Measuring elements

Bourdon tube

Material: SS316

## ▼ Movement

Stainless steel

## ▼ Accuracy

 $\pm 1.6\%$  (Option:  $\pm 1\%$ )

## ▼ Operating pressure

Stabilization 3/4\* full scale

Fluctuation 2/3\* full scale

Impulse 1\* full scale

# All Stainless Steel Refrigeration Ammonia Gauge Model: AM-SUS

## Introduction

AM series gauge are specially designed for measuring liquid and gas that contain ammonia.



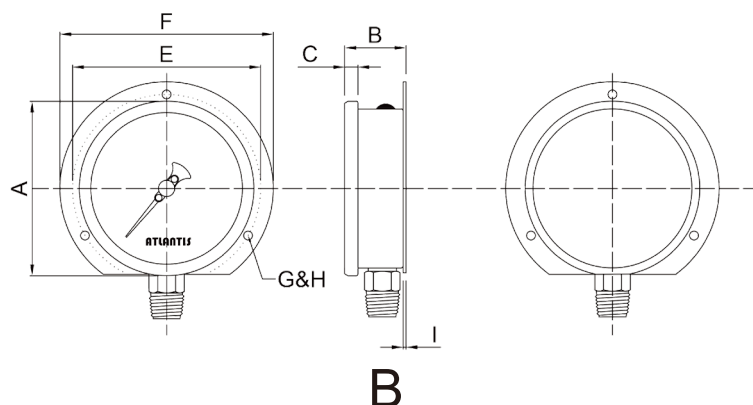
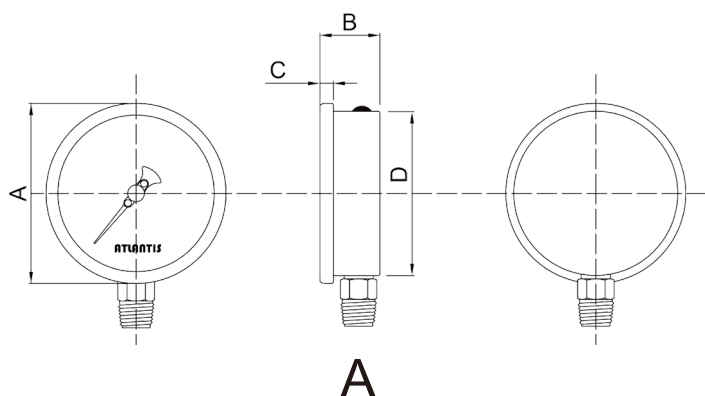
Due to the variety of customization, the picture is only for reference, please confirm the actual item with our sales.

(If there is any change on specification, please take the latest version as standard.)

## Features

- OEM service
- All stainless steel design
- Special dial for ammonia
- Temperature compensate for the characteristics of ammonia
- Liquid-filling for better vibration-proof performance and service life

## Installation type



## How to order

AM-SUS All Stainless Steel Case Refrigeration Gauge (For Ammonia Type)									
Std.	Spec.	Code	Item	Code	Item	Code	Item	Code	Item
04	Size	025	2.5	03	3"	035	3.5"	04	4"
A	Installation type	A	Bottom mount	B	Bottom mount with flange	—	—	—	—
316	Connection material	316	SS 316	O	Others	—	—	—	—
316	Bourdon tube material	316	SS 316	O	Others	—	—	—	—
2	Thread size	2	1/4"	O	Others	—	—	—	—
N	Thread type	N	NPT	O	Others	—	—	—	—
Custom	Pressure range	-30inHg...0...150psi to 300psi							
B	Accuracy	A	±1%	B	±1.6%	—	—	—	—
N	Liquid-filling	N	Dry	G	Glycerin	S	Silicone oil	O	Others
/D	Other requests	/A	Third party notarized documents			/B	Inspection report		
		/C	Tag			/D	Customized dial face (scale, color, unit, etc.)		
		/E	Install a diaphragm seal			/F	Internal stop pin for overpressure protection		
		/G	Dampened movement			/H	Window – Safety glass (Only available for 4" )		
		/I	Peak hold pointer			/J	Epoxy coating		
		/K	All stainless steel 316 case			/L	Adjustable pointer (Only available for 4" )		
		/M	Special square nut A Type			/N	Install a blow out back (Only available for 4" )		

Order example: AM-SUS - 04 - A - 316 - 316 - 2 - N - (-30inHg...0...150psi to 300psi) - B - N + /D