

1122KE/KF Special Application Gauge

FEATURES

- Specialized instrument for pump, turbine and compressor service
- Easy integration into system designs
- Compact case

TYPICAL USES

- Pumps
- Compressors
- Turbines
- Specialized OEM Equipment
- Machine Equipment



1122KE/KF
2½" Dial size



SPECIFICATIONS

Accuracy:	±2-1-2% of span (ASME B40.100 Grade A)
Size:	2½"
Ranges:	15 to 1,000 psi
Process Connection Location:	KE: Lower KF: Lower with Back Flange
Process Connection Size:	¼ NPT Male
Weight:	0.5 lbs.
Weather Protection:	Dry case: IP64 Liquid filled or field fillable: IP65 of NEMA 4X Hermetically sealed: IP66
Movement:	304 SS with glass filled polyester segment
Case Style:	Open Front
Mounting:	Stem, Surface
Dial:	White with black markings
Pointer:	Adjustable
Approvals:	CRN

KEY BENEFITS

- Ideal for satisfying installation requirements
- One year warranty

WETTED COMPONENTS

Bourdon Tube	Process Connection Material	Joints
316 SS	Aluminum Bronze	Welded

NON-WETTED COMPONENTS

Case	Ring	Window
304 SS	304 SS, Bayonet (removable)	Polycarbonate

MIN/MAX TEMPERATURE LIMITS

Version	Ambient	Process	Storage
Dry	-40°F to 200°F (-40°C to 93°C)	-40°F to 250°F (-40°C to 121°C)	-40°F to 250°F (-40°C to 121°C)

ORDERING CODE	Example:	25	1122KE	02	L	100#
Dial Size		25				
25 - 2½"						
Model			1122KE			
1122KE - Special Application Gauge						
1122KF - Special Application Gauge (back flange included)						
Case Design						
Blank - Open Front						
Process Connection Size						
02 - ¼ NPT Male				02		
Process Connection Location						
L - Lower					L	
Range (See range table on page 3 for all standard ranges)						
100# - 100 psi						100#

Data Sheet

1122KE/KF Special Application Gauge

STANDARD METRIC RANGES							
RANGE		DIAL GRADUATIONS		RANGE	DIAL GRADUATIONS		Outer Scale When Dual Range Specified psi
kg/cm ²	Bar	Figure Interval	Minor Graduation	kPa (kilopascal)	Figure Interval	Minor Graduation	
Pressure							
0/1	0/1	0.1	0.01	0/100	10	1	0/14
0/1.6	0/1.6	0.2	0.02	0/160	20	2	0/22
0/2.5	0/2.5	0.5	0.05	0/250	50	5	0/35
0/4	0/4	0.5	0.05	0/400	50	5	0/55
0/6	0/6	0.5	0.1	0/600	50	10	0/85
0/10	0/10	1	0.1	0/1000	100	10	0/140
0/16	0/16	2	0.2	0/1600	200	20	0/220
0/25	0/25	5	0.5	0/2500	500	50	0/350
0/40	0/40	5	0.5	0/4000	500	50	0/550
0/60	0/60	5	1	0/6000	500	100	0/850
Compound							
-1/0/1.5	-1/0/1.5	0.5	0.05	-100/0/50	50	5	30 inHg/0/20
-1/0/3	-1/0/3	0.5	0.05	-100/0/300	50	5	30 inHg/0/40
-1/0/5	-1/0/5	0.5	0.1	-100/0/500	50	50	30 inHg/0/70

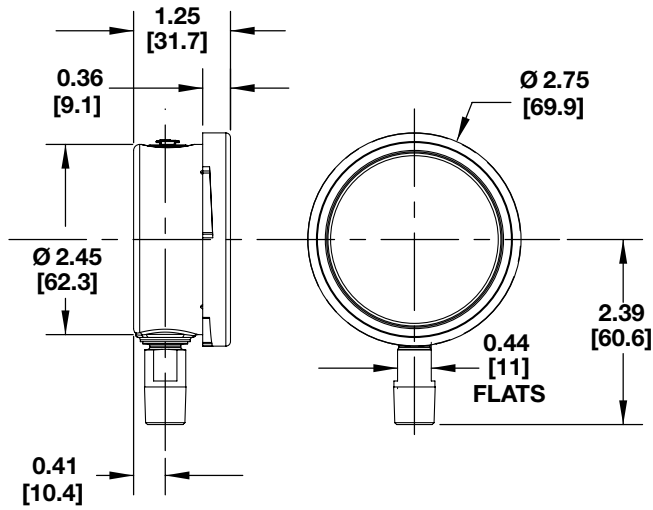
STANDARD RANGES		
PRESSURE (psi)	FIGURE INTERVAL	MINOR GRAD.
0/15	5	1
0/30	10	2
0/60	15	5
0/100	20	10
0/160	40	10
0/300	100	25
0/400	100	25
0/600	150	50
0/1000	250	50

1122KE/KF Special Application Gauge

DIMENSIONS in [] are millimeters

For reference only, consult Ashcroft for specific dimensional drawings

2½" 1122KE Lower Connect



2½" 1122KF Lower Connect

