

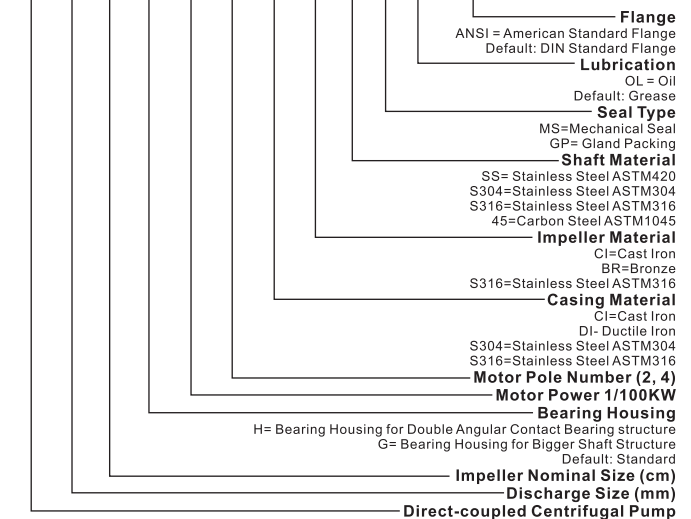
EAD Series



Model Form

For example,

EAD 65 / 20 G - 1850 2 - CI - BR - SS - MS - OL - ANSI

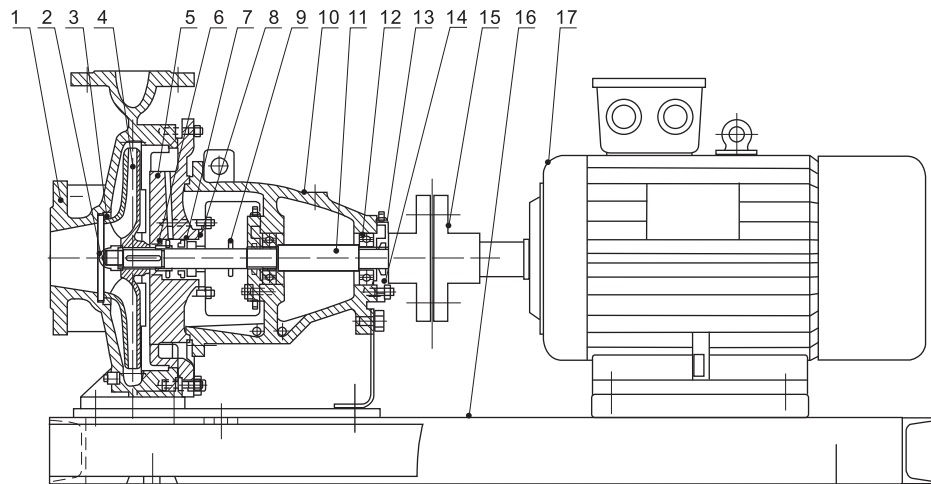


Description

EAD pumpsets are comprised of EA pump and standard electric motor connected by coupling and mounted on a steel metal base. The advantage is that we could easily select the motor and couple for the EA pump. The coupling adopts the flexible pin and bush design, which makes the pumpset more stable with minimal vibration and longer life-span as compared with the 'claw-type' coupling. The steel metal base is joined by profiled steel bar for strength. Fitting surface where the pump and motor foots seated, are lapped by machine with high precision. The coupling guard is designed to cover the coupling to provide greater safety and security.

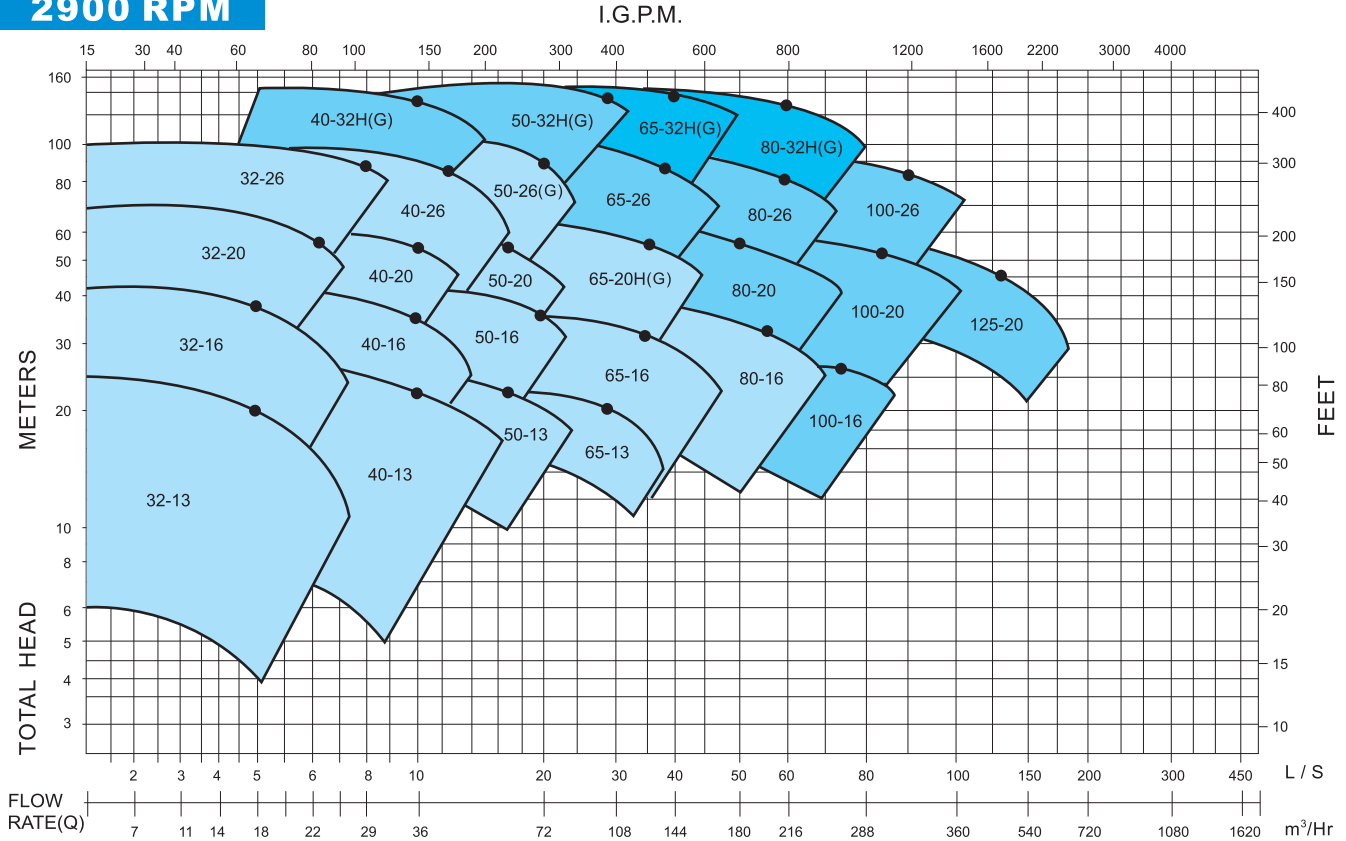
Structure Drawing

- | No. | Spare Part |
|-----|------------------|
| 1 | Volute casing |
| 2 | Impeller nut |
| 3 | Wear ring |
| 4 | Impeller |
| 5 | Casing cover |
| 6 | Shaft sleeve |
| 7 | Mechanical seal |
| 8 | Seal cover |
| 9 | Slinger |
| 10 | Bearing housing |
| 11 | Shaft |
| 12 | Bearing |
| 13 | Bearing cover |
| 14 | Support foot |
| 15 | Coupling |
| 16 | Steel metal base |
| 17 | Electric motor |

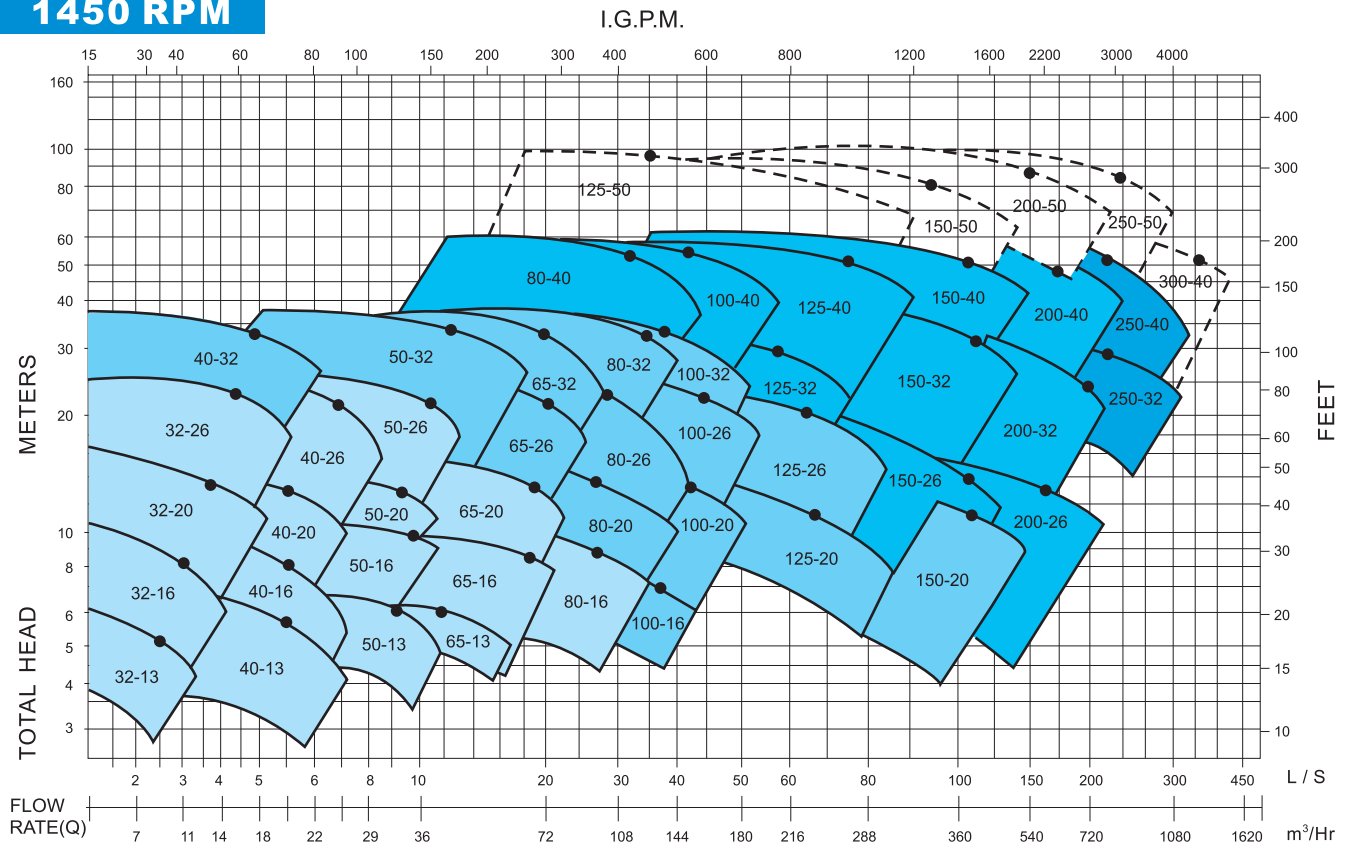


EA EAD EAZ Series-50Hz Performance

2900 RPM

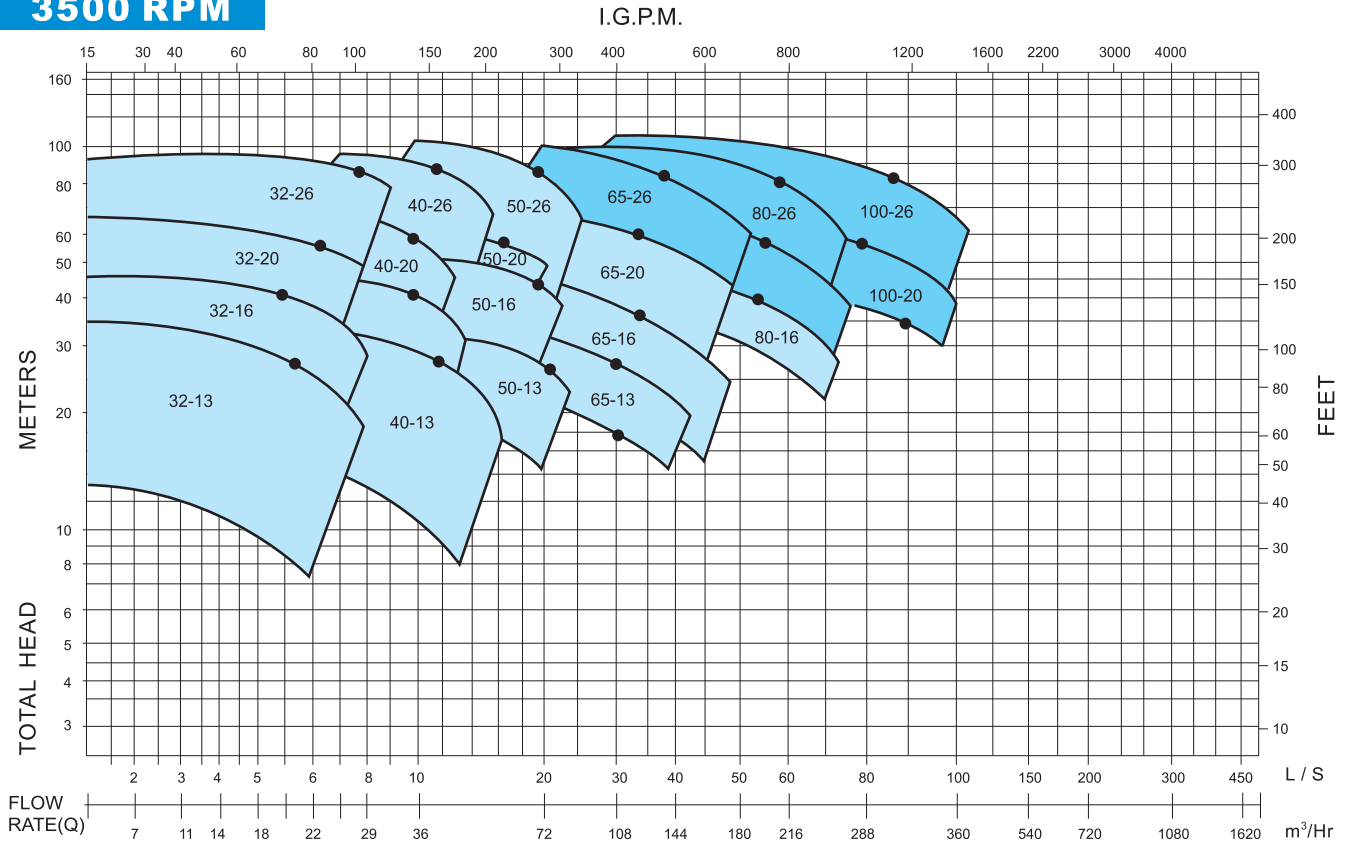


1450 RPM



EA EAD EAZ Series-60Hz Performance

3500 RPM



1750 RPM

