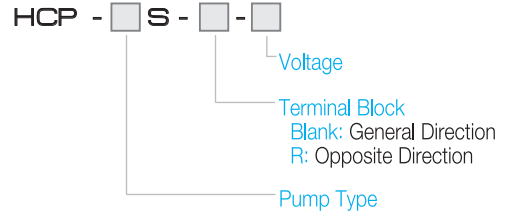




### Model



### Feature

1. 펌프와 모터가 일체형으로 소형, 경량의 펌프
  2. 소형으로 설치공간의 제약이 적음
  3. MECHANICAL SEAL이 장착되어 장시간의 공회전은 금지함 (공회전 30초 이상 금지)
  4. 반드시 펌프구동전 펌프 자흡실내 사용유 넣은 후 구동
1. A compact, lightweight single-unit pump.
  2. The small, design means less installation limitations.
  3. Prolonged idling is prohibited due to the installed mechanical seal, (Idling for more than 30 seconds is prohibited)
  4. Sufficient quantities of oil need to be supplied to the self-priming compartment before use.

### Structure

- 펌프와 모터가 일체형으로 된 소형의 자흡식 펌프
- 흡입부로 파이프를 연결하여 사용유를 흡입하는 형식의 펌프
- A single-unit small self-priming pump
- A pipe is connected to the suction part to suck in oil.

### Pump Spec.

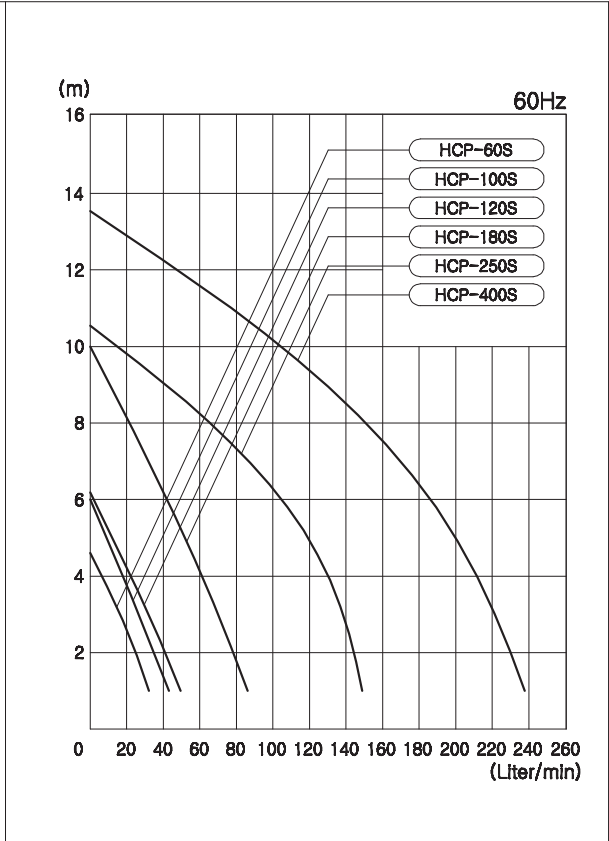
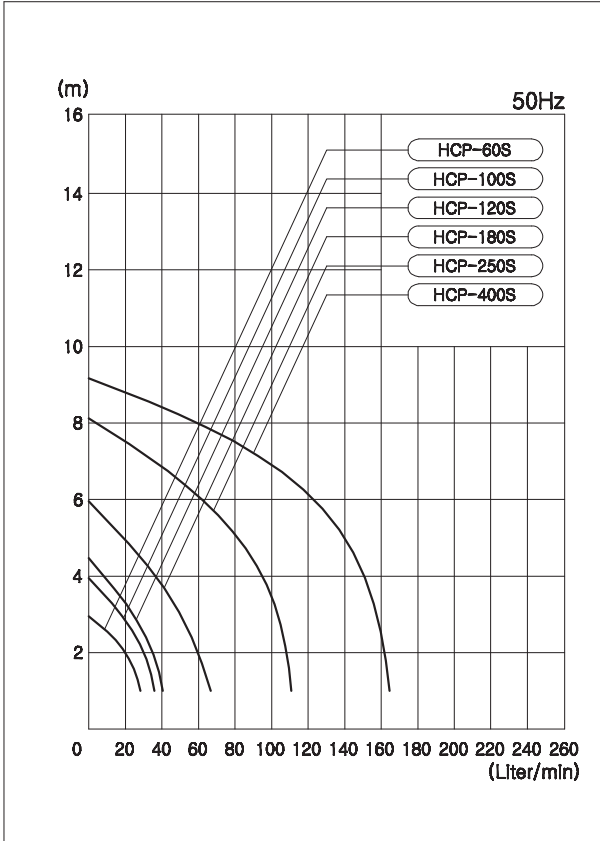
Specification Type	MOTOR						PUMP		
	OUTPUT (W)	FREQUENCY (Hz)	VOLTAGE (V)	CURRENT (A)	PHASE	POLES	TOTAL HEAD (m)	DIS. VOL (ℓ/min)	PIPE SIZE (PT)
HCP-60S	60	50	200 380	0.42 0.24	3	2	2	20	3/8"
		60	200/220 380	0.45 0.26				25	
HCP-100S	100	50	200 380	0.51 0.3	3	2	2	30	3/8"
		60	200/220 380	0.55 0.32				36	
HCP-120S	120	50	200 380	0.56 0.33	3	2	2	35	3/8"
		60	200/220 380	0.6 0.35				42	
HCP-180S	180	50	200 380	0.93 0.53	3	2	3	58	1/2"
		60	200/220 380	1.0 0.57				70	
HCP-250S	250	50	200 380	1.4 0.8	3	2	4	95	3/4"
		60	200/220 380	1.5 0.86				130	
HCP-400S	400	50	200 380	2.4 1.4	3	2	5	140	1"
		60	200/220 380	2.5 1.5				200	

### Packing Spec.

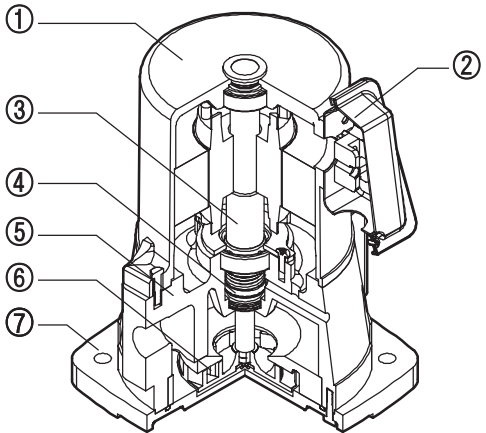
MODEL NAME	PACKING SIZE(cm)	WEIGHT(kg)	
		PUMP	PACKING
HCP-60S	18(W) x 16(L) x 26(D)	8	9
HCP-100S			
HCP-120S			
HCP-180S	26(W) x 21(L) x 21(D)	11	12
HCP-250S	26(W) x 22(L) x 23(D)	12	13
HCP-400S	34(W) x 22(L) x 23(D)	16	17

Performance Curve

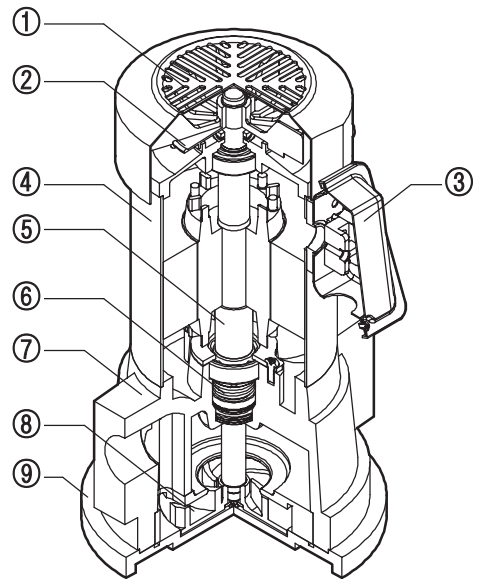
Oil for testing: ISO-VG2, Temperature 20°C



- 비수용성 절삭유 사용시 32cSt 이하의 점도를 사용하여 하며, 수용성 절삭유에 비하여 펌프성능(압력·유량)이 저하됨.
- When using non water-soluble cutting fluid, Viscosity must be under 32cSt, Pump performance (pressure and quantity) will decrease compared to water-soluble cutting fluid.



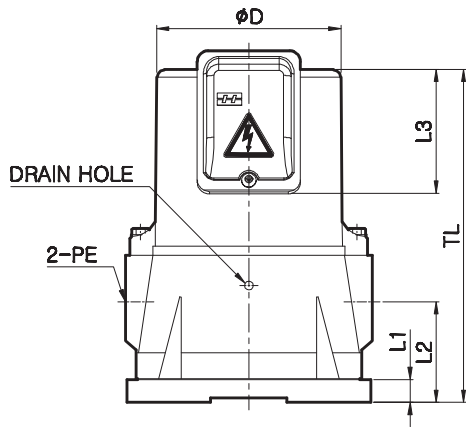
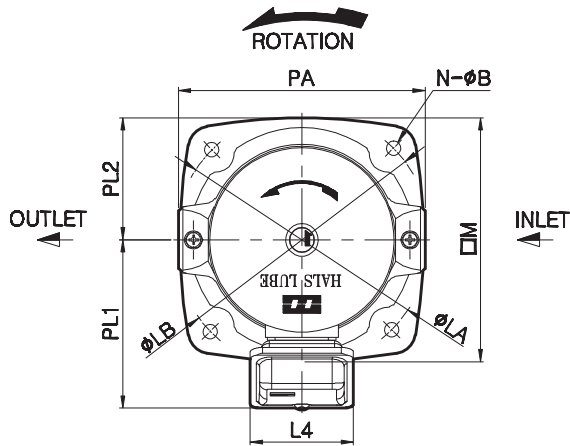
No	PART NAME	No	PART NAME
1	MOTOR	5	PUMP BODY
2	TERMINAL BLOCK	6	IMPELLER
3	SHAFT	7	BASE
4	MECHANICAL SEAL	-	-



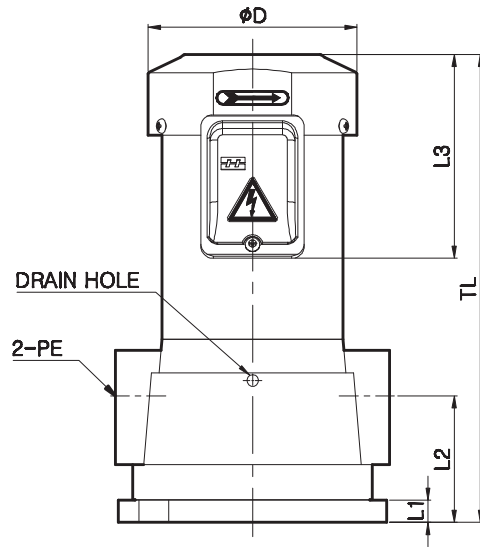
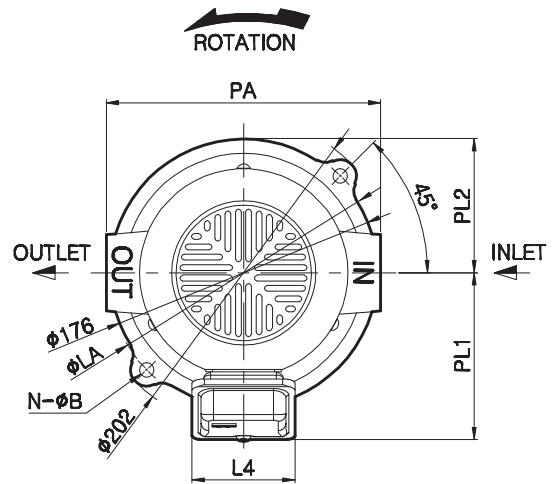
No	PART NAME	No	PART NAME
1	FAN COVER	6	MECHANICAL SEAL
2	FAN	7	BODY
3	TERMINAL BLOCK	8	IMPELLER
4	MOTOR	9	BASE
5	SHAFT	-	-

## External Figure

### HCP-60S~250S



### HCP-400S



## Dimension

※ LA, LB형 ( )안의 치수는 수출용임 [LA, LB ( ) are products for export]

Type	Item	ø D	L1	L2	L3	L4	PE(PT)	TL	LA	LB	N-ø B	PA	M	PL1	PL2
<b>HCP-60S</b>		95	56	55.5	88	68	3/8"	201	132(132)	150(130)	4-7	130	130	95	65
<b>HCP-100S</b>		95	56	55.5	88	68	3/8"	201	132(132)	150(150)	4-7	130	130	95	65
<b>HCP-120S</b>		95	15	55.5	88	68	3/8"	201	132(132)	150(150)	4-7	130	130	95	65
<b>HCP-180S</b>		121	15	66	81	68	1/2"	201	167(160)	170(164)	4-10	162	160	110	80
<b>HCP-250S</b>		121	20	71	81	68	3/4"	225	167(160)	170(170)	4-10	162	160	110	80
<b>HCP-400S</b>		137	14.5	83	133	68	1"	307	180(180)	-	2-10	180	-	110	88