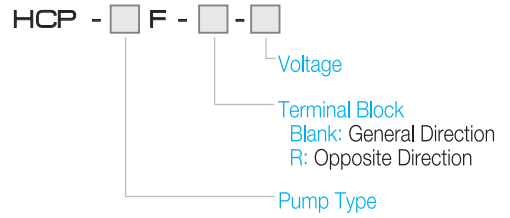




Structure

- 펌프부가 탱크내 침수되어 구동하는 펌프
- 탱크 깊이와 성능에 따라 펌프 선택이 다양하고 별도의 기름마중 없이 사용이 가능함
- A pump that operates with the pump part submerged in the tank,
- Different pumps can be selected according to tank depths, and can be used without separate oil priming.

Model



Feature

1. 펌프와 모터가 동축이나, 분리된 형태
 2. 소형의 단각형 탱크의 깊이에 따라 다양한 선택가능
 3. MECHANICAL SEAL 등 별도의 SEAL이 없는 구조
 4. 연마입자가 혼합된 연삭기를 포함한 광범위한 부분의 적용이 가능
1. The motor and the pump have the same shaft but are separated.
 2. Various selections can be made according to the depths of the compact low-set tanks.
 3. A structure with no additional seals such as a mechanical seal
 4. Can be applied to a wide range of parts including grinding machine with mixed abrasive grain.

Pump Spec.

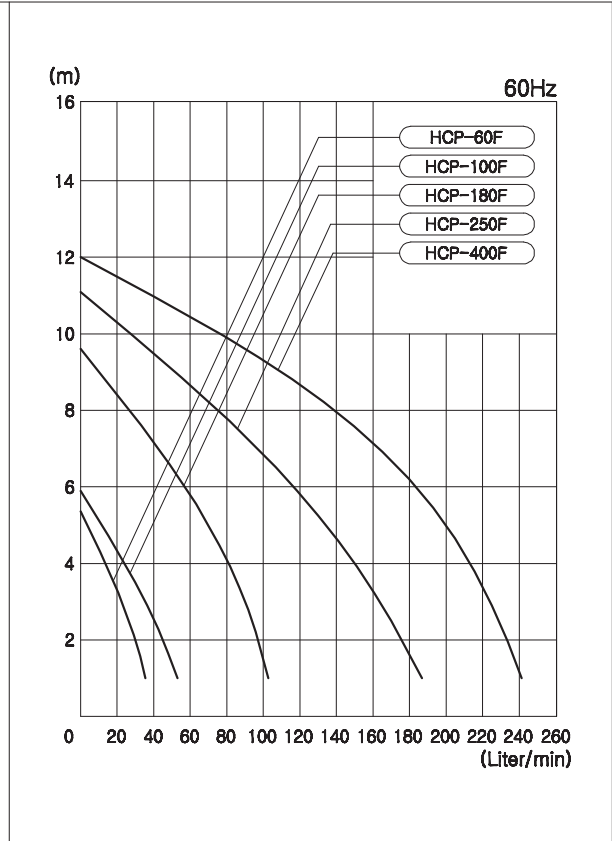
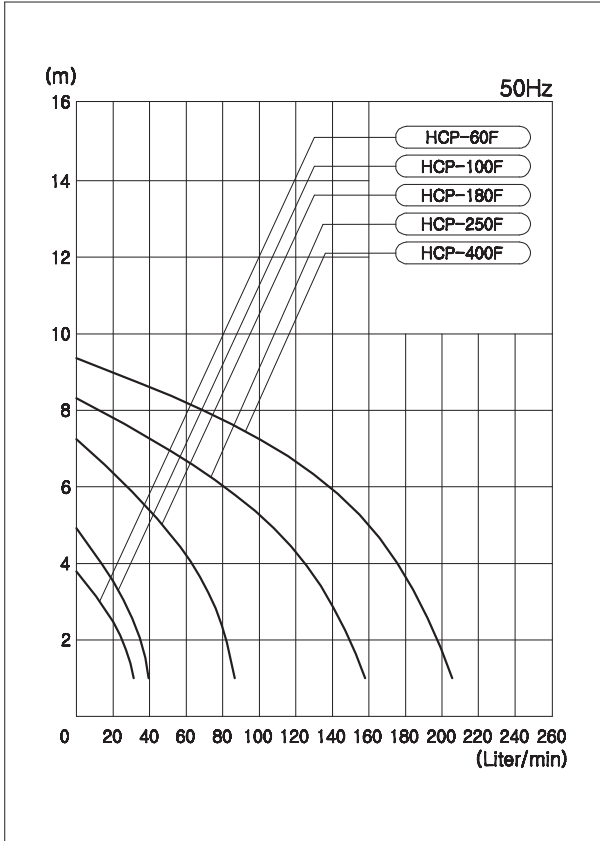
Specification Type	MOTOR						PUMP		
	OUTPUT (W)	FREQUENCY (Hz)	VOLTAGE (V)	CURRENT (A)	PHASE	POLES	TOTAL HEAD (m)	DIS. VOL (ℓ/min)	PIPE SIZE (PT)
HCP-60F	60	50	200 380	0.42 0.24	3	2	2	25	3/8"
		60	200/220 380	0.45 0.26				32	
HCP-100F	100	50	200 380	0.51 0.3	3	2	2	37	3/8"
		60	200/220 380	0.55 0.32				47	
HCP-180F	180	50	200 380	0.93 0.53	3	2	3	75	1/2"
		60	200/220 380	1.0 0.57				90	
HCP-250F	250	50	200 380	1.4 0.8	3	2	4	125	3/4"
		60	200/220 380	1.5 0.86				150	
HCP-400F	400	50	200 380	2.4 1.4	3	2	5	160	1"
		60	200/220 380	2.5 1.5				200	

Packing Spec.

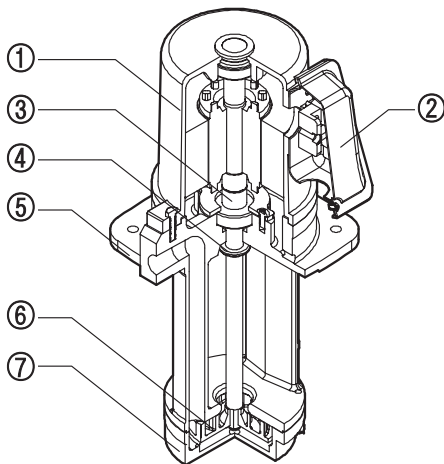
MODEL NAME	PACKING SIZE(cm)	WEIGHT(kg)	
		PUMP	PACKING
HCP-60F	34(W) x 20(L) x 17(D)	7	8
HCP-100F			
HCP-180F	40(W) x 22(L) x 21(D)	11	12
HCP-250F	48(W) x 22(L) x 22(D)	15	16
HCP-400F	58(W) x 22(L) x 22(D)	17	18

Performance Curve

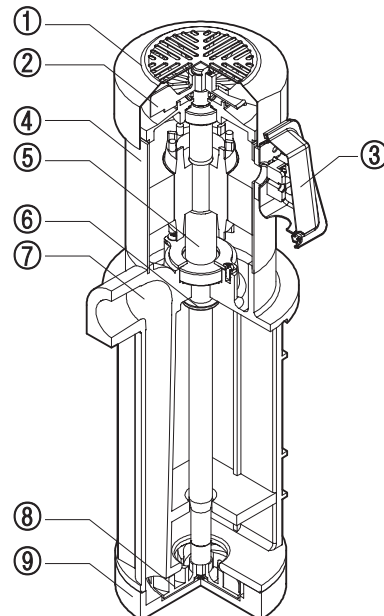
Oil for testing: ISO-VG2, Temperature 20 c



- 비수용성 절삭유 사용시 32cSt 이하의 점도를 사용하여야 하며, 수용성 절삭유에 비하여 펌프성능(압력·유량)이 저하됨.
- When using non water-soluble cutting fluid, Viscosity must be under 32cSt, Pump performance (pressure and quantity) will decrease compared to water-soluble cutting fluid.



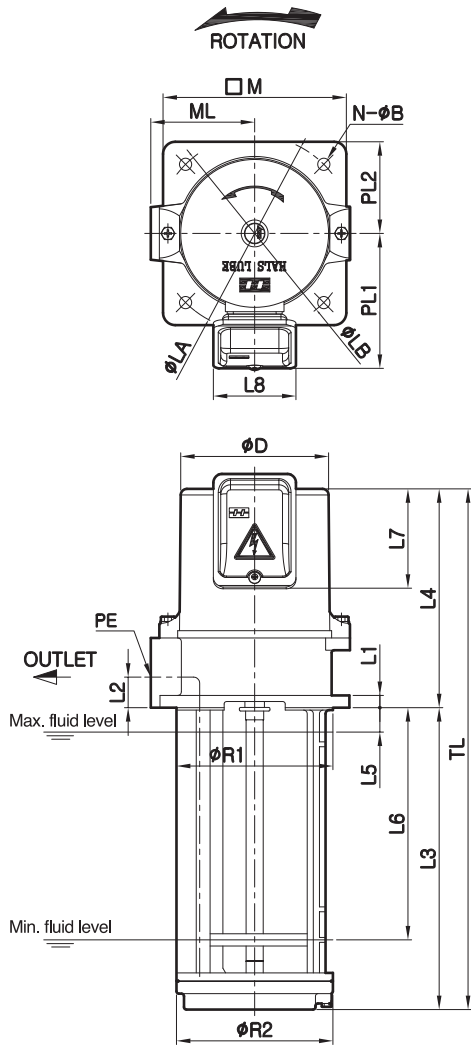
No	PART NAME	No	PART NAME
1	MOTOR	5	PUMP BODY
2	TERMINAL BLOCK	6	IMPELLER
3	SHAFT	7	IMPELLER HOUSING
4	STOPPER	-	-



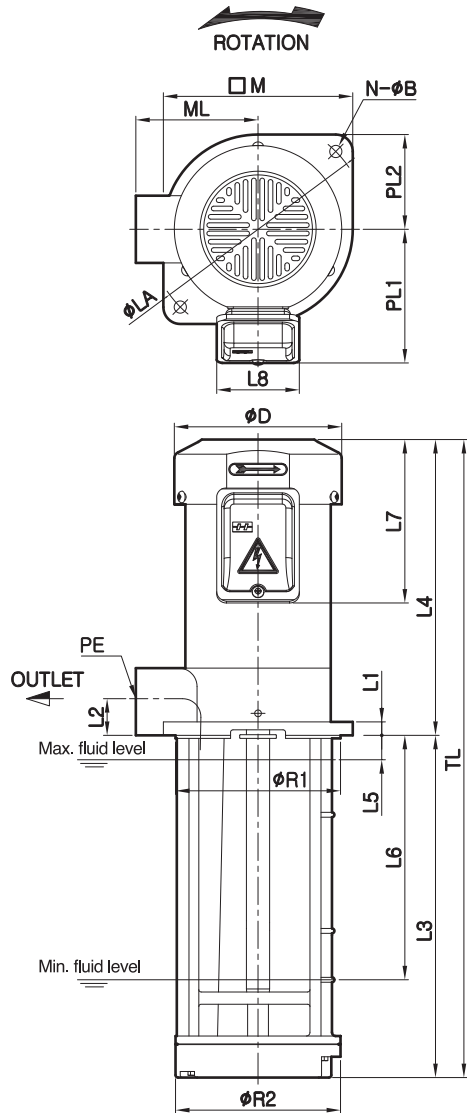
No	PART NAME	No	PART NAME
1	FAN COVER	6	STOPPER
2	FAN	7	BODY
3	TERMINAL BLOCK	8	IMPELLER
4	MOTOR	9	IMPELLER HOUSING
5	SHAFT	-	-

External Figure

HCP-60F~250F



HCP-400F



Dimension

※ LA, LB형 ()안의 치수는 수출용임 [LA, LB () are products for export]

Type	Item	φ D	L1	L2	L3	L4	L5	L6	L7	L8	PE(PT)	TL	R1	R2	LA	LB	N-φB	PL1	PL2	M	ML
HCP-60F		94	8	15	155	150	20	90	93	68	3/8"	305	90	90	130 (132)	130 (130)	4-7	94	64	128	71
HCP-100F		94	8	15	155	150	20	90	93	68	3/8"	305	90	90	130 (132)	130 (134)	4-7	94	64	128	71
HCP-180F		121	10	20	175	171	20	105	93	68	1/2"	346	115	115	160 (160)	160 (134)	4-10	109	72.5	145	80
HCP-250F		121	10	25	250	180	20	190	93	68	3/4"	427	128	128	160 (160)	160 (170)	4-10	109	75	150	85
HCP-400F		137	11	30	280	232	20	200	143	68	1"	512	135	135	180 (180)	-	2-10	110	77.5	155	100