

Air Drive Fixed Quantity / Proportional Oil Supply Pump

에어구동형 정량/비례급유 펌프

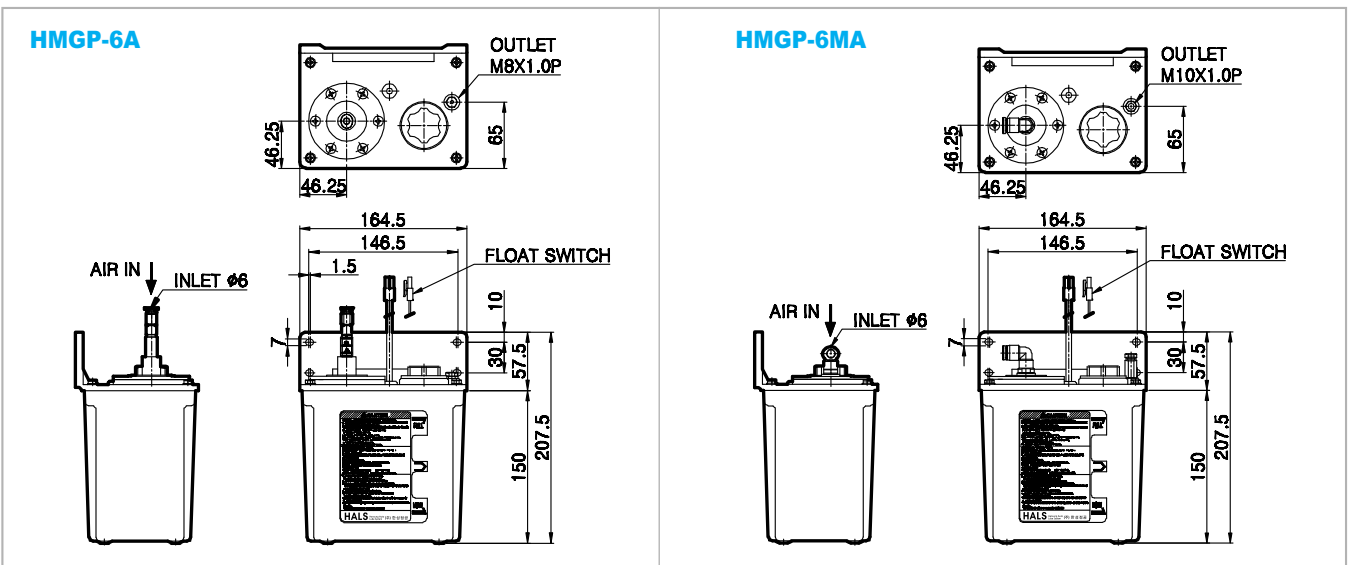


Feature

- HMGP-6A**
 - 압축공기 공급으로 간단한 윤활유 공급이 가능하다.
 - 펌프 구동부를 다이캐스팅 AL제작하여 내구성이 우수하다.
 - Control Bar를 통해 손쉽게 토출량 조절이 가능하다.
 - 전기종에 Suction Filter가 부착되어 이물질 혼입이 없다.
- HMGP-6MA**
 - HMV Series인 정량 밸브와 사용되는 정량급유용 펌프이다.
 - 원거리 이송이 가능하다.

- HMGP-6A**
 - Easy lubricating oil supply through supplying compressed air
 - The pump drive parts are produced with die casting molds for superior durability
 - Easy control bar operation for free control of the quantity of discharge
 - The attached suction filter on every model prevents suction of foreign substances
- HMGP-6MA**
 - A fixed quantity oil supply pump used with the HMV Series fixed quantity valve.
 - It is capable of long distance delivery.

External Figure



Model

HMGP - 6 - 04 - T -

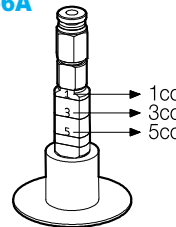
- Blank: Without Float S/W
- F: Attach Float S/W
- 2: Resin Tank
- Option: Steel Tank
- A: Proportional
- MA: Fixed Quantity

Pump Spec.

PUMP SPEC.		
MODEL NAME	HMGP-6A	HMGP-6MA
DISCHARGE PRESSURE	10kg/cm ²	20kg/cm ²
USING OIL	32~220(cSt)	
FILTER	80 Mesh	
TANK CAPACITY	2Liter	
DISCHARGE AMOUNT	0~6cc/st	6cc/st
PACKING SPEC.		
PACKING SIZE(cm)	15(W) x 18(L) x 26(D)	
WEIGHT(kg)	PUMP	1
	PACKING	2

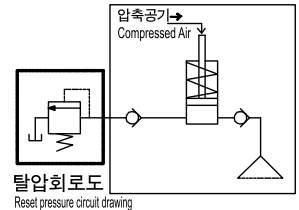
Operating Guide

HMGP-6A



HMGP-6A 유량조정 Control Bar 회전으로 손쉽게 유량조절이 가능
HMGP-6A oil quantity adjustment
The oil quantity can easily be adjusted by turning the control bar

HMGP-6MA



Air 혼입부에 Sol V/V를 장착하여 펌프의 작동시간을 조정하여야 한다.
The pump operation time needs to be adjusted by attaching a Sol V/V at the air adulteration section.