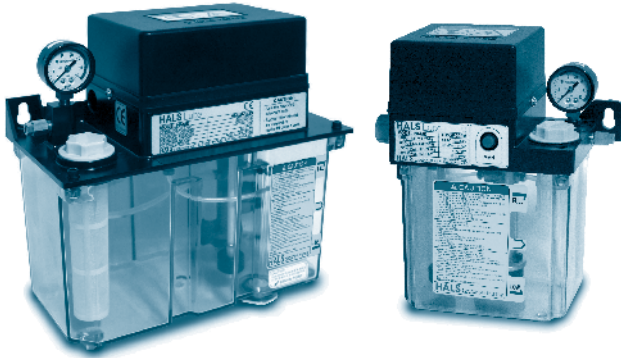


HMGP 303S & 303M

External Control Fixed Quantity Oil Supply Pump

외부제어용 정량급유 펌프



Model

HMGP - [] - O1 - T [] - [] / [] - [] - []

- Blank: Without Manual S/W
- M: Attach Manual S/W
- 110: 110V, 220: 220V
- Blank: Without Pressure S/W
- P: Attach Pressure S/W
- Blank: Without Float S/W
- F: Attach Float S/W
- 2: Resin Tank (303M)
- 4: Resin Tank (303S)
- Option: Steel Tank
- 303M: 2Liter Type
- 303S: 4Liter Type

Feature

1. 신뢰성이 높은 외부제어식 정량급유용 오일 펌프이다.
2. 폭넓은 분야에 활용이 되며 특히 고정밀, 대형 공작기계 정량 급유용 펌프로 적합하다.
3. Pump의 주요 구동 연결부를 일체형 다이캐스팅으로 제작하여 내구성이 우수하다.
4. 외부제어식으로 자유로운 펌프제어가 가능하다.
5. 유면 저하 감지 기능 및 압력 저하 감지 기능이 내장되어 있다.

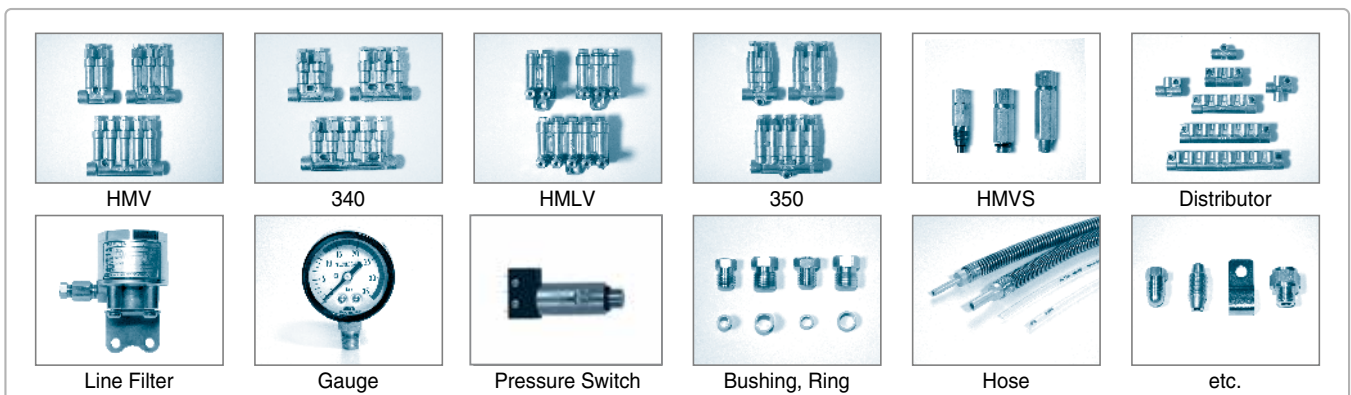
1. A highly reliable externally controlled fixed quantity oil supply pump.
2. It is used across a wide range of fields, and is especially suitable as a fixed quantity oil supply pump for high-precision, large machine tools.
3. The pump's main drive connection parts are made of single die casting pieces to ensure excellent durability.
4. An external control type that allows free pump control.
5. It has a built-in ullage decrease detector and a pressure decrease detector.

Pump Spec.

PUMP SPEC.			
MODEL NAME	HMGP-303S	HMGP-303M	
PUMP TYPE	GEAR PUMP		
DISCHARGE PRESSURE	17kg/cm ²		
PRESSURE GAUGE	0~35kg/cm ²		
USING OIL	32~220(cSt)		
FILTER	80 Mesh		
TANK CAPACITY	4Liter	2Liter	
DISCHARGE AMOUNT	150cc/min		
FLOAT S/W	Contact type A contact (NO) ON at Low level		
PRESSURE S/W	Contact type A contact (NO) Operation pressure : 12±1 bar ON		
OIL SUPPLY CONTROL DEVICE	External control		
MOTOR SPEC.			
INPUT	80W		
PHASE	1 ∅		
VOLTAGE	110V	200V	220V
CURRENT	1.8A/1.25A	1.0A	1.35A/0.85A
FREQUENCY	50/60Hz		
PACKING SPEC.			
PACKING SIZE(cm)	36(W) x 18(L) x 31(D)	23(W) x 14(L) x 28(D)	
WEIGHT(kg)	PUMP	4	3.5
	PACKING	4.5	4

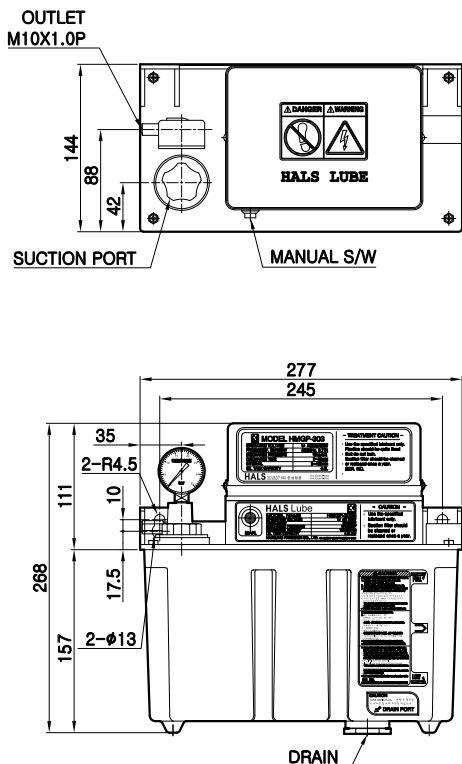
※ Motor-3200r.p.m 기준

Components

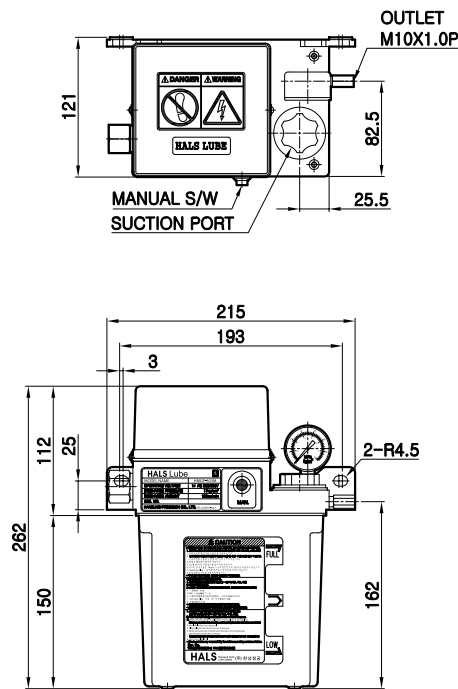


External Figure

HMGP-303S



HMGP-303M

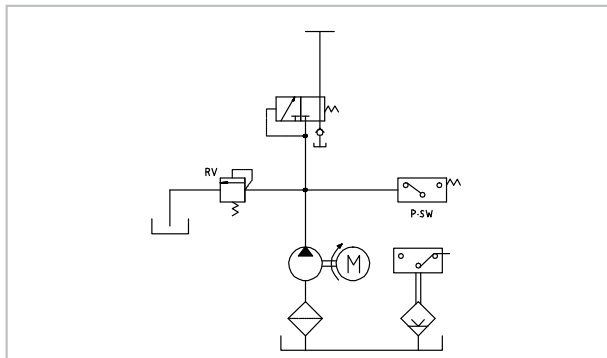


Operating Guide

- 1) 별도의 제어장치가 없고 전원을 연결하고 전기를 공급하면 펌프가 작동한다. HMGP-303과 동일방법으로 휴지시간과 구동시간을 반복적으로 작동시키면 된다.
- 2) 펌프의 최대구동 시간은 4분이고, 휴지시간은 구동시간의 4배로 설정하여야 한다.
※ 정확한 정량밸브 작동을 위해서 시간 준수가 필요하다.
- 3) 시험구동 및 배관내 에어 빼기용으로 Manual Button을 사용할 수 있다.
- 4) Pump는 출고시 17kg/cm²으로 설정되나, 사용유 점도 변화(사용유 점도, 주위온도)에 따라 차이가 있을 수 있다.
- 5) Pressure Switch는 Pump를 구동시켜 일정한 시간내 설정된 압력 도달 여부를 감지하여, 정상 작동 할 경우 접점신호를 기계 제어장치로 보내어 자동작을 확인할 수 있다.

- 1) It does not have a separate control device, and the pump operates automatically once power is connected and electricity is supplied. The pause and operation times can be set in the same way as for HMGP-303.
- 2) Maximum operation time of the pump is 4 minutes, and the pause time needs to be set at 4 times the operation time.
※ Time needs to be followed for precise fixed quantity valve operation.
- 3) The manual button can be used for test operations and to take out air from the pipes.
- 4) The pump is set at 17kg/cm² when released from the factory, but this may differ depending on the changes in the viscosities of the oils used (oil viscosity, surrounding temperature).
- 5) The pressure switch can operate the pump and detect whether or not the set pressure has been reached within a given time, and send contact signals to the machine control device during normal operation to check for errors.

Hydraulic circuit drawing



Wiring Diagram

