

## External Control Continuous Oil Supply Pump

외부제어용 연속급유 펌프



### Model

HMGP - 205C - 03 - T   -   -  

- 110: 110V, 220: 220V
- Blank: Without Float S/W
- F: Attach Float S/W
- 5: Resin Tank
- Option: Steel Tank
- Blank: Pump Part

### Feature

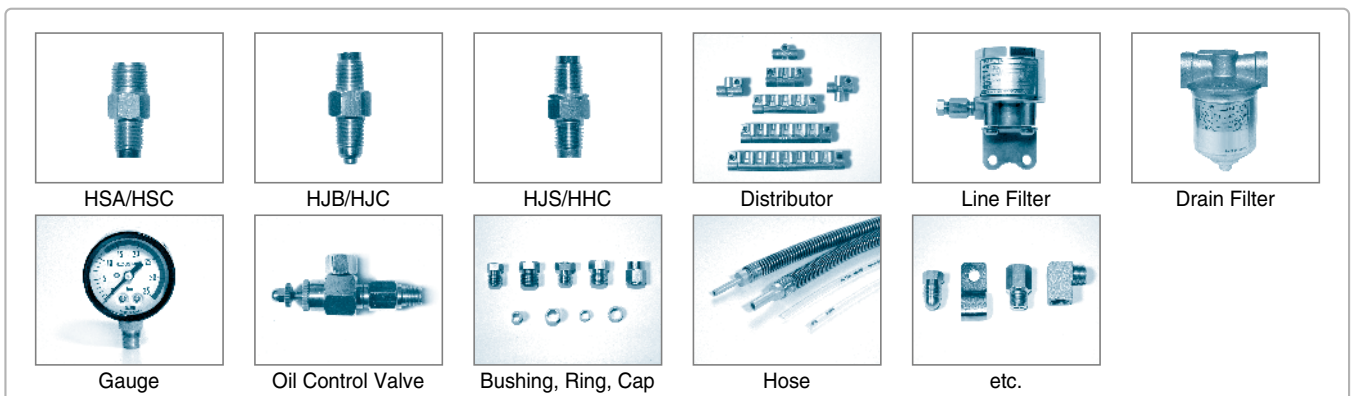
1. 대용량의 비례급유 시스템에 적용할 수 있다.
2. 윤활 급유 장치 뿐만 아니라 소량의 윤활유 회수 장치에도 적합하다.
3. 외부 제어용 펌프로 사용자 환경에 맞추어 다양한 적용이 가능하다.
4. 유면 저하 감지 기능이 내장되어 있다.
5. HJB series 및 HJC series (연속급유용)으로 광범위하게 적용된다.

1. It can be applied to large capacity proportional oil supply systems.
2. It is suitable for lubricating oil supply devices, as well as for a small number of lubricating oil recovery devices.
3. An externally controlled pump, and is capable of various applications according to the users' operational environments.
4. It is equipped with an ullage decrease detector.
5. Applied applied broadly from HJB series to HJC series.(Continuous type)

### Pump Spec.

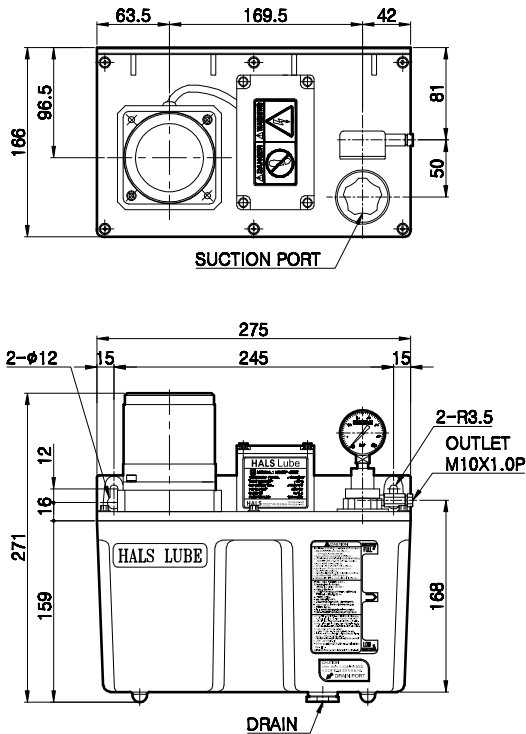
PUMP SPEC.		
MODEL NAME	HMGP-205C	
PUMP TYPE	GEAR PUMP	
DISCHARGE PRESSURE	5~10kg/cm <sup>2</sup>	
PRESSURE GAUGE	0~35kg/cm <sup>2</sup>	
USING OIL	32~220(cSt)	
FILTER	80 Mesh	
TANK CAPACITY	5Liter	
DISCHARGE AMOUNT	100cc/min	
INTERVAL TIME	CONSTANT	
FLOAT S/W	Contact type A contact (NO) ON at Low level	
OIL SUPPLY CONTROL DEVICE	External control	
OIL WARNING	Output at Contact point	
MOTOR SPEC.		
OUTPUT	25W	
PHASE	1 ∅	
VOLTAGE	110V                      220V	
CURRENT	0.46A                      0.21A	
FREQUENCY	50/60Hz	
PACKING SPEC.		
PACKING SIZE(cm)	35(W) x 18(L) x 30(D)	
WEIGHT(kg)	PUMP	7
	PACKING	8

### Components

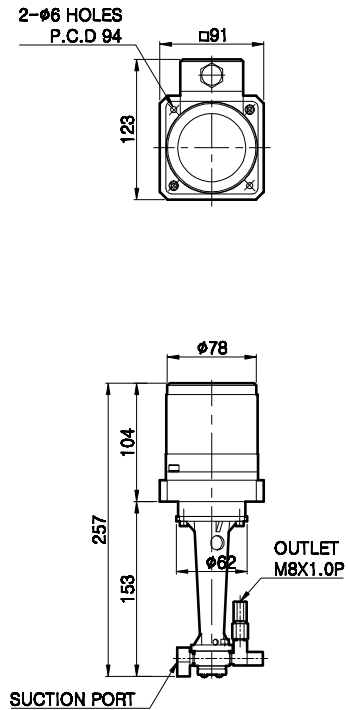


External Figure

TANK UNIT



PUMP

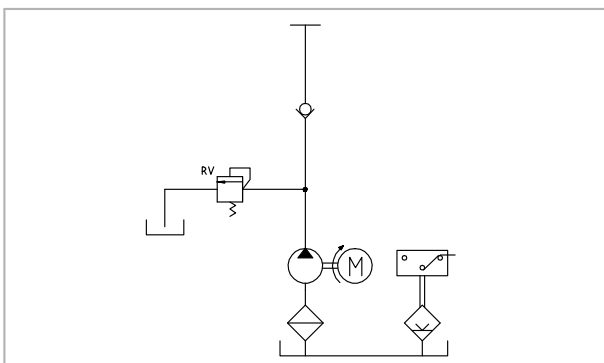


Operating Guide

- 1) 별도의 제어장치가 없고 전원을 연결하고 전기를 공급 하면 펌프가 작동한다.
- 2) 펌프는 사용 환경에 맞추어 휴지시간과 구동시간을 반복적으로 작동 시키면 된다.
- 3) 본제품은 연속구동형 비례밸브와 함께 사용할 수 있는 펌프이지만, 연속 구동형 제품은 아니므로 최대 5분이상 구동 설정을 하면 Motor가 소손 될 수 있다.
- 4) Pump는 공장 출고시 8kg/cm<sup>2</sup>으로 설정되나, 사용유 점도 변화(사용유 점도, 주위온도)에 따라 차이가 있을 수 있다.
- 5) HMGP-205S와 마찬가지로 Pump부만 별도로 사용할 수 있어 별도 Tank내에 자유로이 부착하여 사용이 가능하다.

- 1) It does not have a separate control device, and the pump operates automatically once power is connected and electricity is supplied.
- 2) The pump has to be operated repeatedly adjust on the pause time and the operation time.
- 3) This pump can be used with continuously operating proportional valve. But, this is not a continuous operation pump, so please refrain from operating for more than 5 minutes.
- 4) The pump is set at 8kg/cm<sup>2</sup> when released from the factory, but this may differ depending on the changes in the viscosities of the oils used (oil viscosity, surrounding temperature).
- 5) The pump is used separately like as HMGP-205S. It can be attached freely inside the tank for use.

Hydraulic circuit drawing



Wiring Diagram

Normal type

