

HMGP 105 N series

Internal & External Control Proportional Oil Supply Pump

내부 및 외부제어용 비례급유 펌프



Model

HMGP - [] - O2 - T [] - [] - [] - []

- Interval Time:
S: 3~30min / L: 30~120min
- 110: 110V, 220: 220V
- Blank: Without Float S/W
F: Attach Float S/W
- 2: Resin Tank
Option: Steel Tank
- 103: Attach Float S/W
105N: Without Float S/W
105M: Attach Buzzer
105C: External Control

Feature

1. 대표적인 비례급유용 펌프로 광범위한 산업기계에 사용이 된다.
2. 소형으로 설치 공간의 제약이 적고, 사용이 간단하여 유지·보수가 용이하다.
3. 유면저하시 점점출력 및 BUZZER 사용 등으로 사용자 환경에 맞추어 선택이 가능하다.
4. 전기종에 Suction Filter가 부착되어 배관에 이물 혼입을 방지하였다.
5. 사용환경에 따라 설정 압력 증가가 가능하다.
6. 내부제어(HMGP-105N, 105M, 103) 방식 및 외부제어(HMGP-105C) 방식이 가능하다.

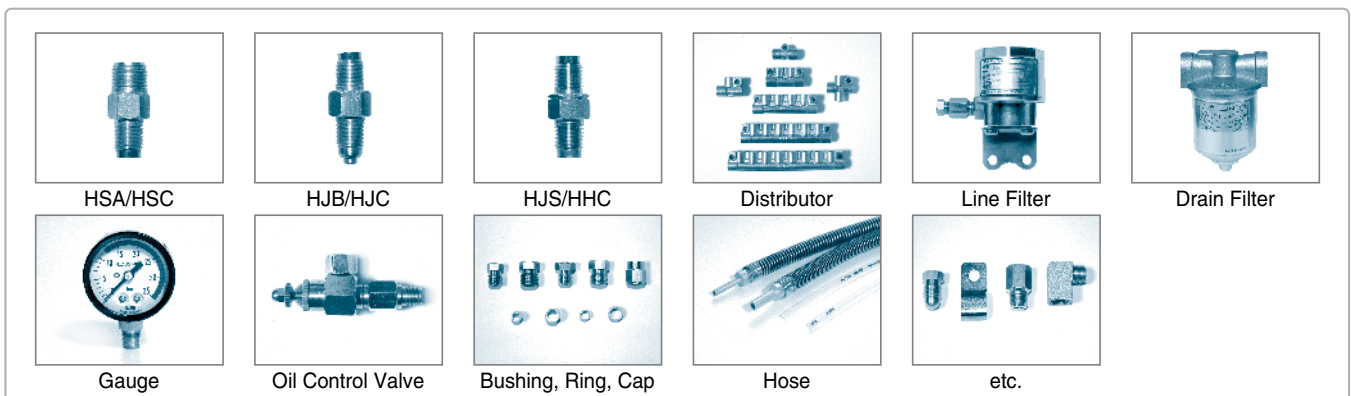
1. It is the most suitable pump for proportional oil supply. It can be applied to a wide range of industrial machines.
2. The compact design reduces installation space limitations, and the simple use means easy installation and repairs.
3. During reduced ullage, selections can be made to suit user environments using contact output and buzzer.
4. Every model is attached with a suction filter to prevent the entry of alien substances in the pipe.
5. Increased pressure settings are available according to operational environments.
6. Internal control type(HMGP-105N, 105M, 103) and External control type(HMGP-105C) can be used.

Pump Spec.

PUMP SPEC.				
MODEL NAME	HMGP-105N	HMGP-105M	HMGP-103	HMGP-105C
PUMP TYPE	GEAR PUMP			
DISCHARGE PRESSURE	8kg/cm ²			
USING OIL	32~220(cSt)			
FILTER	80mesh			
TANK CAPACITY	2Liter			
DISCHARGE AMOUNT	S : 4~45cc/min / L : 4~80cc/min			100cc/min
INTERVAL TIME	S : 3~30min / L : 30~120min			External Control
FLOAT S/W	-		Contact type A contact (NO)	
	-		ON at Low level	
OIL WARNING	Order specification	BUZZER	Optput at Contact point	
MOTOR SPEC.				
INPUT	50W			
PHASE	1Ø			
VOLTAGE	110V	200V	220V	
CURRENT	1.15A/0.95A	0.60A	0.75A/0.5A	
PREQUENCY	50/60Hz			
PACKING SPEC.				
PACKING SIZE	15(W) x 18(L) x 26(D)			
WEIGHT(kg)	PUMP	2.4		
	PACKING	2.5		

※ Motor-3200r.p.m 기준

Components



HSA/HSC

HJB/HJC

HJS/HHC

Distributor

Line Filter

Drain Filter

Gauge

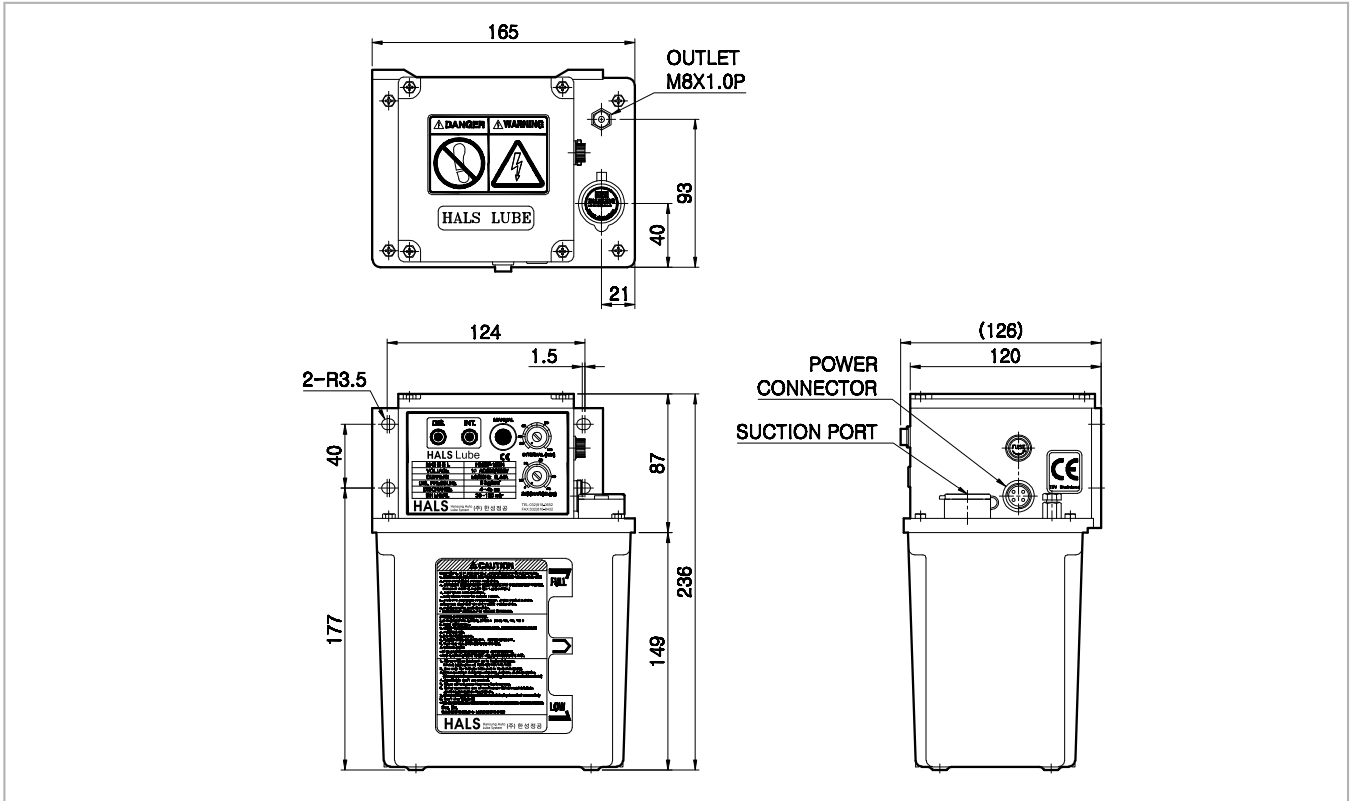
Oil Control Valve

Bushing, Ring, Cap

Hose

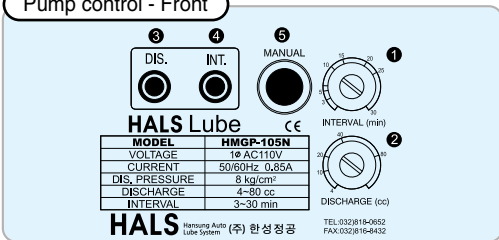
etc.

External Figure



Operating Guide

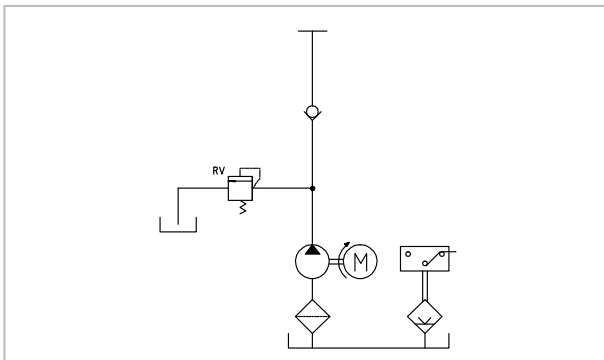
Pump control - Front



- 1) The pump operates once power is connected and electricity is supplied. You can set the pause time using the Interval ① on the front of the pump, and discharge ② to set the operating time (seconds). Afterwards, the pump will repeatedly operate and pause.
- 2) Minimum pause time of the pump is 3 minutes, and the minimum discharge time can be set to 3cc. (The pause time is divided into 3~30 minutes for S type, and 30~120 minutes for the L type.)
- 3) When operating the pump, the DIS. lamp ③ switches on, and during the pause, the INT. lamp ④ switches on.
- 4) The MAN. button ⑤ can be used for test operations and to let air out from the pipes. (But, do not operate more than 5 minutes, as it can cause motor damage.)
- 5) The pump is set at 8kg/cm² when released from the factory, but this may differ depending on the changes in the viscosities of the oils used (oil viscosity, surrounding temperature).

- 1) 전원을 연결하고 전기를 공급하게 되면 펌프가 작동한다. 펌프 전면부 Interval ①으로 휴지시간(분)을 정하고, discharge ②으로 구동시간(초)을 눈금에 맞게 정할 수 있다. 이후 구동과 휴지를 반복하면서 작동한다.
- 2) 펌프의 최소 휴지시간은 3분이고, 최저 토출은 3cc까지 설정이 가능하다. (휴지시간은 S형 3~30분과 L형30~120분으로 구분된다.)
- 3) 펌프 구동시 DIS. 램프 ③이 켜지고, 휴지시에는 INT. 램프 ④가 켜진다.
- 4) 시험구동 및 배관내 에어 빼기용으로 MAN. 버튼 ⑤를 사용할 수 있다. (단, 5분이상 구동 시키지 마십시오. Motor 소손의 원인이 됩니다.)
- 5) Pump는 공장 출고시 8kg/cm²으로 설정되나, 사용유 점도 변화(사용유 점도, 주위온도)에 따라 차이가 있을 수 있다.

Hydraulic circuit drawing



Wiring Diagram

