

HMGP 105 D series

Internal & External Control Proportional Oil Supply Pump

내부 및 외부제어용 비례급유 펌프



Model

HMGP - 105 □ - 02 - T □ - □ - □ - □

- Interval Time:
S: 3~30min / L: 30~120min
- 110: 110V, 220: 220V
- Blank: Without Float S/W
F: Attach Float S/W
- 2: Resin Tank
Option: Steel Tank
- D: Internal Control
DC: External Control
W: External Control
(Attach Pressure S/W)

Feature

- 비례 급유용 펌프로 HMGP-105N과 동일한 형태이지만 Control Box부를 다이캐스팅 AL로 제작하여 외부 충격에도 내구성이 우수하다.
- 펌프 주요부가 일체형으로 제작되어 유지 보수가 용이하다.
- 내부제어(HMGP-105D)방식 및 외부제어(HMGP-105DC, 105W)방식이 가능하다.

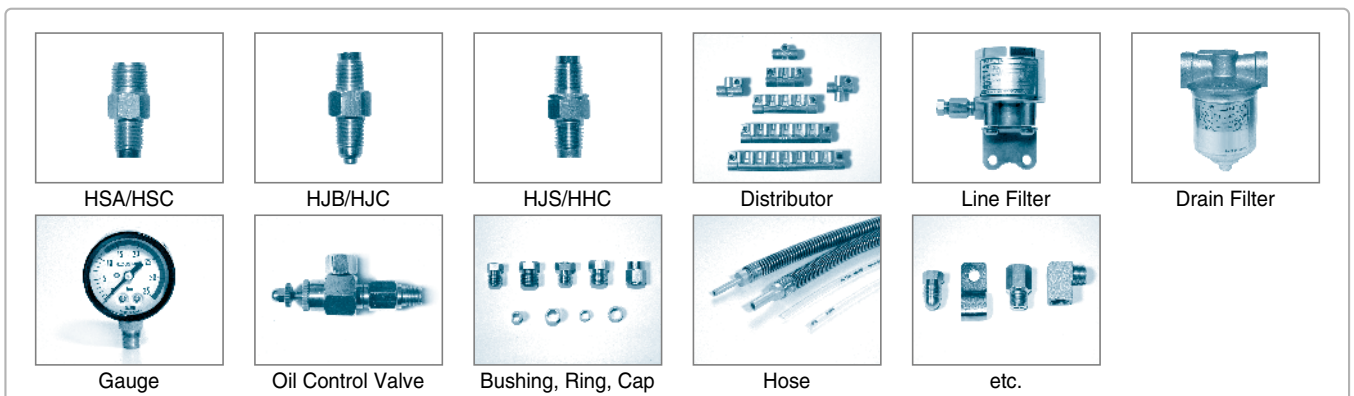
- A product identical in shape to HMGP-105, but with the control box made out of die casting AL to ensure superior durability and resistance against external impacts.
- The main parts of the pump are integrated to ensure easy repairs and maintenance.
- Internal control type(HMGP-105D) and External control type(HMGP-105DC, 105W) can be used.

Pump Spec.

PUMP SPEC.			
MODEL NAME	HMGP-105D	HMGP-105DC	HMGP-105W
PUMP TYPE	GEAR PUMP		
DISCHARGE PRESSURE	8kg/cm ²		
USING OIL	32~220(cSt)		
FILTER	80 Mesh		
TANK CAPACITY	2Liter		
DISCHARGE AMOUNT	4~45 / 4~80cc/min	100cc/min	
INTERVAL TIME	3~30 / 30~120min	External Control	
FLOAT S/W	Contact type A contact (NO) ON at Low level		
PRESSURE S/W	-	-	Contact type A contact (NO)
	-	-	Operation pressure 1.5±0.2 bar ON
MOTOR SPEC.			
INPUT	50W		
PHASE	1 ∅		
VOLTAGE	110V	200V	220V
CURRENT	1.15A/0.95A	0.60A	0.75A/0.50A
FREQUENCY	50/60Hz		
PACKING SPEC.			
PACKING SIZE(cm)	15(W) x 18(L) x 26(D)		
WEIGHT(kg)	PUMP	2.9	
	PACKING	3	

※ Motor-3200r.p.m 기준

Components



HSA/HSC

HJB/HJC

HJS/HHC

Distributor

Line Filter

Drain Filter

Gauge

Oil Control Valve

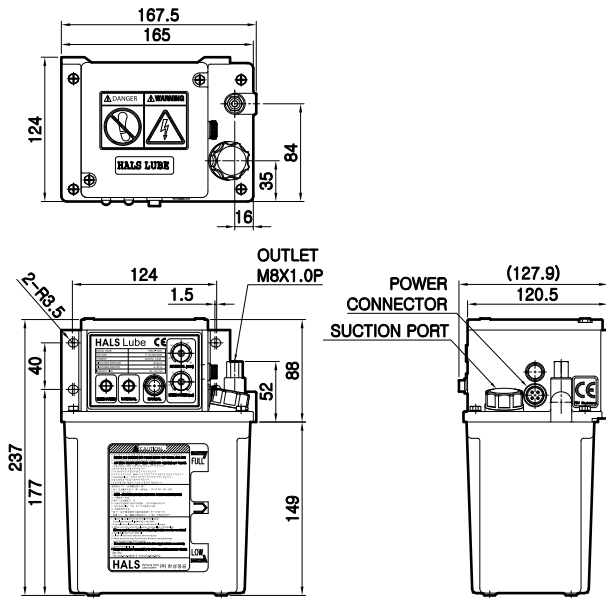
Bushing, Ring, Cap

Hose

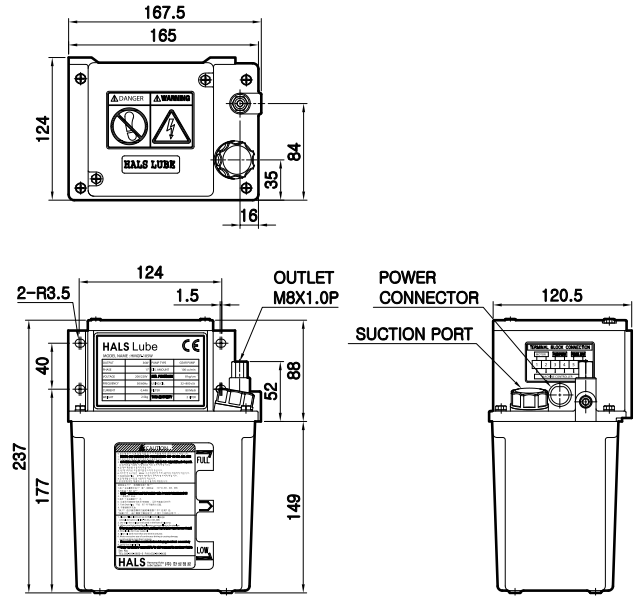
etc.

External Figure

HMGP-105D

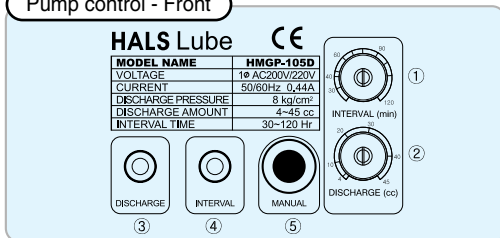


HMGP-105W



Operating Guide

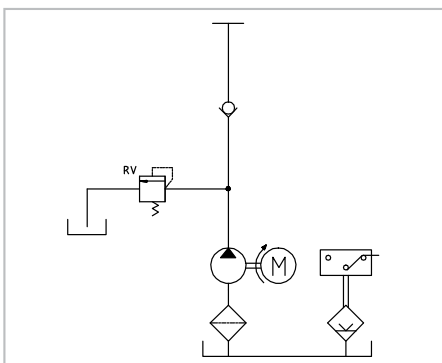
Pump control - Front



- 1) The pump operates once power is connected and electricity is supplied. You can set the pause time using the Interval ① on the front of the pump, and discharge ② to set the operating time (seconds). Afterwards, the pump will repeatedly operate and pause.
- 2) Minimum pause time of the pump is 3 minutes, and the discharge time can be set to 3cc.(HMGP-105D)
- 3) When operating the pump, the DIS, lamp ③ switches on, and during the pause, the INT, lamp④ switches on.
- 4) The MAN, button⑥ can be used for test operations and to let air out from the pipes. (But, do not operate more than 5 minutes, as it can cause motor damage.)
- 5) The pump is set at 8kg/cm² when released from the factory, but this may differ depending on the changes in the viscosities of the oils used (oil viscosity, surrounding temperature).

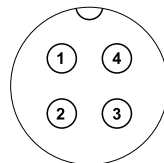
- 1) 전원을 연결하고 전기를 공급하게 되면 펌프가 작동한다. 펌프 전면부 Interval ①으로 휴지 시간(분)을 정하고, Discharge ②으로 구동시간(초)를 눈금에 맞게 정할 수 있다. 이후 구동과 휴지를 반복하면서 작동한다.
- 2) 펌프의 최소 휴지 시간은 3분이고, 최저 토출은 3cc까지 설정이 가능하다.
- 3) 펌프 구동시 DIS. 램프 ③이 켜지고, 휴지시에는 INT. 램프④가 켜진다.
- 4) 시험구동 및 배관내 에어 빼기용으로 MAN, 버튼 ⑥를 사용할 수 있다. (단, 5분이상 구동 시키지 마십시오. Motor 소손의 원인이 됩니다.)
- 5) Pump는 공장 출고시 8kg/cm²으로 설정되나, 사용유 점도 변화(사용유 점도, 주위온도)에 따라 차이가 있을 수 있다.

Hydraulic circuit drawing



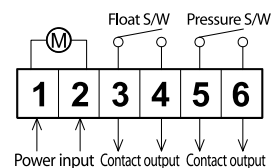
Wiring Diagram

HMGP-105D, 105DC



- ① ④ : POWER (1:BLACK, 4:WHITE)
- ② ③ : OIL ALARM (2:RED, 3:GREEN)

HMGP-105W



- 1 : Power input
- 2 : Contact output
- 3 : Float S/W
- 4 : Pressure S/W
- 5 : Contact output
- 6 : Contact output