

Rotary lobe pump



Product introduce

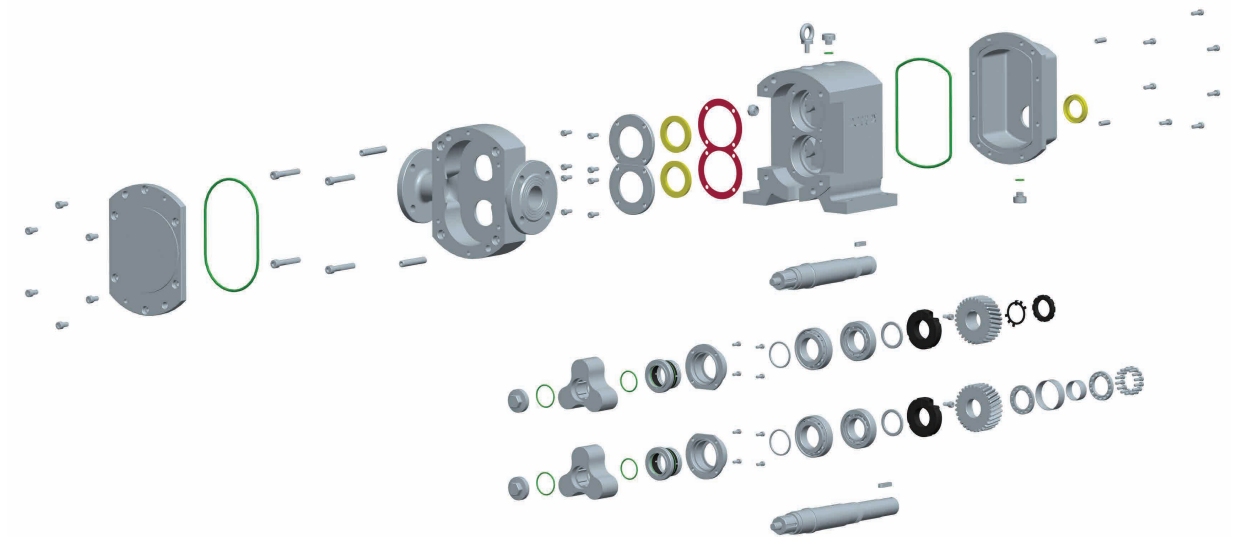
The DURREX rotary lobe pump is a positive displacement pump developed after decades of research and design. The manufacturing technique and accuracy has come up to world advanced level.

The rotary lobe pumps manufacturing standard is divided to: Foodstuffs, Chemicals, Regular, Oil-fields and Special-type. The core parts and sealing device of the products are made of different materials according to different properties of material, to meet variety medium and working procedures' requirements. There are 12 varieties of DURREX rotors, which can be set interchangeably in the same pump.

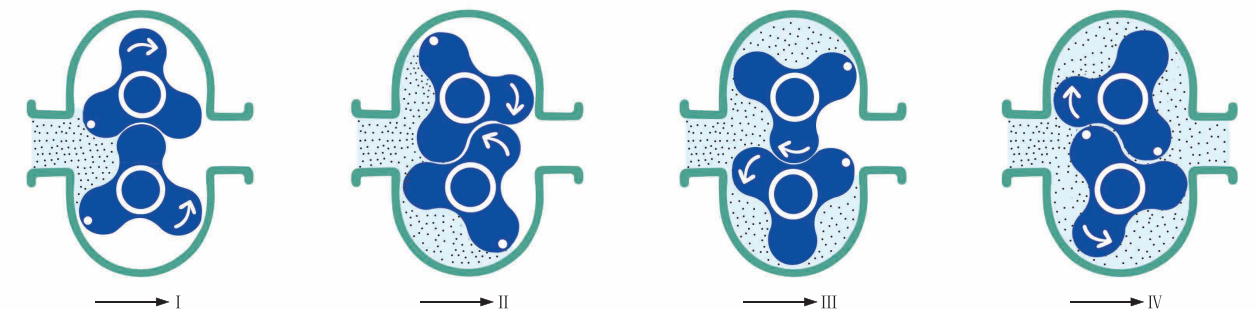
Bare-shaft pump instructure



Breakdown drawing



Operating simulated drawing



Rotor introduce



(1) single impeller: used to transport medium with a little large grains because this impeller is not easy to damage grains. The shortage is high impulse, low pressure, small capacity, so seldom using.



(2) double impeller: used to transport medium with middle or small grains, with low damage rate and low impulse, the capacity is smaller than tri-impeller.



(3) tri-impeller: this is commonly type, the capacity is higher than all other rotors, performance is better than the above rotors, but it has certain breakage to the grain medium.



(4) multi-impeller: when impeller quantity beyond three, the capacity will decrease with impeller increase. Multi-impeller has high stability while using, but easy to damage grain medium.

Sealing introduce

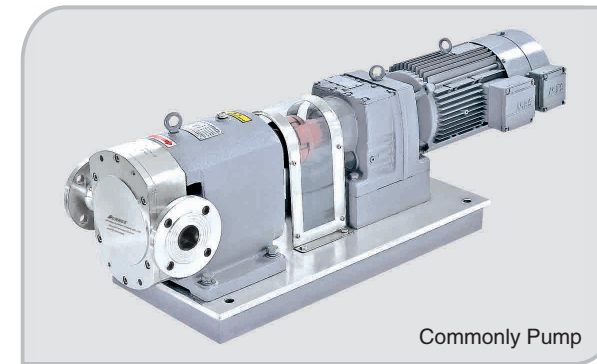


Mechanical Sealing
 Water-flush mechanical sealing
 Oil-lubricating mechanical sealing
 Materials: tungsten carbide, silicon carbide, graphite

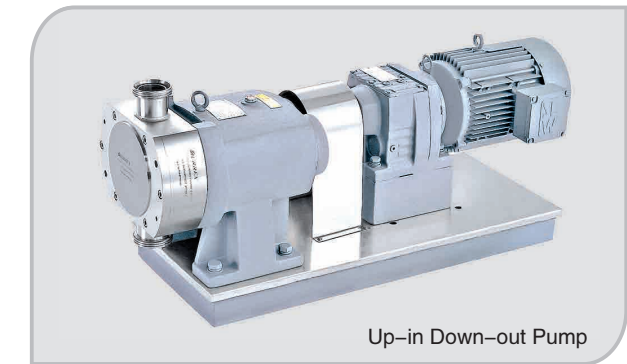


Packing Sealing
 Materials self-lubricating PTFE fiber

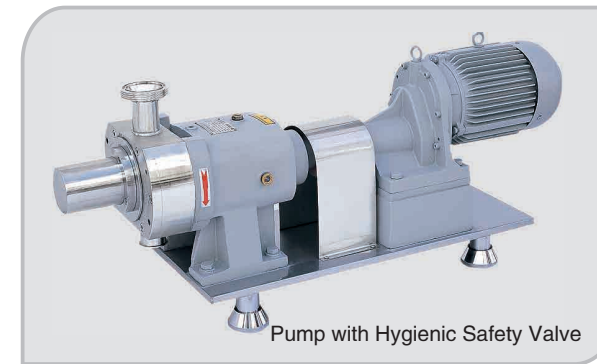
Whole pump reference



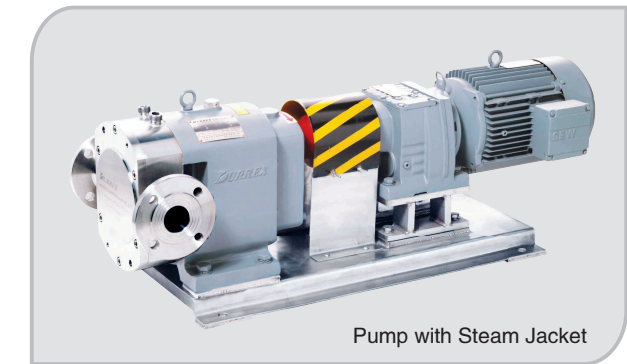
Commonly Pump



Up-in Down-out Pump



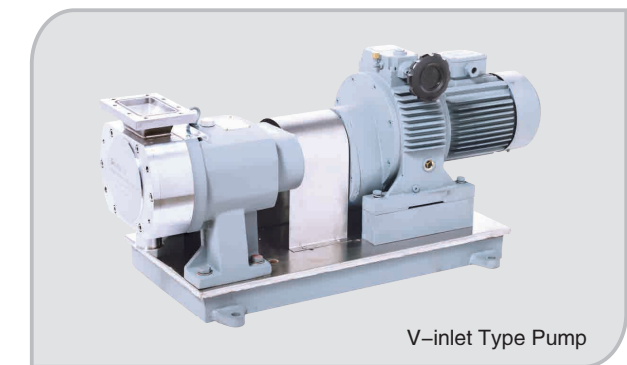
Pump with Hygienic Safety Valve



Pump with Steam Jacket



Pharmaceutical Type Pump



V-inlet Type Pump



Movable Type Pump



Pump with Frequency Converter

Product features

- Ⓜ Gap is kept between the rotors and between the rotors and the pump body, no friction, long life.
- Ⓜ Simple assembling and disassembling, easy to maintenance and clean, less easily-damaged parts.
- Ⓜ High efficiency and energy-saving, low failure, reliable sealing and low noise.
- Ⓜ With special material pump could be used for transporting solid granules, like sludge and sewage.
- Ⓜ Capable to pump the viscous material below 2 million cp and pulp with the solid volume of 60%.
- Ⓜ Equipped with frequency converter, flow can be adjusted at will and can be used as general measurement pump.
- Ⓜ Flange, screw, or clamp connection can be selected by customer.
- Ⓜ Capable of pumping mixtures of gas, fluid, and solid materials.
- Ⓜ Heating & cooling pump is of built-in structure, with well heat conductivity.
- Ⓜ Movable type pumps can be used to pump canned medium, with vacuum of 0.08 Mpa.
- Ⓜ Hygienic safety valves can be set at the pump head if customer required.

Applications

Consumer chemicals:

AES, LAS, AOS, K12, glycerol, sorbitol, fatty alcohol, bathing shampoo, skin cream, shampoo, detergent liquid, toothpaste soap, washing powder slurry, etc.

Refined Chemicals:

Dyestuffs, pigments, all kinds of pulp, chemical additives, adhesives, silicone oil, leather oil, a variety of colloidal materials, etc.

Food and Beverage:

Chocolate, concentrated milk, yoghurt, honey, syrup, cane sugar, tomato juice, concentrated juice, jam, ice cream, milk, yeast slurry, meat slurry, jelly, condiment, lees, soybean protein, flour slurry, etc.

Paper making:

Polyacrylamide, calcium carbonate, starch paste, carboxyl starch paste, rosin, rosin size, paper pulp, filling, dry strength agent, wet strength agent, sizing agent, filtering agent, antifoaming agent, spreading, water treatment chemicals, etc.

Chemical fiber:

Pectic slurry, PVA, vinylon slurry, acrylic slurry, ammonia slurry, polyester slice, terylene, polypropylene fiber, rayon, functional fiber, etc.

Pharmaceuticals:

Ointments, extractum, medicine latex, pill paste, syrup, healthcare products, drugs, etc.

Coating:

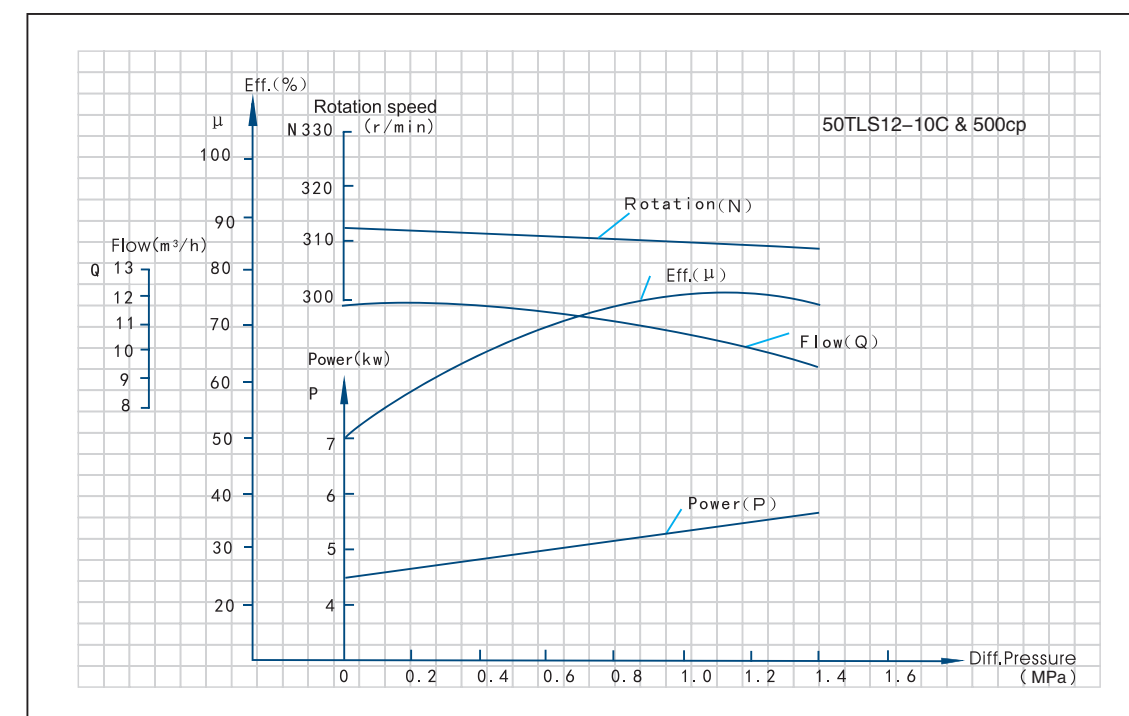
Paint, dope, printing ink, insulating paint, resin, additives and assistants, organic solvent, etc.



Technical parameters

Type	Capacity (L/r)	Rotation speed (r/min)	Flow (m ³ /h)	pressure (MPa)	Power (kw)	Suction pressure (MPa)	Viscosity (cp)	Inlet&outlet DN(mm)
10TLS12-0.1C	0.01	10-720	0.1	0.1-1.2	0.12-1.1	0.08	1-1000000	10
15TLS12-0.5C	0.04	10-720	0.5	0.1-1.2	0.25-1.5	0.08	1-1000000	15
25TLS12-2C	0.15	10-720	2	0.1-1.2	0.25-2.2	0.08	1-1000000	25
40TLS12-5C	0.32	10-500	5	0.1-1.2	0.37-3	0.08	1-1000000	40
50TLS12-10C	0.65	10-500	10	0.1-1.2	1.5-7.5	0.08	1-1000000	50
60TLS12-15C	1.1	10-500	15	0.1-1.2	2.2-11	0.08	1-1000000	65
65TLS12-20C	1.74	10-500	20	0.1-1.2	2.2-15	0.08	1-1000000	65
75TLS12-30C	2.6	10-500	30	0.1-1.2	3-22	0.08	1-1000000	80
80TLS12-40C	3.65	10-500	40	0.1-1.2	4-30	0.08	1-1000000	100
100TLS12-60C	5.2	10-500	60	0.1-1.2	5.5-45	0.08	1-1000000	125
125TLS12-80C	6.8	10-500	80	0.1-1.2	7.5-55	0.08	1-1000000	125
140TLS12-120C	9.8	10-400	120	0.1-1.2	11-90	0.08	1-1000000	150
150TLS12-150C	12.8	10-400	150	0.1-1.2	15-160	0.08	1-1000000	150
200TLS12-200C	16	10-300	200	0.1-1.2	18.5-185	0.08	1-1000000	200

Performance curve



Twin-rotor lobe pumps are multi-functional and bi-directional displacement pumps. They are among the best fluid transmission pumps in the world. They are be used to transmit all varieties of fluids and are ideal choices for pumps. If you want to order our twin-rotor lobe pumps, please fill in this form and fax it to our company. We will help you make the choice and get the best technical performances.

Twin-rotor Lobe Pump • Selection guide

Technical Paramenters

Materials transmitted:

Properties of materials: corrosive toxic sanitary

Material viscosity: cp Material temperature: °C

Flow: required m³/h variation m³/h

Outlet pressure: required Mpa Max Mpa

Inlet pressure: required Mpa Max Mpa

Required differential pressure: Mpa

Vacuum degree: Mpa

Working Condition

Heat preserved or not: Yes No

Sealing requirement: mechanical sealing filler sealing filler sealing

Transmission mode: gear decelerator mechanical stepless speed change

pulley decelerator speed change by frequency transformer

Explosion-proof grade:

Outlet and inlet direction: Inlet direction Outlet direction

Outlet and inlet diameter: Inlet diameter Outlet diameter

Material:

Connection mode: flange screw clamp

Installation: fixed moveable

Operation status: sustained intermittent

Other special requirements:
(Volt/Phase/Frequency)

Durrex Pumps Co.,Ltd

Add: No.118, Qishan Rd, Yinzhou Economic Development Zone, Ningbo, China. P.C: 315145
 Tel: 86-574-87772757 87771111 Fax: 86-574-87761066
 Http: www.durrex-pump.com E-mail:vicky@durrex-pump.com

Emulsifiers & homogeneous pump introduction

Homogeneous emulsion pump and mixing pump are multi-purpose compound & emulsifier equipmen with international advanced technology, its professional technic and manufacture precision can approach internatonaal similar product. Homogeneous emulsion pump is an efficient type product with mix, dispersion, breaking, dissolution, refinery, homogenization, emulsifying. The main parts are stators and rotors. At the centrifugal and fluid forces created by the rapid turning of the rotors, the stators exercise on the materials strong power shearing, centrifugal pressing, breaking, fluid friction, turbulent homogenizing and the solid,fluid, and volatile medium are quickly refined, homo-genized, disaggregated, and emulsified.The repeat of this process can result in stable and high-quality products.

These serial products can greatly simplify the traditional production processes upgrade the production efficiency and product quality.They are widely used in petrochemical, refinery chemistry, consumer chemicals, biology pharmaceuticals, foods processing, papermaking, environmental protection, paint and so on.

Applications

- ⊕ **Refined chemistry:**
Pigment, dyestuff, plastic auxiliaries, textile auxiliaries, adhesives, resin emulsion, hot melt adhesive,sealing compound, glue, pulp, finishing agent, surface active agent, carbon black disperse, adhesive-proof agent,mold release agent, defoaming agent, fluorine cleaning agent, polishing agent, leather auxiliaries, pigment paste, wax emulsion, bactericide, coagulant,etc.
- ⊕ **Petrochemistry:**
Lubricant, heavy oil emulsion, diesel oil emulsion, modified asphalt, catalyzer, wax emulsion,etc.
- ⊕ **Biology & pharmaceuticals:**
Injection, antibiotic, medical emulsion, medical paste, health product, mini-capsule emulsion, cell breaker, etc.
- ⊕ **Paint & ink:**
Printing ink, paint, emulsion paint, building coating, nanometer coating, photocurable coating, coating auxiliaries, carbon black disperse, print ink, glaze, bentonite,etc.
- ⊕ **Farmchemicals:**
Pesticide, herbicide, medicinal butter, fertilizer, pesticide adjuvant,etc.
- ⊕ **Nanometer materials:**
Disperse and disaggregation for nanometer medium,etc.
- ⊕ **Foodstuffindustry:**
Juice, jam, ice-cream, milk product, food addictive, tea drink, chocolate, bean milk, essence, milk, etc.
- ⊕ **Consumerchemistry:**
Fluid detergent, skim cream, lip paste, face foam, silicone oil emulsion, household essence, skin care, cosmetic, etc.
- ⊕ **Paper making:**
Pulp, filling, dry strength agent, wet strength agent, sizing agent, filtering agent, antifoaming agent spreading, water treatment chemicals, and so on.