

BALL BEARING UNITS

SET SCREW TYPE PILLOW BLOCKS CAST HOUSING

UCP2	Shaft Diameter 12 – 90mm	B286
	1/2 – 3 1/2 inch	

SET SCREW TYPE FLANGED UNITS CAST HOUSING

UCF2	Shaft Diameter 12 – 90mm	B292
	1/2 – 3 1/2 inch	
UCFL2	Shaft Diameter 12 – 90mm	B298
	1/2 – 3 1/2 inch	



1. CONSTRUCTION

The NSK bearing unit is a combination of a radial ball bearing, seal, and a housing of high-grade cast iron or pressed steel, which comes in various shapes.

The outer surface of the bearing and the internal surface of the housing are spherical, so that the unit is self-aligning.

The inside construction of the ball bearing for the unit is such that steel balls and retainers of the same type as in series 62 and 63 of the deep groove ball bearing are used. A duplex seal consisting of a combination of an oil-proof synthetic rubber seal and

a slinger is provided on both sides.

Depending on the type, the following methods of fitting to the shaft are employed:

- (1) The inner ring is fastened onto the shaft in two places by set screws.
- (2) The inner ring has a tapered bore and is fitted to the shaft by means of an adapter.
- (3) In the eccentric locking collar system the inner ring is fastened to the shaft by means of eccentrics grooves provided at the side of the inner ring and on the collar.

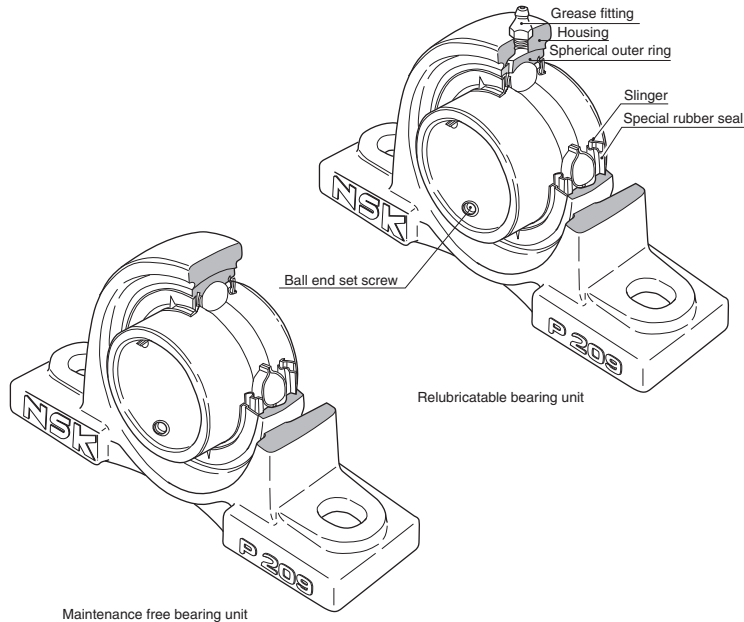


Fig.1.1

2. DESIGN FEATURES AND ADVANTAGES

2.1 MAINTENANCE FREE TYPE

The NSK Maintenance free bearing unit contains a high-grade lithium-based grease, good for use over a long period, which is ideally suited to sealed-type bearing. Also provided is an excellent sealing device, which prevents any leakage of grease or penetration of dust and water from outside.

It is designed so that the rotation of the shaft causes the sealed-in grease to circulate through the inside space, effectively providing maximum lubrication. The lubrication effect is maintained over a long period with no need for replenishment of grease.

To summarize the advantages of the NSK maintenance free bearing unit:

- (1) As an adequate amount of good quality grease is sealed in at the time of manufacture, there is no need for replenishment. This means savings in terms of time and maintenance costs.
- (2) Since there is no need for any regreasing facilities, such as piping, a more compact design is possible.
- (3) The sealed-in design eliminates the possibility of grease leakage, which could lead to stained products.

2.2 RELUBRICATABLE TYPE

The NSK relubricatable type bearing unit has an advantage over other similar units being so designed as to permit regreasing even in the case of misalignment of 2° to the right or left. The hole through which the grease fitting is mounted usually causes structural weakening of the housing.

However, as a result of extensive testing, in the NSK bearing unit the hole is positioned so as to minimize this adverse effect. In addition, the regreasing groove has been designed to minimize weakening of the housing.

While the NSK maintenance free type bearing unit is satisfactory for use under normal operating conditions in-doors, in the following circumstances it is necessary to use the relubricatable type bearing unit:

- (1) Cases where the temperature of the bearing rises above 100°C , 212°F :
* -Normal temperature of up to 130°C , 266°F heat-resistant bearing units.
- (2) Cases where there is excessive dust, but space does not permit using a bearing unit with a cover.
- (3) Cases where the bearing unit is constantly exposed to splashes of water or any other liquid, but space does not permit using a bearing unit with a cover.
- (4) Cases in which the humidity is very high, and the machine in which the bearing unit is used is run only intermittently.

- (5) Cases involving a heavy load of which the Cr/Pr value is about 10 or below, and the speed is 10 min^{-1} or below, or the movement is oscillatory.
- (6) Cases where the number of revolutions is relatively high and the noise problem has to be considered; for example, when the bearing is used with the fan of an air conditioner.

2.3 SPECIAL SEALING FEATURE

2.3.1 STANDARD BEARING UNITS

The sealing device of the ball bearing for the NSK bearing unit is a combination of a heat-resistant and oil-proof synthetic rubber seal and a slinger of an exclusive design.

The seal, which is fixed in the outer ring, is steel-reinforced, and its lip, in contact with the inner ring, is designed to minimize frictional torque.

The slinger is fixed to the inner ring of the bearing with which it rotates. There is a small clearance between its periphery and the outer ring.

There are triangular protrusions on the outside face of the slinger and, as the bearing rotates, these protrusions on the slinger create a flow of air outward from the bearing. In this way, the slinger acts as a fan which keeps dust and water away from the bearing.

These two types of seals on both sides of the bearing prevent grease leakage, and foreign matter is prevented from entering the bearing from outside.

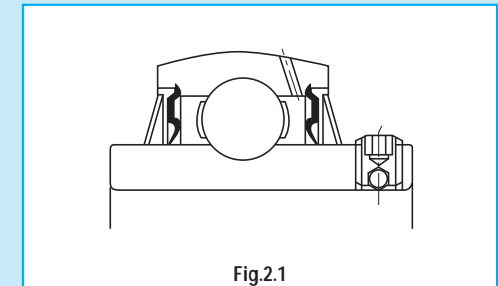


Fig.2.1

2.3.2 BEARING UNITS WITH COVERS

The NSK bearing unit with a cover consists of a standard bearing unit and an outside covering for extra protection against dust. Special consideration has been given to its design with respect to dust-proofing.

Sealing devices are provided in both the bearing and the housing, so that units of this type operate satisfactorily even in such adverse environments as flour mills, steel mills, foundries, galvanizing plants and chemical plants, where excessive dust is produced and/or liquids are used. They are also eminently suitable for outdoor environments where dust and rain are inevitable, and in heavy industrial machinery such as construction and transportation equipment.

The rubber seal of the cover contacts with the shaft by its two lips, as shown in Fig. 2.2 and 2.3. By filling the groove between the two lips with grease, an excellent sealing effect is obtained and, at the same time, the contacting portions of the lips are lubricated. Furthermore, the groove is so designed that when the shaft is inclined the rubber seal can move in the radial direction.

When bearing units are exposed to splashes of water rather than to dust, a drain hole (5 to 8 mm, 0.2 to 0.3 inches in diameter) is provided at the bottom of the cover, and grease should be applied to the side of the bearing itself instead of into the cover.

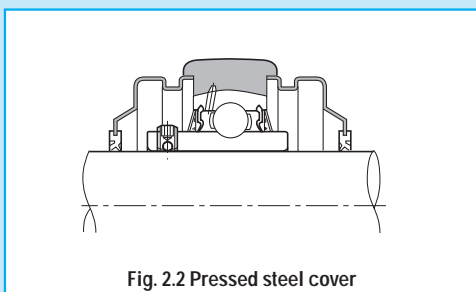


Fig. 2.2 Pressed steel cover

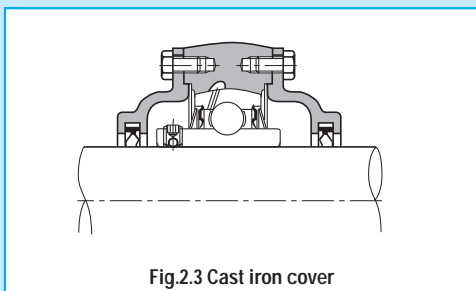


Fig. 2.3 Cast iron cover

2.4 SECURE FITTING

Fastening the bearing to the shaft is effected by tightening the ball-end set screw, situated on the inner ring. This is a unique feature which prevents loosening, even if the bearing is subject to intense vibrations and shocks.

2.5 SELF-ALIGNING

With the NSK bearing unit, the outer surface of the ball bearing and the inner surface of the housing are spherical, thus this bearing unit has self-aligning characteristic. Any misalignment of axis that arise from poor workmanship on the shaft or errors in fitting will be properly adjusted.

2.6 HIGHER RATED LOAD CAPACITY

The bearing used in the unit is of the same internal construction as those in bearing series 62 and 63, and is capable of accommodating axial load as well as radial load, or composite load. The rated load capacity of this bearing is considerably higher than that of the corresponding self-aligning ball bearings used for standard plummer blocks

2.7 LIGHT WEIGHT YET STRONG HOUSING

Housings for NSK bearing units come in various shapes. They consist of either high-grade cast iron, one-piece casting, or of precision finished pressed steel, the latter being lighter in weight. In either case, they are practically designed to combine lightness with maximum strength.

2.8 EASY MOUNTING

The NSK bearing unit is an integrated unit consisting of a bearing and a housing.

As the bearing is prelubricated at manufacture with the correct amount of high-grade lithium base, it can be mounted on the shaft just as it is. It is sufficient to carry out a short test run after mounting.

2.9 ACCURATE FITTING OF THE HOUSING

In order to simplify the fitting of the pillow block and flange type bearing units, the housings are provided with a seat for a dowel pin, which may be utilized as needed.

2.10 BEARING REPLACEABILITY

The bearing used in the NSK bearing unit is replaceable. In the event of bearing failure, a new bearing can be fitted to the existing housing.

3. RECOMMENDED TORQUES FOR TIGHTENING SET SCREWS

Table 3.1 Recommended torques for tightening set screws

A) Metric series, applied to metric bore size.

Designation of the bearings of applicable units			Designation of set screws	Tightening torques N·m (max.)
UC201 to UC205	—	—	M 5x0.8 × 7	3.9
UC206	—	UC305 to UC306	M 6x0.75× 8	4.9
UC207	UCX05	—	M 6x0.75× 8	5.8
UC208 to UC210	—	—	M 8x1 ×10	7.8
UC211	UCX06 to UCX08	UC307	M 8x1 ×10	9.8
UC212	UCX09	—	M10x1.25x12	16.6
UC213 to UC215	—	UC308 to UC309	M10x1.25x12	19.6
UC216	UCX10	—	M10x1.25x12	22.5
—	UCX11 to UCX12	—	M10x1.25x12	24.5
UC217 to UC218	UCX13 to UCX15	UC310 to UC314	M12x1.5 ×13	29.4
—	UCX16 to UCX17	—	M12x1.5 ×13	34.3
—	UCX18	UC315 to UC316	M14x1.5 ×15	34.3
—	UCX20	UC317 to UC319	M16x1.5 ×18	53.9
—	—	UC320 to UC324	M18x1.5 ×20	58.8
—	—	UC326 to UC328	M20x1.5 ×25	78.4

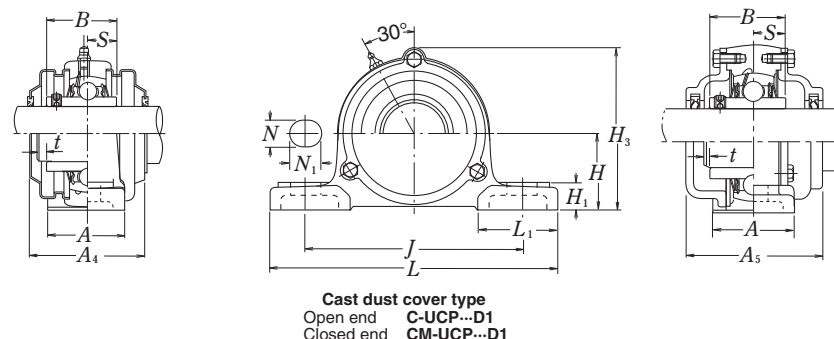
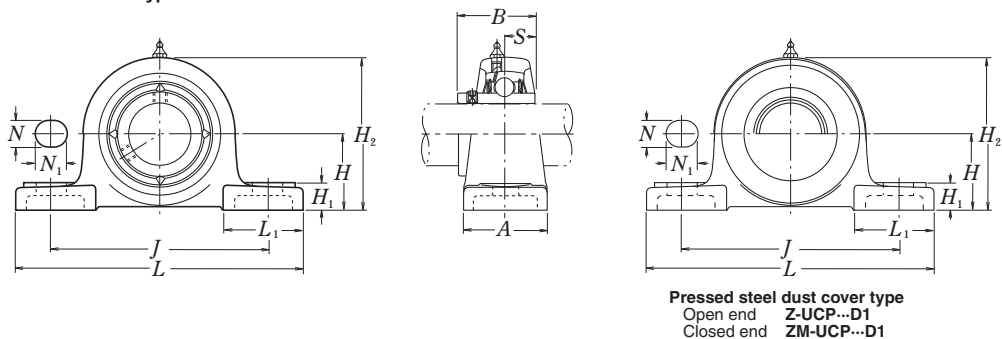
Designation of the bearings of applicable units	Designation of set screws	Tightening torques N·m (max.)
AS201 to 205	M5x0.8 × 7	3.4
AS206	M6x0.75× 8	4.4
AS207	M6x0.75× 8	4.9
AS208	M8x1 ×10	6.8

B) Inch series, applied to inch bore size.

Designation of the bearings for the unit to which torques given are applicable			Designation of set screws	Tightening torques lbf·inch (max.)
UC201 to UC205	—	—	No.10 -32UNF	34
UC206	—	UC305 to UC306	1/4 -28UNF	43
UC207	UCX05	—	1/4 -28UNF	52
UC208 to UC210	—	—	5/16 -24UNF	69
UC211	UCX06 to UCX08	UC307	5/16 -24UNF	86
UC212	UCX09	—	3/8 -24UNF	147
UC213 to UC215	—	UC308 to UC309	3/8 -24UNF	173
UC216	UCX10	—	3/8 -24UNF	199
—	UCX11 to UCX12	—	3/8 -24UNF	216
UC217 to UC218	UCX13 to UCX15	UC310 to UC314	1/2 -20UNF	260
—	UCX16 to UCX17	—	1/2 -20UNF	303
—	UCX18	UC315 to UC316	9/16 -18UNF	303
—	UCX20	UC317 to UC318	5/8 -18UNF	477
—	—	UC320	5/8 -18UNF	520

Designation of the bearings for the unit to which torques given are applicable	Designation of set screws	Tightening torques lbf·inch (max.)
AS201 to 205	No 10-32UNF	30
AS206	1/4 -28UNF	39
AS207	1/4 -28UNF	43
AS208	5/16-24UNF	60

Pillow blocks units cast housing
Set screw type

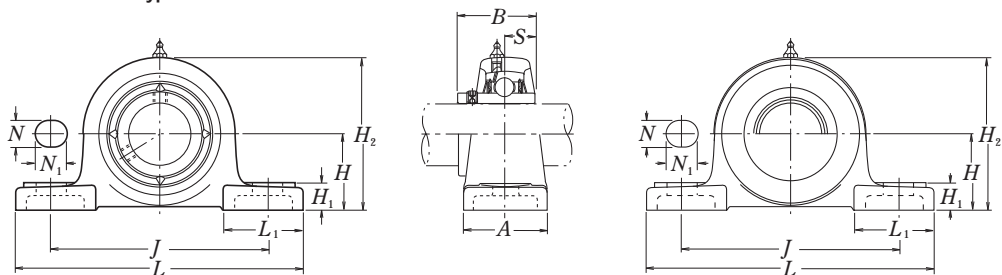


Shaft dia. mm inch	Unit number (1)	Nominal dimensions											Bolt size mm inch	Bearing number
		mm inch												
		H	L	J	A	N	N ₁	H ₁	H ₂	L ₁	B	S		
12 1/2	UCP201D1 UCP201-008D1	30.2 1 3/16	127 5	95 3 3/4	38 1 1/2	13 1/2	16 5/8	14 9/16	62 2 7/16	42 1 21/32	31 1.2205	12.7 0.500	M10 3/8	UC201D1 UC201-008D1
15 9/16 5/8	UCP202D1 UCP202-009D1 UCP202-010D1	30.2 1 3/16	127 5	95 3 3/4	38 1 1/2	13 1/2	16 5/8	14 9/16	62 2 7/16	42 1 21/32	31 1.2205	12.7 0.500	M10 3/8	UC202D1 UC202-009D1 UC202-010D1
17 11/16	UCP203D1 UCP203-011D1	30.2 1 3/16	127 5	95 3 3/4	38 1 1/2	13 1/2	16 5/8	14 9/16	62 2 7/16	42 1 21/32	31 1.2205	12.7 0.500	M10 3/8	UC203D1 UC203-011D1
20 3/4	UCP204D1 UCP204-012D1	33.3 1 5/16	127 5	95 3 3/4	38 1 1/2	13 1/2	16 5/8	14 9/16	65 2 9/16	42 1 21/32	31 1.2205	12.7 0.500	M10 3/8	UC204D1 UC204-012D1
25 13/16 7/8 15/16	UCP205D1 UCP205-013D1 UCP205-014D1 UCP205-015D1 UCP205-100D1	36.5 1 7/16	140 5 1/2	105 4 1/8	38 1 1/2	13 1/2	16 5/8	15 19/32	71 2 25/32	42 1 21/32	34.1 1.3425	14.3 0.563	M10 3/8	UC205D1 UC205-013D1 UC205-014D1 UC205-015D1 UC205-100D1
30 1 1/16 1 1/8 1 3/16 1 1/4	UCP206D1 UCP206-101D1 UCP206-102D1 UCP206-103D1 UCP206-104D1	42.9 1 11/16	165 6 1/2	121 4 3/4	48 1 7/8	17 21/32	20 25/32	17 21/32	83 3 9/32	54 2 1/8	38.1 1.5000	15.9 0.626	M14 1/2	UC206D1 UC206-101D1 UC206-102D1 UC206-103D1 UC206-104D1
35 1 1/4 1 5/16 1 3/8 1 7/16	UCP207D1 UCP207-104D1 UCP207-105D1 UCP207-106D1 UCP207-107D1	47.6 1 7/8	167 6 9/16	127 5	48 1 7/8	17 21/32	20 25/32	18 23/32	93 3 21/32	54 2 1/8	42.9 1.6890	17.5 0.689	M14 1/2	UC207D1 UC207-104D1 UC207-105D1 UC207-106D1 UC207-107D1
40 1 1/2 1 9/16	UCP208D1 UCP208-108D1 UCP208-109D1	49.2 1 15/16	184 7 1/4	137 5 13/32	54 2 1/8	17 21/32	20 25/32	18 23/32	98 3 27/32	52 2 1/16	49.2 1.9370	19 0.748	M14 1/2	UC208D1 UC208-108D1 UC208-109D1

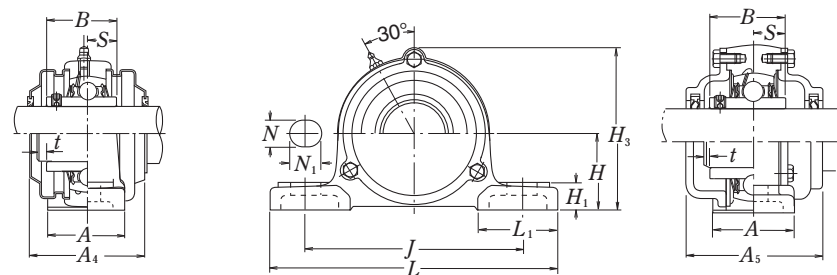
Note (1) These numbers indicate relubricatable type. If maintenance free type is needed, please order without suffix "D1".

Housing number	Unit number (1) pressed steel dust cover type	Unit number (1) cast dust cover type	Nominal dimensions				Mass of unit		
			t max.	A ₄ mm inch	H ₃ mm inch	A ₅	UCP	Z(ZM)	C(CM)
P203D1	Z(ZM)-UCP201D1	C(CM)-UCP201D1	2	45	67	62	0.7	0.7	1.0
P203D1	Z(ZM)-UCP201-008D1	C(CM)-UCP201-008D1	5/64	1 25/32	2 5/8	2 7/16	1.5	1.5	2.2
P203D1	Z(ZM)-UCP202D1	C(CM)-UCP202D1	2	45	67	62	0.7	0.7	1.0
P203D1	Z(ZM)-UCP202-009D1	C(CM)-UCP202-009D1	5/64	1 25/32	2 5/8	2 7/16	1.5	1.5	2.2
P203D1	Z(ZM)-UCP202-010D1	C(CM)-UCP202-010D1							
P203D1	Z(ZM)-UCP203D1	C(CM)-UCP203D1	2	45	67	62	0.7	0.7	1.0
P203D1	Z(ZM)-UCP203-011D1	C(CM)-UCP203-011D1	5/64	1 25/32	2 5/8	2 7/16	1.5	1.5	2.2
P204D1	Z(ZM)-UCP204D1	C(CM)-UCP204D1	2	45	70	62	0.7	0.7	0.9
P204D1	Z(ZM)-UCP204-012D1	C(CM)-UCP204-012D1	5/64	1 25/32	2 3/4	2 7/16	1.5	1.5	2.0
P205D1	Z(ZM)-UCP205D1	C(CM)-UCP205D1	2	48	76	70	0.8	0.9	1.1
P205D1	Z(ZM)-UCP205-013D1	C(CM)-UCP205-013D1							
P205D1	Z(ZM)-UCP205-014D1	C(CM)-UCP205-014D1	5/64	1 29/32	3	2 3/4	1.8	2.0	2.4
P205D1	Z(ZM)-UCP205-015D1	C(CM)-UCP205-015D1							
P205D1	Z(ZM)-UCP205-100D1	C(CM)-UCP205-100D1							
P206D1	Z(ZM)-UCP206D1	C(CM)-UCP206D1	2	53	88	75	1.4	1.4	1.7
P206D1	Z(ZM)-UCP206-101D1	C(CM)-UCP206-101D1							
P206D1	Z(ZM)-UCP206-102D1	C(CM)-UCP206-102D1	5/64	2 3/32	3 15/32	2 15/16	3.1	3.1	3.7
P206D1	Z(ZM)-UCP206-103D1	C(CM)-UCP206-103D1							
P206D1	—	—							
P207D1	Z(ZM)-UCP207D1	C(CM)-UCP207D1	3	60	99	80	1.6	1.7	2.0
P207D1	Z(ZM)-UCP207-104D1	C(CM)-UCP207-104D1							
P207D1	Z(ZM)-UCP207-105D1	C(CM)-UCP207-105D1	1/8	2 3/8	3 29/32	3 5/32	3.5	3.7	4.4
P207D1	Z(ZM)-UCP207-106D1	C(CM)-UCP207-106D1							
P207D1	—	—							
P208D1	Z(ZM)-UCP208D1	C(CM)-UCP208D1	3	69	105	90	1.9	2.1	2.7
P208D1	Z(ZM)-UCP208-108D1	C(CM)-UCP208-108D1	1/8	2 23/32	4 1/8	3 17/32	4.2	4.6	6.0
P208D1	Z(ZM)-UCP208-109D1	C(CM)-UCP208-109D1							

Pillow blocks units cast housing
Set screw type



Pressed steel dust cover type
Open end Z-UCP...D1
Closed end ZM-UCP...D1



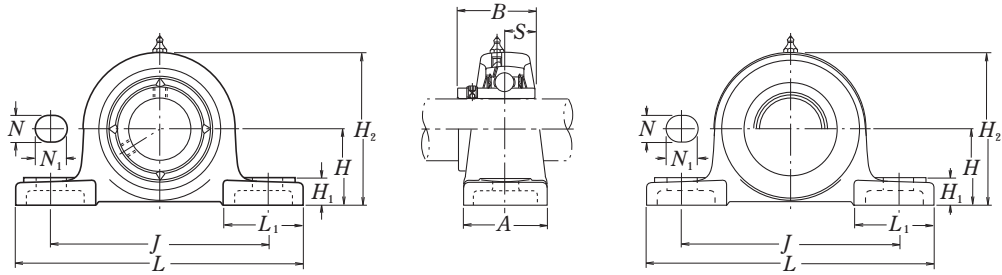
Cast dust cover type
Open end C-UCP...D1
Closed end CM-UCP...D1

Shaft dia. mm inch	Unit number ⁽¹⁾	Nominal dimensions											Bolt size mm inch	Bearing number
		H	L	J	A	N	N ₁	H ₁	H ₂	L ₁	B	S		
45 1 5/8	UCP209D1	54	190	146	54	17	20	20	106	60	49.2	19	M14	UC209D1
111/16	UCP209-110D1	2 1/8	7 15/32	5 3/4	2 1/8	2 1/32	2 5/32	2 5/32	4 3/16	2 3/8	1.9370	0.748	1/2	UC209-110D1
13/4	UCP209-111D1													UC209-111D1
	UCP209-112D1													UC209-112D1
50 1 13/16	UCP210D1	57.2	206	159	60	20	23	21	114	65	51.6	19	M16	UC210D1
17/8	UCP210-113D1													UC210-113D1
115/16	UCP210-114D1	2 1/4	8 1/8	6 1/4	2 3/8	2 5/32	2 9/32	1 3/16	4 1/2	2 9/16	2.0315	0.748	5/8	UC210-114D1
2	UCP210-115D1													UC210-115D1
	UCP210-200D1													UC210-200D1
55 2	UCP211D1	63.5	219	171	60	20	23	23	126	65	55.6	22.2	M16	UC211D1
2 1/16	UCP211-200D1													UC211-200D1
2 1/8	UCP211-201D1	2 1/2	8 5/8	6 23/32	2 3/8	2 5/32	2 9/32	2 9/32	4 31/32	2 9/16	2.1890	0.874	5/8	UC211-201D1
2 3/16	UCP211-202D1													UC211-202D1
	UCP211-203D1													UC211-203D1
60 2 1/4	UCP212D1	69.8	241	184	70	20	23	25	138	70	65.1	25.4	M16	UC212D1
2 5/16	UCP212-204D1													UC212-204D1
2 3/8	UCP212-205D1	2 3/4	9 1/2	7 1/4	2 3/4	2 5/32	2 9/32	3 1/32	5 7/16	2 3/4	2.5630	1.000	5/8	UC212-205D1
2 7/16	UCP212-206D1													UC212-206D1
	UCP212-207D1													UC212-207D1
65 2 1/2	UCP213D1	76.2	265	203	70	25	28	27	151	77	65.1	25.4	M20	UC213D1
2 9/16	UCP213-208D1	3	10 7/16	8	2 3/4	3 1/32	1 3/32	1 1/16	5 15/16	3 1/32	2.5630	1.000	3/4	UC213-208D1
	UCP213-209D1													UC213-209D1
70 2 5/8	UCP214D1	79.4	266	210	72	25	28	27	157	77	74.6	30.2	M20	UC214D1
2 11/16	UCP214-210D1													UC214-210D1
2 13/16	UCP214-211D1	3 1/8	10 15/32	8 9/32	2 27/32	3 1/32	1 3/32	1 1/16	6 3/16	3 1/32	2.9370	1.189	3/4	UC214-211D1
	UCP214-212D1													UC214-212D1

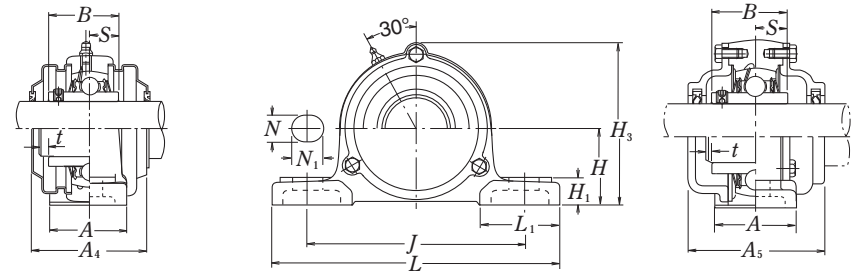
Note ⁽¹⁾ These numbers indicate relubricatable type. If maintenance free type is needed, please order without suffix "D1".

Housing number	Unit number ⁽¹⁾ pressed steel dust cover type	Unit number ⁽¹⁾ cast dust cover type	Nominal dimensions				Mass of unit		
			t max.	mm A ₄	inch H ₃	A ₅	kg UCP	lb Z(ZM)	C(CM)
P209D1	Z(ZM)-UCP209D1	C(CM)-UCP209D1	3	69	113	95	2.2	2.4	3.1
P209D1	Z(ZM)-UCP209-110D1	C(CM)-UCP209-110D1							
P209D1	Z(ZM)-UCP209-111D1	C(CM)-UCP209-111D1	1/8	223/32	47/16	33/4	4.9	5.3	6.8
P209D1	Z(ZM)-UCP209-112D1	C(CM)-UCP209-112D1							
P210D1	Z(ZM)-UCP210D1	C(CM)-UCP210D1	3	76	119	100	2.7	2.8	3.6
P210D1	Z(ZM)-UCP210-113D1	C(CM)-UCP210-113D1							
P210D1	Z(ZM)-UCP210-114D1	C(CM)-UCP210-114D1	1/8	3	4 11/16	3 15/16	6.0	6.2	7.9
P210D1	Z(ZM)-UCP210-115D1	C(CM)-UCP210-115D1							
P210D1	—	C(CM)-UCP210-200D1							
P211D1	Z(ZM)-UCP211D1	C(CM)-UCP211D1	4	77	130	100	3.5	3.5	4.4
P211D1	Z(ZM)-UCP211-200D1	C(CM)-UCP211-200D1							
P211D1	Z(ZM)-UCP211-201D1	C(CM)-UCP211-201D1	5/32	3 1/32	5 1/8	3 15/16	7.7	7.7	9.7
P211D1	Z(ZM)-UCP211-202D1	C(CM)-UCP211-202D1							
P211D1	Z(ZM)-UCP211-203D1	C(CM)-UCP211-203D1							
P212D1	Z(ZM)-UCP212D1	C(CM)-UCP212D1	4	89	143	115	4.7	5.0	6.0
P212D1	Z(ZM)-UCP212-204D1	C(CM)-UCP212-204D1							
P212D1	Z(ZM)-UCP212-205D1	C(CM)-UCP212-205D1	5/32	3 1/2	5 5/8	4 17/32	10	11	13
P212D1	Z(ZM)-UCP212-206D1	C(CM)-UCP212-206D1							
P212D1	—	C(CM)-UCP212-207D1							
P213D1	Z(ZM)-UCP213D1	C(CM)-UCP213D1	4	91	155	120	5.6	5.8	7.2
P213D1	Z(ZM)-UCP213-208D1	C(CM)-UCP213-208D1	5/32	3 19/32	6 3/32	4 23/32	12	13	16
P213D1	Z(ZM)-UCP213-209D1	C(CM)-UCP213-209D1							
P214D1	—	C(CM)-UCP214D1	4	—	162	135	6.5	—	8.3
P214D1	—	C(CM)-UCP214-210D1							
P214D1	—	C(CM)-UCP214-211D1	5/32	—	6 3/8	5 5/16	14	—	18
P214D1	—	C(CM)-UCP214-212D1							

Pillow blocks units cast housing
Set screw type



Pressed steel dust cover type
Open end Z-UCP...D1
Closed end ZM-UCP...D1



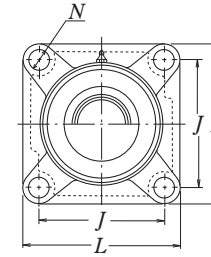
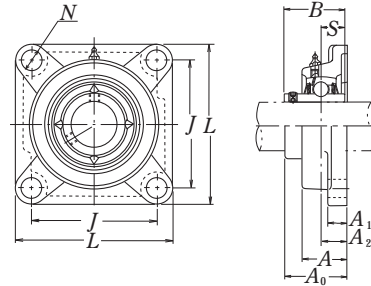
Cast dust cover type
Open end C-UCP...D1
Closed end CM-UCP...D1

Shaft dia. mm inch	Unit number ⁽¹⁾	Nominal dimensions											Bolt size mm inch	Bearing number
		H	L	J	A	N	N ₁	H ₁	H ₂	L ₁	B	S		
75	UCP215D1	82.6	275	217	74	25	28	28	163	80	77.8	33.3	M20	UC215D1
2 ¹³ / ₁₆	UCP215-213D1													UC215-213D1
27/8	UCP215-214D1	31/4	10 ¹³ / ₁₆	8 ¹⁷ / ₃₂	229/32	31/32	13/32	13/32	6 ¹³ / ₃₂	35/32	3.0630	1.311	3/4	UC215-214D1
2 ¹⁵ / ₁₆	UCP215-215D1													UC215-215D1
3	UCP215-300D1													UC215-300D1
80	UCP216D1	88.9	292	232	78	25	28	30	175	85	82.6	33.3	M20	UC216D1
31/16	UCP216-301D1													UC216-301D1
31/8	UCP216-302D1	31/2	111/2	91/8	3 ¹ / ₁₆	31/32	13/32	13/16	6 ⁷ / ₈	3 ¹¹ / ₃₂	3.2520	1.311	3/4	UC216-302D1
33/16	UCP216-303D1													UC216-303D1
85	UCP217D1	95.2	310	247	83	25	28	32	187	85	85.7	34.1	M20	UC217D1
31/4	UCP217-304D1													UC217-304D1
35/16	UCP217-305D1	33/4	12 ⁷ / ₃₂	9 ²³ / ₃₂	3 ⁹ / ₃₂	31/32	13/32	11/4	7 ³ / ₈	3 ¹¹ / ₃₂	3.3740	1.343	3/4	UC217-305D1
37/16	UCP217-307D1													UC217-307D1
90	UCP218D1	101.6	327	262	88	27	30	33	200	90	96	39.7	M22	UC218D1
31/2	UCP218-308D1	4	12 ⁷ / ₈	10 ⁵ / ₁₆	3 ¹⁵ / ₃₂	11/16	13/16	15/16	7 ⁷ / ₈	3 ¹⁷ / ₃₂	3.7795	1.563	7/8	UC218-308D1

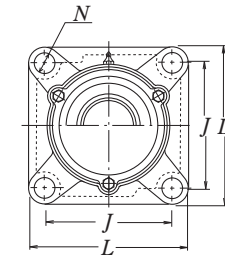
Note (1) These numbers indicate relubricatable type. If maintenance free type is needed, please order without suffix "D1".

Housing number	Unit number (1) pressed steel dust cover type	Unit number (1) cast dust cover type	Nominal dimensions				Mass of unit		
			t max.	mm A ₄	inch H ₃	A ₅	UCP	Z(ZM)	C(CM)
P215D1	—	C(CM)-UCP215D1	4	—	168	135	7.2	—	9.3
P215D1	—	C(CM)-UCP215-213D1							
P215D1	—	C(CM)-UCP215-214D1	5/32	—	65/8	55/16	16	—	21
P215D1	—	C(CM)-UCP215-215D1							
P215D1	—	C(CM)-UCP215-300D1							
P216D1	—	C(CM)-UCP216D1	4	—	181	145	8.7	—	11
P216D1	—	C(CM)-UCP216-301D1							
P216D1	—	C(CM)-UCP216-302D1	5/32	—	71/8	5 ²³ / ₃₂	19	—	24
P216D1	—	C(CM)-UCP216-303D1							
P217D1	—	C(CM)-UCP217D1	5	—	191	155	11	—	13
P217D1	—	C(CM)-UCP217-304D1							
P217D1	—	C(CM)-UCP217-305D1	13/64	—	7 ¹⁷ / ₃₂	6 ³ / ₃₂	24	—	29
P217D1	—	C(CM)-UCP217-307D1							
P218D1	—	C(CM)-UCP218D1	5	—	204	165	13	—	16
P218D1	—	C(CM)-UCP218-308D1	13/64	—	8 ¹ / ₃₂	6 ¹ / ₂	29	—	35

Square flanged units cast housing
Set screw type



Pressed steel dust cover type
Open end Z-UCF...D1
Closed end ZM-UCF...D1



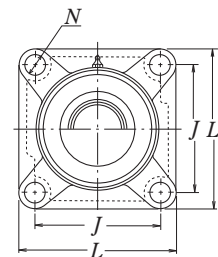
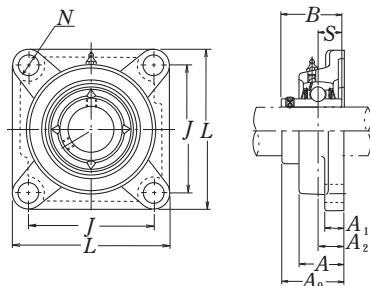
Cast dust cover type
Open end C-UCF...D1
Closed end CM-UCF...D1

Shaft dia.	Unit number ⁽¹⁾	Nominal dimensions										Bolt size	Bearing number
		mm inch											
		L	J	A ₂	A ₁	A	N	A ₀	B	S			
12	UCF201D1	86	64	15	11	25.5	12	33.3	31	12.7	M10	UC201D1	
1/2	UCF201-008D1	3 ³ / ₈	2 ³³ / ₆₄	19/32	7/16	1	15/32	1 ⁵ / ₁₆	1.2205	0.500	3/8	UC201-008D1	
15	UCF202D1	86	64	15	11	25.5	12	33.3	31	12.7	M10	UC202D1	
9/16	UCF202-009D1	3 ³ / ₈	2 ³³ / ₆₄	19/32	7/16	1	15/32	1 ⁵ / ₁₆	1.2205	0.500	3/8	UC202-009D1	
5/8	UCF202-010D1	3 ³ / ₈	2 ³³ / ₆₄	19/32	7/16	1	15/32	1 ⁵ / ₁₆	1.2205	0.500	3/8	UC202-010D1	
17	UCF203D1	86	64	15	11	25.5	12	33.3	31	12.7	M10	UC203D1	
11/16	UCF203-011D1	3 ³ / ₈	2 ³³ / ₆₄	19/32	7/16	1	15/32	1 ⁵ / ₁₆	1.2205	0.500	3/8	UC203-011D1	
20	UCF204D1	86	64	15	11	25.5	12	33.3	31	12.7	M10	UC204D1	
3/4	UCF204-012D1	3 ³ / ₈	2 ³³ / ₆₄	19/32	7/16	1	15/32	1 ⁵ / ₁₆	1.2205	0.500	3/8	UC204-012D1	
25	UCF205D1	95	70	16	13	27	12	35.8	34.1	14.3	M10	UC205D1	
13/16	UCF205-013D1	3 ³ / ₄	2 ³ / ₄	5/8	1/2	11/16	15/32	1 ¹³ / ₃₂	1.3425	0.563	3/8	UC205-013D1	
7/8	UCF205-014D1	3 ³ / ₄	2 ³ / ₄	5/8	1/2	11/16	15/32	1 ¹³ / ₃₂	1.3425	0.563	3/8	UC205-014D1	
15/16	UCF205-015D1	3 ³ / ₄	2 ³ / ₄	5/8	1/2	11/16	15/32	1 ¹³ / ₃₂	1.3425	0.563	3/8	UC205-015D1	
1	UCF205-100D1	3 ³ / ₄	2 ³ / ₄	5/8	1/2	11/16	15/32	1 ¹³ / ₃₂	1.3425	0.563	3/8	UC205-100D1	
30	UCF206D1	108	83	18	13	31	12	40.2	38.1	15.9	M10	UC206D1	
11/16	UCF206-101D1	4 ¹ / ₄	3 ¹⁷ / ₆₄	45/64	1/2	17/32	15/32	1 ³⁷ / ₆₄	1.5000	0.626	3/8	UC206-101D1	
11/8	UCF206-102D1	4 ¹ / ₄	3 ¹⁷ / ₆₄	45/64	1/2	17/32	15/32	1 ³⁷ / ₆₄	1.5000	0.626	3/8	UC206-102D1	
13/16	UCF206-103D1	4 ¹ / ₄	3 ¹⁷ / ₆₄	45/64	1/2	17/32	15/32	1 ³⁷ / ₆₄	1.5000	0.626	3/8	UC206-103D1	
11/4	UCF206-104D1	4 ¹ / ₄	3 ¹⁷ / ₆₄	45/64	1/2	17/32	15/32	1 ³⁷ / ₆₄	1.5000	0.626	3/8	UC206-104D1	
35	UCF207D1	117	92	19	15	34	14	44.4	42.9	17.5	M12	UC207D1	
11/4	UCF207-104D1	4 ¹⁹ / ₃₂	3 ⁵ / ₈	3/4	19/32	1 ¹¹ / ₃₂	35/64	13/4	1.6890	0.689	7/16	UC207-104D1	
15/16	UCF207-105D1	4 ¹⁹ / ₃₂	3 ⁵ / ₈	3/4	19/32	1 ¹¹ / ₃₂	35/64	13/4	1.6890	0.689	7/16	UC207-105D1	
13/8	UCF207-106D1	4 ¹⁹ / ₃₂	3 ⁵ / ₈	3/4	19/32	1 ¹¹ / ₃₂	35/64	13/4	1.6890	0.689	7/16	UC207-106D1	
17/16	UCF207-107D1	4 ¹⁹ / ₃₂	3 ⁵ / ₈	3/4	19/32	1 ¹¹ / ₃₂	35/64	13/4	1.6890	0.689	7/16	UC207-107D1	
40	UCF208D1	130	102	21	15	36	16	51.2	49.2	19	M14	UC208D1	
11/2	UCF208-108D1	5 ¹ / ₈	4 ¹ / ₆₄	53/64	19/32	1 ¹³ / ₃₂	5/8	2 ¹ / ₆₄	1.9370	0.748	1/2	UC208-108D1	
19/16	UCF208-109D1	5 ¹ / ₈	4 ¹ / ₆₄	53/64	19/32	1 ¹³ / ₃₂	5/8	2 ¹ / ₆₄	1.9370	0.748	1/2	UC208-109D1	

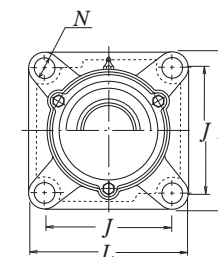
Note (1) These numbers indicate relubricatable type. If maintenance free type is needed, please order without suffix "D1".

Housing number	Unit number (1) pressed steel dust cover type	Unit number (1) cast dust cover type	Nominal dimensions			Mass of unit		
			mm inch			kg lb		
			t max.	A ₄	A ₅	UCP	Z(ZM)	C(CM)
F204D1	Z(ZM)-UCF201D1	C(CM)-UCF201D1	2	38	46	0.6	0.6	0.8
F204D1	Z(ZM)-UCF201-008D1	C(CM)-UCF201-008D1	5/64	1 ¹ / ₂	1 ¹³ / ₁₆	1.3	1.3	1.8
F204D1	Z(ZM)-UCF202D1	C(CM)-UCF202D1	2	38	46	0.6	0.6	0.8
F204D1	Z(ZM)-UCF202-009D1	C(CM)-UCF202-009D1	2	38	46	0.6	0.6	0.8
F204D1	Z(ZM)-UCF202-010D1	C(CM)-UCF202-010D1	5/64	1 ¹ / ₂	1 ¹³ / ₁₆	1.3	1.3	1.8
F204D1	Z(ZM)-UCF203D1	C(CM)-UCF203D1	2	38	46	0.6	0.6	0.8
F204D1	Z(ZM)-UCF203-011D1	C(CM)-UCF203-011D1	5/64	1 ¹ / ₂	1 ¹³ / ₁₆	1.3	1.3	1.8
F204D1	Z(ZM)-UCF204D1	C(CM)-UCF204D1	2	38	46	0.6	0.6	0.7
F204D1	Z(ZM)-UCF204-012D1	C(CM)-UCF204-012D1	5/64	1 ¹ / ₂	1 ¹³ / ₁₆	1.3	1.3	1.5
F205D1	Z(ZM)-UCF205D1	C(CM)-UCF205D1	2	40	51	0.8	0.8	0.9
F205D1	Z(ZM)-UCF205-013D1	C(CM)-UCF205-013D1	2	40	51	0.8	0.8	0.9
F205D1	Z(ZM)-UCF205-014D1	C(CM)-UCF205-014D1	2	40	51	0.8	0.8	0.9
F205D1	Z(ZM)-UCF205-015D1	C(CM)-UCF205-015D1	5/64	1 ¹⁹ / ₃₂	2	1.8	1.8	2.0
F205D1	Z(ZM)-UCF205-100D1	C(CM)-UCF205-100D1	5/64	1 ¹⁹ / ₃₂	2	1.8	1.8	2.0
F206D1	Z(ZM)-UCF206D1	C(CM)-UCF206D1	2	45	56	1.1	1.1	1.3
F206D1	Z(ZM)-UCF206-101D1	C(CM)-UCF206-101D1	2	45	56	1.1	1.1	1.3
F206D1	Z(ZM)-UCF206-102D1	C(CM)-UCF206-102D1	2	45	56	1.1	1.1	1.3
F206D1	Z(ZM)-UCF206-103D1	C(CM)-UCF206-103D1	5/64	1 ³ / ₄	2 ⁷ / ₃₂	2.4	2.4	2.9
F206D1	Z(ZM)-UCF206-104D1	C(CM)-UCF206-104D1	5/64	1 ³ / ₄	2 ⁷ / ₃₂	2.4	2.4	2.9
F207D1	Z(ZM)-UCF207D1	C(CM)-UCF207D1	3	49	59	1.5	1.5	1.8
F207D1	Z(ZM)-UCF207-104D1	C(CM)-UCF207-104D1	3	49	59	1.5	1.5	1.8
F207D1	Z(ZM)-UCF207-105D1	C(CM)-UCF207-105D1	3	49	59	1.5	1.5	1.8
F207D1	Z(ZM)-UCF207-106D1	C(CM)-UCF207-106D1	1/8	1 ¹⁵ / ₁₆	2 ⁵ / ₁₆	3.3	3.3	4.0
F207D1	Z(ZM)-UCF207-107D1	C(CM)-UCF207-107D1	1/8	1 ¹⁵ / ₁₆	2 ⁵ / ₁₆	3.3	3.3	4.0
F208D1	Z(ZM)-UCF208D1	C(CM)-UCF208D1	3	56	66	1.7	1.8	2.2
F208D1	Z(ZM)-UCF208-108D1	C(CM)-UCF208-108D1	1/8	2 ³ / ₁₆	2 ¹⁹ / ₃₂	3.7	4.0	4.9
F208D1	Z(ZM)-UCF208-109D1	C(CM)-UCF208-109D1	1/8	2 ³ / ₁₆	2 ¹⁹ / ₃₂	3.7	4.0	4.9

Square flanged units cast housing
Set screw type



Pressed steel dust cover type
Open end Z-UCF...D1
Closed end ZM-UCF...D1



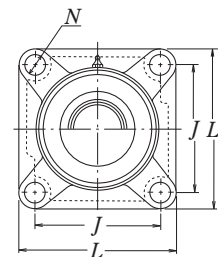
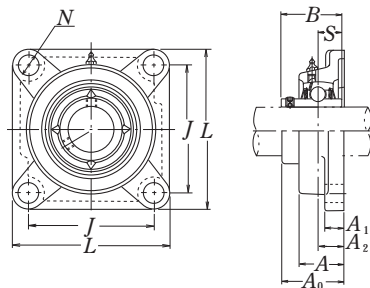
Cast dust cover type
Open end C-UCF...D1
Closed end CM-UCF...D1

Shaft dia.	Unit number ⁽¹⁾	Nominal dimensions									Bolt size	Bearing number
		mm inch										
		L	J	A ₂	A ₁	A	N	A ₀	B	S		
45 15/8	UCF209D1	137	105	22	16	38	16	52.2	49.2	19	M14	UC209D1
111/16	UCF209-110D1	513/32	49/64	55/64	5/8	1 1/2	5/8	21/16	1.9370	0.748	1/2	UC209-110D1
13/4	UCF209-111D1											UC209-111D1
	UCF209-112D1											UC209-112D1
50 1 13/16	UCF210D1	143	111	22	16	40	16	54.6	51.6	19	M14	UC210D1
17/8	UCF210-113D1											UC210-113D1
115/16	UCF210-114D1	55/8	43/8	55/64	5/8	1 9/16	5/8	25/32	2.0315	0.748	1/2	UC210-114D1
2	UCF210-115D1											UC210-115D1
	UCF210-200D1											UC210-200D1
55 2	UCF211D1	162	130	25	18	43	19	58.4	55.6	22.2	M16	UC211D1
21/16	UCF211-200D1											UC211-200D1
21/8	UCF211-201D1	63/8	51/8	63/64	23/32	1 11/16	3/4	2 19/64	2.1890	0.874	5/8	UC211-201D1
23/16	UCF211-202D1											UC211-202D1
	UCF211-203D1											UC211-203D1
60 2 1/4	UCF212D1	175	143	29	18	48	19	68.7	65.1	25.4	M16	UC212D1
25/16	UCF212-204D1											UC212-204D1
23/8	UCF212-205D1	67/8	55/8	1 9/64	23/32	1 7/8	3/4	2 45/64	2.5630	1.000	5/8	UC212-205D1
27/16	UCF212-206D1											UC212-206D1
	UCF212-207D1											UC212-207D1
65 2 1/2	UCF213D1	187	149	30	22	50	19	69.7	65.1	25.4	M16	UC213D1
29/16	UCF213-208D1	73/8	5 55/64	13/16	7/8	1 31/32	3/4	2 3/4	2.5630	1.000	5/8	UC213-208D1
	UCF213-209D1											UC213-209D1
70 2 5/8	UCF214D1	193	152	31	22	54	19	75.4	74.6	30.2	M16	UC214D1
2 11/16	UCF214-210D1											UC214-210D1
23/4	UCF214-211D1	7 19/32	5 63/64	17/32	7/8	2 1/8	3/4	2 31/32	2.9370	1.189	5/8	UC214-211D1
	UCF214-212D1											UC214-212D1

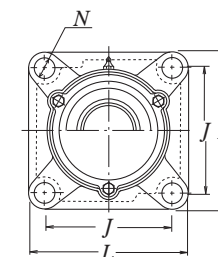
Note (1) These numbers indicate relubricatable type. If maintenance free type is needed, please order without suffix "D1".

Housing number	Unit number (1) pressed steel dust cover type	Unit number (1) cast dust cover type	Nominal dimensions			Mass of unit		
			mm inch			kg lb		
			t max.	A ₄	A ₅	UCF	Z(ZM)	C(CM)
F209D1	Z(ZM)-UCF209D1	C(CM)-UCF209D1	3	57	70	2.1	2.2	2.6
F209D1	Z(ZM)-UCF209-110D1	C(CM)-UCF209-110D1						
F209D1	Z(ZM)-UCF209-111D1	C(CM)-UCF209-111D1	1/8	2 1/4	2 3/4	4.6	4.9	5.7
F209D1	Z(ZM)-UCF209-112D1	C(CM)-UCF209-112D1						
F210D1	Z(ZM)-UCF210D1	C(CM)-UCF210D1	3	60	72	2.5	2.5	3.0
F210D1	Z(ZM)-UCF210-113D1	C(CM)-UCF210-113D1						
F210D1	Z(ZM)-UCF210-114D1	C(CM)-UCF210-114D1	1/8	2 3/8	2 27/32	5.5	5.5	6.6
F210D1	Z(ZM)-UCF210-115D1	C(CM)-UCF210-115D1						
F210D1	—	C(CM)-UCF210-200D1						
F211D1	Z(ZM)-UCF211D1	C(CM)-UCF211D1	4	64	75	3.3	3.4	4.0
F211D1	Z(ZM)-UCF211-200D1	C(CM)-UCF211-200D1						
F211D1	Z(ZM)-UCF211-201D1	C(CM)-UCF211-201D1	5/32	2 1/2	2 15/16	7.3	7.5	8.8
F211D1	Z(ZM)-UCF211-202D1	C(CM)-UCF211-202D1						
F211D1	Z(ZM)-UCF211-203D1	C(CM)-UCF211-203D1						
F212D1	Z(ZM)-UCF212D1	C(CM)-UCF212D1	4	74	86	3.9	4.1	4.8
F212D1	Z(ZM)-UCF212-204D1	C(CM)-UCF212-204D1						
F212D1	Z(ZM)-UCF212-205D1	C(CM)-UCF212-205D1	5/32	2 29/32	3 3/8	8.6	9.0	11
F212D1	Z(ZM)-UCF212-206D1	C(CM)-UCF212-206D1						
F212D1	—	C(CM)-UCF212-207D1						
F213D1	Z(ZM)-UCF213D1	C(CM)-UCF213D1	4	76	90	5.5	5.6	6.4
F213D1	Z(ZM)-UCF213-208D1	C(CM)-UCF213-208D1	5/32	3	3 17/32	12	12	14
F213D1	Z(ZM)-UCF213-209D1	C(CM)-UCF213-209D1						
F214D1	—	C(CM)-UCF214D1	4	—	98	6.3	—	7.4
F214D1	—	C(CM)-UCF214-210D1						
F214D1	—	C(CM)-UCF214-211D1	5/32	—	3 27/32	14	—	16
F214D1	—	C(CM)-UCF214-212D1						

Square flanged units cast housing
Set screw type



Pressed steel dust cover type
Open end Z-UCF...D1
Closed end ZM-UCF...D1



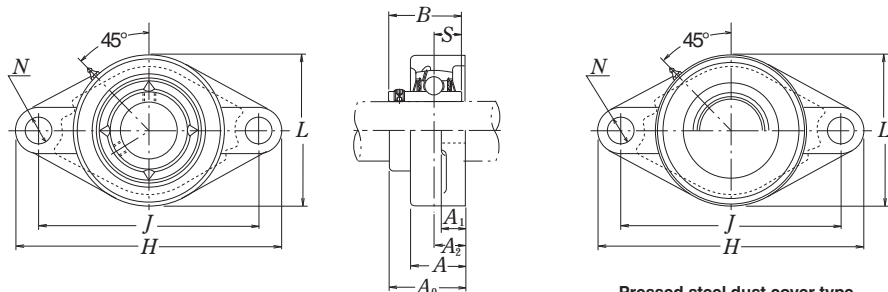
Cast dust cover type
Open end C-UCF...D1
Closed end CM-UCF...D1

Shaft dia.	Unit number ⁽¹⁾	Nominal dimensions									Bolt size	Bearing number
		mm inch										
mm inch		L	J	A ₂	A ₁	A	N	A ₀	B	S	mm inch	
75 2 ¹³ / ₁₆	UCF215D1 UCF215-213D1	200	159	34	22	56	19	78.5	77.8	33.3	M16	UC215D1 UC215-213D1
27/8	UCF215-214D1	77/8	6 ¹⁷ / ₆₄	1 ¹¹ / ₃₂	7/8	2 ⁷ / ₃₂	3/4	3 ³ / ₃₂	3.0630	1.311	5/8	UC215-214D1 UC215-215D1 UC215-300D1
2 ¹⁵ / ₁₆	UCF215-215D1											
3	UCF215-300D1											
80 3 ¹ / ₁₆	UCF216D1 UCF216-301D1	208	165	34	22	58	23	83.3	82.6	33.3	M20	UC216D1 UC216-301D1
3 ¹ / ₈	UCF216-302D1	8 ³ / ₁₆	6 ¹ / ₂	1 ¹¹ / ₃₂	7/8	2 ⁹ / ₃₂	2 ⁹ / ₃₂	3 ⁹ / ₃₂	3.2520	1.311	3/4	UC216-302D1 UC216-303D1
3 ³ / ₁₆	UCF216-303D1											
85 3 ¹ / ₄	UCF217D1 UCF217-304D1	220	175	36	24	63	23	87.6	85.7	34.1	M20	UC217D1 UC217-304D1
3 ⁵ / ₁₆	UCF217-305D1	8 ²¹ / ₃₂	6 ⁵⁷ / ₆₄	1 ²⁷ / ₆₄	1 ⁵ / ₁₆	2 ¹⁵ / ₃₂	2 ⁹ / ₃₂	3 ²⁹ / ₆₄	3.3740	1.343	3/4	UC217-305D1 UC217-307D1
3 ⁷ / ₁₆	UCF217-307D1											
90 3 ¹ / ₂	UCF218D1 UCF218-308D1	235	187	40	24	68	23	96.3	96	39.7	M20	UC218D1 UC218-308D1
		9 ¹ / ₄	7 ²³ / ₆₄	1 ³⁷ / ₆₄	1 ⁵ / ₁₆	2 ¹¹ / ₁₆	2 ⁹ / ₃₂	3 ⁵¹ / ₆₄	3.7795	1.563	3/4	

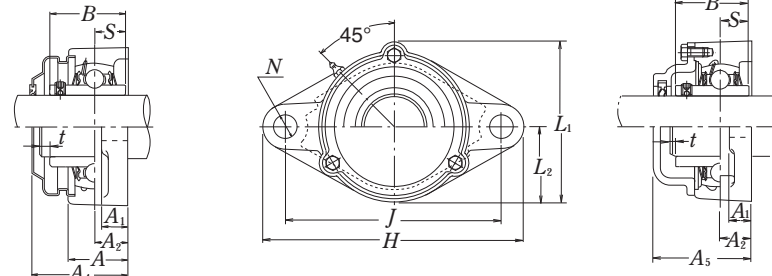
Note (1) These numbers indicate relubricatable type. If maintenance free type is needed, please order without suffix "D1".

Housing number	Unit number (1) pressed steel dust cover type	Unit number (1) cast dust cover type	Nominal dimensions			Mass of unit		
			mm inch			kg lb		
			t max.	A ₄	A ₅	UCF	Z(ZM)	C(CM)
F215D1	—	C(CM)-UCF215D1	4	—	102	6.6	—	7.9
F215D1	—	C(CM)-UCF215-213D1						
F215D1	—	C(CM)-UCF215-214D1	5/32	—	4 ¹ / ₃₂	15	—	17
F215D1	—	C(CM)-UCF215-215D1						
F215D1	—	C(CM)-UCF215-300D1						
F216D1	—	C(CM)-UCF216D1	4	—	106	7.9	—	9.3
F216D1	—	C(CM)-UCF216-301D1						
F216D1	—	C(CM)-UCF216-302D1	5/32	—	4 ³ / ₁₆	17	—	21
F216D1	—	C(CM)-UCF216-303D1						
F217D1	—	C(CM)-UCF217D1	5	—	114	9.8	—	12
F217D1	—	C(CM)-UCF217-304D1						
F217D1	—	C(CM)-UCF217-305D1	1 ³ / ₆₄	—	4 ¹ / ₂	22	—	26
F217D1	—	C(CM)-UCF217-307D1						
F218D1	—	C(CM)-UCF218D1	5	—	122	12	—	13
F218D1	—	C(CM)-UCF218-308D1	1 ³ / ₆₄	—	4 ¹³ / ₁₆	26	—	29

Rhombus flanged units cast housing
Set screw type



Pressed steel dust cover type
Open end Z-UCFL...D1
Closed end ZM-UCFL...D1



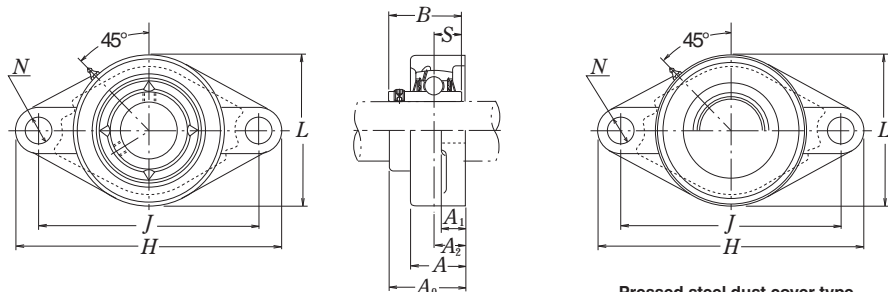
Cast dust cover type
Open end C-UCFL...D1
Closed end CM-UCFL...D1

Shaft dia.	Unit number ⁽¹⁾	Nominal dimensions										Bolt size	Bearing number
		mm inch											
		H	J	A ₂	A ₁	A	N	L	A ₀	B	S		
12 1/2	UCFL201D1 UCFL201-008D1	113 47/16	90 335/64	15 19/32	11 7/16	25.5 1	12 15/32	60 23/8	33.3 15/16	31 1.2205	12.7 0.500	M10 3/8	UC201D1 UC201-008D1
15 9/16 5/8	UCFL202D1 UCFL202-009D1 UCFL202-010D1	113 47/16	90 335/64	15 19/32	11 7/16	25.5 1	12 15/32	60 23/8	33.3 15/16	31 1.2205	12.7 0.500	M10 3/8	UC202D1 UC202-009D1 UC202-010D1
17 11/16	UCFL203D1 UCFL203-011D1	113 47/16	90 335/64	15 19/32	11 7/16	25.5 1	12 15/32	60 23/8	33.3 15/16	31 1.2205	12.7 0.500	M10 3/8	UC203D1 UC203-011D1
20 3/4	UCFL204D1 UCFL204-012D1	113 47/16	90 335/64	15 19/32	11 7/16	25.5 1	12 15/32	60 23/8	33.3 15/16	31 1.2205	12.7 0.500	M10 3/8	UC204D1 UC204-012D1
25 13/16 7/8 15/16	UCFL205D1 UCFL205-013D1 UCFL205-014D1 UCFL205-015D1 UCFL205-100D1	130 51/8	99 357/64	16 5/8	13 1/2	27 11/16	16 5/8	68 211/16	35.8 113/32	34.1 1.3425	14.3 0.563	M14 1/2	UC205D1 UC205-013D1 UC205-014D1 UC205-015D1 UC205-100D1
30 11/16 11/8 13/16 11/4	UCFL206D1 UCFL206-101D1 UCFL206-102D1 UCFL206-103D1 UCFL206-104D1	148 513/16	117 439/64	18 45/64	13 1/2	31 17/32	16 5/8	80 35/32	40.2 137/64	38.1 1.5000	15.9 0.626	M14 1/2	UC206D1 UC206-101D1 UC206-102D1 UC206-103D1 UC206-104D1
35 11/4 15/16 13/8 17/16	UCFL207D1 UCFL207-104D1 UCFL207-105D1 UCFL207-106D1 UCFL207-107D1	161 611/32	130 51/8	19 3/4	15 19/32	34 111/32	16 5/8	90 317/32	44.4 13/4	42.9 1.6890	17.5 0.689	M14 1/2	UC207D1 UC207-104D1 UC207-105D1 UC207-106D1 UC207-107D1
40 11/2 19/16	UCFL208D1 UCFL208-108D1 UCFL208-109D1	175 67/8	144 543/64	21 53/64	15 19/32	36 113/32	16 5/8	100 315/16	51.2 21/64	49.2 1.9370	19 0.748	M14 1/2	UC208D1 UC208-108D1 UC208-109D1

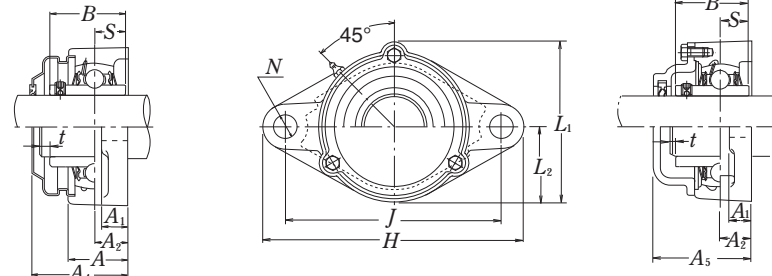
Note (1) These numbers indicate relubricatable type. If maintenance free type is needed, please order without suffix "D1".

Housing number	Unit number (1) pressed steel dust cover type	Unit number (1) cast dust cover type	Nominal dimensions					Mass of unit		
			t max.	mm inch				kg lb		
				A ₄	A ₅	L ₁	L ₂	UCFL	Z(ZM)	C(CM)
FL204D1 FL204D1	Z(ZM)-UCFL201D1 Z(ZM)-UCFL201-008D1	C(CM)-UCFL201D1 C(CM)-UCFL201-008D1	2 5/64	38 11/2	46 113/16	67 25/8	30 13/16	0.5 1.1	0.5 1.1	0.6 1.3
FL204D1 FL204D1 FL204D1	Z(ZM)-UCFL202D1 Z(ZM)-UCFL202-009D1 Z(ZM)-UCFL202-010D1	C(CM)-UCFL202D1 C(CM)-UCFL202-009D1 C(CM)-UCFL202-010D1	2 5/64	38 11/2	46 113/16	67 25/8	30 13/16	0.5 1.1	0.5 1.1	0.6 1.3
FL204D1 FL204D1	Z(ZM)-UCFL203D1 Z(ZM)-UCFL203-011D1	C(CM)-UCFL203D1 C(CM)-UCFL203-011D1	2 5/64	38 11/2	46 113/16	67 25/8	30 13/16	0.5 1.1	0.5 1.1	0.6 1.3
FL204D1 FL204D1	Z(ZM)-UCFL204D1 Z(ZM)-UCFL204-012D1	C(CM)-UCFL204D1 C(CM)-UCFL204-012D1	2 5/64	38 11/2	46 113/16	67 25/8	30 13/16	0.4 0.9	0.4 0.9	0.6 1.3
FL205D1 FL205D1 FL205D1 FL205D1 FL205D1	Z(ZM)-UCFL205D1 Z(ZM)-UCFL205-013D1 Z(ZM)-UCFL205-014D1 Z(ZM)-UCFL205-015D1 Z(ZM)-UCFL205-100D1	C(CM)-UCFL205D1 C(CM)-UCFL205-013D1 C(CM)-UCFL205-014D1 C(CM)-UCFL205-015D1 C(CM)-UCFL205-100D1	2 5/64	40 119/32	51 2	74 229/32	34 111/32	0.6 1.3	0.6 1.3	0.8 1.8
FL206D1 FL206D1 FL206D1 FL206D1 FL206D1	Z(ZM)-UCFL206D1 Z(ZM)-UCFL206-101D1 Z(ZM)-UCFL206-102D1 Z(ZM)-UCFL206-103D1 —	C(CM)-UCFL206D1 C(CM)-UCFL206-101D1 C(CM)-UCFL206-102D1 C(CM)-UCFL206-103D1 —	2 5/64	45 13/4	56 27/32	85 311/32	40 19/16	0.9 2.0	0.9 2.0	1.2 2.6
FL207D1 FL207D1 FL207D1 FL207D1 FL207D1	Z(ZM)-UCFL207D1 Z(ZM)-UCFL207-104D1 Z(ZM)-UCFL207-105D1 Z(ZM)-UCFL207-106D1 —	C(CM)-UCFL207D1 C(CM)-UCFL207-104D1 C(CM)-UCFL207-105D1 C(CM)-UCFL207-106D1 —	3 1/8	49 115/16	59 25/16	97 313/16	45 125/32	1.2 2.6	1.2 2.6	1.4 3.1
FL208D1 FL208D1 FL208D1	Z(ZM)-UCFL208D1 Z(ZM)-UCFL208-108D1 Z(ZM)-UCFL208-109D1	C(CM)-UCFL208D1 C(CM)-UCFL208-108D1 C(CM)-UCFL208-109D1	3 1/8	56 23/16	66 219/32	106 43/16	50 131/32	1.5 3.3	1.5 3.3	1.9 4.2

Rhombus flanged units cast housing
Set screw type



Pressed steel dust cover type
Open end **Z-UCFL...D1**
Closed end **ZM-UCFL...D1**



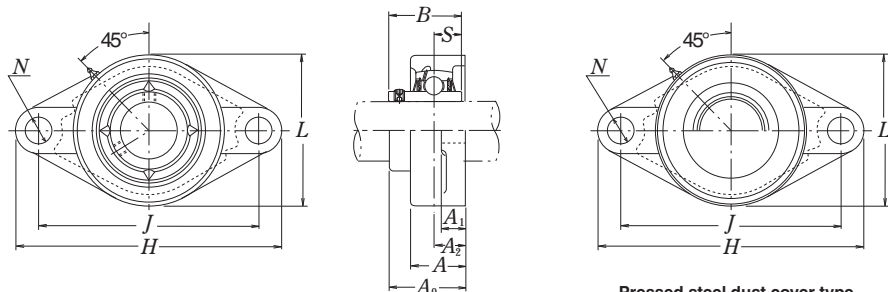
Cast dust cover type
Open end **C-UCFL...D1**
Closed end **CM-UCFL...D1**

Shaft dia.	Unit number ⁽¹⁾	Nominal dimensions											Bolt size	Bearing number
		mm inch												
		H	J	A ₂	A ₁	A	N	L	A ₀	B	S			
45	UCFL209D1	188	148	22	16	38	19	108	52.2	49.2	19	M16	UC209D1	
1 5/8	UCFL209-110D1												UC209-110D1	
1 11/16	UCFL209-111D1	713/32	553/64	55/64	5/8	1 1/2	3/4	4 1/4	2 1/16	1.9370	0.748	5/8	UC209-111D1	
1 3/4	UCFL209-112D1												UC209-112D1	
50	UCFL210D1	197	157	22	16	40	19	115	54.6	51.6	19	M16	UC210D1	
1 13/16	UCFL210-113D1												UC210-113D1	
1 7/8	UCFL210-114D1	7 3/4	6 3/16	55/64	5/8	1 9/16	3/4	4 17/32	2 5/32	2.0315	0.748	5/8	UC210-114D1	
1 15/16	UCFL210-115D1												UC210-115D1	
2	UCFL210-200D1												UC210-200D1	
55	UCFL211D1	224	184	25	18	43	19	130	58.4	55.6	22.2	M16	UC211D1	
2	UCFL211-200D1												UC211-200D1	
2 1/16	UCFL211-201D1	813/16	7 1/4	63/64	23/32	1 11/16	3/4	5 1/8	2 19/64	2.1890	0.874	5/8	UC211-201D1	
2 1/8	UCFL211-202D1												UC211-202D1	
2 3/16	UCFL211-203D1												UC211-203D1	
60	UCFL212D1	250	202	29	18	48	23	140	68.7	65.1	25.4	M20	UC212D1	
2 1/4	UCFL212-204D1												UC212-204D1	
2 5/16	UCFL212-205D1	927/32	7 61/64	1 9/64	23/32	1 7/8	2 9/32	5 1/2	2 45/64	2.5630	1.000	3/4	UC212-205D1	
2 3/8	UCFL212-206D1												UC212-206D1	
2 7/16	UCFL212-207D1												UC212-207D1	
65	UCFL213D1	258	210	30	22	50	23	155	69.7	65.1	25.4	M20	UC213D1	
2 1/2	UCFL213-208D1												UC213-208D1	
2 9/16	UCFL213-209D1	10 5/32	8 17/64	13/16	7/8	1 31/32	2 9/32	6 3/32	2 3/4	2.5630	1.000	3/4	UC213-209D1	
70	UCFL214D1	265	216	31	22	54	23	160	75.4	74.6	30.2	M20	UC214D1	
2 5/8	UCFL214-210D1												UC214-210D1	
2 11/16	UCFL214-211D1	10 7/16	8 1/2	1 7/32	7/8	2 1/8	2 9/32	6 5/16	2 31/32	2.9370	1.189	3/4	UC214-211D1	
2 3/4	UCFL214-212D1												UC214-212D1	

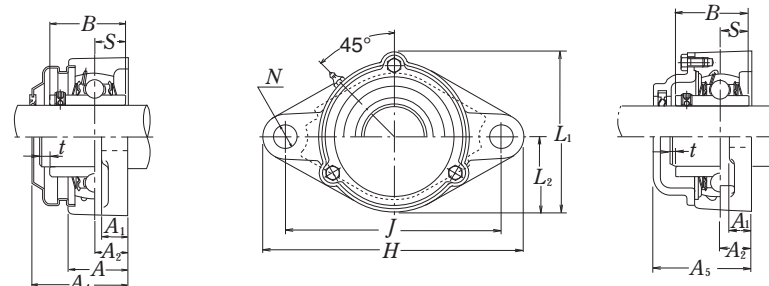
Housing number	Unit number ⁽¹⁾ pressed steel dust cover type	Unit number ⁽¹⁾ cast dust cover type	Nominal dimensions					Mass of unit		
			t max.	mm inch				kg lb		
				A ₄	A ₅	L ₁	L ₂	UCFL	Z(ZM)	C(CM)
FL209D1	Z(ZM)-UCFL209D1	C(CM)-UCFL209D1	3	57	70	113	54	1.8	1.9	2.3
FL209D1	Z(ZM)-UCFL209-110D1	C(CM)-UCFL209-110D1								
FL209D1	Z(ZM)-UCFL209-111D1	C(CM)-UCFL209-111D1	1/8	2 1/4	2 3/4	4 7/16	2 1/8	4.0	4.2	5.1
FL209D1	Z(ZM)-UCFL209-112D1	C(CM)-UCFL209-112D1								
FL210D1	Z(ZM)-UCFL210D1	C(CM)-UCFL210D1	3	60	72	120	58	2.0	2.1	2.7
FL210D1	Z(ZM)-UCFL210-113D1	C(CM)-UCFL210-113D1								
FL210D1	Z(ZM)-UCFL210-114D1	C(CM)-UCFL210-114D1	1/8	2 3/8	2 27/32	4 23/32	2 9/32	4.4	4.6	6.0
FL210D1	Z(ZM)-UCFL210-115D1	C(CM)-UCFL210-115D1								
FL210D1	—	C(CM)-UCFL210-200D1								
FL211D1	Z(ZM)-UCFL211D1	C(CM)-UCFL211D1	4	64	75	133	65	2.9	3.0	3.4
FL211D1	Z(ZM)-UCFL211-200D1	C(CM)-UCFL211-200D1								
FL211D1	Z(ZM)-UCFL211-201D1	C(CM)-UCFL211-201D1	5/32	2 1/2	2 15/16	5 1/4	2 9/16	6.4	6.6	7.5
FL211D1	Z(ZM)-UCFL211-202D1	C(CM)-UCFL211-202D1								
FL211D1	Z(ZM)-UCFL211-203D1	C(CM)-UCFL211-203D1								
FL212D1	Z(ZM)-UCFL212D1	C(CM)-UCFL212D1	4	74	86	144	70	3.8	4.0	4.6
FL212D1	Z(ZM)-UCFL212-204D1	C(CM)-UCFL212-204D1								
FL212D1	Z(ZM)-UCFL212-205D1	C(CM)-UCFL212-205D1	5/32	2 29/32	3 3/8	5 21/32	2 3/4	8.4	8.9	10
FL212D1	Z(ZM)-UCFL212-206D1	C(CM)-UCFL212-206D1								
FL212D1	—	C(CM)-UCFL212-207D1								
FL213D1	Z(ZM)-UCFL213D1	C(CM)-UCFL213D1	4	76	90	157	78	4.8	4.9	5.8
FL213D1	Z(ZM)-UCFL213-208D1	C(CM)-UCFL213-208D1	5/32	3	3 17/32	6 3/16	3 1/16	11	11	15
FL213D1	Z(ZM)-UCFL213-209D1	C(CM)-UCFL213-209D1								
FL214D1	—	C(CM)-UCFL214D1	4	—	98	164	80	5.4	—	7.7
FL214D1	—	C(CM)-UCFL214-210D1								
FL214D1	—	C(CM)-UCFL214-211D1	5/32	—	3 27/32	6 15/32	3 5/32	12	—	17
FL214D1	—	C(CM)-UCFL214-212D1								

Note (1) These numbers indicate relubricatable type. If maintenance free type is needed, please order without suffix "D1".

Rhombus flanged units cast housing
Set screw type



Pressed steel dust cover type
Open end Z-UCFL...D1
Closed end ZM-UCFL...D1



Cast dust cover type
Open end C-UCFL...D1
Closed end CM-UCFL...D1

Shaft dia.	Unit number ⁽¹⁾	Nominal dimensions											Bolt size	Bearing number
		mm inch												
		H	J	A ₂	A ₁	A	N	L	A ₀	B	S			
75 213/16 27/8 215/16 3	UCFL215D1 UCFL215-213D1 UCFL215-214D1 UCFL215-215D1 UCFL215-300D1	275	225	34	22	56	23	165	78.5	77.8	33.3	M20	UC215D1 UC215-213D1 UC215-214D1 UC215-215D1 UC215-300D1	
80 31/16 31/8 33/16	UCFL216D1 UCFL216-301D1 UCFL216-302D1 UCFL216-303D1	290	233	34	22	58	25	180	83.3	82.6	33.3	M22	UC216D1 UC216-301D1 UC216-302D1 UC216-303D1	
85 31/4 35/16 37/16	UCFL217D1 UCFL217-304D1 UCFL217-305D1 UCFL217-307D1	305	248	36	24	63	25	190	87.6	85.7	34.1	M22	UC217D1 UC217-304D1 UC217-305D1 UC217-307D1	
90 31/2	UCFL218D1 UCFL218-308D1	320	265	40	24	68	25	205	96.3	96	39.7	M22	UC218D1 UC218-308D1	

Note ⁽¹⁾ These numbers indicate relubricatable type. If maintenance free type is needed, please order without suffix "D1".

Housing number	Unit number ⁽¹⁾ pressed steel dust cover type	Unit number ⁽¹⁾ cast dust cover type	Nominal dimensions					Mass of unit		
			mm inch					kg lb		
			t max.	A ₄	A ₅	L ₁	L ₂	UCFL	Z(ZM)	C(CM)
FL215D1 FL215D1 FL215D1 FL215D1 FL215D1	— — — — —	C(CM)-UCFL215D1 C(CM)-UCFL215-213D1 C(CM)-UCFL215-214D1 C(CM)-UCFL215-215D1 C(CM)-UCFL215-300D1	4 5/32	— —	102 41/32	169 621/32	82 37/32	6.0 13	— —	7.1 16
FL216D1 FL216D1 FL216D1 FL216D1	— — — —	C(CM)-UCFL216D1 C(CM)-UCFL216-301D1 C(CM)-UCFL216-302D1 C(CM)-UCFL216-303D1	4 5/32	— —	106 43/16	183 77/32	90 317/32	7.4 16	— —	8.6 19
FL217D1 FL217D1 FL217D1 FL217D1	— — — —	C(CM)-UCFL217D1 C(CM)-UCFL217-304D1 C(CM)-UCFL217-305D1 C(CM)-UCFL217-307D1	5 13/64	— —	114 41/2	192 79/16	95 33/4	8.8 19	— —	10 22
FL218D1 FL218D1	— —	C(CM)-UCFL218D1 C(CM)-UCFL218-308D1	5 13/64	— —	122 413/16	205 81/16	102 41/32	11 24	— —	13 29