

# 新一代无菌、无死角视镜 Aseptic and no Zero-dead Angle sight glass(New type)



NEW



## 应用 Applications

- ◆直通视镜由不锈钢结构和玻璃组成。在食品加工，化妆品，制药和精细化工工业中，可以通过它清晰并且精确的观察到物料的流程。
- ◆A tubular sight-glass is comprised of stainless steel frame and glass. Through it, operator can observe the flowing of the liquid substance clearly and precisely in the fields of food, cosmetics, pharmaceutical and fine chemicals industries.

## 技术规格 Technical specifications

- ◆工作温度: -10℃到120℃
- ◆最大操作压力(bar)
- ◆ Working temp: -10℃ to 120℃
- ◆ Max. Operating pressure (bar) as following

DIN	25	32	40	50	65	80	100
PYREX玻璃glass	10	10	10	8	8	8	8

## 设计和特点 Design and features

- ◆规格: DN25/1"到DN100/4"
- ◆全通径设计
- ◆360° 观察
- ◆可任意角度安装
- ◆Size: DN25/1" to DN100/4"
- ◆Full bore design
- ◆360° observation
- ◆Can be installed at any angle

## 材质 Materials

- ◆保护套: AISI 304
- ◆玻璃: 钢化玻璃
- ◆垫圈: EPDM FDA 177.2600
- ◆液体接触: ASME 316L/304
- ◆Protective sleeve: AISI 304
- ◆Glass: tempered glass
- ◆Gasket: EPDM FDA 177.2600

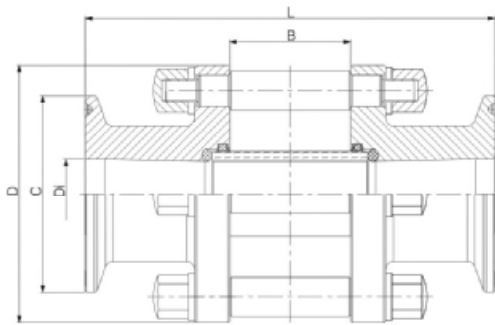
视窗玻璃  
Sight glass

防护套  
Protect sleeve

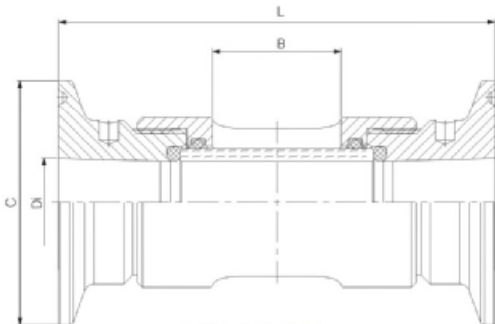


NEW

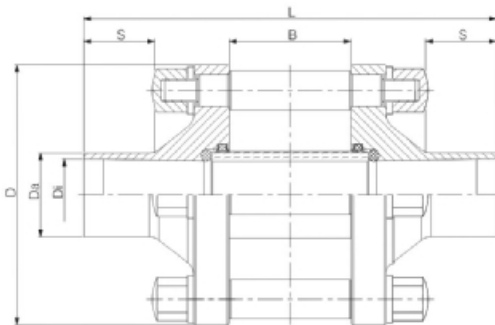




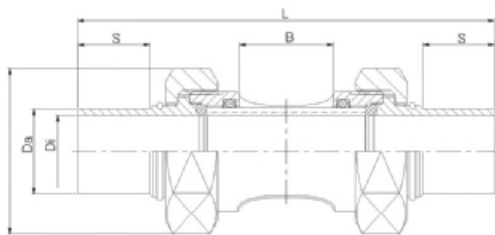
NO.VSJ610N1



NO.VSJ610N2



NO.VSJ600N1



NO.VSJ600N3

Orifice	D (mm)	C (mm)	Di (mm)	B (mm)	L (mm)
<b>BS-OD Dimensions Inline flow indicator with Clamp connection / full view version</b>					
DN1"	73.00	50.50	22.10	36.00	105.00
DN1 1/2"	82.00	50.50	34.80	37.00	105.00
DN2"	100.00	64.00	47.50	54.00	140.00
DN2 1/2"	124.00	77.50	60.20	67.00	151.00
DN3"	135.00	91.00	72.90	97.00	181.00
DN4"	159.00	119.00	97.38	119.00	206.00

Orifice	D (mm)	C (mm)	Di (mm)	B (mm)	L (mm)
<b>DIN Dimensions Inline flow indicator with Clamp connection / full view version</b>					
DN25	80.00	50.50	26.00	32.00	105.00
DN32	80.00	50.50	32.00	32.00	105.00
DN40	90.00	50.50	38.00	41.20	121.00
DN50	100.00	64.00	50.00	67.00	140.00
DN65	130.00	91.00	66.00	67.00	158.00
DN80	145.00	106.00	81.00	110.00	196.00
DN100	160.00	119.00	100.00	97.00	184.00

Orifice	C (mm)	Di (mm)	B (mm)	L (mm)
<b>DIN Dimensions Inline flow indicator with Clamp connection / standard</b>				
ASME DN1/4"	25.00	4.6	20.00	76.00
ASME DN3/8"	25.00	7.75	20.00	76.00
ASME DN1/2"	25.00	9.40	20.00	76.00
ASME DN3/4"	25.00	15.75	30.00	92.00
ASME DN1"	50.50	22.10	30.00	92.00
ASME DN1 1/2"	50.50	34.80	32.00	115.00
ASME DN2"	64.00	47.50	48.00	120.00

Orifice	C (mm)	Di (mm)	B (mm)	L (mm)
<b>DIN Dimensions Inline flow indicator with Clamp connection / standard</b>				
DN08	25.00	8.00	20.00	76.00
DN10	34.00	10.00	20.00	76.00
DN15	50.50	16.00	30.00	92.00
DN20	50.50	20.00	30.00	92.00
DN25	50.50	26.00	32.00	92.00
DN32	50.50	32.00	32.00	92.00
DN40	64.00	38.00	32.00	120.00
DN50	64.00	50.00	48.00	120.00

Orifice	D (mm)	Da (mm)	Di (mm)	L (mm)	S (mm)	B (mm)
<b>BS-OD Dimensions Inline flow indicator with weld end / full view version</b>						
ASME DN1"	73.00	25.40	22.10	149.00	38.10	36.00
ASME DN1 1/2"	82.00	38.10	34.80	152.00	38.10	36.00
ASME DN2"	100.00	50.80	47.50	190.00	38.10	54.00
ASME DN2 1/2"	124.00	63.50	60.20	222.00	38.10	67.00
ASME DN3"	135.00	76.20	72.90	241.00	38.10	97.00
ASME DN4"	159.00	101.60	97.40	263.00	38.10	119.00

Orifice	D (mm)	Da (mm)	Di (mm)	L (mm)	S (mm)	B (mm)
<b>DIN Dimensions Inline flow indicator with weld end / full view version</b>						
DN25	73.00	29.00	26.00	115.00	18.00	36.00
DN32	82.00	35.00	32.00	115.00	18.00	36.00
DN40	82.00	41.00	38.00	125.00	20.00	41.20
DN50	100.00	53.00	50.00	156.00	20.00	65.00
DN65	124.00	70.00	66.00	158.00	20.00	67.00
DN80	145.00	85.00	81.00	207.00	20.00	97.00
DN100	160.00	104.00	100.00	214.00	25.00	118.40

Orifice	D (mm)	Da (mm)	Di (mm)	L (mm)	S (mm)	B (mm)
<b>BS-OD Dimensions Inline flow indicator with weld end / standard</b>						
ASME DN1/4"	21.94	6.35	4.60	92.00	18.00	20.20
ASME DN3/8"	25.40	9.50	7.70	107.30	25.10	21.00
ASME DN1/2"	31.18	12.70	9.40	107.00	25.40	18.00
ASME DN3/4"	36.95	19.05	15.75	120.00	25.10	20.00
ASME DN1"	48.30	24.40	22.10	121.00	25.40	30.00
ASME DN1 1/2"	62.00	38.10	34.80	136.00	25.40	32.00
ASME DN2"	80.00	50.80	47.50	161.50	25.40	48.00

Orifice	D (mm)	Da (mm)	Di (mm)	L (mm)	S (mm)	B (mm)
<b>DIN Dimensions Inline flow indicator with weld end / standard</b>						
DIN DN08	25.40	10.00	8.00	92.50	18.00	17.00
DIN DN10	31.18	12.00	10.00	92.00	18.00	18.00
DIN DN10	31.18	13.00	10.00	92.50	18.00	18.00
DIN DN15	36.95	19.00	16.00	110.00	18.00	20.00
DIN DN20	48.30	23.00	20.00	110.00	18.00	28.00
DIN DN25	48.00	29.00	26.00	110.00	18.00	24.00
DIN DN32	62.00	35.00	32.00	114.50	18.00	24.00
DIN DN40	62.00	41.00	38.00	122.50	18.00	31.00
DIN DN50	80.00	53.00	50.00	154.50	18.00	54.00

