



E-Z PIPECUT NC PIPE CUTTING MACHINE

The TAG E-Z NC Pipe Cutting machine is an NC pipe cutting machine for cutting shapes and concurs in pipes. The TAG E-Z NC Pipe Cutting machine is easy to use and comes with standards cutting shapes for T-Pipe cutting, Elbow Pipe cutting, Saddle Pipe Cutting etc.

The TAG NC Pipe Cutting machine comes standard with the TAG NC controller that allows you to use the standard pre-set loaded shapes witch you can change to your own sizes. The TAG NC Pipe Cutting machine comes standard with CAD/CAM software to make your own cutting programs but gives also the opportunity to up-load your existing cutting drawings in to the TAG NC controller.

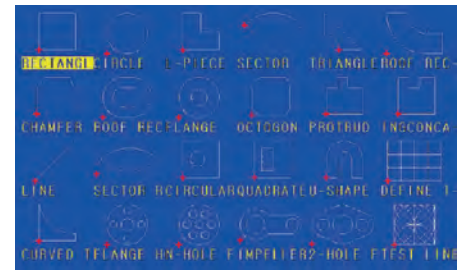
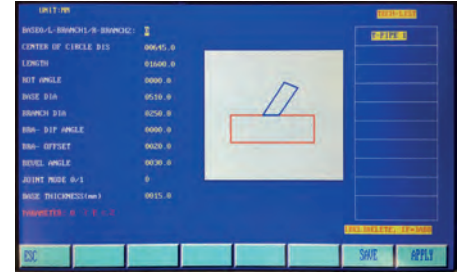
The TAG E-Z NC Pipe Cutting machine comes standard for plasma cutting process, as option available oxy-fuel conversion kit.

Minimal lead-time:

No delivery lead-time
On-demand production

Flexibility in production:

Re-designing of pipes at any time
Production of parts based on fitting to the actual final-product (not only depending on drawing)



TECHNICAL SPECIFICATION

Display	7 inch colour LCD display, 800 * 480 resolution
Speed	2400 mm/min X - Y axes independent in use
Storage	4GB storage capacity
Drive	Step motor drive
Cross-bar	Rack and pinion 1500 mm length with linear guiding
Power	220V
Signal	Arc Volt Divider 50:1
USB	Flash drive connection for loading TXT NC cutting files
Shapes	24 pre-set adjustable cutting shapes / auto nesting
Process	Air Plasma / Oxy-Fuel Universal comparable with all air plasma power sources Oxy-Fuel Universal nozzle mix torch holder
Diameter	24" (600 mm) pipe diameter chain standard
Cutting thickness	20 mm plasma*
Cutting thickness	50 mm oxy-fuel

Scope of delivery

- E-Z NC Pipe Cutting machine body
- NC controller
- Plasma torch holder
- 24" (600 mm) adjustable chain
- CAD/CAM software

