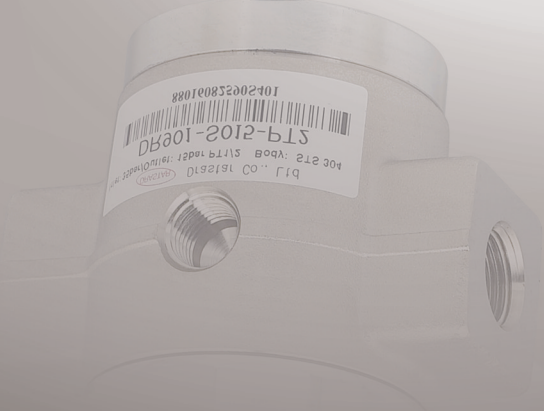
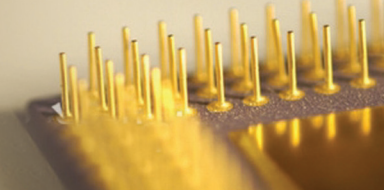


# DR90 S E R I E S

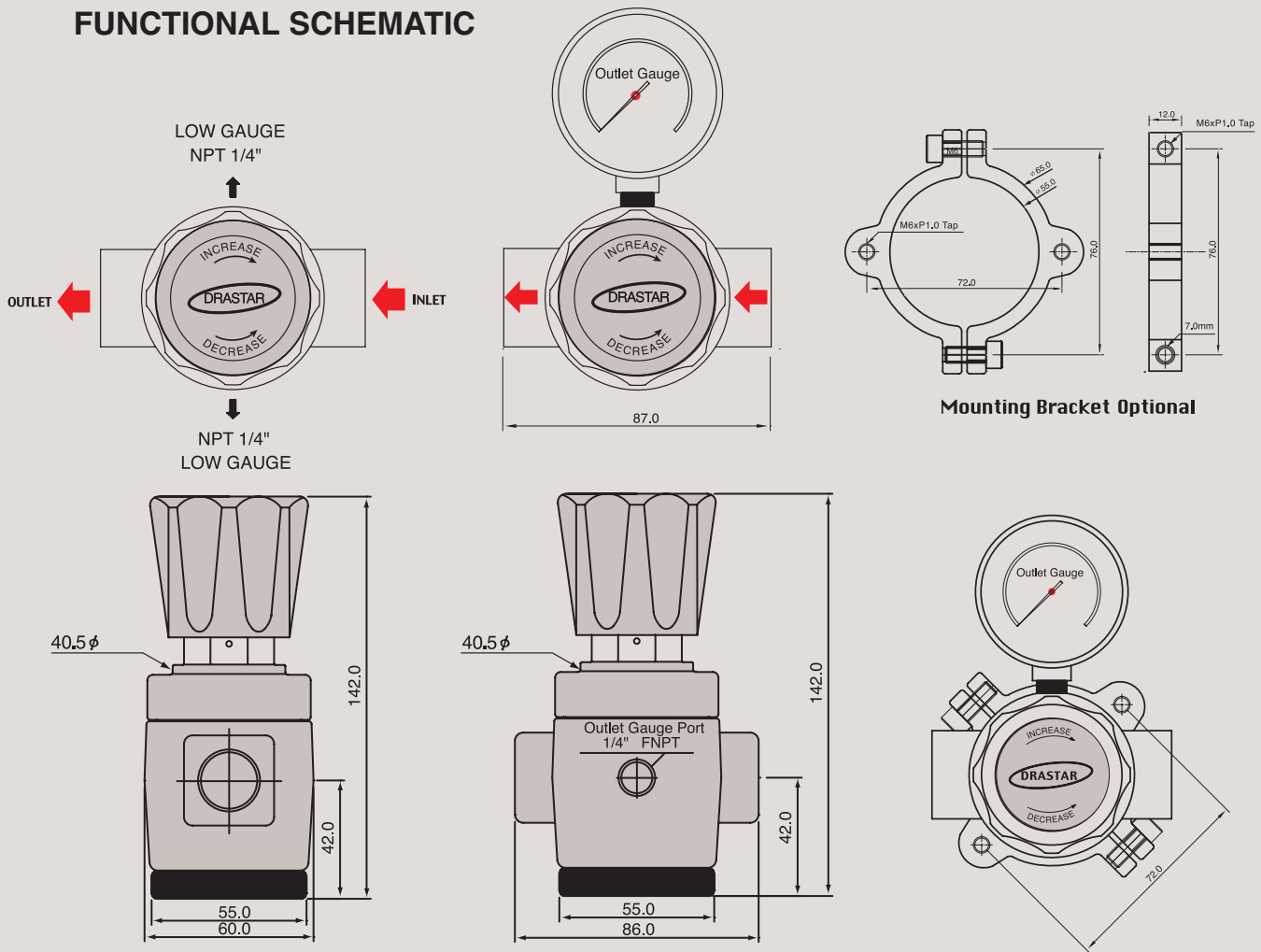


GAS AND DI WATER HIGH FLOW PT TYPE





## FUNCTIONAL SCHEMATIC



### Gas and D/I Water High Flow PT type (1/2", 3/4", 1" )

DR90 시리즈는 D/I Water, 산업용 가스, 에어 또는 물 라인 등에 사용하기에 이상적인 Cv=4.0제품입니다.

- DR905 시리즈는 D/I Water (순수 또는 초 순수) 전용 제품입니다.
- DR90 시리즈의 본체는 모델에 따라 Stainless Steel 316L, 304 또는 Brass로 제작되며, 내부 부품은 Stainless Steel, Valve Seat는 NBR, Viton (DR905)을 사용하여 가스와 물 등에 내구성이 뛰어나며 다이어아후렘은 NBR 또는 Teflon(DR905)을 사용하였습니다.
- 3-Ports PT 3/8", 1/2", 3/4", 1" 중에서 선택 가능합니다.
- 입구압력은 최대 42bar (600psig)이고 출구압력은 모델에 따라 0.3bar(5psig)에서 최대 15bar ( 210psig)까지 사용 가능합니다.

※ 주의 : 크린라인이 아닌 일반 라인에 사용 할 경우 반드시 필터링(gas 7 $\mu$ m ~ 15 $\mu$ m, water 15 $\mu$ m ~ 80 $\mu$ m)을 하여야 하며, 그렇지 않을 경우 바로 고장의 원인이 됩니다. 모든 제품은 필터링하여 사용하면 A/S 비용 절감과 제품의 수명연장에 많은 도움이 됩니다.

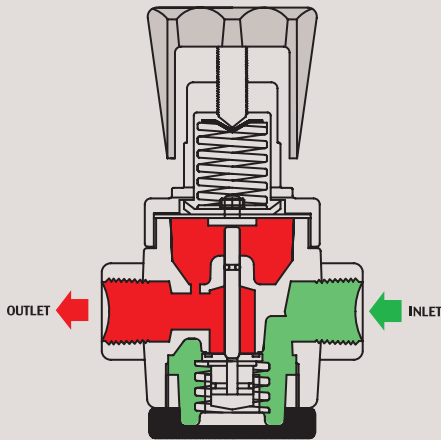
**DR90 Series with Cv4.0 is a PT type pressure reducing regulator ideally designed to use for D/I water, general industrial gases, air or water line. 3/8", 1/2", 3/4", or 1" PT type ports of connection are available.**

### Features & Applications

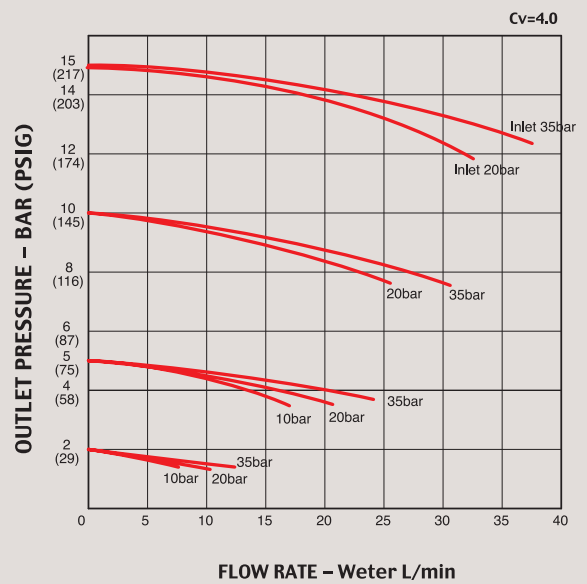
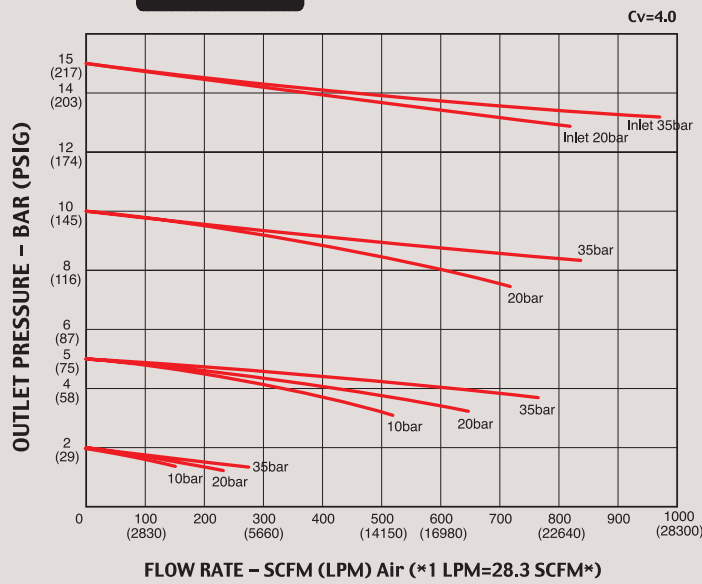
- 3/8", 1/2", 3/4", or 1" PT type port of connection available
- Inlet pressure is 42bar(600psig) and outlet pressures are 5bar(72psig), 10bar(145psig), 15bar(210 psig)
- Panel mounting bracket available as option
- Design proof pressure: 150% of maximum rated
- Suitable for D/I water, industrial gases, air or water line (Cv = 4.0)

**REFERENCE**

This catalogue is printed as of January 2018, and the dimensions and/or specifications in this catalogue can be changed without prior notice in the course of constant upgrading and improvement of our products.



**FLOW CHART**



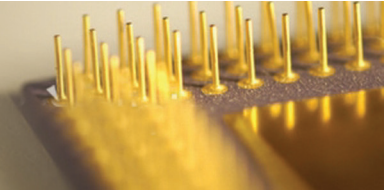
※ DRASTAR's all pressure regulators are assembled, cleaned, inspected, and packed in clean-room equipped with clean bench, helium detector, particle counter, ultrasonic cleaner, ultrapure water system, vacuum packaging machine, etc. through oxygen cleaning procedure in compliance with process and regulations indicated in CGA 4.1. and or ASTM G-93 and are free of any grease or oils.

※ **Caution:** Filtering (gas 7  $\mu\text{m}$ ~15  $\mu\text{m}$ , water 15  $\mu\text{m}$ ~80  $\mu\text{m}$ ) is a MUST to use in the general gas application other than high purity gases. Otherwise, it may cause a failure to the regulators. It is strongly recommended to install filter for extension of life span and saving the maintenance expense.

**ORDERING INFORMATION**

**DR90 - S 005 - PT2**

BASIS SERIES NUMBER	BODY MATERIAL	CONTROLLED PRESS. RANGES	IN & OUT PORTS SIZE
DR901 = Bolt Control DR902 = Knob Control	S = STS 304 or STS 316L	005 = 5bar(72psi)	PT8 = 3/8"
DR905 = Knob Control Only Di Water		010 = 10bar(145psi)	PT2 = 1/2"
Inlet Pressure Max. 42bar(600psi)		015 = 15bar(217psi)	PT3 = 3/4"
			PT1 = 1"



## SPECIFICATIONS

Ports	DR90x-S000-PT8 3/8" Female PT DR90x-S000-PT2 1/2" Female PT DR90x-S000-PT3 3/4" Female PT DR90x-S000-PT1 1" Female PT
Leak Rate Certification	to 2 x 10 <sup>-6</sup> atm cc/sec Helium available
Body Materials	DR90x-S000-PTx Stainless steel 304 DR90x-B000-PTx Nickel Plated Forged Brass
Bonnet Material	Zinc(Zn) Casting Nickel Plated
Diaphragm	Particular of Synthetic Rubber
Main Valve	Stainless steel
Valve Spring	Stainless steel
Valve Seat	Viton
Inlet Pressure Ranges	42bar(600psi)
Outlet Pressure Ranges	DR90x-x005-PTx 5bar(72psi) DR90x-x010-PTx 10bar(145psi) DR90x-x020-PTx 20bar(290psi)
Operating Temperature	-40° C ~ +70° C (-40° F ~ +165° F) Standard
Flow Capacity	3/8", 1/2" Cv = 4.0 Standard 3/4", 1" Cv = 4.5 Standard
Standard Optional	Outlet Gauge

