



## EcoStrip 9380

Welcome to the Future of Entry Level Cut & Strip

- Three-in-one feeding unit
- Improved price to performance ratio
- Simple machine operation thanks to Schleuniger's standardized S.ON user interface
- The latest technology, cleverly combined with Schleuniger's industry renowned precision

CUT & STRIP

# EcoStrip 9380

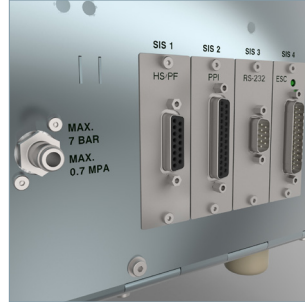
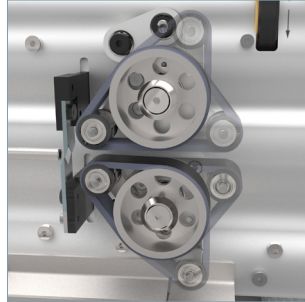
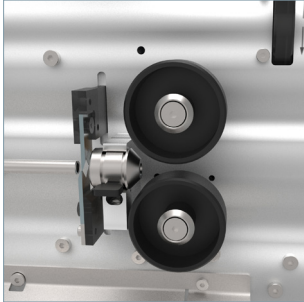
## Simply Capable

**Transforming your expectations:** Get a machine with flexible, all-in-one roller-, belt- and short mode feeding units.

**Cut your cost, strip your efforts:** The machine is economically priced, yet in terms of performance, it exceeds previous models by 20 percent.

**Explore simplicity:** Simple machine operation thanks to Schleuniger's standardized S.ON user interface with 5.7" color touchscreen.

**Precision has a name:** All driven axes are powered by our proven *Bricks* electronic platform.



The EcoStrip 9380 capabilities are significantly expanded due to quick change feeding unit for rollers, belts and short mode processing. With the belt drive you benefit of three configurations: 1. Belt drive, 2. Short mode, 3. Roller drive (butterfly – roller with belt).

Compatible with a wide range of accessories for future expansion, e.g. prefeeding, marking (inkjet on-the-fly), stacking, coiling and tying.

Minimize training and setup time with S.ON software. Cayman and S.WOP compatible for integration into various networks.

Technical Specifications	
Raw Material Diameter	Maximum 8.0 mm (0.31")
Conductor Cross-Section	0.05 – 8 mm <sup>2</sup> (10 mm <sup>2</sup> EN60228 class 5&6)   8 AWG
Blade Set	Up to 1 x 12 mm (1 x 0.47") wide
Feeding Unit	Rollers or Belts
Single Conductor	Yes
Multi-Layer Single Conductor	Yes
Workpiece Length	Maximum 1'000'000 mm (39'370")
Pull-Off Length	Left Side: 46 mm (1.18") Right Side: 152 mm (5.98")
Short mode	Up to 46 mm (18 mm measured on remaining insulation length)
Interfaces	Standard: Ethernet for PC, USB Optional: SMI (I/O's), Prefeeder, Wire marker (HS), Inkjet printing, Stacker / Coiler
Power Supply	100 – 240 VAC
Dimensions (L x W x H)	435 x 397 x 360 mm (17.1 x 15.6 x 14.2")
Weight	25 kg (55.1 lbs.)