

Global Project Wins Driven by Performance



Seawater Reverse Osmosis (RO) Membranes

Overview

LG Chem's NanoH₂O™ seawater RO membranes, incorporated with innovative Thin Film Nanocomposite (TFN) technology, deliver industry-leading salt rejection and 20% more flow than the membranes manufactured from conventional technologies. Our seawater RO membranes significantly reduce the cost of desalination while delivering superior water quality. In LG Chem, we do our utmost to fulfill customer needs and provide additional values from excellent commercial and technical supports. With state-of-the-art technology and customer focus, LG Chem has been awarded more than 3,000 Million Liter per Day (MLD) seawater projects since its establishment.



LG SW SR G2, GR G2 and R G2

The next generation membranes with industry-leading salt rejection



LG SW SR, GR and R | High Rejection Membranes

Well suited for high feed TDS and high permeate quality requirements



LG SW ES | Energy-Saving Membranes

Well suited for low feed TDS and low temperature seawater applications

LG SW G2 Membranes

- With industry's **highest** salt rejection, LG SW G2 membranes can provide
 - **Improved permeate quality** without increasing operating pressure
 - **Reduced energy cost** without sacrificing the permeate quality
 - **Reduced capital and operation costs** for multi-pass SWRO systems

8-inch spiral wound membranes

Product	Active Membrane Area, ft ² (m ²)	Permeate Flow Rate, GPD (m ³ /d)	Stabilized Salt Rejection, %	Minimum Salt Rejection, %	Boron Rejection, %	Feed Spacer, mil
LG SW 440 SR G2	440 (41)	6,600 (25.0)	99.89	99.75	93	28
LG SW 400 SR G2	400 (37)	6,000 (22.7)	99.89	99.75	93	28 or 34
LG SW 440 GR G2	440 (41)	8,250 (31.2)	99.89	99.75	93	28
LG SW 400 GR G2	400 (37)	7,500 (28.4)	99.89	99.75	93	28 or 34
LG SW 440 R G2	440 (41)	9,900 (37.5)	99.88	99.75	93	28
LG SW 400 R G2	400 (37)	9,000 (34.1)	99.88	99.75	93	34

Test Conditions : 32,000 ppm NaCl, 5 ppm boron at 25°C (77°F), 800 psi (55 bar), pH 8, Recovery 8%.

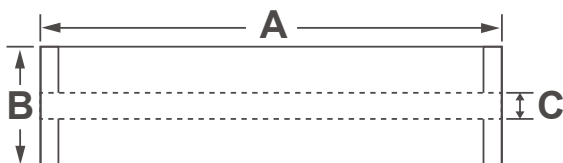
LG SWRO Membranes

8-inch spiral wound membranes

Product	Active Membrane Area, ft ² (m ²)	Permeate Flow Rate, GPD (m ³ /d)	Stabilized Salt Rejection, %	Minimum Salt Rejection, %	Boron Rejection, %	Feed Spacer, mil
LG SW 440 SR	440 (41)	6,600 (25.0)	99.85	99.7	93	28
LG SW 400 SR	400 (37)	6,000 (22.7)	99.85	99.7	93	28 or 34
LG SW 440 GR	440 (41)	8,250 (31.2)	99.85	99.7	93	28
LG SW 400 GR	400 (37)	7,500 (28.4)	99.85	99.7	93	28 or 34
LG SW 440 R	440 (41)	9,900 (37.5)	99.85	99.7	93	28
LG SW 400 R	400 (37)	9,000 (34.1)	99.85	99.7	93	28 or 34
LG SW 440 ES	440 (41)	15,070 (57.0)	99.80	99.6	89	28
LG SW 400 ES	400 (37)	13,700 (51.9)	99.80	99.6	89	34

Test Conditions : 32,000 ppm NaCl, 5 ppm boron at 25°C (77°F), 800 psi (55 bar), pH 8, Recovery 8%.

Product Dimensions



A mm (in.)	B mm (in.)	C mm (in.)	Weight kg (lbs.)
1,016 (40)	200 (7.9)	28.6 (1.125)	16 (35)

Operating Specifications

Max. Applied pressure	1,200 psi (82.7 bar)
Max. Chlorine concentration	< 0.1 ppm
Max. Operating temperature	45°C (113°F)
pH Range, Continuous (Cleaning)	2-11 (2-13)
Max. Feedwater turbidity	1.0 NTU
Max. Feedwater SDI (15 mins)	5.0
Max. Feed flow	75 gpm (17 m ³ /h)
Min. Ratio of concentrate to permeate flow for any element	5 : 1
Max. Pressure drop (ΔP) for each element	15 psi (1.0 bar)

The information contained herein are deemed to be accurate and reliable and are offered in good faith, but without guarantee of performance. LG Chem assumes no liability for results obtained or damages incurred through the application of the information contained herein. Customer is responsible for determining whether the products and information presented are appropriate for the customer's use and for ensuring that customer's workplace and disposal practices are in compliance with applicable laws and other governmental enactments. Specifications subject to change without notice. NanoH₂O is the Trademark of LG Chem. All rights reserved. © LG Chem, Ltd.

Contact LG Water Solutions www.lgwatersolutions.com | waterinfo@lgchem.com