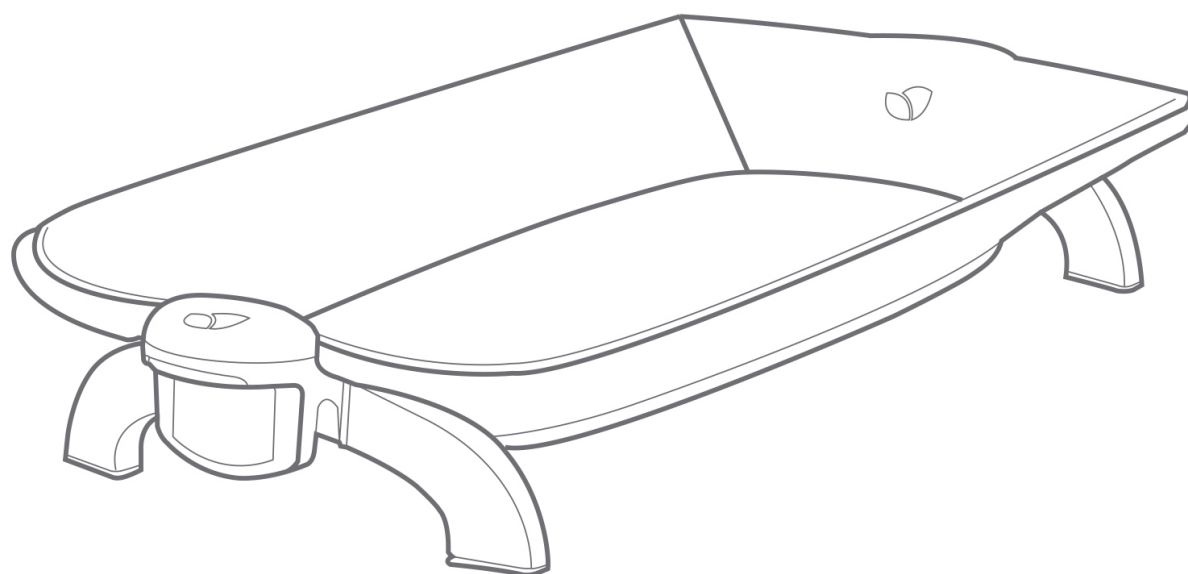


Joie™

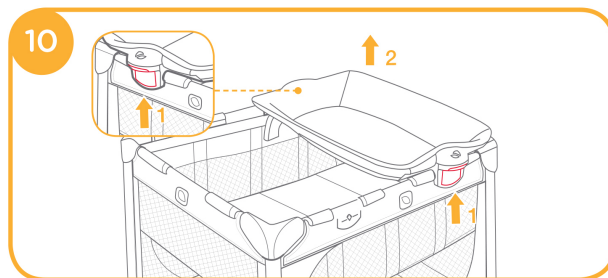
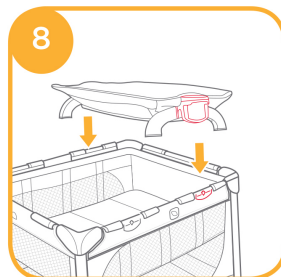
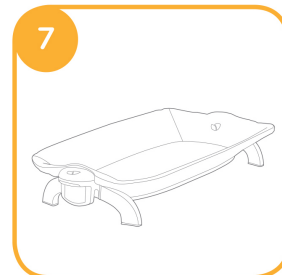
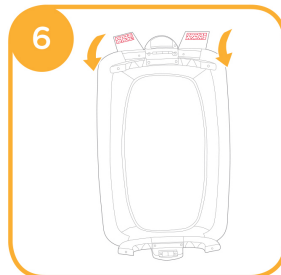
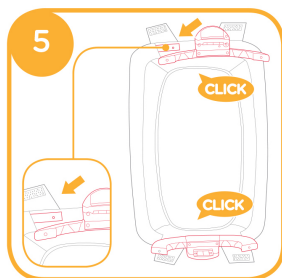
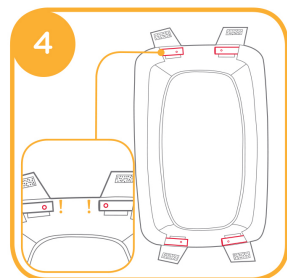
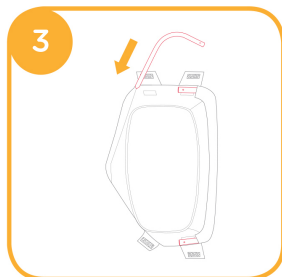
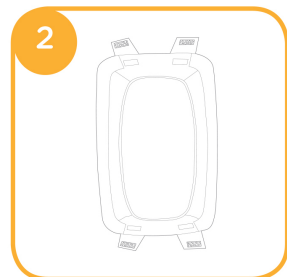
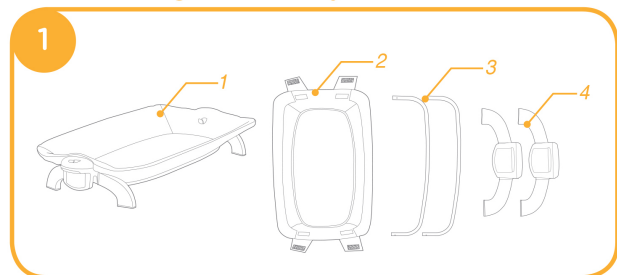
birth to 11 kg (0 - 12 months)

change changer

GB Instruction Manual



Lift Off Changer Assembly



! IMPORTANT RETAIN FOR FUTURE REFERENCE: READ CAREFULLY.

Emergency

In case of emergency or accident, immediately seek medical attention for your child.

Product Information

Read all the instructions in this manual before using this product. If you have any further questions, please consult the retailer.

Product	Change
Suitable for	Discontinue using changer when child reaches 11 kg (approximately 0 - 12 months) or is able to climb out
Materials	Plastics, metal, fabrics
Patent No.	Patents pending
Made in	China
Brand Name	Joie
Website	www.joiebaby.com
Manufacturer	Joie Children's Products (UK) Limited

Parts List

see images ①

Make sure all parts are available before assembly. If any part is missing, please contact local retailer. No tools are required for assembly.

1.1 Changer 1.2 Soft Goods 1.3 Support Tube (X2) 1.4 Support Plastic Assembly (X2)

WARNING

- ! Adult assembly required.
- ! Please save instruction manual for future reference.
- ! You must follow the instructions in this manual when using the product.
- ! Discontinue using changer when child reaches 11 kg (approximately 0 - 12 months) or is able to climb out or is can sit unaided.
- ! DO NOT make any modifications to this changer or use it with component parts from other manufacturers.
- ! DO NOT use the product if any parts are broken, torn or missing.
- ! DO NOT leave the child unattended. Always keep your child in view.
- ! Be aware of the risk of open fire and other sources of strong heat such as electrical heater, gas fires, etc in the vicinity of the product.
- ! To avoid strangulation, DO NOT place items with a string around your child's neck, suspend strings from this product.
- ! All assembly fittings should be unfolded completely and tightened properly before using the product.
- ! Regularly check and retighten as necessary the locks and fittings for security.
- ! Regularly inspect the product for damaged hardware, loose joints, missing parts or sharp edges.
- ! To avoid suffocation, remove plastic bag and packaging materials before using this product. The plastic bag and packaging materials should then be kept away from babies and children.
- ! This product is not intended for prolonged periods of sleeping.
- ! It is dangerous to use this product on an elevated surface e.g. a table.
- ! Do not use accessories or replacement parts other than those approved by the manufacturer.
- ! Please remove unused changer from travel cot to avoid hurting child as misusing.

Lift Off Changer Assembly

see images ① - ⑩

- ! The changer can be used independently.

Care and Maintenance

1. Your product can be spot cleaned with a sponge and soapy water.
2. Do not use undiluted neutral detergent, gasoline or other organic solvent to wash the product. It may cause damage to the product.
3. From time to time, check your product for worn parts, torn material or stitching. Replace or repair the parts as needed.
4. If the product is not in use for a long period of time, please put it in the shade where your child cannot access it.

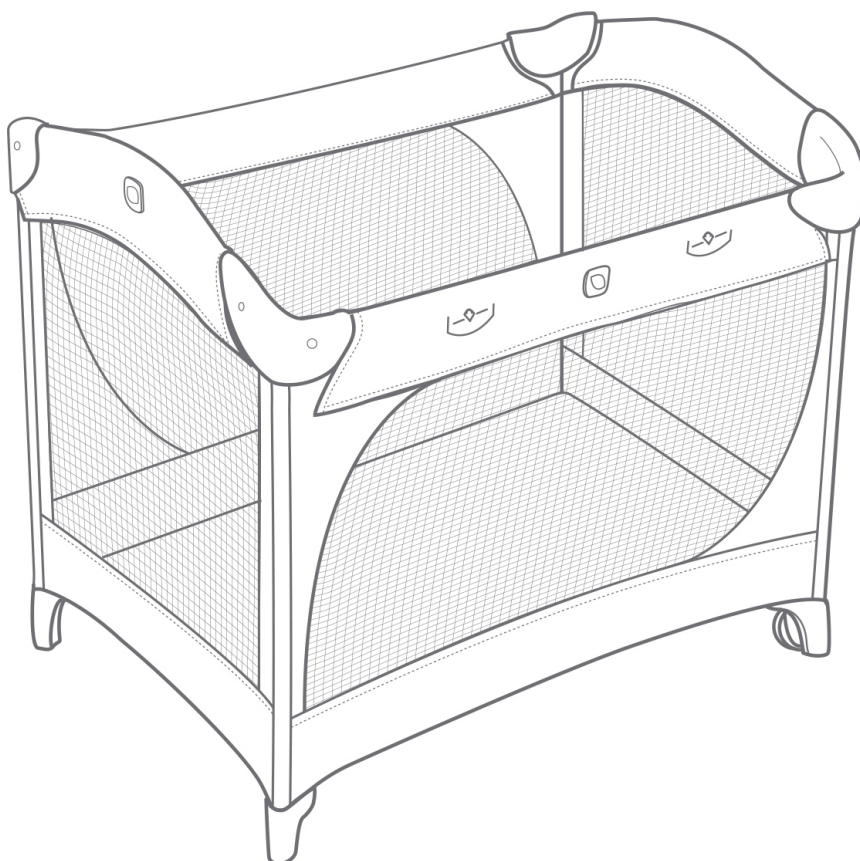


birth to 15kg

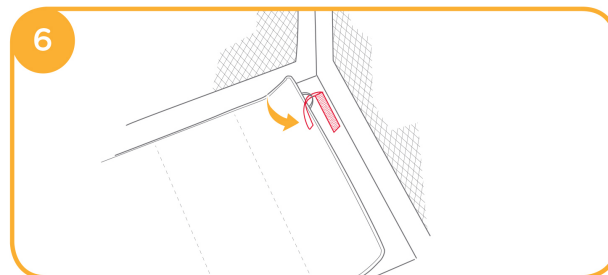
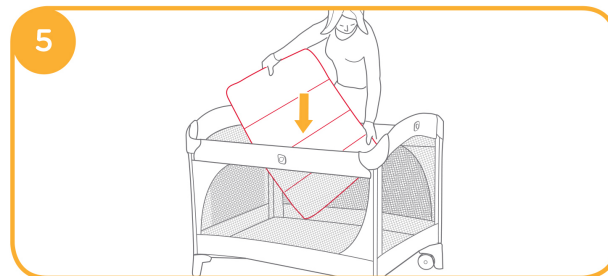
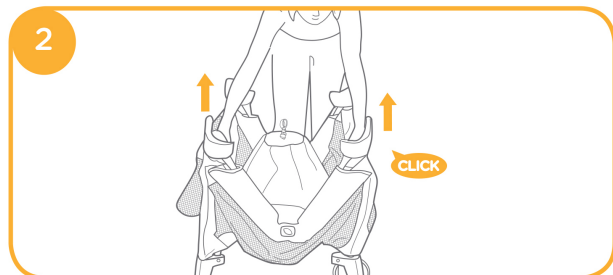
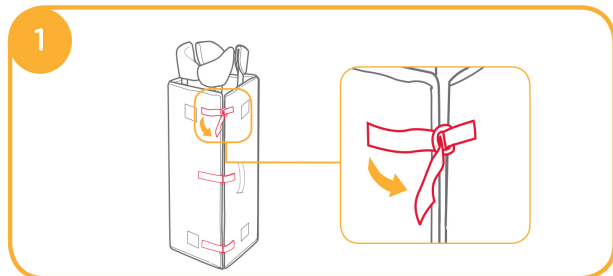
commuterTM

travel cot

GB Instruction Manual



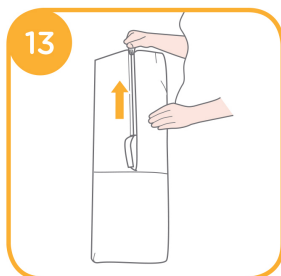
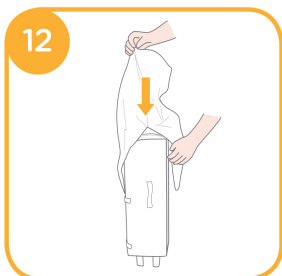
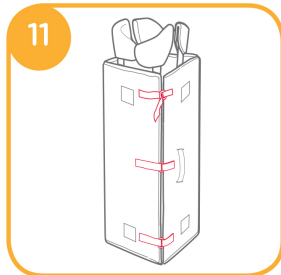
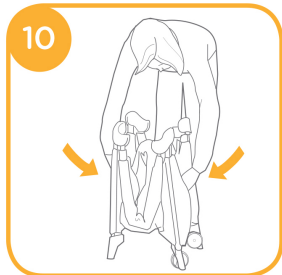
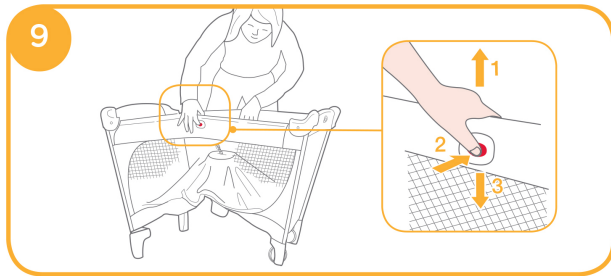
Travel Cot Assembly



Fold Travel Cot



FIGURE 9 - 13



Accessories (May not be included in purchase)
Accessories may be sold separately or may not be available depending on region.

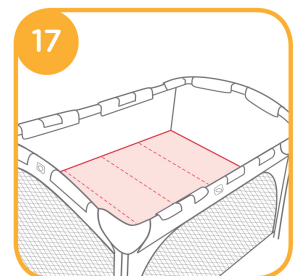
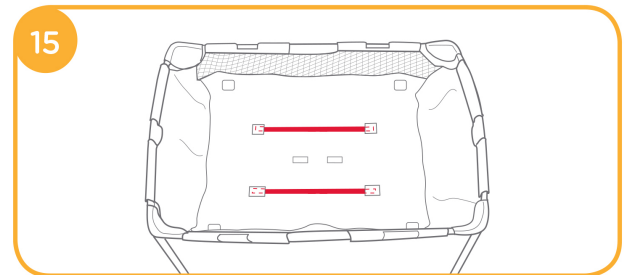
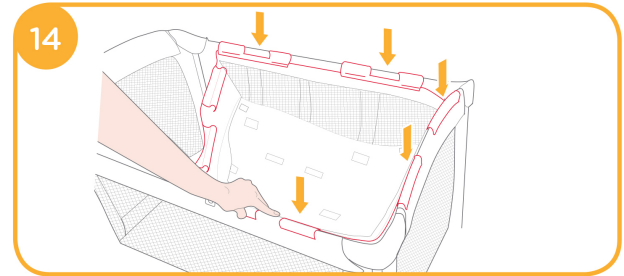


FIGURE 14 - 17

GB Welcome to Joie™

Congratulations on becoming part of the Joie family! We are so excited to be part of your life with your little one. While using the Joie commuter™, your baby is enjoying a high quality, fully certified travel cot, approved to European safety standards EN 716-1/2:2017. This product is suitable for use with children weighing under 15kg (approximately 0-4 years). Please carefully read this manual and follow each step to ensure a comfortable sleeping and best protection for your child.

Please keep the Instruction Manual handy for future reference.

Visit us at Joiebaby.com to download manuals and see more exciting Joie products.

**! IMPORTANT
RETAIN FOR FUTURE
REFERENCE: READ CAREFULLY.**

Emergency

In case of emergency or accident, immediately seek medical attention for your child.

Product Information

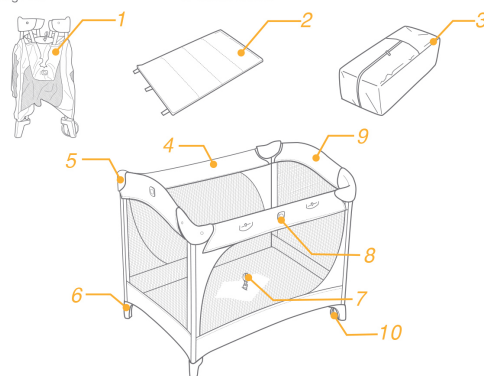
Read all the instructions in this manual before using this product. If you have any further questions, please consult the retailer. Some features may vary depending on model.

Product	Commuter Travel Cot
Suitable for	Discontinue using travel cot when child reaches 15 kg (approximately 0 - 48 months) or is able to climb out
Materials	Plastics, metal, fabrics
Patent No.	Patents pending
Made in	China
Brand Name	Joie
Website	www.joiebaby.com
Manufacturer	Joie Children's Products (UK) Limited

Parts List

Make sure all parts are available before assembly. If any part is missing, please contact local retailer. No tools are required for assembly.

- | | | |
|--------------|-------------------|--------------|
| 1 Travel Cot | 5 Corner | 9 Short Rail |
| 2 Mattress | 6 Foot | 10 Wheels |
| 3 Carry Bag | 7 Folding Webbing | |
| 4 Long Rail | 8 Latch Button | |



Accessories (May not be included)

Make sure all parts are available before assembly. If any part is missing, please contact local retailer. No tools are required for assembly.

- 1 Bassinet
- 2 Tube



Accessories may be sold separately or may not be available depending on region.

WARNING

- ! Adult assembly required.
- ! Please save instruction manual for future reference.
- ! Read all the instructions in this manual before using product.
- ! Discontinue using travel cot when child reaches 15 kg (approximately 86 cm in height) or is able to climb out.
- ! Discontinue using bassinet when child can sit, kneel or roll over or pull itself up (approximately 0 - 6 months).
- ! The lowest position of the mattress is the safest. The mattress should always be used in the lowest position as soon as the baby is old enough to sit up.
- ! Failure to follow these warnings and instructions could result in danger.
- ! DO NOT make any modifications to this travel cot or use it with component parts from other manufacturers.
- ! Warning: Do not use the cot if any part is broken, torn or missing and use only spare parts approved by the manufacturer.
- ! NEVER leave your child unattended. Always keep your child in view.
- ! Use the travel cot with only one child at a time.
- ! Do NOT use more than one mattress in the travel cot.
- ! Once the bassinet is installed, DO NOT place child under the bassinet.
- ! DO NOT leave anything in the travel cot or place the travel cot close to another product, This could provide a foothold or present a danger of suffocation or strangulation, e.g. strings, blind curtain cords etc.
- ! Always use travel cot on a flat, level floor.
- ! Be aware of the risk of open fire and other sources of strong heat such as electric bar fires, gas fires, etc in the near vicinity of the product.
- ! To avoid strangulation, DO NOT place items with a string around your child's neck, suspend strings from this product.
- ! All assembly fittings should always be tightened properly and that fittings should be checked regularly and retightened as necessary.
- ! Regularly inspect the product for damaged hardware, loose joints, missing parts or sharp edges.
- ! DO NOT move the travel cot with your child in it.

- ! Make sure the product has been folded or unfolded completely before letting your child approach the travel cot.
- ! You must attend to your child while it is in the bassinet. Do not place the bassinet in a dangerous place.
- ! For safe fitting the mattress must not be less than 990 mm in length and 660 mm in width. The length and width must be such that the gap between the mattress and the sides and ends does not exceed 30 mm. The thickness of the mattress must not be more than 25 mm, that the internal height (the distance from the top of the mattress to the upper edge of the product side) is at least 500 mm in the lowest position of the travel cot and at least 200 mm in the highest position of the travel cot.
- ! Do not replace Joie mattress with other mattress or soft pad.
- ! Should the padded rim be split or bitten through to expose the padding, do not use the travel cot.
- ! The cot is ready for use only when the locking mechanisms are engaged and to check carefully that they are fully engaged before using the folding cot.
- ! Always keep accessories out of child's reach. Remove the accessories when child is able to pull itself up in the travel cot.
- ! DO NOT use the bassinet as a napper before assembling with mattress.
- ! DO NOT store the bassinet in the travel cot while not in use.
- ! You must follow the instructions in this manual when using the product.
- ! To avoid suffocation, remove plastic bag and packaging materials before using this product. The plastic bag and packaging materials should then be kept away from babies and children.
- ! Only use the mattress sold with this cot, do not add a second mattress on this one, suffocation hazards.

IMPORTANT!
KEEP FOR FUTURE REFERENCE.

Travel Cot Assembly

see images ① - ⑥

Lock the rails

1. Pull the short rails up until both become rigid. If not rigid, pull up again until they are rigid. ②
2. Latch the long rails. ③
3. Push the center of floor down. ④
 - ! Be sure all rails have locked before lowering center.

Fold Travel Cot

see images ⑦ - ⑩

- ! Do not unlock rails yet. Center of floor must be halfway up before rails will unlock.
- ! Do not force fold.
- ! Both tubes must be released for the rail to fold, if rail does not fold completely, please lift the center of floor higher, and then try again from step 3.
- ! If unit will not fold, look for a partially latched rail. Squeeze the latch button to release the rail.

Accessories (May not be included)

Bassinet Assembly

see images ⑪ - ⑰

Care and Maintenance

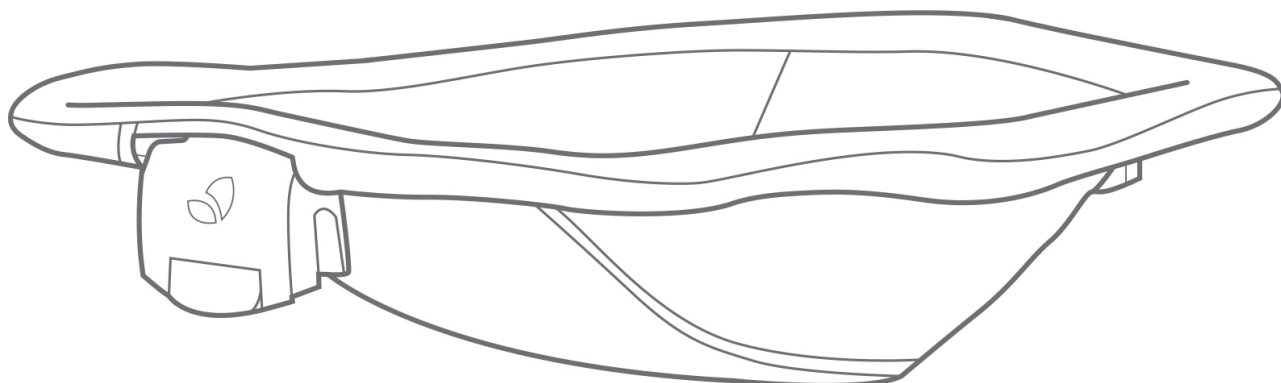
1. The covering material is not removable.
2. Your travel cot can be spot cleaned with a sponge and soapy water.
3. Do not use undiluted neutral detergent, gasoline or other organic solvent to wash the travel cot. It may cause damage to the travel cot.
4. To wash carry bag, machine wash in lukewarm water and drip-dry. Do not use bleach.
5. At the beach or in the garden, clean sand and grit off your travel cot. Sand in the top rail locks may cause damage.
6. From time to time, check your travel cot for worn parts, torn material or stitching. Replace or repair the parts as needed.
7. If the travel cot is not in use for a long period of time, please put it in the shade where your child cannot access it.

Joie™

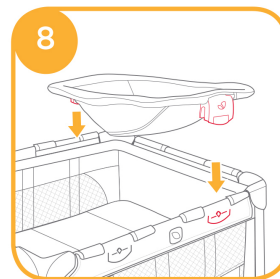
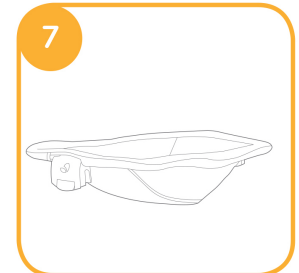
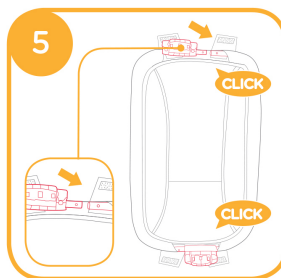
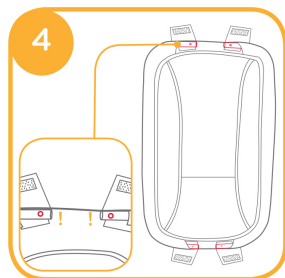
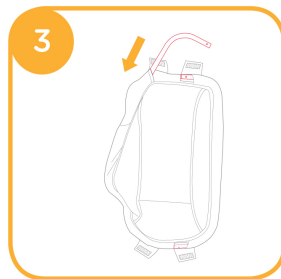
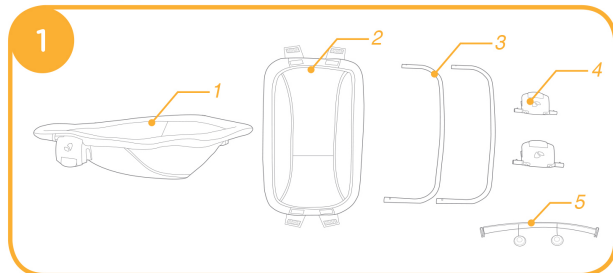
birth to 9 kg (0 - 6 months)

snooze

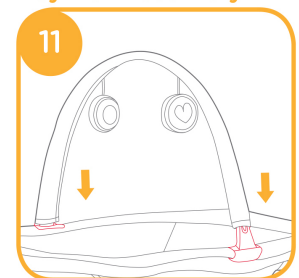
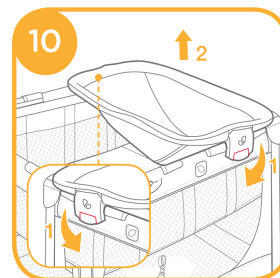
napper



Basic Napper Assembly



Toy Bar Assembly



! IMPORTANT RETAIN FOR FUTURE REFERENCE: READ CAREFULLY.

Emergency

In case of emergency or accident, immediately seek medical attention for your child.

Product Information

Read all the instructions in this manual before using this product. If you have any further questions, please consult the retailer.

Product Suitable for	Snooze Discontinue using napper when child reaches 9 kg (approximately 0 - 6 months) or is able to climb out
Materials	Plastics, metal, fabrics
Patent No.	Patents pending
Made in	China
Brand Name	Joie
Website	www.joiebaby.com
Manufacturer	Joie Children's Products (UK) Limited

WARNING

- ! Adult assembly required.
- ! Please save instruction manual for future reference.
- ! You must follow the instructions in this manual when using the product.
- ! Discontinue using napper when child reaches 9 kg (approximately 0 - 6 months) or is able to climb out or is can sit unaided.
- ! DO NOT make any modifications to this changer or use it with component parts from other manufacturers.
- ! DO NOT use the product if any parts are broken, torn or missing.
- ! DO NOT leave the child unattended. Always keep your child in view.
- ! Be aware of the risk of open fire and other sources of strong heat such as electric bar fires, gas fires, etc in the vicinity of the product.
- ! To avoid strangulation, DO NOT place items with a string around your child's neck, suspend strings from this product, or attach strings to toys.
- ! To prevent possible injury by entanglement, remove this toy when the child starts trying to get up on its hands and knees in a crawling position.
- ! Never use the toy bar to carry the product.
- ! All assembly fittings should be unfolded completely and tightened properly before using the product.
- ! Regularly check and retighten as necessary the locks and fittings for security.
- ! Regularly inspect the product for damaged hardware, loose joints, missing parts or sharp edges.
- ! To avoid suffocation, remove plastic bag and packaging materials before using this product. The plastic bag

and packaging materials should then be kept away from babies and children.

- ! This product is not intended for prolonged periods of sleeping.
- ! It is dangerous to use this product on an elevated surface e.g. a table.
- ! Do not use accessories or replacement parts other than those approved by the manufacturer.
- ! Please remove unused napper from travel cot to avoid hurting child as misusing.

Basic Napper Assembly

see images 1 - 10

- ! The changer must be used with travel cot on the part of Joie models.

Toy Bar Assembly

see images 11

Care and Maintenance

1. Your product can be spot cleaned with a sponge and soapy water.
2. Do not use undiluted neutral detergent, gasoline or other organic solvent to wash the product. It may cause damage to the product.
3. From time to time, check your product for worn parts, torn material or stitching. Replace or repair the parts as needed.
4. If the product is not in use for a long period of time, please put it in the shade where your child cannot access it.



Joie Children's Products (UK) Ltd,
Venture Point, Towers Business Park
Rugeley, Staffordshire, WS15 1UZ

bring the kids™
Share the joy at joiebaby.com

JK002_V1408\$D