



* Last in Time *

Charts

These charts are made by Annie Germeaad from the Facebook group "[Anyone's Shawls groep](#)". Thank you Annie for the time and effort you put in making these <3



Lost in Time NL		US
o	= L = losse	ch = chain
x	= V = vaste	sc = single crochet
↑	= St = Stokje	dc = double crochet
f	= RV = reliëfstokje van voren	fpdc (front post dc)
⌊	= RA = reliëfstokje van achteren	bpdc (back post dc)
⊕	= pop coeren	pop coeren
⊕	= popcoeren in de 2e keer er onder	popcoeren in 2nd row below
⊕	= V + pivot + V in 2e keer er onder	sc + pivot + sc in second row below
J	= Hv (halve vaste) in voorste lus steek vorige keer	Sl.st = slip stitch in front loop stitch last row

COPYRIGHT MIJOCROCHET 2017

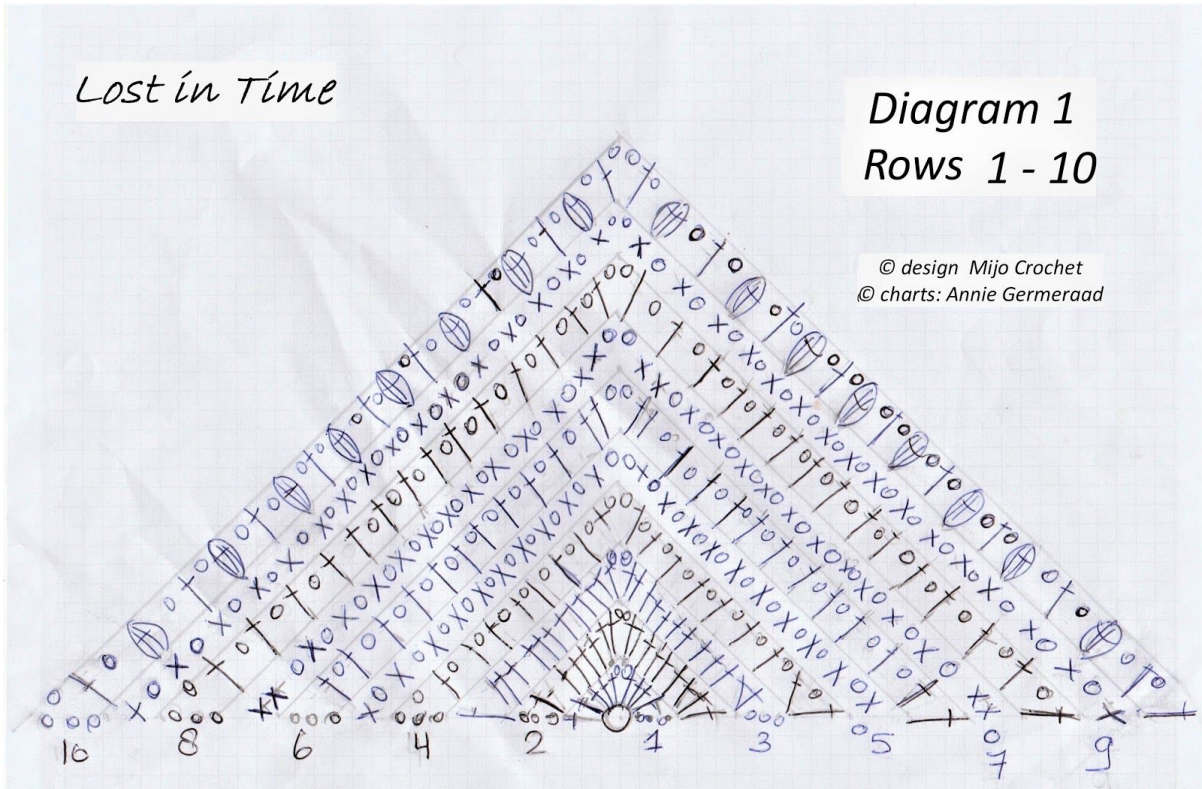
WWW.MIJOCROCHET.WORDPRESS.COM

INSTAGRAM: @MIJOCROCHET • FACEBOOK: MIJOCROCHET

Lost in Time

Diagram 1
Rows 1 - 10

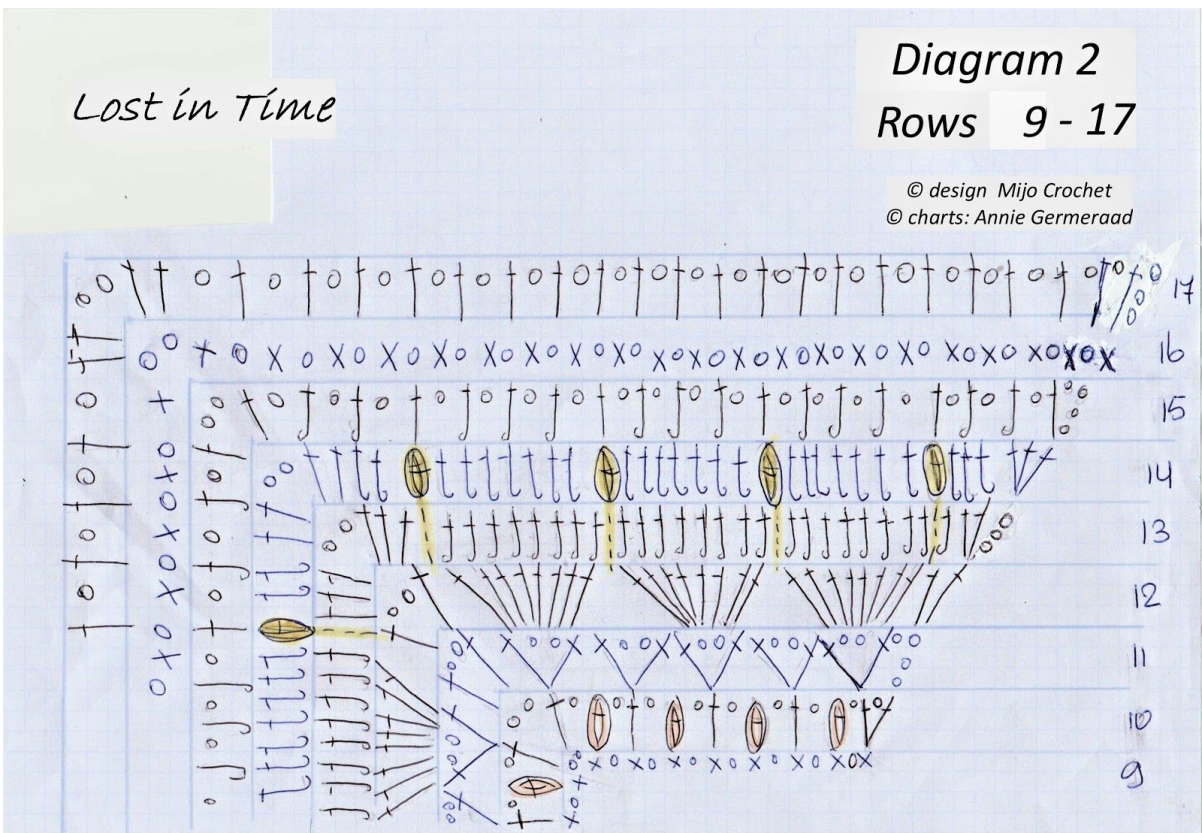
© design Mijo Crochet
© charts: Annie Germeeraad



Lost in Time

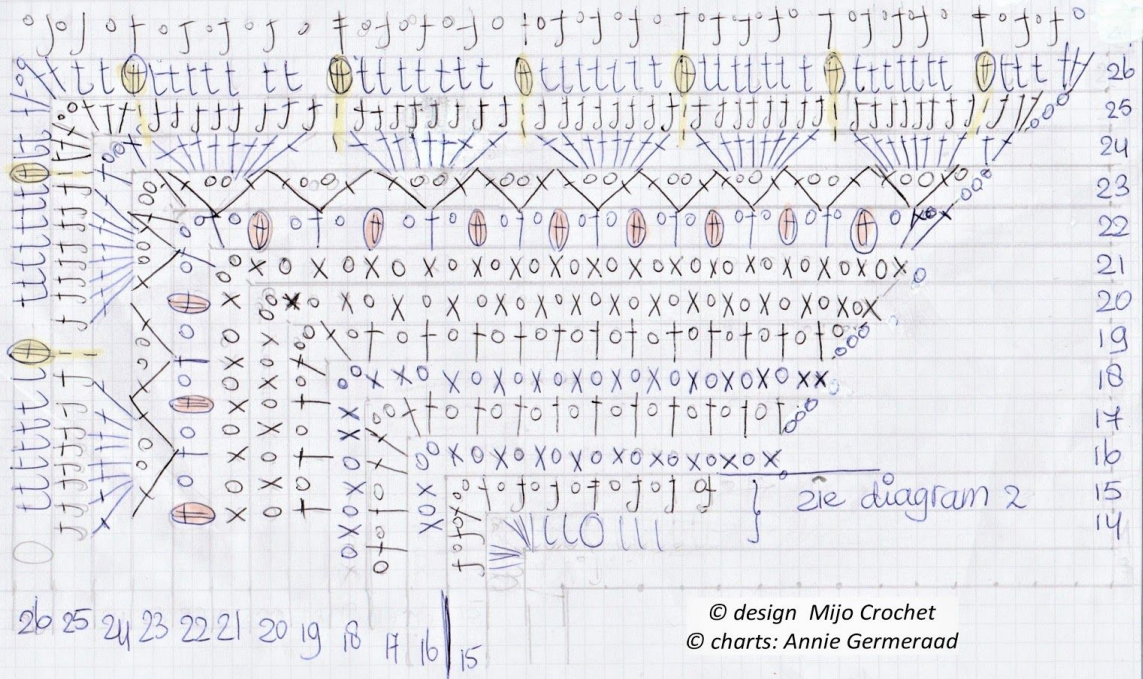
Diagram 2
Rows 9 - 17

© design Mijo Crochet
© charts: Annie Germeeraad



Lost in Time

Diagram 3
Rows 14 - 26



Lost in Time

Diagram 4
Rows border 1-3

