



## ABBREVIATIONS:

**Approx** =

Approximate(ly)

**Beg** = Begin(ning)

**Ch** = Chain(s)

**Pat** = Pattern

**Rem** = Remain(ing)

**Rep** = Repeat

**RS** = Right side

**Sc** = Single crochet

**Sl st** = Slip stitch

**Sp(s)** = Space(s)

**St(s)** = Stitch(es)

**Tog** = Together

**WS** = Wrong side

 CROCHET | SKILL LEVEL: INTERMEDIATE

## MEASUREMENTS

Approx 24" [61 cm] wide x 93" [236 cm] long, excluding fringe.

## GAUGE

12 sts and 11 rows = 4" [10 cm] in pat.

## INSTRUCTIONS

**Note:** Wind balls of the colors to be used, one for each separate area of color in the design. To change color, work to last 2 loops on hook and draw new color through last 2 loops and proceed, keeping color change to WS of work.

With A, ch 72. See chart on page 4.

**1st row:** (RS). With A, 1 sc in 2nd ch from hook. (Ch 1. Skip next ch. 1 sc in next ch) 5 times, joining B in last sc. \*With B, 1 sc in next ch. (Ch 1. Skip next ch. 1 sc in next ch) 3 times, joining A in last sc. With A, 1 sc in next ch. (Ch 1. Skip next ch. 1 sc in next ch) 5 times, joining C in last sc.\* With C, 1 sc in next ch. (Ch 1. Skip next ch. 1 sc in next ch) 6 times, joining A in last sc. With A, 1 sc in next ch. (Ch 1. Skip next ch. 1 sc in next ch) 5 times, joining B in last sc. Rep from \* to \* once more. **Do not** join C at end of row. 71 sts. Turn.

## MATERIALS

**Patons® Shetland Chunky™** (Solids: 3.5 oz/100 g; 148 yds/136 m)

**Contrast A** Gold (78605)

**5 balls**

**Contrast B** Aran (78008)

**5 balls**

**Patons® Shetland Chunky™ Tweeds** (3 oz/85 g; 125 yds/114 m)

**Contrast C** Charcoal Tweed (67042)

**3 balls**

**Contrast D** Pewter Tweed (67044)

**2 balls**

Size U.S. K/10½ (6.5 mm) crochet hook **or size needed to obtain gauge.**

**2nd row:** With A, ch 1. 1 sc in first sc. (1 sc in next ch-1 sp. Ch 1. Skip next sc) 4 times. 1 sc in next ch-1 sp. 1 sc in next sc, joining B in last sc. \*With B, 1 sc in next sc. (1 sc in next ch-1 sp. Ch 1. Skip next sc) twice. 1 sc in next ch-1 sp. 1 sc in next sc, joining A in last sc. With A, 1 sc in next sc. (1 sc in next ch-1 sp. Ch 1. Skip next sc) 4 times. 1 sc in next ch-1 sp. 1 sc in next sc, joining C in last sc.\* With C, 1 sc in next sc. (1 sc in next ch-1 sp. Ch 1. Skip next sc) 5 times. 1 sc in next ch-1 sp. 1 sc in next sc, joining A in last sc. With A, 1 sc in next sc. (1 sc in next ch-1 sp. Ch 1. Skip next sc) 4 times. 1 sc in next ch-1 sp. 1 sc in next sc, joining B in last sc. Rep from \* to \* once more. **Do not** join C in last sc. Turn.

**3rd row:** With A, ch 1. 1 sc in first sc. (Ch 1. Skip next sc. 1 sc in next ch-1 sp) 4 times. Ch 1. Skip next sc. 1 sc in next sc, joining B in last sc.

\*With B, 1 sc in next sc. (Ch 1. Skip next sc. 1 sc in next ch-1 sp) twice. Ch 1. Skip next sc. 1 sc in next sc, joining A in last sc. With A, 1 sc in next sc. (Ch 1. Skip next sc. 1 sc in next ch-1 sp) 4 times. Ch 1. Skip next sc. 1 sc in next sc, joining C in last sc.\* With C, 1 sc in next sc. (Ch 1. Skip next sc. 1 sc in next ch-1 sp) 5 times. Ch 1. Skip next sc. 1 sc in next sc, joining A in last sc. With A, 1 sc in next sc. (Ch 1. Skip next sc. 1 sc in next ch-1 sp) 4 times. Ch 1. Skip next sc. 1 sc in next sc, joining B in last sc. Rep from \* to \* once more. **Do not** join C in last sc. Turn.

**4th row:** As 2nd row.

**5th to 10th rows:** Rep 3rd and 4th rows 3 times more, joining B in last sc of 10th row.

**11th row:** (RS). With B, ch 1. 1 sc in first sc. (Ch 1. Skip next sc. 1 sc in next ch-1 sp) 4 times. Ch 1. Skip next sc. 1 sc in next sc, joining D in last sc. \*With D, 1 sc in next sc.

(Ch 1. Skip next sc. 1 sc in next ch-1 sp) twice. Ch 1. Skip next sc. 1 sc in next sc, joining B in last sc. With B, 1 sc in next sc. (Ch 1. Skip next sc. 1 sc in next ch-1 sp) 4 times. Ch 1. Skip next sc. 1 sc in next sc, joining A in last sc.\* With A, 1 sc in next sc. (Ch 1. Skip next sc. 1 sc in next ch-1 sp) 5 times. Ch 1. Skip next sc. 1 sc in next sc, joining B in last sc. With B, 1 sc in next sc. (Ch 1. Skip next sc. 1 sc in next ch-1 sp) 4 times. Ch 1. Skip next sc. 1 sc in next sc, joining D in last sc. Rep from \* to \* once more. **Do not** join A in last sc. Turn.

**12th row:** With B, ch 1. 1 sc in first sc. (1 sc in next ch-1 sp. Ch 1. Skip next sc) 4 times. 1 sc in next ch-1 sp. 1 sc in next sc, joining D in last sc. \*With D, 1 sc in next sc. (1 sc in next ch-1 sp. Ch 1. Skip next sc) twice. 1 sc in next ch-1 sp. 1 sc in next sc, joining B in last sc. With B, 1 sc in next sc. (1 sc in next ch-1 sp. Ch 1.

Skip next sc) 4 times. 1 sc in next ch-1 sp. 1 sc in next sc, joining A in last sc.\* With A, 1 sc in next sc. (1 sc in next ch-1 sp. Ch 1. Skip next sc) 5 times. 1 sc in next ch-1 sp. 1 sc in next sc, joining B in last sc. With B, 1 sc in next sc. (1 sc in next ch-1 sp. Ch 1. Skip next sc) 4 times. 1 sc in next ch-1 sp. 1 sc in next sc, joining D in last sc. Rep from \* to \* once more. **Do not** join A in last sc. Turn.

**13th and 14th rows:** As 11th and 12th rows, joining C at end of 14th row. Leave A, B and D yarn in position.

**15th row:** (RS). With C, ch 1. 1 sc in first sc. (Ch 1. Skip next sc. 1 sc in next ch-1 sp) 4 times. Ch 1. Skip next sc. \*1 sc in each of next 2 sc. (Ch 1. Skip next sc. 1 sc in next ch-1 sp) twice. Ch 1. Skip next sc. 1 sc in each of next 2 sc. (Ch 1. Skip next sc. 1 sc in next ch-1 sp) 4 times. Ch 1. Skip next sc.\* 1 sc in each of

next 2 sc. (Ch 1. Skip next sc. 1 sc in next ch-1 sp) 5 times. Ch 1. Skip next sc. 1 sc in each of next 2 sc. (Ch 1. Skip next sc. 1 sc in next ch-1 sp) 4 times. Ch 1. Skip next sc. Rep from \* to \* once more. 1 sc in last sc. Fasten off. **Do not** turn.

**16th row:** (RS). As 12th row.

**17th row:** As 11th row.

**18th and 19th rows:** As 12th and 11th rows, joining C at end of 19th row. Leave A, B and D yarn in position.

**20th row:** (RS). With C, ch 1. 1 sc in first sc. \*(1 sc in next ch-1 sp. Ch 1. Skip next sc) 4 times. 1 sc in next ch-1 sp. 1 sc in each of next 2 sc. (1 sc in next ch-1 sp. Ch 1. Skip next sc) twice. 1 sc in next ch-1 sp. 1 sc in each of next 2 sc. (1 sc in next ch-1 sp. Ch 1. Skip next sc) 4 times. 1 sc in next ch-1 sp. \* 1 sc in each of next 2 sc. (1 sc in next ch-1 sp. Ch 1. Skip next sc) 5 times. 1 sc in next ch-1 sp. 1 sc in each of next

2 sc. Rep from \* to \* once more. 1 sc in last sc. Fasten off. **Do not** turn.

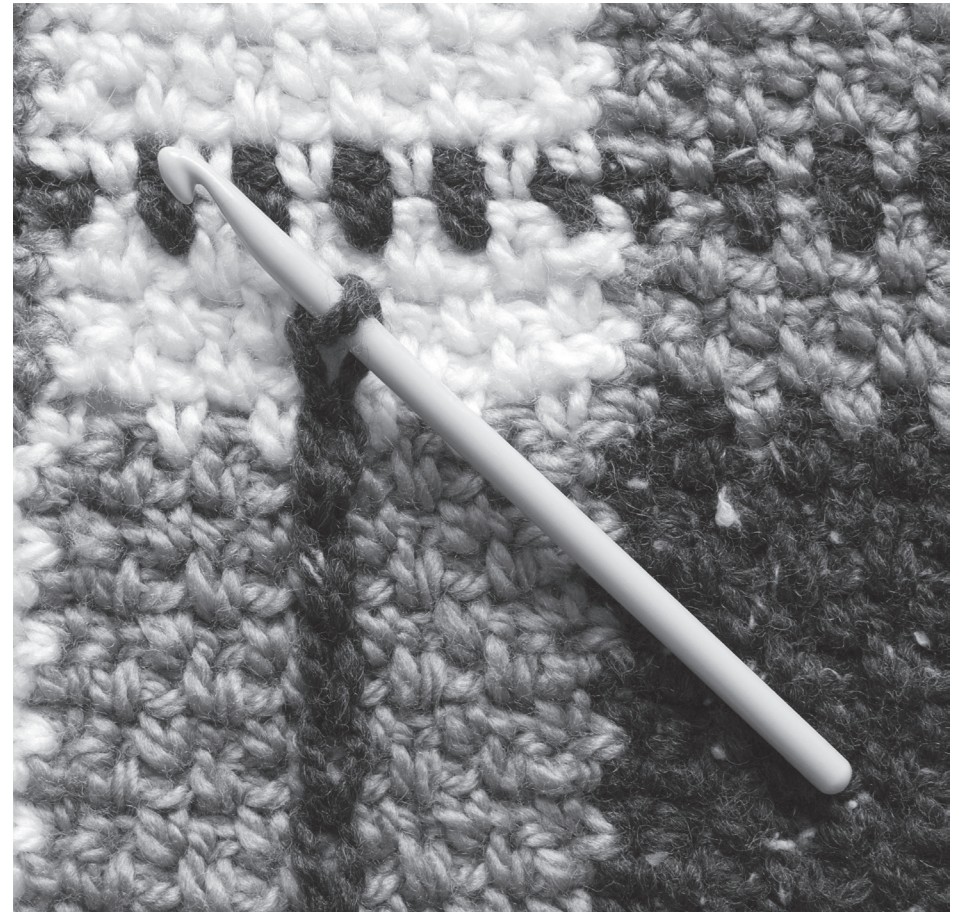
**21st to 24th rows:** As 11th and 12th rows twice more, joining A at end of 24th row.

**25th row:** As 3rd row.

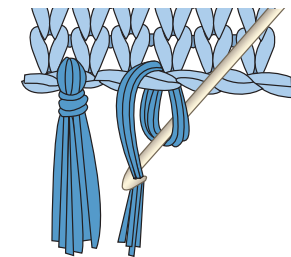
Rep 2nd to 25th rows for Tartan Pat until work from beg measures approx 93" [236 cm], ending on a 10th row of pat. Fasten off.

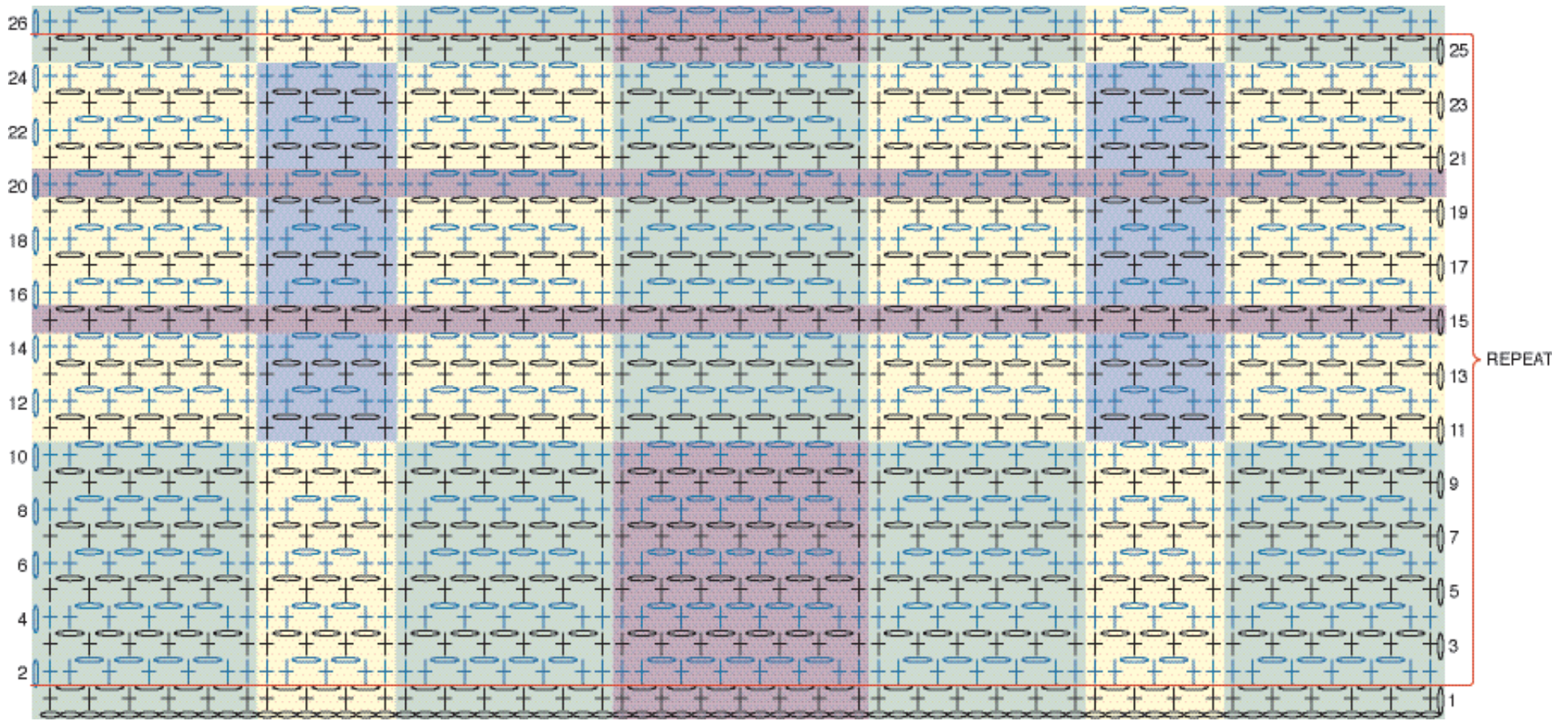
### Vertical Surface Sl St Lines:

With RS facing, join C with sl st to center ch-1 sp at foundation row of C section. Keeping yarn at back (WS) of work, sl st into each ch-1 sp in alternate rows above joining sp to create a straight vertical line of surface sl sts to opposite end of Scarf, taking care to sl st loosely to avoid pulling in work as you stitch. Fasten off. Rep Vertical Sl St Line in both D sections as shown in photo.



**Fringe:** Cut lengths of A, B and C 20" [51 cm] long. Taking 4 strands tog, match fringe to color in pat at each end of Scarf. Trim fringe evenly.





**COLOR KEY**

- = Color A
- = Color B
- = Color C
- = Color D

**STITCH KEY**

- = chain (ch)
- = single crochet (sc)