



MATERIALS

Patons® Kroy Socks FX (1.75 oz/50 g; 166 yds/152 m)
Celestial Colors (57330) **21 balls**

Size U.S. D/3 (3.25 mm) crochet hook **or size needed to obtain gauge.**

ABBREVIATIONS:

Approx = Approximate(ly)

Beg = Begin(ning)

Bobble = [Yoh twice and draw up a loop. (Yoh and draw through 2 loops on hook) twice] 3 times in indicated st. Yoh and draw through all loops on hook.

Ch = Chain(s)

Cluster = *Yoh and draw up a loop in next st. Yoh and draw through 2 loops on hook.* Skip next st. Rep from * to *.

Dc = Double crochet

Dc2tog = (Yoh and draw up a loop in next st. Yoh and draw through 2 loops on hook) twice. Yoh and draw through rem loops on hook.

Pat = Pattern

Rem = Remain(ing)(s)

Rep = Repeat

RS = Right side

Sc = Single crochet

Sl st = Slip stitch

Sp = Space(s)

St(s) = Stitch(es)

Tr = Treble crochet

Yoh = Yarn over hook

 CROCHET | SKILL LEVEL: INTERMEDIATE

MEASUREMENT

Approx 55" [134.5 cm] square.

GAUGE

22 sts and 11 rows = 4" [10 cm] in pat.

INSTRUCTIONS

Note: Ch 3 at beg of rows counts as dc.

Ch 291. See diagram on page 2.

1st row: (RS). 1 dc in 4th ch from hook. 1 dc in each of next 6 ch. 3 dc in next ch. 1 dc in each of

next 6 ch. *Cluster over next 3 ch. 1 dc in each of next 6 ch. 3 dc in next ch. 1 dc in each of next 6 ch. Rep from * to last 2 ch. Dc2tog. Turn.

2nd row: Ch 1. 1 sc in each st to last dc. Skip next dc. 1 sc in top of ch 3. Turn.

3rd row: Ch 4. 1 tr in first sc (half bobble made). Ch 2. Bobble into same sc as half bobble. Ch 4. Skip next 7 sc. 1 sc in next sc. *Ch 4. Skip next 7 sc. (Bobble. Ch 2. Bobble. Ch 2. Bobble) all in next sc. Ch 4. Skip next 7 sc. 1 sc in next sc. Rep

from * to last 8 sc. Ch 4. (Bobble. Ch 2. [Yoh twice and draw up a loop in st. Yoh and draw through 2 loops twice.] 2 times. Yoh and draw through rem loops on hook. (half bobble made) all in last sc. Turn.

4th row: Ch 3. 1 dc in top of first half bobble. 2 dc in next ch-2 sp. 1 dc in top of next Bobble. 3 dc in next ch-4 sp. Cluster over ch-4 sp, sc, ch-4 sp. 3 dc in ch-4 sp. *1 dc in top of next Bobble. 2 dc in next ch-2 sp. 3 dc in top of next Bobble. 2 dc in next ch-2 sp. 1 dc in top of next Bobble. 3 dc in next ch-4 sp. Cluster over ch-4 sp, sc, ch-4 sp. 3 dc in ch-4 sp. Rep from * to last Bobble. 1 dc in top of last Bobble. 2 dc in next ch-2 sp. 2 dc in top of Half Bobble. Turn.

5th row: Ch 1. 1 sc in each st to end of row. Turn.

6th row: Ch 1. 1 sc in first sc. *Ch 4. Skip next 7 sc. (Bobble. Ch 2. Bobble. Ch 2. Bobble) all in next sc. Ch 4. Skip next 7 sc. 1 sc in next sc. Rep from * to end of row. Turn.

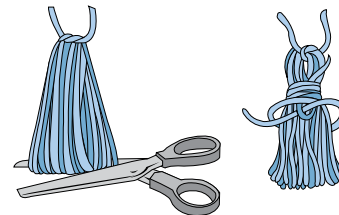
7th row: Ch 3. 4 dc in next ch-4 sp. 1 dc into top of next Bobble. 2 dc in next ch-2 sp. 3 dc in top of next Bobble. 2 dc in next ch-2 sp. 1 dc in top of next Bobble. *3

dc in next ch-4 sp. Cluster over ch-4 sp, sc, ch-4 sp. 3 dc in ch-4 sp. 1 dc in top of next Bobble. 2 dc in next ch-2 sp. 3 dc in top of next Bobble. 2 dc in next ch-2 sp. 1 dc in top of next Bobble. Rep from * to last ch-4 sp. 3 dc in next ch-4 sp. Dc2tog over ch-4 sp and last sc. Turn.

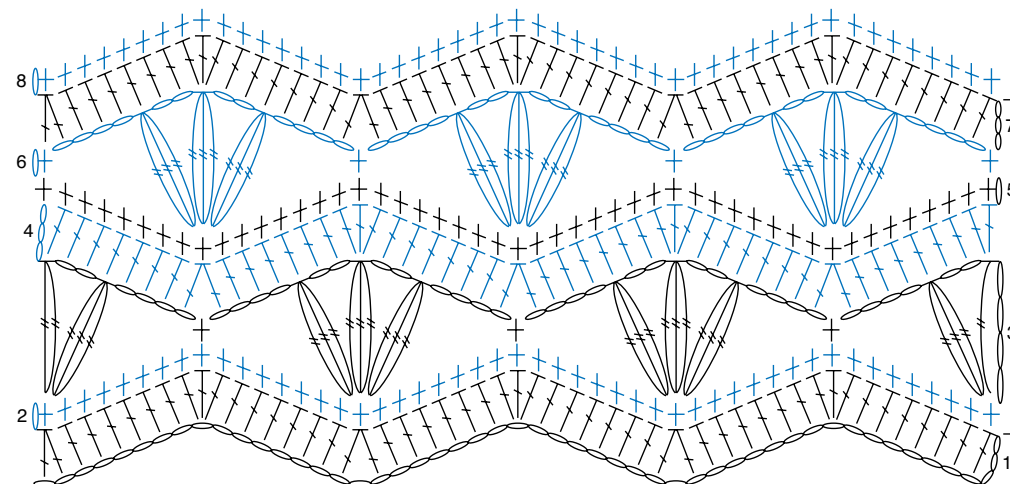
Rep 2nd to 7th rows for pat until work from beg measures approx 55" [139.5 cm], ending on a 5th row. Fasten off.

Side edging: With RS facing, join yarn with sl st to bottom right corner. Ch 1. Work 1 row of sc evenly up side of Shawl. Fasten off. Rep for other side.

Tassels (make 4) Cut a piece of cardboard 3½" [9 cm] wide. Wind yarn around cardboard 50 times. Break yarn leaving a long end and thread end through needle. Slip needle through all loops and tie tightly. Remove cardboard and wind yarn tightly around loops 1" [2.5 cm] below fold. Fasten securely. Cut through rem loops and trim ends evenly. Sew 1 Tassel to each corner of Shawl.



- STITCH KEY
- = chain (ch)
 - = single crochet (sc)
 - = double crochet (dc)
 - = treble crochet (tr)
 - = double crochet 2 together (dc2tog)
 - = cluster
 - = half bobble
 - = Bobble



REDUCED SAMPLE OF PATTERN



REPEAT