



Night Fury Dragon (and Light Fury)

Crochet pattern No 1903



Kamila 'Krawka' Krawczyk



Distribution, translation, publication and resale of these instructions and images are prohibited. Please respect my rights as a designer. If you have any questions email me: krawka.blog@gmail.com I will try to respond ASAP. You can also visit my blog: krawka.blogspot.com, where you will find other great patterns.

1

Thank you very much and happy crocheting! :)



Introduction

I would like to thank you, for choosing to purchase this pattern. I hope that you will be fully satisfied with it and, above all, that the effect of your work will be exactly as you imagined.

I wanted to make a dragon for such a long time, and is there a better dragon than Toothless – Night Fury and his lovely girlfriend? I saw the screenshots from ‘How to train your dragon 3’ on the internet and simply couldn’t resist making them both. Both dragons black and white are almost the same, they are 43 cm (16.9 inches) long. In this pattern I will make a black dragon, but on the last two pages I will tell how to make a white one and what parts you should add.

If you would like to sign up for my newsletter with the newest crochet patterns, discounts and much, much more click here: <https://forms.aweber.com/form/78/1142518878.htm>



Distribution, translation, publication and resale of these instructions and images are prohibited. Please respect my rights as a designer. If you have any questions email me: krawka.blog@gmail.com I will try to respond ASAP. You can also visit my blog: krawka.blogspot.com, where you will find other great patterns.

2

Thank you very much and happy crocheting! :)

★ Materials

List of all the materials you will need for this project:

- yarn (I use 55% cotton yarn which measures 174 yards (159 meters) for 50 g, weight Sport / 5 ply (12 wpi), Gauge 24 to 30 st is 4 inches (10 cm)
You can use any colors you like , but here is the list of colors I used:

If you want to make black dragon you will need:

- dark grey – base color – You can use black if you want, I used a very dark grey yarn for the purposes of this pattern (black stitches are almost invisible on photos)
- lime green – eyes
- black – pupils
- pink – inside mouth

If you want to make white dragon you will need:

- white – base color
- blue – eyes
- black – pupils, eyebrows
- light grey – nails
- pink – inside mouth

If you want to know more about the yarns or colors I chose, send me an email.

- 3,5 mm (D) hook,
- small piece of white felt for pupils
- cotton wool or other stuffing
- needle, thread, pins, scissors, etc.





Abbreviations

sc	Single crochet
ch	Chain
ss	Slip stitch
hdc	Half double crochet
dc	Double crochet
BLO	Back loops only in this row.
FLO	Front loops only in this row.
inc	Increase
dec	Decrease
2hdcin1	Make 2 half double crochet in 1
3scin1	Make 3 single crochet in 1
IncDC	Make 2 double crochet in 1 (Increase DC)
MR	Magic ring
FO	Fasten off
*...*X3	Instructions between stars make 3 times
R1	Row 1
(12)	12 is number of stitches after making this row

Distribution, translation, publication and resale of these instructions and images are prohibited. Please respect my rights as a designer. If you have any questions email me: krawka.blog@gmail.com I will try to respond ASAP. You can also visit my blog: krawka.blogspot.com, where you will find other great patterns.

★ Pattern

In this pattern I will make a black dragon, but at the end I will tell how to make a white one and what parts you should add.

Head (Make 1)

dark grey yarn

R1: ch 10 (10)

R2: sc 9 on one side of chain, sc 9 on other (18)

R3: inc, sc 3, inc, sc 3, inc 2, sc 3, inc, sc 3, inc (24)

R4: * sc 3, inc * X6 (30)

R5: * sc 4, inc * X6 (36)

R6: * sc 5, inc * X6 (42)

R7: sc around (42)

R8: * sc 6, inc * X6 (48)

R9: sc around (48)

R10: * sc 7, inc * X6 (54)

R11 – R17: sc around (54)

R18: * sc 7, dec * X6 (48)

R19 – R20: sc around (48)

R21: * sc 6, dec * X6 (42)

R23: * sc 5, dec * X6 (36)

R24: * sc 4, dec * X6 (30)

STUFF

R25: sc around (30)

R26: * sc 3, dec * X6 (24)

(continued on next page)



R27: sc around (24)

STUFF some more

R28: * sc 2, dec * X6 (18)

R29: * sc, dec * X6 (12)

R30: dec around (6)

R31: skip 1, sc, skip 1, ss FO

Body (Make 1)

dark grey yarn

R1: sc 6 in MR (6)

R2: * 3scin1, inc, sc * X2 (12)

R3: sc 2, inc 3, sc 3, inc 3, sc (18)

R4: sc 3, inc 3, sc 6, inc 3, sc 3 (24)

R5: sc 5, inc 3, sc 9, inc 3, sc 4 (30)

R6: * sc 4, inc * X6 (36)

R7: * sc 5, inc * X6 (42)

R8: * sc 6, inc * X6 (48)

R9: sc around (48)

R10: * sc 7, inc * X6 (54)

R11: sc around (54)

R12: * sc 8, inc * X6 (60)

R13 – R18: sc around (60)

R19: * sc 8, dec * X6 (54)

R20: sc around (54)

R21: * sc 7, dec * X6 (48)

R22: sc around (48)

(continued on next page)



R23: * sc 6, dec * X6 (42)

R24: sc around (42)

R25: * sc 5, dec * X6 (36)

R26-R29: sc around (36)

R30–R31: sc around (36)

R31: sc around (36) FO



Ear (Make 2)

dark grey yarn

R1: 6 sc in MR (6)

R2: sc 6 (6)

R3: * inc, sc 2 * X2 (8)

R4: * inc, sc 3 * X2 (10)

R5: * inc, sc 4 * X2 (12)

R6: * inc, sc 5 * X2 (14)

R7 – R8: sc around (14)

R9: * dec, sc 5 * X2 (12)

R10: sc around (12)

R11: sc 11, ss (12) FO



Head spine (Make 4)

dark grey yarn

R1: 6 sc in MR (6)

R2 –R3: sc around (6)

R4: inc, sc 2, inc, sc, ss (8) FO



Eye (Make 2)

lime green yarn

R1: 7 sc in MR (7)

R2: inc around (14)

R3: sc, inc 2, ch, dc, ch, sc, inc, sc, inc, sc, inc, ch, dc, ch, sc 2, ss FO



Pupil (Make 2)

black yarn

R1: 4 ch (4)

R2: sc 3 on one side of chain, sc 3 on other (6)

R3: inc, sc, inc 2, sc, ss (9) FO



From white felt cut two small circles for light reflections

(see the photo for reference)



Upper mouth (Make 1)

dark grey yarn

R1: 6 sc in MR (6)

R2: * 3scin1, inc, sc * X2 (12)

R3: sc, inc 3, sc 3, inc 3, sc 2 (18)

R4: sc 3, inc 3, sc 6, inc 3, sc 3 (24)

R5: sc 4, inc 3, sc 9, inc 3, sc 5 (30)

R6: sc 29, ss (30) FO



Lower mouth (Make 1)

dark grey yarn

R1: 7 ch (7)

R2: sc 6 on one side of chain, sc 6 on other (12)

R3: * inc, sc 5 * X2 (14)

R4: * inc, sc 6 * X2 (16)

R5: * inc, sc 7 * X2 (18)

R6: * inc, sc 8 * X2 (20)

R7: sc, inc, sc 9, inc, sc 7, ss (22) FO



Inside mouth (Make 1)

light pink yarn

TURN after each row here

R1: 6 ch (6)

R2: sc 6 (6)

R3: * inc, sc 2 * X2 (8)

R4: sc 3, inc, sc 4 (9)

R5: sc 3, inc 2, sc 4 (11)

R6: sc 4, inc 2, sc 4, ss (13) FO



Arm (Make 2)

dark grey yarn

R1: ch 5 (5)

R2: sc 4 on one side, sc 4 on other (8)

R3: inc, sc 2, inc 2, sc 2, inc (12)

R4: inc 2, sc 3, inc 3, sc 3, inc (18)

R5: * sc 2, inc * X6 (24)

(continued on next page)



R6: * sc 3, inc * X6 (30)

R7-R9: sc around (30)

R10: * sc 3, dec * X6 (24)

R11-R12: sc around (24)

R13: * sc 2, dec * X6 (18)

R14-R21: sc around (18)

R22: sc around (18) FO



Nails/Back spines (Make 17 - 12 as nails, 5 as back spines)

dark grey yarn

R1: 6 sc in MR (6)

R2 -R3: sc around (6)

R4: dec, sc, dec, sc (4)

R5: skip 1, sc FO

tie both loose ends of yarn and cut off the rest.



Leg (Make 2)

dark grey yarn

R1: 6 sc in MR (6)

R2: * 3scin1, inc, sc * X2 (12)

R3: sc, inc 3, sc 3, inc 3, sc 2 (18)

R4: sc 3, inc 3, sc 6, inc 3, sc 2, ss (24)

R5: BLO sc around (24)

R6 -R9: sc around (24)

R10: * sc 6, dec * X3 (21)

(continued on next page)



R11 –R12: sc around (21)

R13: * sc 5, dec * X3 (18)

R14 -R15: sc around (18)

R16: * inc, sc 2 * X5, inc, sc, ss (24) FO



Tail (Make 1)

dark grey yarn

R1: 6 sc in MR (6)

R2 – R5: sc around (6)

R6: inc, sc 5 (7)

R7 – R9: sc 7 (7)

R10: inc, sc 6 (8)

R11 – R12: sc around (8)

R13: inc, sc 7 (9)

R14 – R15: sc around (9)

R16: inc, sc 8 (10)

STUFF a bit along the way

R17 – R18: sc around (10)

R19: inc, sc 9 (11)

R20: sc around (11)

R21: inc, sc 10 (12)

R22: sc around (12)

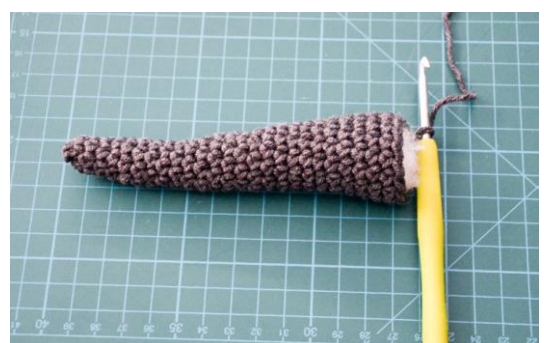
R23: inc, sc 11 (13)

R24: inc, sc 12 (14)

R25: inc, sc 13 (15)

R26: inc, sc 14 (16)

(continued on next page)



R27: inc, sc 15 (17)

R28: inc, sc 16 (18)

R29: sc around (18)

R30: inc, sc 17 (19)

R31 – R32: sc around (19)

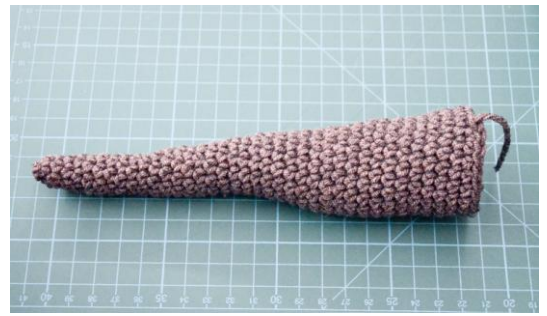
R33: inc, sc 18 (20)

R34 – R35: sc around (20)

R36: inc, sc 19 (21)

R37: sc around (21)

R38: * inc, sc 6 * X2, inc, sc 5, ss (24) FO



End of tail (Make 2)

dark grey yarn

R1: 6 sc in MR (6)

R2 – R3: sc around (6)

R4: * inc, sc 2 * X2 (8)

R5: sc around (8)

R6: * inc, sc 3 * X2 (10)

R7: dec, sc 3, inc 2, sc 3 (11)

R8: dec, sc 4, inc, sc 3, ss (11) FO



Wing base (Make 2)

dark grey yarn

R1: 6 sc in MR (6)

R2: sc 6 (6)

R3: * inc, sc 2 * X2 (8)

(continued on next page)



R4: * inc, sc 3 * X2 (10)

R5: * inc, sc 4 * X2 (12)

R6: * inc, sc 5 * X2 (14)

R7: sc 7, inc, sc 6 (15)

R8: sc 7, inc, sc 7 (16)

R9: sc 8, inc, sc 7 (17)

R10: sc 8, inc, sc 8 (18)

R11: sc 9, inc, sc 8 (19)

R12: sc 9, inc, sc 9 (20)

R13: sc 11, inc, sc 9 (22)

R14: sc 12, inc, sc 9 (23)

R15: sc 13, inc, sc 9 (24)

R16: sc 13, inc, sc 10 (25)

R17: sc around (25)

R18: sc 13, dec, sc 10 (24)

R19: sc 13, dec, sc 9 (23)

R20: sc 12, dec, sc 9 (22)

R21: sc 12, dec, sc 8 (21)

R22: sc 12, dec, sc 7 (20)

R23: sc 12, dec, sc 6 (19)

R24: sc 12, dec, sc 5 (18)

R25: sc 12, dec, sc 4 (17)

R26: sc 12, dec, sc 3 (16)

R27: sc 11, dec, sc 3 (15)

R28: sc 11, dec, sc 2 (14)

R29: sc 11, dec, sc (13)

R30: sc around (13)

R31: sc 12, ss (13) FO



Wing (Make 4)

dark grey yarn

R1: 6 sc in MR (6)

R2: sc 6 (6)

R3: * inc, sc 2 * X2 (8)

R4: sc 3, inc, sc 4 (9)

R5: sc 3, inc 2, sc 4 (11)

R6: sc 4, inc 2, sc 4, ss (13) FO



We have all the parts we need now.

Let's sew them together.

We will make the head first.

Stuff the upper mouth



Sew the upper mouth to the head (the side where you started making the head), a little below the middle

(see the photo for reference)



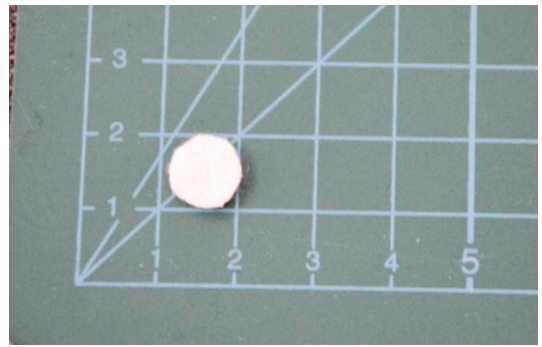
Side view of the head with the upper mouth.



From the white felt cut two circles for light reflections, if you haven't done it before.

My circles are almost 1 cm diameter.

(see the photos for reference)



Sew the reflections to the upper part of the pupils.



Sew pupils to the eyes

(see the photo for reference on how to place them)



Sew eyes to the head, right above the upper mouth.



Side view of the head for now.



Sew the inside mouth to the lower mouth.



Sew the lower mouth below the upper one, the way it doesn't stick out the upper mouth.

(see the photo for reference, it's the view from below)



Side view



Front view.



Take the first pair of head spines, stuff them a little bit.

Sew the spines on top of the head, remembering that they are facing backwards - see the photo on next page for reference.



Head spines from the side.



Stuff the ears lightly.



Sew ears to the head next to the spines....



... direct them backwards too.



Stuff the last pair of head spines now.

Sew the head spines on the sides of the head,
directing them backwards too.



Finished head.



Stuff the body firmly, but at the end leave a space for the head to put it in.

(see the photo for reference)



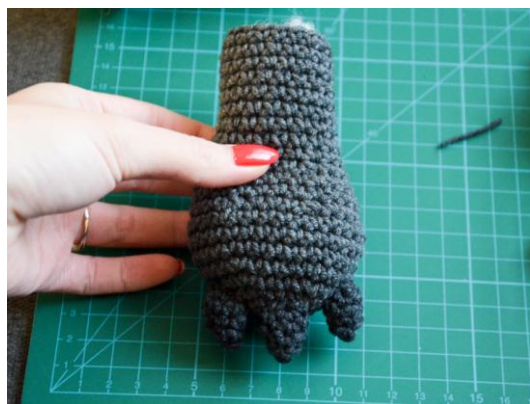
Put the head inside the body and sew around.



Stuff arms.

Sew three nails to each hand.

(see the photo for reference)



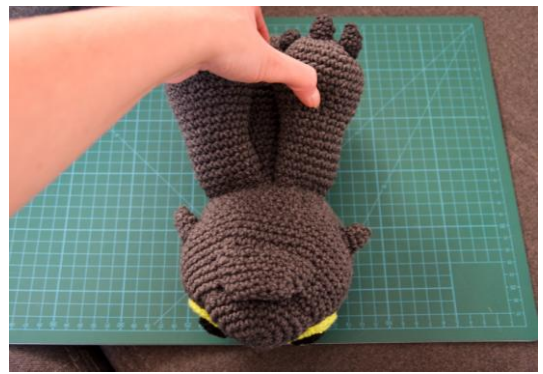
Place and sew both arms near the place where you sew head to the body.

(see the photo for reference)

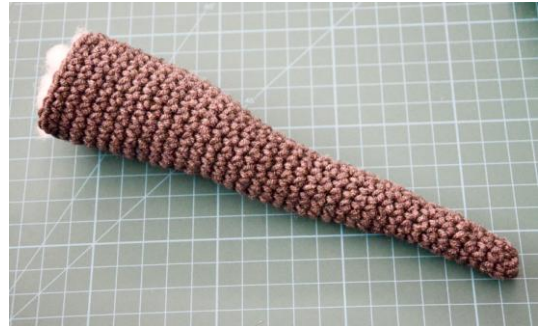


Remember to sew firmly on this side too.

(see the photo for reference)



Stuff the tail.



I didn't stuff the tail end, but you can do it if you fell they are not stiff enough without it – if you do stuff them do it very lightly.



Sew the tail ends to the tail.

(see the photo for reference)



Sew tail to the body.



Stuff the legs.



Sew the first nail to the leg in the middle of the oval
(see the photo for reference)



Sew the other two nails on the sides
(see the photo for reference)



Sew the legs to the body...



...make sure the legs are directed a bit to the front.
(see the photo for reference)



Stuff the wing bases lightly, but make sure the last part (see the photo) is stuffed very firmly.



Now take two wings and place them on the wing base side, stuff them a bit

(see the photo for reference)



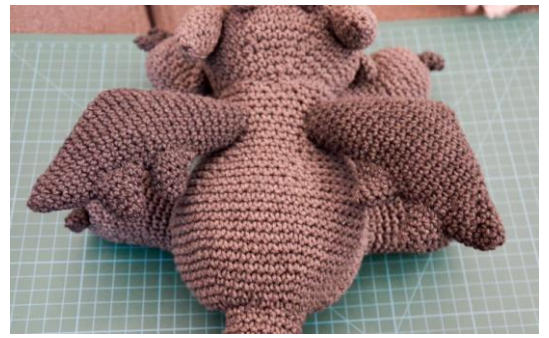
Sew the two wing parts.



Make the other wing same way too.



Sew wings to the body.



Take 5 back spines...



... and sew them in more or less even spaces along the back

(see the photo for reference)



Side view.



Congratulations! Black one is now finished.

If you want to make the white one now turn the page.



Let's make the parts first

Make:

1 white body

1 white head

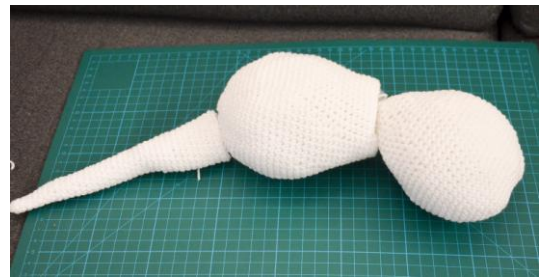
1 white tail base

2 white tail end's

2 white legs

2 white arms

12 light grey nails



5 white back spines



2 white wing bases

4 white wings

2 white ears

4 white head spines

1 white upper mouth

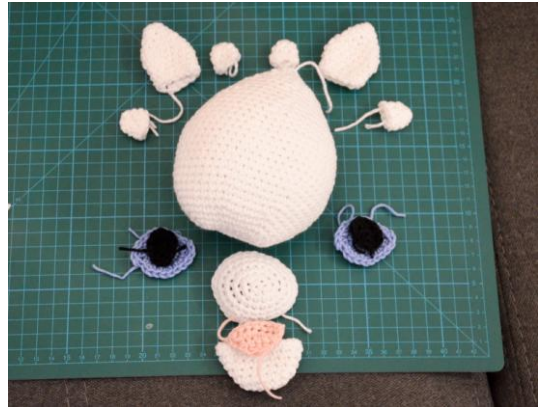
1 white lower mouth

1 light pink inside mouth

2 black pupils

2 blue eyes

The only additional part we will do are the eyebrows:



Eyebrows (Make 2)

black yarn

R1: 10 ch (10) FO

Sew the parts together like you did for the black dragon.

Add the eyebrow right above the eyes start from the pupil, make them curly on the end.

(see the photo for reference)



Congrats! The white dragon is ready.

This is the end of this pattern. I really hope you enjoyed it and that you love the end result.

No matter if you made one dragon or two you should be proud! I know it wasn't easy. **THE END**

