

. Mishka .



Sizes : Newborn/1 (3/6 – 9/12 – 18/24) months

Head sizes approximately 13,5 (14,5 - 16,5 - 18)'' or 34 (37 - 42 - 46) cm.

Gauge : 20 sts x 32 rows for 10 x 10 cm in textured point.

Yarns & Matériaux : Approximately 55 (65 - 88 - 98) yards or 50 (60 - 80 - 90) m of DK yarn.

Needle size n° 3,5 mm/US 4 (rib) and 4 mm/US 6 (beanie), tapestry needle, cable needle. 5 markers can also be useful to separate the different stitches patterns.

Sample are knitted in merinos extra fine of Drops.

« **Mishka** » is proposed in two versions : one version in textured point and another with a set of cables more. The two beanies are knitted from bottom to top seamlessly in circles with a circular needle.

Refer to section « Abréviations, stitches & techniques » before starting.

Version 1 :



Edge :

With smalls needles, Cast on loosely 68 (74 - 84 - 92) sts, join in round (taking care not to twist the work) and place a marker to beginning of the row/round.
Work 1'' or 2,5 cm in 1/1 rib : *k1, p1* until the end of the row. Always repeat this row.

Beanie :

With larges needles work in textured point until 6 (6,75 - 7 - 8)'' or 15 (17 - 18 - 20) cm of total length. (See explications of textured point page 4).

Leave the sts on hold on the circular needle and not cut the yarn.
Return beanie over the right sides facing each other (Divide 34 (37 -42 - 46) sts on each needle) and Bind off using a 3 needles bind-off (See page 4).

Finitions :

Weave in ends and block slightly, taking care not to stretch the egde too much.
Make 2 pompons 3.5 cm in diameter and sew them firmly at each "tip" of the hat.

Version 2 :



Edge :

With small needles, Cast on loosely 78 (86 - 98 - 106) sts, join in round (taking care not to twist the work) and place a marker to beginning of the row/round.

Work 1" or 2,5 cm in 1/1 rib : *k1, p1* until the end of the row. Always repeat this row.

Beanie :

Next row/round with large needles work : 10 (12 -15 - 17) sts in textured point, 19 sts of cables pattern, 20 (24 - 30 - 34) sts in textured point, 19 sts of cables pattern and 10 (12 - 15 - 17) sts in textured point. Work as established until 6 (6,75 - 7 - 8)" or 15 (17 -18 - 20) cm of total length. (See explications of textured point and cable pattern page 4).

Note : *markers can also be useful to separate the different stitches patterns.*

Leave the sts on hold on the circular needle and not cut the yarn.

Return beanie over the right sides facing each other (Divide 39 (43 - 49 - 53) sts on each needle) and Bind off using a 3 needles bind-off (see page 4).

Finitions :

Weave in ends and block slightly, taking care not to stretch the edge too much. Make 2 pompons 3.5 cm in diameter and sew them firmly at each "tip" of the hat.

Abréviations, Points & Techniques :

k knit

p purl

st(s) stitch(es)

Sl slip

CN cable needle

3 needle bind-off : place the 2 pieces you wish to bind off on 2 needles parallel to each other, right sides facing. With a 3rd needle, slide through the first stitch of the front needle and the first stitch on the back needle as if to knit. Knit those 2 stitches together. Do the same thing again, then bind off the first stitch by passing it over the second stitch, etc.

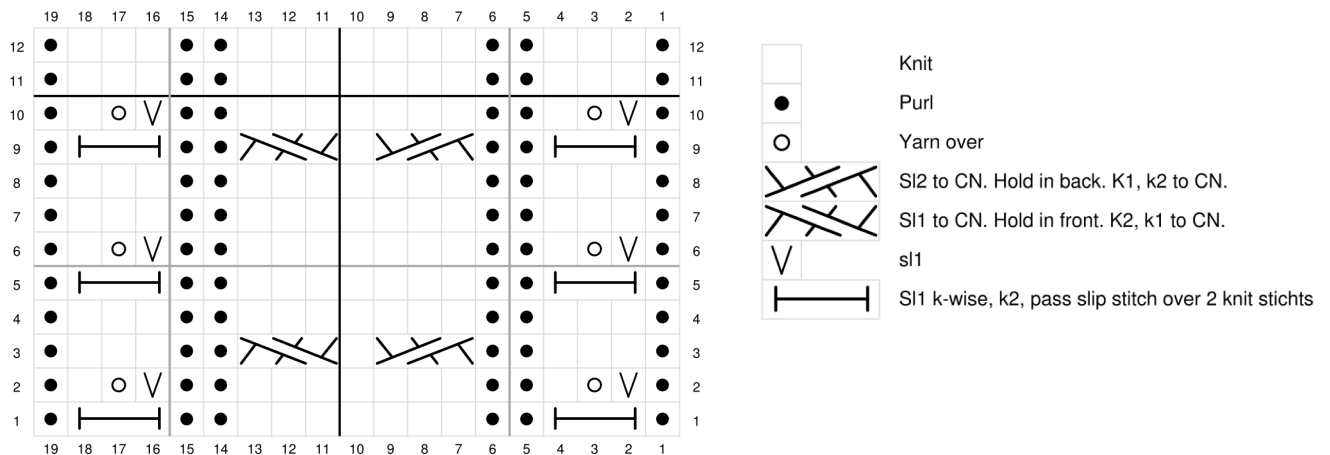
<https://www.youtube.com/watch?v=viXpgyczvH8>

Textured point : Row 1 : *p1, k1*. Repeat * to * until the end of the row.

Rows 2 and 4 : knit all the sts.

Row 3 : *k1, p1*. Repeat * to * until the end of the row.

Cables pattern :



Mentions légales

Ces explications sont réservées à un usage strictement personnel et non-commercial. Il est interdit de copier, diffuser ou de vendre quelque reproduction de ce patron ou des articles réalisés à partir de ces instructions sans l'accord écrit de Emilie L.