

Lupo the bear

a crochet pattern designed by Diminu



Materials

- Yarn (light brown, dark brown, cream and dark red). I used Katia Panama 100% cotton yarn, 50g / 180 m
- 2 mm crochet hook
- Polyester fiberfill
- 4.5 mm plastic safety eyes
- Embroidery thread
- Tapestry needle
- Stitch marker
- Safety nose (optional)



Abbreviations

st = stitch

ch= chain stitch

sc = single crochet

inc = increase (2 sc in one st)

dec = decrease (make 2 st into one st)

BLO = insert the hook in the Back Loop Only

FLO = insert the hook in the Front Loop Only

sl = slip stitch

Notes

- This pattern is written using US crochet terminology.
- If you use the yarn and hook indicated, the bear will be about 13.5 cm (5.3 inches) tall. You can make it bigger or smaller using another type of yarn but, please, adapt the crochet hook and safety eyes accordingly.
- Work in continuous rounds (spiral) unless instructed otherwise in the pattern.

- If you have any questions or comments about the pattern please feel free to contact me at: diminupatterns@gmail.com I will be happy to help.

HEAD

(Start with light brown yarn)

Rnd 1: start 6 sc in a magic ring (6)

Rnd 2: inc in all 6 st (12)

Rnd 3: (1 sc, inc) x 6 (18)

Rnd 4: (2 sc, inc) x 6 (24)

Rnd 5: sc in all 24 st (24)

Rnd 6: (7 sc, inc) x 3 (27)

Continue with dark brown yarn

Rnd 7: sc in all 27 st (27)

Rnd 8: (8 sc, inc) x 3 (30)

Rnd 9: (4 sc, inc) x 6 (36)

Rnd 10: sc in all 36 st (36)

Rnd 11: (5 sc, inc) x 6 (42)

Rnd 12: (6 sc, inc) x 6 (48)

Rnd 13: (7 sc, inc) x 6 (54)

Rnd 14: (8 sc, inc) x 6 (60)

Rnd 15: (9 sc, inc) x 6 (66)

Rnd 16-20: sc in all 66 st (66)



**Place your safety eyes between rounds 11-12 with 16 stitches between them.*

Rnd 21: (9 sc, dec) x 6 (60)

** To make the eyebrows add brown embroidery thread 3 rounds above each eye. See pictures as a reference.*

Rnd 22: (8 sc, dec) x 6 (54)

Rnd 23: (7 sc, dec) x 6 (48)

Rnd 24: (6 sc, dec) x 6 (42)

Rnd 25: (5 sc, dec) x 6 (36)

** Start stuffing the head and continue stuffing as you work.*

Rnd 26: (4 sc, dec) x 6 (30)

Rnd 27: (3 sc, dec) x 6 (24)

Rnd 28: (2 sc, dec) x 6 (18)

Rnd 29: (1 sc, dec) x 6 (12)

Rnd 30: (dec) x 6 (6)

Fasten off leaving a tail for sewing. With your yarn needle, weave the yarn tail through the front loop of each stitch and pull tight to close. Weave in the yarn end.



EARS (make 2)

Inner ear, make 2

(with light brown yarn)

Rnd 1: start 6 sc in a magic ring (6)

Rnd 2: inc in all 6 st (12)

Rnd 3: (1 sc, inc) x 6 (18)

Make a slip stitch in next stitch, fasten off and weave in the yarn end.

Outer ear, make 2

(with dark brown yarn)

Rnd 1: start 6 sc in a magic ring (6)

Rnd 2: inc in all 6 st (12)

Rnd 3: (1 sc, inc) x 6 (18)

Don't fasten off. Now we will crochet the inner and outer ear together.

Rnd 4: Place the backs together and sc in all 18 st around (18)

Make a slip stitch in next stitch and fasten off, leaving a long tail for sewing.



BODY

(in dark brown yarn)

Rnd 1: start 6 sc in a magic ring (6)

Rnd 2: inc in all 6 st (12)

Rnd 3: (1 sc, inc) x 6 (18)

Rnd 4: (2 sc, inc) x 6 (24)

Rnd 5: (3 sc, inc) x 6 (30)

Rnd 6: (4 sc, inc) x 6 (36)

Rnd 7: (5 sc, inc) x 6 (42)

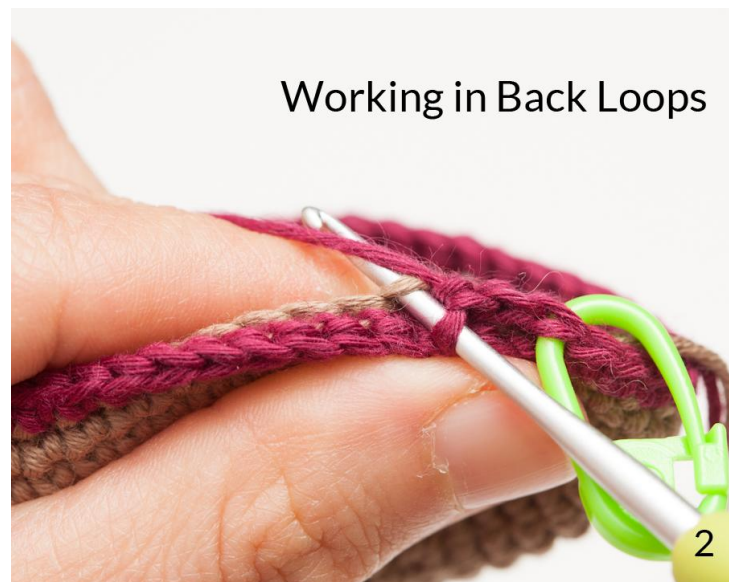
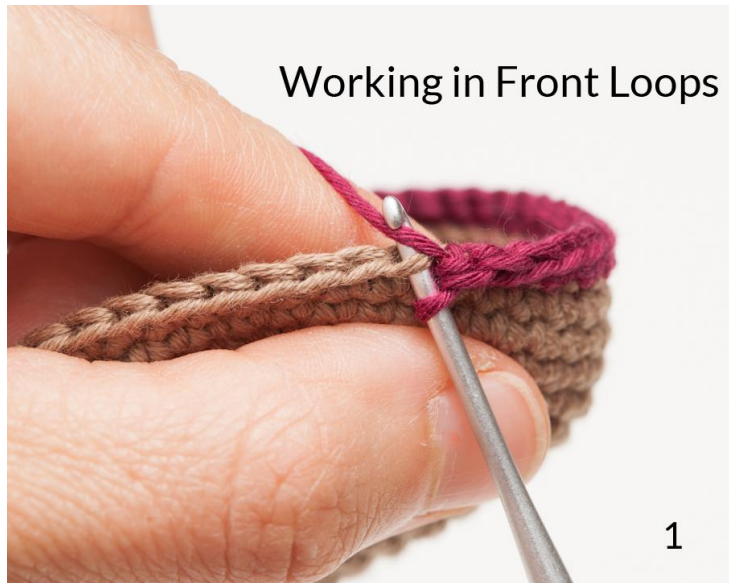
Rnd 8: (6 sc, inc) x 6 (48)

Rnd 9-12: sc in all 48 st (48)

Continue with dark red yarn

Rnd 13: FLO sc in all 48 st (48)(Picture 1)

Rnd 14: BLO sc in all 48 st (48)(Picture 2)



Crochet in the back loops of the same round, where you have crocheted in front loops.

Rnd 15: (6 sc, dec) x 6 (42)

Continue with cream yarn

Rnd 16: sc in all 42 st (42)

Rnd 17: (5 sc, dec) x 6 (36)

In dark red yarn

Rnd 18: sc in all 36 st (36)

Rnd 19: (4 sc, dec) x 6 (30)

In cream yarn

Rnd 20: sc in all 30 st (30)

Rnd 21: (3 sc, dec) x 6 (24)

In dark red yarn

Rnd 22-23: sc in all 24 st (24)

In cream yarn

Rnd 24: sc in all 24 st (24)

Rnd 25: (2 sc, dec) x 6 (18)

In dark red yarn

Rnd 26-27: sc in all 18 st (18)

Make a slip stitch in next stitch and fasten off, leaving a long tail for sewing.



ARMS (make 2)

(Start with brown yarn)

Rnd 1: start 6 sc in a magic ring (6)

Rnd 2: inc in all 6 st (12)

Rnd 3-5: sc in all 12 st (12)

Rnd 6: (1 sc, dec) x 4 (8)

Embroider the claws (3) with light brown yarn.

Rnd 7-16: sc in all 8 st (8)

Stuff only the hand.

in dark red yarn

Rnd 17-18: sc in all 8 st (8)

in cream yarn

Rnd 19: sc in all 8 st (8)

Rnd 22: Flatten the top of the arm and make sc through both layers to close.

Fasten off, leaving a long tail for sewing.



LEGS (make 2)

(Start with light brown yarn)

Rnd 1: start 6 sc in a magic ring (6)

Rnd 2: inc in all 6 st (12)

Rnd 3: (1 sc, inc) x 6 (18)

Change to dark brown yarn

Rnd 4: (2 sc, inc) x 6 (24)

Rnd 5: (3 sc, inc) x 6 (30)

Rnd 6: BLO sc in all 30 st (30)

Rnd 7: (3 sc, dec) x 6 (24)

Rnd 8: sc in all 18 st (24)

Embroider 3 toes with light brown yarn. Start embroidering the middle toe in line with the color change (see the picture as a reference). Then embroider the other two with 3 stitches apart.

Rnd 9: (2 sc, dec) x 6 (18)

Rnd 10: sc in all 18 st (18)

Rnd 11: (1 sc, dec) x 6 (12)

Rnd 12-19: sc in all 12 st (12)

Stuff only half of the leg.



Rnd 20: Flatten the top of the leg and make sc through both layers to close.

Fasten off, leaving a long tail for sewing.



TAIL

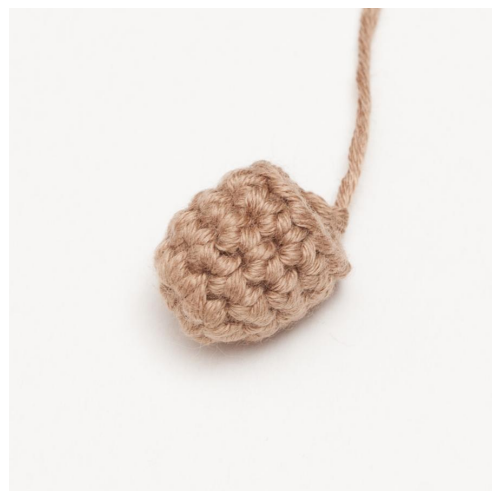
(With dark brown yarn)

Rnd 1: start 6 sc in a magic ring (6)

Rnd 2: inc in all 6 st (12)

Rnd 3-5: sc in all 12 st (12)

Make a slip stitch in next stitch and fasten off, leaving a long tail for sewing. Stuff with fiberfill.



Assembly

Now we will join all parts together to finish the little bear.



- Pin the ears to the head in round 15 from the color transition (cream part) leaving around 16 stitches between them and sew them to the head.



- Place the body centered under the head with pins. Position it 9 rows below the color transition. Use the pictures as a reference. You will sew the head to the body with 18 stitches, one for each single crochet



- Sew the arms to both sides of the body 3 rows below the head.



- Pin the legs to the body with the color transition pointing downwards (as shown in the photos) and sew them to the body.



- Sew the tail centered to the body between rounds 2-6. Use the picture as a reference.



Congratulations!! Your little bear is ready!

I would love to see your finished bear so don't forget to follow me on Instagram [@diminu_patterns](https://www.instagram.com/diminu_patterns) and share your photo tagging me. Thank you!



This pattern is for personal use only. You are not allowed to share, publish, resell, distribute or rewrite this pattern in any way.

You may sell the finished product made with this pattern but, please, credit the designer Diminu and include a link to the pattern.

If you have any questions or comments about the pattern please feel free to contact me at: diminupatterns@gmail.com I will be happy to help :)

Thanks!!

Aintzi.

