



Crochet Pattern

By Olga Borisenko

Skill level: Easy



Useful monsters: Grumble, Cleanfreak and Grubby

About this pattern

The toy is crocheted in continuous spirals without joining the rounds. You will need a stitch marker to keep track of where the beginning of each round starts. Move the marker up to the first stitch of the next round after finishing the previous one.

If you don't have a stitch marker you can always use a scrap of contrasting yarn instead. You can see it in my photos.

Do not remove the marker until the toy is almost finished unless otherwise stated.

I use USA terminology for my pattern (don't worry if you use UK terms, all the differences are explained in the pattern).

Finished size

Finished size approx. 15 cm (5.9 inches) using the materials stated in the pattern.

*Happy
crocheting!*

Materials and tools

Yarn:

- main yarn for the body – **any** color. I used “Baby Softy” by Alize (100% polyester, 50g/115m);

Tip: I recommend that you use a fluffy yarn (chenille, velour, etc). The thicker the yarn, the bigger your toy will be. Make sure the yarn you use is soft. If you use a yarn that is too stiff, it will be hard to shape the toy nicely.

- yarn for the eyes and the teeth – smooth **white** color yarn. I used “Cotton Soft” by YarnArt (55% cotton, 45% acrylic, 600m/100g) – this yarn should be approximately five times thinner than the yarn for the body;

You can buy this yarn as a set here:

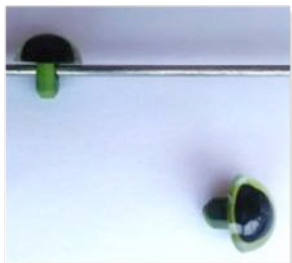
<https://www.etsy.com/shop/LittleOwlsHutRUSSIAN>



Note: Go to gauge section (page 2) to check if you chose the correct yarn.



- ✓ Matching crochet hooks (I used 1.00 mm for the smooth yarn and 3.0 mm for the fluffy yarn);
- ✓ Two ready-made eyes on loops – I used 9 mm in diameter.



- ✓ Any stuffing.
- ✓ Bamboo or plastic ring for Cleanfreak – I used 17 cm in diameter.
- ✓ Wooden stick for Grubby – I used 1.0-1.5 cm in diameter.
- ✓ A big bead with big hole (mine is 1.0-1.5 cm in diameter) to secure the hanging loop inside the toy's head.
- ✓ Sewing needle and tapestry needle.
- ✓ Wooden stick for stuffing hard-to-get places.
- ✓ Any material for tinting – I used eyeshadow.
- ✓ Strong thread for needle sculpting.
- ✓ Sewing thread of matching colors to sew the pieces together.

Note: I don't leave tails at the end of the pieces because I sew them using sewing threads of matching colors. You can leave tails if you want when you fasten off and use them to sew the pieces.

Gauge **IT IS VERY IMPORTANT!**

To make sure that you have chosen the right yarns crochet 2 swatches first.

First: Work first swatch using smooth yarn and matching hook (use smaller hook than suggested on the yarn label). Crochet tight.

Second: Work second swatch using your main yarn and matching hook (use smaller hook than suggested

on the yarn label). Do not crochet tight.

Instruction for both swatches:

Rnd 1: 6 sc in a magic ring = 6 sts

Rnd 2: 6 inc = 12 sts

Rnd 3: (1 sc, 1 inc) x 6 = 18 sts

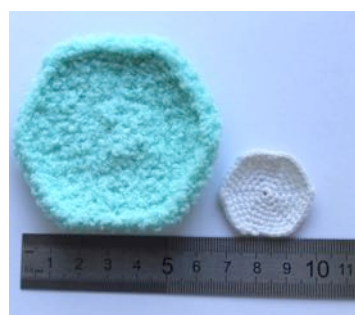
Rnd 4: (2 sc, 1 inc) x 6 = 24 sts

Rnd 5: (3 sc, 1 inc) x 6 = 30 sts

Rnd 6: (4 sc, 1 inc) x 6 = 36 sts

Rnd 7: (5 sc, 1 inc) x 6 = 42 sts

Compare your swatches. Small swatch should be approximately five times smaller than the big one.

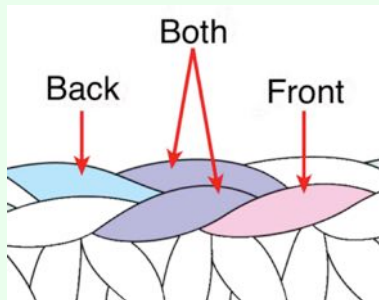


If not, take a bigger hook than you used before and work another swatch using your main yarn or you may try to crochet the small swatch tighter using smaller hook or thinner yarn. If it does not help – choose different yarn and make other swatches.

Note: All three bathroom keepers (Grumble, Cleanfreak and Grubby) are crocheted the same way. However, they are assembled differently. All the instructions are given in the pattern.

Tip (make it right)

If there are no special notes, the toy is crocheted under both parts of the loop. In some rows, there are special notes: ‘into the front loop only’ or ‘into the back loop only’. In that case, you need to follow these instructions.



Tip (make it right)

When making toys the right side looks like this:



And the backside looks like this:



Abbreviations

- ch(s) = chain(s)
- inc(s) = increasing(s) (2 sc in 1 st)
- st(s) = stitch(es)
- dec(s) = decreasing(s) (sc2tog)
- sc2tog = single crochet two stitches together
- sl st = slip stitch
- sc(s) = single crochet(s)
- rnd = round

If there is a record in the brackets in the pattern, multiplied by some number, for example (3 sc, 1 inc) x 3, it means you need to repeat this action 3 times, that is 3 sc, 1 inc, 3 sc, 1 inc.

TIP (yarn)

If you use different yarn, the toy will be bigger or smaller and you will need more or less yarn than stated in the pattern (i.e. thicker yarn will produce a larger toy and you may require more yarn).

Tip (gauge)

When making toys, you should use a much smaller hook than recommended for the yarn you choose. Make sure you crochet tight enough; otherwise, the stuffing will show through the holes.

USA/UK terminology comparison chart.

Abbreviations USA	Abbreviations UK
ch - chain	ch - chain
sc - single crochet	dc - double crochet
hdc - half double crochet	htr - half treble
dc - double crochet	tr - treble
tr - treble (triple crochet)	dtr - double treble
dtr - double treble	tr tr - triple treble
sl st - slip stitch	sl - slip stitch

Other differences in crochet terminology used:

Terminology USA	Terminology UK
fasten off	cast off
skip	miss
gauge	tension
yarn over (yo)	yarn over hook (yoh)

Skill levels



BEGINNER

Projects for first-time crocheters using basic stitches. Minimal shaping.



EASY

Projects using yarn with basic stitches, repetitive stitch patterns, simple color changes, and simple shaping and finishing.



INTERMEDIATE

Projects using a variety of techniques, such as basic lace patterns or color patterns, mid-level shaping and finishing.



EXPERIENCED

Projects with intricate stitch patterns, techniques and dimension, such as non-repeating patterns, multi-color techniques, fine threads, small hooks, detailed shaping and refined finishing.



Ear (make 2)

Main yarn and matching crochet hook

Rnd 1. 6 sc in magic ring = 6 sts

Rnd 2. 6 inc = 12 sts

Rnd 3. (1 sc, 1 inc) x 6 = 18 sts

Rnds 4-5. 1 sc in each st around = 18 sts

Rnd 6. (1 sc, 1 dec) x 6 = 12 sts

Rnd 7. (2 sc, 1 dec) x 3 = 9 sts

Rnd 8. 1 sc in each st around = 9 sts

Rnd 9. (1 sc, 1 dec) x 3 = 6 sts

Rnd 10. 5 sc, 1 sl st = 6 sts

Fasten off, leaving a tail for sewing.



Hanging loop (if you make Grumble or Grubby)

Ch 50 with main yarn, fasten off and run it through a bead. Secure with a firm knot.



Mouth

Main yarn and matching crochet hook

Rnd 1. 6 sc in magic ring = 6 sts

Rnd 2. 6 inc = 12 sts

Rnd 3. (1 sc, 1 inc) x 6 = 18 sts

Rnd 4. (2 sc, 1 inc) x 6 = 24 sts

Rnd 5. (3 sc, 1 inc) x 6 = 30 sts

Rnd 6. 1 sc in each st around = 30 sts

Rnd 7. (4 sc, 1 inc) x 6 = 36 sts

Rnd 8. 1 sc in each st around = 36 sts

Rnd 9. (5 sc, 1 inc) x 6 = 42 sts

Rnds 10-12. 1 sc in each st around = 42 sts

Rnd 13. (6 sc, 1 inc) x 6 = 48 sts

Rnd 14. 47 sc, 1 sl st = 48 sts

Fasten off.



Head

Main yarn and matching crochet hook

Rnd 1. 6 sc in magic ring = 6 sts

Note: Do not pull the magic ring tight keeping in mind that you will have to run a loop through it later if you make Grumble or Grubby.

Rnd 2. 6 inc = 12 sts

Rnd 3. (1 sc, 1 inc) x 6 = 18 sts

Rnd 4. (2 sc, 1 inc) x 6 = 24 sts

Rnd 5. (3 sc, 1 inc) x 6 = 30 sts

Rnd 6. 1 sc in each st around = 30 sts

Rnd 7. (4 sc, 1 inc) x 6 = 36 sts

Rnd 8. 1 sc in each st around = 36 sts

Rnd 9. (5 sc, 1 inc) x 6 = 42 sts

Rnd 10. (6 sc, 1 inc) x 6 = 48 sts

Rnds 11-12. 1 sc in each st around = 48 sts

Rnd 13. (7 sc, 1 inc) x 6 = 54 sts

Rnds 14-15. 1 sc in each st around = 54 sts

Rnd 16. (8 sc, 1 inc) x 6 = 60 sts

Rnds 17-18. 1 sc in each st around = 60 sts

Rnd 19. 18 sc along the head, join the mouth with the right sides facing each other and work 24 sc through the sts of the mouth and the head starting from any sts of the mouth (insert the hook from the wrong side of the mouth), 18 sc along the head = 60 sts



Rnd 20. 12 sc along the head, skip 6 of the head, 24 sc using the unworked sts of the mouth, skip 6 sts of the head, 12 sc along the head = 48 sts

You will notice two openings. They are for the arms.

Rnd 21. 1 sc in each st around = 48 sts

Rnd 22. (6 sc, 1 dec) x 6 = 42 sts

Rnd 23. 1 sc in each st around = 42 sts

If you make Grumble or Grubby, you should secure the hanging loop now. Run the loop through the top of the head.

Rnd 24. (5 sc, 1 dec) x 6 = 36 sts

Rnd 25. (4 sc, 1 dec) x 6 = 30 sts

Rnd 26. (3 sc, 1 dec) x 6 = 24 sts

Rnd 27. (2 sc, 1 dec) x 6 = 18 sts

Stuff the head. Stuff the mouth very slightly.

Rnd 28. (1 sc, 1 dec) x 6 = 12 sts

Rnd 29. 6 dec = 6 sts

Fasten off and weave in loose ends.



Arms

Main yarn and matching crochet hook

Note: The arms are 30 rounds long but if you think they turn out too long, feel free to make them shorter by skipping some of the rounds suggested then finishing with Rnd 30.

Go back to the openings for the arms. Join main yarn to the 1st opening and work 9 sc around it. Count it as Rnd 1. Continue working:

Rnd 2-29: 1 sc in each st around = 9 sts

Rnd 30: 8 sc, 1 sl st = 9 sts

Fasten off, leaving a tail for sewing. Do not stuff the arm.

Repeat the same for the second arm working around the 2nd opening.



Tooth (make 2)

Yarn for the teeth and matching crochet hook

Rnd 1. 6 sc in magic ring = 6 sts

Rnd 2. 1 sc in each st around = 6 sts

Rnd 3. (2 sc, 1 inc) x 2 = 8 sts

Rnd 4. (1 sc, 1 inc) x 4 = 12 sts

Rnds 5-7. 1 sc in each st around = 12 sts

Flatten the piece and close by working 6 sc across opening through both sides.

Fasten off and weave in loose ends.



Eye (make 2)

Yarn for the eyes and matching crochet hook

Rnd 1. 6 sc in magic ring = 6 sts

Note: Do not pull the magic ring tight keeping in mind that you will have to insert a ready-made eye through it later.

Rnd 2. 6 inc = 12 sts

Rnd 3. (1 sc, 1 inc) x 6 = 18 sts

Rnd 4. 5 sc, 2 inc, 7 sc, 2 inc, 2 sc = 22 sts

Rnd 5. 7 sc, 1 inc, 10 sc, 1 inc, 3 sc = 24 sts

Rnds 6-7. 1 sc in each st around = 24 sts

Rnd 8. 5 sc, 3 dec, 12 sc, 1 sl st = 21 sts

Fasten off. Stuff slightly.



Assembling

Make a small hole at the center of the eye's Rnd 1 to insert a ready-made eye later.

Sew the white of the eye onto the head with the mouth in front and facing up for **Grumble** and **Grubby** (the top of the eye aligns with Rnd 9 of the head) and the mouth in front and facing down for **Cleanfreak** (the top of the eye aligns with Rnd 20 of the head). Adjust the stuffing of the eyes if needed.



Needle sculpt the eyes the same way for all monsters as follows.

Thread your needle with strong thread. Insert the needle at the center of the back to pull out at the center of the white of the eye (see picture).

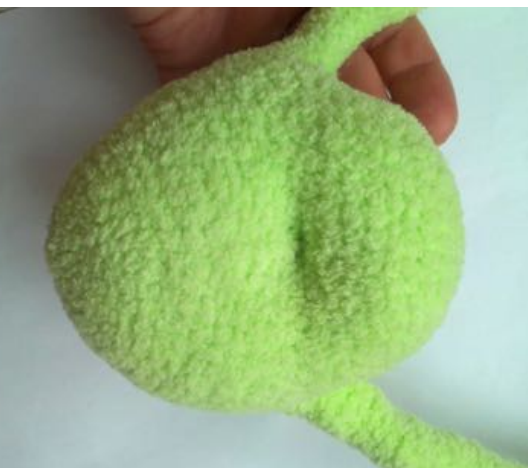




Run the needle through the loop of the ready-made eye and go back to your starting point. Pull up and secure with a firm knot. The loop of the eye should go into the opening of the white of the eye. Sew the 2nd eye the same way.



The back view:



For Cleanfreak:

Sew the bamboo ring (see picture).

Find the right position for the ears on the top of the head and sew them on. Do not cut off the thread. Run the needle out through the magic ring of the ear's Rnd 1 and go back to your starting point inserting the needle one stitch away. Pull up the yarn and secure.



Sew the arms together to form a circle. Tint the area around the eyes and inside the ears.



Sew the teeth into the mouth (see picture). Sew the mouth over the ring.



For Grubby:

Find the right position for the ears and sew them onto the head with the top of the ears facing up. Tint the ears and the areas around the eyes. Sew the teeth into the mouth placing them quite far apart from each other.



Make loops at the end of each arm big enough to insert the wooden stick inside and to keep it secure.



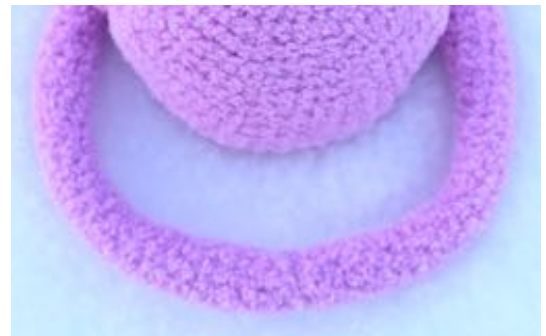
For Grumble:

Find the right position for the ears and sew them onto the head with the top of the ears facing down.

Tint the ears and the areas around the eyes. Sew the teeth into the mouth placing them quite close to each other.



Sew the arms together to form a circle.



Your monsters are ready!



FREE Crochet Patterns at www.LittleOwlsHut.com



Dog Buffy



Sheep Dolly



Dog Lucky

Crochet patterns available for sale at Little Owl's Hut
www.LittleOwlsHut.com



Christmas tree



Doll Chicken



Shih Tzu dog



Baby Goat

Coming soon!

Subscribe to our Newsletter at

www.LittleOwlsHut.com

to receive notifications when new patterns are available for sale and get

30% discount

if purchased within a few days of the release date.



Elephants



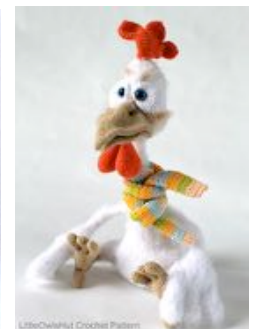
Doll



Doll



Cat



Rooster



Download the free "QR-code APP" for your iPhone/smart-phone and scan this code to take you straight to our website.

And much more at www.LittleOwlsHut.com



Contacts: I'd love to see the results of your hard work! Please share photos of your finished creation directly on our [Facebook page](#), add project to the pattern on [Ravelry](#) and [Craftsy](#), email me, and/or find me on other sites. Just search "LittleOwlsHut".

Tell me about your crocheting adventures, I would love to hear it.

Find me on:

Facebook

<https://goo.gl/ydrkC5>



Ravelry Pattern shop

<http://goo.gl/lwFLSB>



Ravelry Group

<http://goo.gl/lwFLSB>



Craftsy

<http://goo.gl/VMtdJ8>



Download the free "QR-code APP" for your iPhone/smart-phone and scan this code to take you straight to our website.

Copyright notes: ©2016 LittleOwlsHut. Finished products created with this pattern may be used for commercial sale, provided you comply with the following:

- The items must be 100% handmade by you - the purchaser of the pattern (no production-line allowed). Every person who uses my patterns to make items for sale must have their own copy of the pattern.
- Any items for sale must state in the item description that they are based on 'LittleOwlsHut' pattern, include the name of the designer and also include a link to my website (www.LittleOwlsHut.com)
- Any items you sell based on my patterns must feature only your own photographs of the item you have made to sell. You do not have permission to use my photographs to help sell your work.

Text and images Copyright ©2016 by LittleOwlsHut, all rights reserved.

No pattern may be reproduced or distributed — mechanically, electronically, or by any other means, including photocopying, without written permission. I work very hard to design and write these patterns. Thank you so much for your understanding, and happy crocheting!

Warning: Because your finished project may have small parts, please be extremely cautious if you decide to give it to a child. Also, if you decide to sell your finished project, remember to include warning for people purchasing it.

