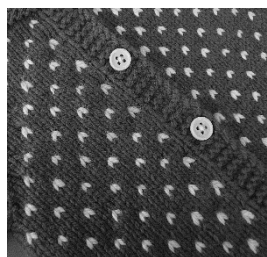


Hundreds

*a free knitting pattern, designed by Kelly Brooker
sourced from Ravelry.com*





Hundreds

*a free knitting pattern, designed by Kelly Brooker
sourced from www.ravelry.com*

100s & 1000s are highlights of a childhood growing up in New Zealand. The wee colourful balls are sprinkled all over sweet treats, and invoke excitement in kids, countrywide.

As an adult, I am lucky enough to have a South African partner; one with a fluent slang tongue. Hundreds is also a SA slang word heard frequently in our house, meaning 'good' or 'fine'.

This free pattern is written for 8ply/DK weight yarn, and to fit a newborn babe 3-4kg (7-9lb) in weight, with an approximate chest circumference of 37.5cm.

Construction

This pattern has you cast on at the neckline, and work flat utilising raglan increases and perform basic colourwork, until you reach the required chest size. From here the arm stitches are put on to waste yarn (or a stitch holder), and the body finished, working the garter stitch button band as you go. Once the body is completed, the sleeve stitches are returned to the needles and worked in the round to the required length.

Skills required

*knitting small circumferences in the round
long tail cast on
simple stranded colourwork
working top down raglan construction*

If you are not familiar with these techniques you may need to reference a knitting guide book, or view videos on the internet.

Abbreviations

***k**.....knit
k2tog.....knit 2 stitches together (a decrease)
kfb.....knit into the front and back of a stitch (an increase)
p.....purl
sl1p.....slip 1 stitch as if to purl
yo.....yarn over (an increase; in this case used to create a buttonhole)*

Gauge

*(in stocking stitch)
22sts/10cm on 4.0mm needles*

Materials

*5-6x 12mm buttons (dependent upon row gauge)
8ply/dk weight yarn (210-250m/100g)
This pattern is suitable for yarn with good elasticity and memory – a wool or wool blend.*

Suggested yarn:

***Augustbird White Gum Wool 8ply (236m/100g)**
1 skein main colour, plus up to 20m contrast colour
- split your contrast yarn into 2x 10m balls*

Equipment

*80cm 4.0mm circular needles
(or needle size required to achieve gauge)
6 stitch markers
2 stitch holders, or small lengths of waste yarn
darning needle for sewing in ends*

Note: if you are not working your sleeves via 'Magic Loop', you will not need an 80cm circular needle, however you will need whatever other needles you use to work small circumferences in the round (ie Double Pointed Needles)

The Pattern

Part A: Neck edging

Using **main colour**, and long tail cast on, cast on 52 stitches

Rows 1 and 2: sl1p, knit all stitches to end of row

Row 3: s1p, k3, place marker, k5, kfb (Left front), place marker, kfb, k6, kfb (sleeve), place marker, kfb, k14, kfb (back), place marker, kfb, k6, kfb (sleeve), place marker, kfb, k5, place marker, k4 (Right front)

Row 4 (buttonhole row): s1p, k1, yo, k2tog, knit to end of row, slipping markers as you pass them

Part B: Chest

Row 1 (Right Side): Work Left Front Chart Row 1, slip marker, (kfb, knit to 1 stitch left before next marker, kfb, slip marker)x3, work Right Front Chart Row 1

Row 2 (Wrong Side): Work Right Front Chart Row 2, slip marker, purl to Left front, slipping markers as you pass them, work Left Front Chart Row 2

Row 3 (RS): Work Left Front Chart Row 3, slip marker, (kfb, knit to 1 stitch left before next marker, kfb, slip marker)x3, work Right Front Chart Row 3

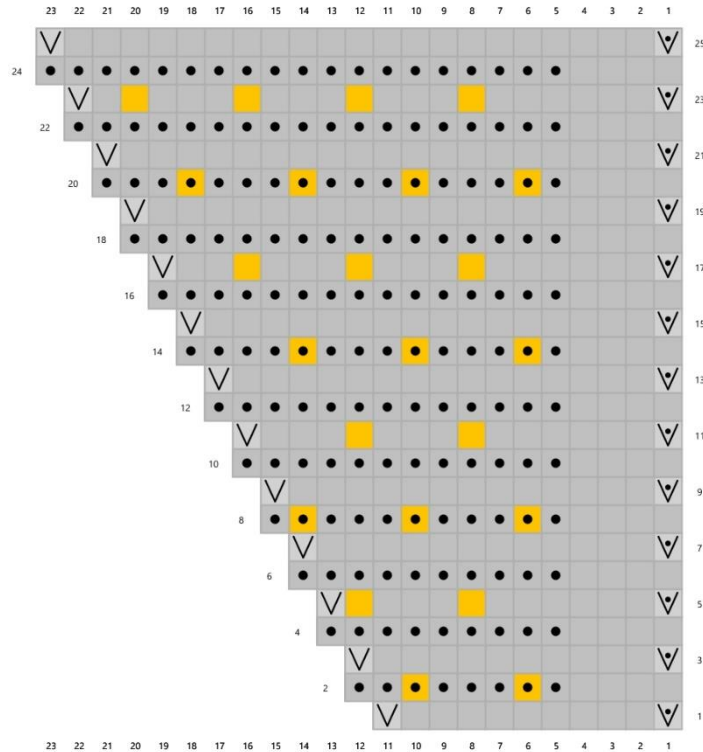
Row 4 (WS): Work Right Front Chart Row 4, slip marker, purl to Left front, slipping markers as you pass them, work Left Front Chart Row 4

NOTE: Buttonholes are worked on **Neck Edging Row 4**, then **evenly spaced every 4-5cm** throughout the chest and body on a **WS row**. Substitute the "s1p, k3" at the start of each of these rows with "s1p, k1, yo, k2tog", then work remainder of row as normal (**Neck Edging Row 4** has been written in this manner to serve as an example).

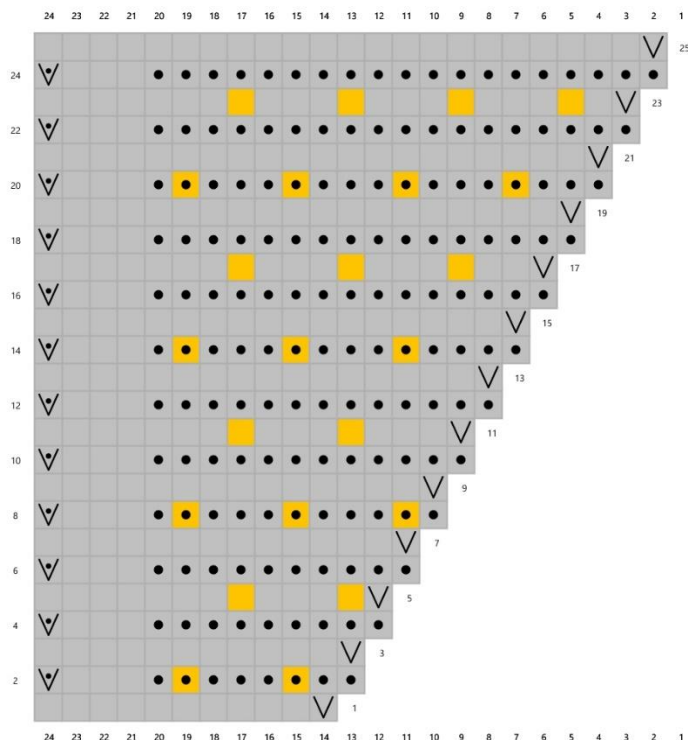
Chart Abbreviations

- Use Main colour. Knit on right side and wrong sides, unless specified otherwise (ie with a kfb or sl1p symbol)
- Use Contrast colour. Work as a knit stitch, unless specified otherwise (ie with a purl symbol)
- ▽ kfb – knit into the front and back of a stitch
- purl
- ▽ sl1p – slip 1 stitch purlwise

Continue alternating Right Side and Wrong Side rows, progressively moving up the Front Charts, and working buttonholes as directed above.
Stop once you have just worked Row 25 (RS row), and have 164sts, broken down as follows: 4/20/36/44/36/20/4



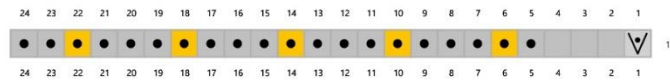
Left Front Chart



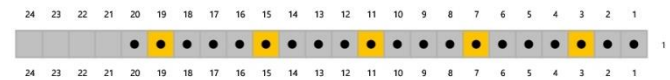
Right Front Chart

Part C: Sleeve separation

s1p, k3, remove marker, work Right Sleeve Separation Chart from right to left (front), remove marker, place stitches between this marker and next marker onto waste yarn (sleeve), slip marker, purl to next marker (back), slip marker, place stitches between this marker and next marker onto waste yarn (sleeve), remove marker, work Left Sleeve Separation Chart from right to left (front), purl to next marker, remove marker, knit to end of row (front).



Right Sleeve Separation Chart



Left Sleeve Separation Chart

After working sleeve separation row, you will have 92sts on the needles as follows: 24 stitches, stitch marker, 44 stitches, stitch marker, 24 stitches. You will have 36sts on each piece of waste yarn.

Part D: Body

Row 1 (Right Side): Work Left Body Chart Row 1, slip marker, knit to next marker, slip marker, work Right Body Chart Row 1

Row 2 (Wrong Side): Work Right Body Chart Row 2, slip marker, purl to marker, slip marker, work Left Body Chart Row 2

Row 3 (RS): Work Left Body Chart Row 3, slip marker, knit to next marker, slip marker, work Right Body Chart Row 3

Row 4 (WS): Work Right Body Chart Row 4, slip marker, purl to marker, slip marker, work Left Body Chart Row 4

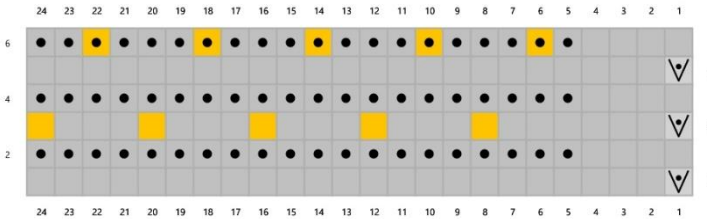
NOTE: Do not forget buttonholes evenly spaced every 4-5cm throughout the chest and body on a WS row.

Substitute the “s1p, k3” at the start of each of these rows with “s1p, k1, yo, k2tog”, then work remainder of row as normal.

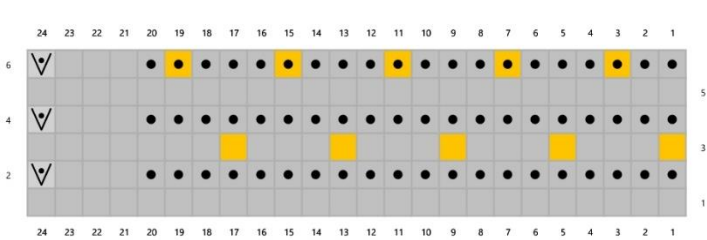
Part D: Body continued

Continue alternating Right Side and Wrong Side rows, progressively moving up the Body Charts, and working buttonholes as previously directed, until your work measures approximately 12-13cm from the underarm.

Ensure you finish having worked a plain main colour row.



Left Body Chart



Right Body Chart

Chart Abbreviations

- Use Main colour. Knit on right side and wrong sides, unless specified otherwise (ie with a kfb or sl1p symbol)
- Use Contrast colour. Work as a knit stitch, unless specified otherwise (ie with a purl symbol)
- kfb – knit into the front and back of a stitch
- purl
- sl1p – slip 1 stitch purlwise

Part E: Edging

Edging Row: s1p, k to end of row.

Repeat Edging Row until you have a 1.5-2cm edging.

Part E: Sleeves

Return stitches from one piece of waste yarn to your needle, and pick up 4sts under each arm, placing a marker in the centre of these 4sts just picked up (40sts). You will be working sleeve in the round. The marker sits under the arm and marks the start/finish of round.

Part E: Sleeves continued

*Knit in stocking stitch (knit all stitches, every round)
until sleeve measures approximately 1.25cm
from underarm*

Decrease round: *ssk, knit until 2 stitches from
end of round, k2tog*

*Alternate working 1cm stocking stitch with a
decrease round until you have a stitch count of
28sts*

*Knit in stocking stitch until sleeve measures
approximately 10cm from underarm*

*Work 4 rounds of garter stitch (knit one round,
purl one round).*

Cast off

Repeat for second sleeve

Finishing

Sew in all ends

*Wash in a gentle wool wash, then lay flat and in
shape, to dry*

*Securely sew on buttons to garter stitch button
band, corresponding with the buttonholes*

Augustbird - www.augustbird.com.au

Augustbird was created for creative types and for the lovers of handmade.

Augustbird began with Rebecca Robinson, who's artistic flare and overwhelming desire to knit-one purl-one lead her into the magical world of yarn dyeing. Rebecca's hand-dyed yarn received a wonderful response from the get-go and is now sought after by many a knitter, both in Australia and overseas. Rebecca is an expert dyer of White Gum 8ply Ethical Superfine Merino.

White Gum Wool - www.whitegumwool.com.au

The story behind White Gum Wool is one of mamas and babies, of diversity and abundance, and of ethics—for the land, the animals and the people involved in making this yarn.

And the story includes you, because you, or your grandmother or friend will create something beautiful and lasting from this magical fibre.

White Gum Wool sheep are raised on a single farm, in the high midlands of Tasmania. They graze in mostly native pastures where they can find the plants they need to keep healthy.

Mamas teach their babies how to forage in this landscape, hanging out in family groups of grandmas, mamas and lambkins. Sheep are highly social animals, and keeping families together means the sheep are just plain happier.

The abundant, diverse landscapes are healthy, too—they are real ecosystems doing what ecosystems do best—turning sunlight and water into energy through a squillion different animal and plant pathways. No fertilisers, pesticides or fungicides are used in growing White Gum Wool.

White Gum Wool is made into yarn by Design Spun Ltd in New Zealand having first been scoured by Canterbury Wool Scourers. NewMerino® Chain of Custody (<http://newmerino.com.au/wp/>) certifies the sustainability and traceability of the yarn.

So, when you buy White Gum Wool, you are making a choice that honours the landscape, animals and people who make it possible.

White Gum Wool sheep have never been mulesed, and now they also wag their (undocked) tails behind them!

Hundreds, by Kelly Brooker, of PEKAPEKA design studio

©2014 Kelly Brooker all rights reserved

I give my blessing for you to knit and sell as many items using this pattern as you wish!

Need pattern support? Visit <http://www.ravelry.com/groups/pekapeka-design-studio>