

R O W A N

Harper

By Sarah Hatton



Harper

by Sarah Hatton



SIZE

	S	M	L	
To fit age	10-11	12-13	14-16	years

YARN

Kid Classic

A Rosewood 870

4 4 5 x 50gm

B Crushed Velvet 825

1 2 2 x 50gm

C Feather 828

1 2 2 x 50gm

D Plush 867

1 1 1 x 50gm

NEEDLES

1 pair 3¼mm (no 9) (US 5) needles

1 pair 4½mm (no 7) (US 7) needles

BUTTONS – 4 x BN1054

TENSION

22 sts and 28 rows to 10 cm measured over st st, 24 sts and 25 rows measured over fair isle patt, both using 4½mm (US 7) needles.

BACK

Using 3¼mm (US 5) needles and yarn A cast on 102 [110: 114] sts.

Row 1 (RS): K2, *P2, K2, rep from * to end.

Row 2: P2, *K2, P2, rep from * to end.

These 2 rows form rib.

Work in rib for a further 14 rows, inc [dec: dec] 1 st at centre of last row and ending with RS facing for next row. 103 [109: 113] sts.

Change to 4½mm (US 7) needles.

Beg with a K row, work in st st for 2 rows, ending with RS facing for next row.

Beg and ending rows as indicated and using the **fairisle** technique as described on the information page, now work in patt from chart

for body, which is worked entirely in st st beg with a K row, for 22 rows, ending with RS facing for next row.

Break off contrasts and cont in st st using yarn A only as folls:

Next row (RS): K5 [4: 6], K2tog, (K8 [7: 7], K2tog) 9 [11: 11] times, K6 [4: 6]. 93 [97: 101] sts.

Cont straight until back meas 17 [18: 19] cm, ending with RS facing for next row.

Shape armholes

Cast off 3 [4: 5] sts at beg of next 2 rows. 87 [89: 91] sts.

Dec 1 st at each end of next 5 rows, then on foll 3 alt rows. 71 [73: 75] sts.

Cont straight until armhole meas 19 [20: 21] cm, ending with RS facing for next row.

Shape back neck and shoulders

Cast off 5 [5: 6] sts at beg of next 2 rows. 61 [63: 63] sts.

Next row (RS): Cast off 5 [5: 6] sts, K until there are 9 [9: 8] sts on right needle and turn, leaving rem sts on a holder.

Work each side of neck separately.

Cast off 3 sts at beg of next row.

Cast off rem 6 [6: 5] sts.

With RS facing, rejoin yarn to rem sts, cast off centre 33 [35: 35] sts, K to end.

Complete to match first side, reversing shapings.

LEFT FRONT

Using 3¼mm (US 5) needles and yarn A cast on 51 [55: 55] sts.

Row 1 (RS): K2, *P2, K2, rep from * to last st, K1.

Row 2: K1, P2, *K2, P2, rep from * to end.

These 2 rows form rib.

Work in rib for a further 14 rows, dec 1 [2: 0] sts evenly across last row and ending with RS facing for next row. 50 [53: 55] sts.

Change to 4½mm (US 7) needles.

Beg with a K row, work in st st for 2 rows, ending with RS facing for next row.

Beg and ending rows as indicated, now work in patt from chart for body for 22 rows, ending with RS facing for next row.

Break off contrasts and cont in st st using yarn A only as folls:

Next row (RS): K4 [3: 4], K2tog, (K8 [7: 7], K2tog) 4 [5: 5] times, K4 [3: 4]. 45 [47: 49] sts.

Cont straight until left front matches back to beg of armhole shaping, ending with RS facing for next row.

Shape armhole

Cast off 3 [4: 5] sts at beg of next row. 42 [43: 44] sts.

Work 1 row.

Dec 1 st at armhole edge of next 5 rows, then on foll 3 alt rows. 34 [35: 36] sts.

Cont straight until 25 [27: 29] rows less have been worked than on back to beg of shoulder shaping, ending with **WS** facing for next row.

Shape neck

Cast off 8 [8: 7] sts at beg of next row. 26 [27: 29] sts.

Dec 1 st at neck edge of next 5 rows, then on foll 3 [4: 5] alt rows, then on 2 foll 4th rows. 16 [16: 17] sts.

Work 5 rows, ending with RS facing for next row.

Shape shoulder

Cast off 5 [5: 6] sts at beg of next and foll alt row.

Work 1 row.

Cast off rem 6 [6: 5] sts.

RIGHT FRONT

Using 3³/₄mm (US 5) needles and yarn A cast on 51 [55: 55] sts.

Row 1 (RS): K3, *P2, K2, rep from * to end.

Row 2: P2, *K2, P2, rep from * to last st, K1.

These 2 rows form rib.

Complete to match left front, reversing shapings.

SLEEVES

Using 3³/₄mm (US 5) needles cast on 50 [54: 54] sts.

Work in rib as given for back for 5 cm, inc [dec: inc] 1 st at centre of last row and ending with RS facing for next row. 51 [53: 55] sts.

Change to 4¹/₂mm (US 7) needles.

Beg with a K row, work in st st for 2 rows, inc 1 st at each end of first of these 2 rows and ending with RS facing for next row. 53 [55: 57] sts.

Beg and ending rows as indicated, using the **fairisle** technique as described on the information page and repeating the 18 row patt rep throughout, now work in patt from chart for sleeve, which is worked entirely in st st beg with a K row, as folls:

Inc 1 st at each end of 3rd and every foll 4th row to 61 [67: 71] sts, then on every foll 6th row until there are 81 [85: 89] sts, taking inc sts into patt.

Cont straight until sleeve meas 42 [43: 44] cm, ending with RS facing for next row.

Shape top

Keeping patt correct, cast off 3 [4: 5] sts at beg of next 2 rows. 75 [77: 79] sts.

Dec 1 st at each end of next 5 rows, then on every foll alt row until 59 sts rem, then on foll 9 rows, ending with RS facing for next row. 41 sts.

Cast off 5 sts at beg of next 4 rows.

Cast off rem 21 sts.

MAKING UP

Press.

Join both shoulder seams using back stitch, or mattress stitch if preferred.

Neckband

With RS facing, using 3³/₄mm (US 5) needles and yarn A, beg and ending at front opening edges, pick up and knit 34 [35: 37] sts up right side of neck, 40 [42: 42] sts from back, then 34 [35: 37] sts down left side of neck. 108 [112: 116] sts.

Row 1 (WS): K1, P2, *K2, P2, rep from * to last st, K1.

Row 2: K3, *P2, K2, rep from * to last st, K1.

These 2 rows form rib.

Cont in rib for a further 7 rows, ending with RS facing for next row.

Cast off in rib.

Button band

With RS facing, using 3³/₄mm (US 5) needles and yarn A, beg at top of neckband, pick up and knit 80 [84: 84] sts down left front opening edge to cast-on edge.

Beg with row 1, work in rib as given for neckband for 9 rows, ending with RS facing for next row.

Cast off in rib.

Buttonhole band

With RS facing, using 3³/₄mm (US 5) needles and yarn A, beg at cast-on edge, pick up and knit 80 [84: 84] sts up right front opening edge to top of neckband.

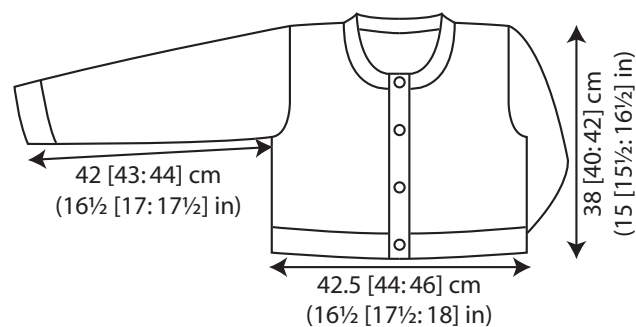
Beg with row 1, work in rib as given for neckband for 4 rows, ending with RS facing for next row.

Row 5 (WS): Rib 3 [4: 4], *cast off 2 sts (to make a buttonhole – cast on 2 sts over these cast-off sts on next row), rib until there are 22 [23: 23] sts on right needle after cast-off, rep from * twice more, cast off 2 sts (to make 4th buttonhole – cast on 2 sts over these cast-off sts on next row), rib to end.

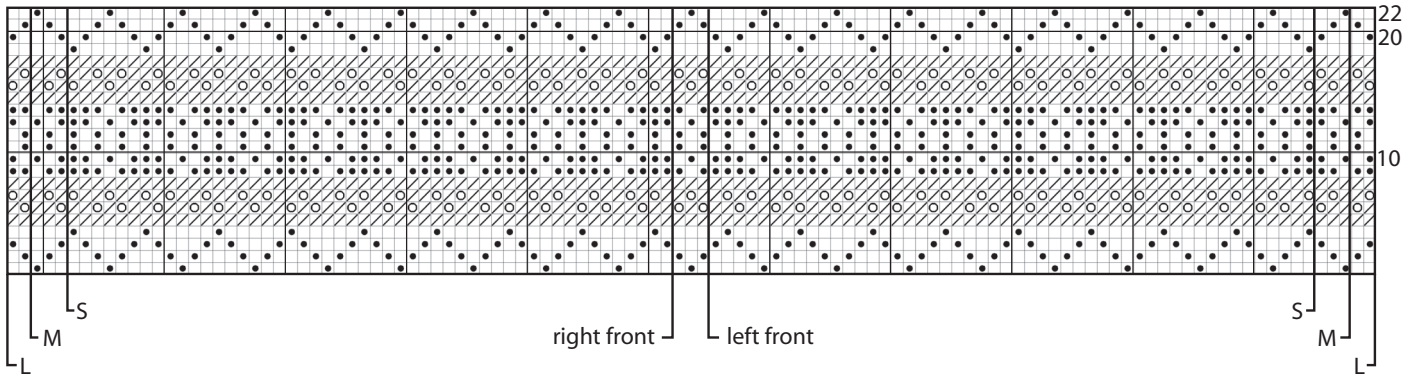
Work in rib for a further 4 rows, ending with RS facing for next row.

Cast off in rib.

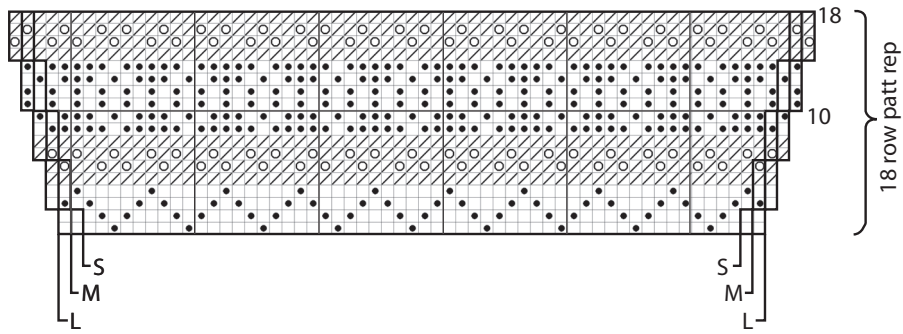
Set in sleeves using the set-in method.



Body Chart



Sleeve Chart



key

- A
- ◻ B
- ◻ C
- ◻ D