



Debbie Bliss

FREE DOWNLOAD TO CELEBRATE THE

Royal Baby

Rosebud Crossover

Materials

- 3(3:4:4:5) 50g balls each of Debbie Bliss Eco Baby in White 01(A) and small amounts in Apple 06 (B), Ruby 31 (C) and Blush 27 (D).
- Pair each of 2.75mm (US 2) and 3.25mm (US 3) knitting needles.

Tension

25 sts and 34 rows to 10cm/4in square over st st using 3.25mm (US 3) needles.

To fit ages

3 – 6 6 – 9 9 – 12 12 – 18
18 – 24 mnths

Chest

51	56	60	65	70cm
20	22	23.5	25.5	27.5in

Length to shoulder

22	24	27	30	33cm
8.75	9.5	10.75	12	13in

Sleeve length

13	14	16	18	21cm
5	5.5	6.25	7	8.25in

Chart Notes

• The Back starts the chart placement on the 1st chart row, but the Fronts start on the 19th chart row.

• Use separate small balls of yarn for each motif, twisting yarns on wrong side at colour changes to avoid holes.

Back

With 2.75mm (US 2) needles and A, cast on 66(72:78:84:90) sts.
K 3 rows.

Change to 3.25mm (US 3) needles.

Beg with a k row, work in st st from chart 1, repeating the 36 chart rows and beg on 1st chart row as follows:

1st row K1(4:7:10:13) sts before patt rep, [k across 1st row of 16-st patt rep] 4 times, k1(4:7:10:13) sts after patt rep.

2nd row P1(4:7:10:13) sts before patt rep, [p across 2nd row of 16-st patt rep] 4 times, p1(4:7:10:13) sts after patt rep.

These 2 rows **form** st st and **set** the position of the chart. Working correct chart rows, cont in patt for a further 36(40:46:52:58) rows.

Shape armholes

Cast off 4 sts at beg of next 2 rows.
58(64:70:76:82) sts.

Work a further 32(36:40:44:48) rows.

Shape shoulders

Cast off 5(6:7:8:9) sts at beg of next 4 rows and 4 sts at beg of foll 2 rows.

Leave rem 30(32:34:36:38) sts on a holder.

Left Front

With 2.75mm (US 2) needles and A, cast on 66(72:78:84:90) sts.

K 3 rows.

Change to 3.25mm (US 3) needles.

Beg with a k row, work in st st from chart 1, repeating the 36 chart rows and beg on 19th chart row as follows:

1st row K1(4:7:10:13) sts before patt rep, [k across 19th row of 16-st patt rep] 3(4:4:4:4) times, k13(0:3:6:9) sts after patt rep, k4M.

2nd row K4M, p13(0:3:6:9) sts before patt rep, [p across 20th row of 16-st patt rep] 3(4:4:4:4) times, p1(4:7:10:13) sts after patt rep.

These 2 rows set the position of the chart.

Work a further 14(16:20:24:28) rows.

Shape front slope

Next row Patt to last 4 sts, leave these sts on a safety pin.

Next row Patt to end.

Next row Patt to last 3 sts, k2tog, k1.

Next row P1, p2tog, patt to end.

Rep the last 2 rows 9(10:11:12:13) times more.

42(46:50:54:58) sts.

Shape armhole

Next row Cast off 4 sts, patt to last 3 sts, k2tog, k1.

Next row P1, p2tog, patt to end.

Next row Patt to last 3 sts, k2tog, k1.

Next row P1, p2tog, patt to end.

Rep the last 2 rows 10(11:12:13:14) times more.

14(16:18:20:22) sts.

Work 10(12:14:16:18) rows, ending with a p row.

Shape shoulder

Next row Cast off 5(6:7:8:9) sts at beg of next row and foll right side row.

Next row P to end.

Next row Cast off rem 4 sts.

Right Front

With 2.75mm (US 2) needles and A, cast on 66(72:78:84:90) sts.

K 3 rows.

Change to 3.25mm (US 3) needles.

Beg with a k row, work in st st from chart 1, repeating the 36 chart rows and beg on 19th chart row as follows:

1st row K4M, k13(0:3:6:9) sts before patt rep, [k across 19th row of 16-st patt rep] 3(4:4:4:4) times, k1(4:7:10:13) sts after patt rep.

2nd row P1(4:7:10:13) sts before patt rep, [p across 20th row of 16-st patt rep] 3(4:4:4:4) times, p13(0:3:6:9) sts after patt rep, k4M.

These 2 rows set the position of the chart.

Work a further 14(16:20:24:28) rows.

Shape front slope

Next row K4, leave these sts on a safety pin, patt to end.

Next row Patt to end.

Next row K1, skpo, patt to end.

Next row Patt to last 3 sts, p2tog tbl, p1.

Rep the last 2 rows 9(10:11:12:13) times more.

Shape armhole

Next row K1, skpo, patt to end.

Next row Cast off 4 sts, patt to last 3 sts, p2tog tbl, p1.

Next row K1, skpo, patt to end.

Next row Patt to last 3 sts, p2tog tbl, p1.

Rep the last 2 rows 10(11:12:13:14) times more.

14(16:18:20:22) sts.

Work 11(13:15:17:19) rows, so ending with a p row.

Shape shoulder

Next row Cast off 5(6:7:8:9) sts at beg of next row and foll wrong side row.

Next row Patt to end.

Next row Cast off rem 4 sts.

Sleeves

With 2.75mm (US 2) needles and A, cast on 32(36:38:40:42) sts.

K 3 rows.

Change to 3.25mm (US 3) needles.

Beg with a k row, work in st st from chart 2, beg on 1st chart row as follows:

1st row K8(10:11:12:13)A, k across 1st row of 16-st patt rep, k8(10:11:12:13)A.

2nd row P8(10:11:12:13)A, p across 2nd row of 16-st patt rep, p8(10:11:12:13)A.

These 2 rows **set** the position of chart 2.

Working correct chart rows, work as follows:

Patt 4 rows.

Inc row K3, m1, patt to last 3 sts, m1, k3.

Patt 3 rows.

Taking inc sts into st st in A, rep the last 4 rows

6(7:9:11:12) times more and the inc row again.

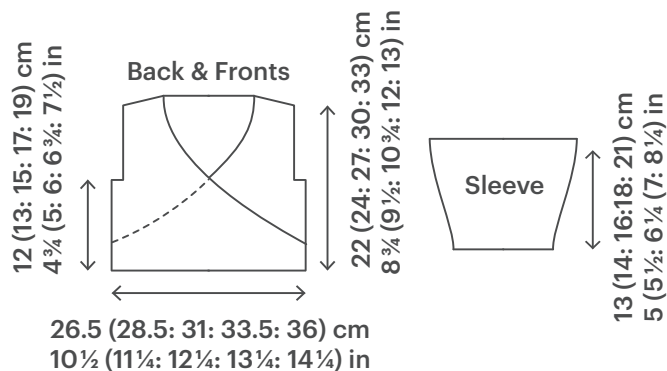
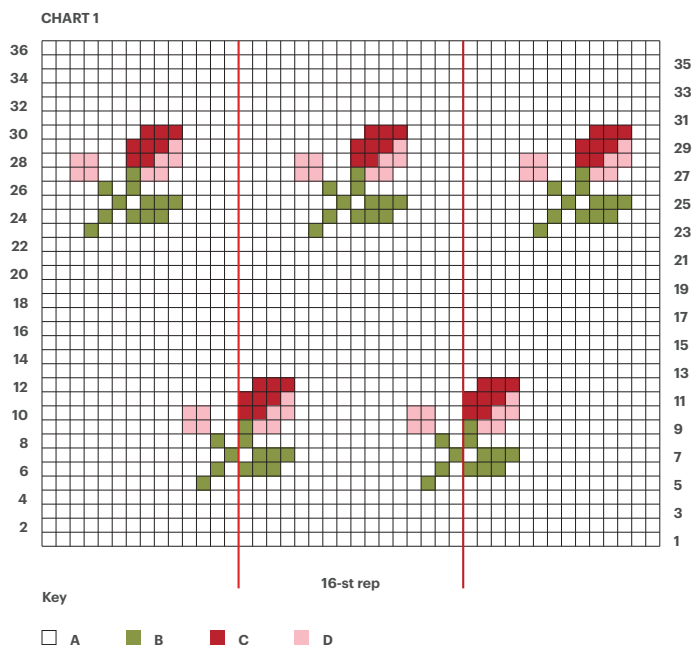
48(54:60:66:70) sts.

Cont straight until sleeve measures 13(14:16:18:21)cm/
5(5 1/2:6 1/4:7 8 1/4)in from cast on edge, ending with a
p row, working in A only after the 36 chart rows have been
completed.

Place markers at each end of last row.

Work a further 6 rows.

Cast off.



Neck Edging

With right side facing, 2.75mm (US 2) needles and A, slip 4 sts from right front safety pin onto a needle, pick up and k60(66:72:78:84) sts up right front slope, k30(32:34:36:38) sts from back neck holder, pick up and k60(66:72:78:84) sts down left front slope, k4 from left front safety pin. 158(172:186:200:214) sts.
K 2 rows.
Cast off knitwise.

Ties (make 2)

With 2.75mm (US 2) needles and A, cast on 5 sts.
Work in garter st for 32(36:40:44:48)cm/
12 1/2(14 1/4:15 3/4:17 1/4:19)in.
Cast off knitwise.

To Make Up

With centre of sleeve head to shoulder seam, sew sleeves into armholes, easing to fit. Leaving a small opening in right side seam level with beg of neck shaping, join sleeve and side seams. Sew ties to fronts at beg of neck shaping.

CHART 2

