

Hooded Woodland Deer Blanket



Yarn Requirements:

Sprightly Yarns Acrylic Wool Super Bulky - 80% Acrylic, 20% Wool (98yds/89m / 5.25oz/150g)



Sizes: Child (Adult). Child size shown in Bark (MC), Ecru (A), Greige (B)

	Child	Adult
MC	7	10
A	2	3
B	1	1
Total Yards	980	1372

Skill Level:



Crochet Hook Requirements:

US Q (16mm) or size needed to obtain gauge
US M/13 (9mm) or size needed to obtain gauge

Additional Supplies:

- Yarn needle
- 2 black buttons (30mm) with small amount of worsted weight yarn or thread for sewing (in cream)
- Small amount of black worsted weight yarn for nose
- Polyester fibrefill for muzzle

Abbreviations:

- Ch - Chain
- Dc - Double Crochet
- Hdc - Half Double Crochet
- MC - Main Color
- Rep - Repeat
- RS - Right Side
- Sc - Single Crochet
- Sctog - Single Crochet Decrease
- Sk - Skip
- Sl St - Slip Stitch
- Sp(s) - Space(s)
- St(s) - Stitch(es)
- WS - Wrong Side
- () - Work step in parentheses in indicated stitch

Techniques:

Magic Circle - See video Tutorial - <https://www.youtube.com/watch?v=3DWp7nVHRDo>

Working on the opposite side of chain tutorial - <https://www.youtube.com/watch?v=zGQ6KB2nVvA>

Gauge:

6 sts and 6 rows equal to 4" with 16mm crochet hook

Finished Measurements:

Child (Adult)

Blanket - Width 42 (52)"

Length 32 (42)"

Hood - Width 21 (23)"

Height (back of hood) 9 (10)"



Hooded Woodland Deer Blanket

Instructions:

Notes:

The blanket is worked from the bottom up. Deer tail is graphed into the back of the blanket. Each color change is worked from a separate ball to avoid carrying yarn. Spots are worked from pre-cut pieces of yarn 50" in length. See video tutorial for demonstration. The Hood is worked separately, then centred and sewn to the top of blanket. Turning ch doesn't count as a stitch.

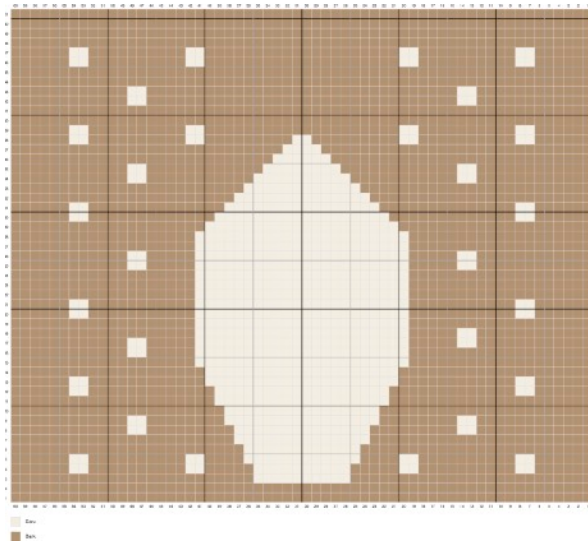
Video tutorial is included with pattern purchase but must be purchased separately at <https://www.mjsoffthehookdesigns.com/video-tutorials/>

Use coupon code DRV599 to receive for FREE. Link to view video will be in receipt from mjsoffthehookdesigns.com (not PayPal). Click on the LESSON to view.



Blanket: Child Size

Pre-cut 28 strands of A 50" in length for spots.



Row 1: With MC and larger hook ch 61, work 1 sc in 2nd ch from hook and each ch across, turn—60 sts.

Row 2: Ch 1, work 1 sc in each st across, turn—60 sts.

For each of the following rows; Ch 1 at the beginning of every row. Work 1 sc in each of the following stitches in the color indicated (work from separate balls for each color change). When changing colors, work last yarn over of last stitch with next color. Turn at the end of every row.

Row 3: (MC) x 25, A10, (MC) x 25

Row 4: (MC) x 6, A2, (MC) x 10, A2, (MC) x 5, A10, (MC) x 5, A2, (MC) x 10, A2, (MC) x 6

Row 5: (MC) x 6, A2, (MC) x 10, A2, (MC) x 4, A12, (MC) x 4, A2, (MC) x 10, A2, (MC) x 6

Row 6: (MC) x 24, A12, (MC) x 24

Row 7: (MC) x 23, A14, (MC) x 23

Row 8: (MC) x 12, A2, (MC) x 9, A14, (MC) x 9, A2, (MC) x 12

Row 9: (MC) x 12, A2, (MC) x 8, A16, (MC) x 8, A2, (MC) x 12

Row 10: (MC) x 22, A16, (MC) x 22

Row 11: (MC) x 21, A18, (MC) x 21

Hooded Woodland Deer Blanket

Row 12: (MC) x 6, A2, (MC) x 13, A18,
(MC) x 13, A2, (MC) x 6
Row 13: (MC) x 6, A2, (MC) x 12, A20,
(MC) x 12, A2, (MC) x 6
Row 14: (MC) x 20, A20, (MC) x 20
Row 15: (MC) x 19, A22, (MC) x 19
Row 16: (MC) x 19, A22, (MC) x 5, A2,
(MC) x 12
Row 17: (MC) x 12, A2, (MC) x 5, A22,
(MC) x 5, A2, (MC) x 12
Row 18: (MC) x 12, A2, (MC) x 5, A22,
(MC) x 19
Row 19: (MC) x 19, A22, (MC) x 19
Row 20: (MC) x 6, A2, (MC) x 11, A22,
(MC) x 11, A2, (MC) x 6
Row 21: (MC) x 6, A2, (MC) x 11, A22,
(MC) x 11, A2, (MC) x 6
Row 22: (MC) x 19, A22, (MC) x 19
Row 23: (MC) x 19, A22, (MC) x 19
Row 24: (MC) x 19, A22, (MC) x 19
Row 25: (MC) x 12, A2, (MC) x 5, A22,
(MC) x 5, A2, (MC) x 12
Row 26: (MC) x 12, A2, (MC) x 5, A22,
(MC) x 5, A2, (MC) x 12
Row 27: (MC) x 19, A22, (MC) x 19
Row 28: (MC) x 19, A22, (MC) x 19
Row 29: (MC) x 20, A20, (MC) x 20
Row 30: (MC) x 6, A2, (MC) x 13, A18,
(MC) x 13, A2, (MC) x 6
Row 31: (MC) x 6, A2, (MC) x 14, A16,
(MC) x 14, A2, (MC) x 6
Row 32: (MC) x 23, A14, (MC) x 23
Row 33: (MC) x 24, A12, (MC) x 24
Row 34: (MC) x 12, A2, (MC) x 11, A10,
(MC) x 11, A2, (MC) x 12
Row 35: (MC) x 12, A2, (MC) x 12, A8,
(MC) x 12, A2, (MC) x 12
Row 36: (MC) x 27, A6, (MC) x 27
Row 37: (MC) x 28, A4, (MC) x 28
Row 38: (MC) x 6, A2, (MC) x 10, A2, (MC)
x 9, A2, (MC) x 9, A2, (MC) x 10, A2, (MC) x 6
Row 39: (MC) x 6, A2, (MC) x 10, A2, (MC)
x 20, A2, (MC) x 10, A2, (MC) x 6
Row 40: (MC) x 60
Row 41: (MC) x 60

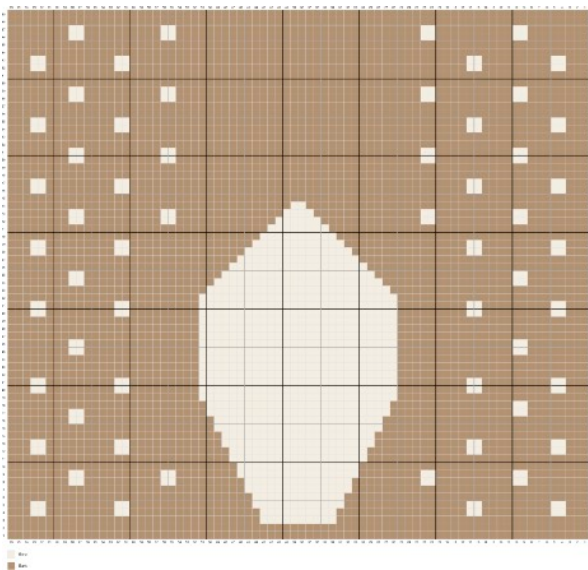
Row 42: (MC) x 12, A2, (MC) x 32, A2,
(MC) x 12
Row 43: (MC) x 12, A2, (MC) x 32, A2,
(MC) x 12
Row 44: (MC) x 60
Row 45: (MC) x 60
Row 46: (MC) x 6, A2, (MC) x 10, A2, (MC)
x 20, A2, (MC) x 10, A2, (MC) x 6
Row 47: (MC) x 6, A2, (MC) x 10, A2, (MC)
x 20, A2, (MC) x 10, A2, (MC) x 6
Rows 48-50: (MC) x 60
After row 50 fasten off.



Hooded Woodland Deer Blanket

Blanket: Adult Size

Pre-cut 58 strands of A 50" in length for spots.



Row 1: With MC and larger hook ch 77, work 1 sc in 2nd ch from hook and each ch across, turn—76 sts.

Row 2: Ch 1, work 1 sc in each st across, turn—76 sts.

For each of the following rows; Ch 1 at the beginning of every row. Work 1 sc in each of the following stitches in the color indicated (work from separate balls for each color change). When changing colors, work last yarn over of last stitch with next color. Turn at the end of every row.

Row 3: (MC) x 33, A10, (MC) x 33

Row 4: (MC) x 3, A2, (MC) x 9, A2, (MC) x 17, A10, (MC) x 17, A2, (MC) x 9, A2, (MC) x 3

Row 5: (MC) x 3, A2, (MC) x 9, A2, (MC) x 16, A12, (MC) x 16, A2, (MC) x 9, A2, (MC) x 3

Row 6: (MC) x 32, A12, (MC) x 32

Row 7: (MC) x 31, A14, (MC) x 31

Row 8: (MC) x 8, A2, (MC) x 10, A2, (MC) x 9, A14, (MC) x 9, A2, (MC) x 10, A2, (MC) x 8

Row 9: (MC) x 8, A2, (MC) x 10, A2, (MC) x 8, A16, (MC) x 8, A2, (MC) x 10, A2, (MC) x 8

Row 10: (MC) x 30, A16, (MC) x 30

Row 11: (MC) x 29, A18, (MC) x 29

Row 12: (MC) x 3, A2, (MC) x 9, A2, (MC) x 13, A18, (MC) x 13, A2, (MC) x 9, A2, (MC) x 3

Row 13: (MC) x 3, A2, (MC) x 9, A2, (MC) x 12, A20, (MC) x 12, A2, (MC) x 9, A2, (MC) x 3

Row 14: (MC) x 28, A20, (MC) x 28

Row 15: (MC) x 27, A22, (MC) x 27

Row 16: (MC) x 27, A22, (MC) x 17, A2, (MC) x 8

Row 17: (MC) x 8, A2, (MC) x 16, A24, (MC) x 16, A2, (MC) x 8

Row 18: (MC) x 8, A2, (MC) x 16, A24, (MC) x 26

Row 19: (MC) x 25, A26, (MC) x 25

Row 20: (MC) x 3, A2, (MC) x 9, A2, (MC) x 9, A26, (MC) x 9, A2, (MC) x 9, A2, (MC) x 3

Row 21: (MC) x 3, A2, (MC) x 9, A2, (MC) x 9, A26, (MC) x 9, A2, (MC) x 9, A2, (MC) x 3

Row 22: (MC) x 25, A26, (MC) x 25

Row 23: (MC) x 25, A26, (MC) x 25

Row 24: (MC) x 25, A26, (MC) x 25

Row 25: (MC) x 8, A2, (MC) x 15, A26, (MC) x 15, A2, (MC) x 8

Row 26: (MC) x 8, A2, (MC) x 15, A26, (MC) x 15, A2, (MC) x 8

Row 27: (MC) x 25, A26, (MC) x 25

Row 28: (MC) x 25, A26, (MC) x 25

Row 29: (MC) x 25, A26, (MC) x 25

Row 30: (MC) x 3, A2, (MC) x 9, A2, (MC) x 9, A26, (MC) x 9, A2, (MC) x 9, A2, (MC) x 3

Row 31: (MC) x 3, A2, (MC) x 9, A2, (MC) x 9, A26, (MC) x 9, A2, (MC) x 9, A2, (MC) x 3

Row 32: (MC) x 25, A26, (MC) x 25

Row 33: (MC) x 26, A24, (MC) x 26

Row 34: (MC) x 8, A2, (MC) x 17, A22, (MC) x 17, A2, (MC) x 8

Row 35: (MC) x 8, A2, (MC) x 18, A20, (MC) x 18, A2, (MC) x 8

Row 36: (MC) x 29, A18, (MC) x 29

Row 37: (MC) x 30, A16, (MC) x 30

Row 38: (MC) x 3, A2, (MC) x 9, A2, (MC) x 15, A14, (MC) x 15, A2, (MC) x 9, A2, (MC) x 3

Row 39: (MC) x 3, A2, (MC) x 9, A2, (MC) x 16, A12, (MC) x 16, A2, (MC) x 9, A2, (MC) x 3

Row 40: (MC) x 33, A10, (MC) x 33

Row 41: (MC) x 34, A8, (MC) x 34

Hooded Woodland Deer Blanket

Row 42: (MC) x 8, A2, (MC) x 10, A2, (MC) x 13, A6, (MC) x 13, A2, (MC) x 10, A2, (MC) x 8

Row 43: (MC) x 8, A2, (MC) x 10, A2, (MC) x 14, A4, (MC) x 14, A2, (MC) x 10, A2, (MC) x 8

Row 44: (MC) x 37, A2, (MC) x 37

Row 45: (MC) x 76

Row 46: (MC) x 3, A2, (MC) x 9, A2, (MC) x 44, A2, (MC) x 9, A2, (MC) x 3

Row 47: (MC) x 3, A2, (MC) x 9, A2, (MC) x 44, A2, (MC) x 9, A2, (MC) x 3

Row 48: (MC) x 76

Row 49: (MC) x 76

Row 50: (MC) x 8, A2, (MC) x 10, A2, (MC) x 32, A2, (MC) x 10, A2, (MC) x 8

Row 51: (MC) x 8, A2, (MC) x 10, A2, (MC) x 32, A2, (MC) x 10, A2, (MC) x 8

Row 52: (MC) x 76

Row 53: (MC) x 76

Row 54: (MC) x 3, A2, (MC) x 9, A2, (MC) x 44, A2, (MC) x 9, A2, (MC) x 3

Row 55: (MC) x 3, A2, (MC) x 9, A2, (MC) x 44, A2, (MC) x 9, A2, (MC) x 3

Row 56: (MC) x 76

Row 57: (MC) x 76

Row 58: (MC) x 8, A2, (MC) x 10, A2, (MC) x 32, A2, (MC) x 10, A2, (MC) x 8

Row 59: (MC) x 8, A2, (MC) x 10, A2, (MC) x 32, A2, (MC) x 10, A2, (MC) x 8

Row 60: (MC) x 76

Row 61: (MC) x 76

Row 62: (MC) x 3, A2, (MC) x 9, A2, (MC) x 44, A2, (MC) x 9, A2, (MC) x 3

Row 63: (MC) x 3, A2, (MC) x 9, A2, (MC) x 44, A2, (MC) x 9, A2, (MC) x 3

Row 64: (MC) x 76

Row 65: (MC) x 76

Row 66: (MC) x 8, A2, (MC) x 10, A2, (MC) x 32, A2, (MC) x 10, A2, (MC) x 8

Row 67: (MC) x 8, A2, (MC) x 10, A2, (MC) x 32, A2, (MC) x 10, A2, (MC) x 8

Row 68: (MC) x 76

After row 68 fasten off.



Hood:

Sizes: Child (Adult)

Pattern is written for smallest size with larger sizes in parentheses (.). If there is only 1 number, it applies to all sizes.

Row 1: With MC and larger hook, ch 9 (11), work 1 sc in 2nd ch from hook and in each of next 6 (8) chs; work 2 sc in last ch, working on the opposite side of ch, work 2 sc in first ch; work 1 sc in each of next 7 (9) chs, turn—18 (22) sts.

Row 2: Ch 1, work 1 sc in first st and in each of next 6 (8) sts, work 2 sc in each of next 4 sts, work 1 sc in each of next 7 (9) sts, turn—22 (26) sts.

Row 3: Ch 1, work 1 sc in first st and in each of next 7 (9) sts, work 2 sc in each of next 6 sts, work 1 sc in each of next 8 (10) sts, turn—28 (32) sts.

Row 4: Ch 1, work 1 sc in each st across, turn—28 (32) sts.

Row 5: Ch 1, work 1 sc in first st and in each of next 9 (11) sts, work 2 sc in each of next 8 sts, work 1 sc in each of next 10 (12) sts, turn—36 (40) sts.

Rows 6-19 (21): Ch 1, work 1 sc in each st, across, turn—36 (40) sts. Fasten off at end of

Hooded Woodland Deer Blanket

last row leaving a long tail for sewing on blanket.

Ears: *Make 2*

Backing

Row 1: With MC and smaller hook, ch 3, work 1 sc in 2nd ch from hook and in next ch, turn—2 sts.

Row 2: Ch 1, work 2 sc in each of first st, and next st, turn—4 sts.

Row 3: Ch 1, work 1 sc in each st across, turn—4 sts.

Row 4: Ch 1, work 2 sc in first st, work 1 sc in each of next 2 sts, work 2 sc in last st, turn—6 sts.

Row 5: Ch 1, work 1 sc in each st across, turn—6 sts.

Row 6: Ch 1, work 2 sc in first st, work 1 sc in each of next 4 sts, work 2 sc in last st, turn—8 sts.

Row 7: Ch 1, work 1 sc in each st across, turn—8 sts.

Row 8: Ch 1, work 1 sc tog next 2 sts, work 1 sc in each of next 4 sts, work 1 sc tog next 2 sts, turn—6 sts.

Row 9: Ch 1, work 1 sc in each st across, add 2 sc in final st and continue to sc in each sp around ear adding 3 sc in top tip of ear, add 2 sc in final corner, sl st to first sc Row 9 to join. Fasten off leaving a tail for sewing.

Inside piece

Row 1: With A and smaller hook, ch 3, work 1 sc in 2nd ch from hook and in next ch, turn—2 sts.

Row 2: Ch 1, work 2 sc in first st, work 1 sc next st, turn—3 sts.

Row 3: Ch 1, work 2 sc in first st, work 1 sc in each of next 2 sts, turn—4 sts.

Row 4: Ch 1, work 2 sc in first st, work 1 sc in each of next 3 sts, turn—5 sts.

Row 5: Ch 1, work 2 sc in first st, work 1 sc in each of next 4 sts, turn—6 sts.

Row 6: Ch 1, work 1 sc in each st across, turn—6 sts.

Row 7: Ch 1, work 1 sc tog next 2 sts, work 1 sc in each of next 2 sts, work 1 sc tog next 2 sts, turn—4 sts.

Row 8: Ch 1, work 1 sc in each st across, add 2 sc in final st and continue to sc in each sp around ear adding 3 sc in top tip of ear, add 2 sc in final corner, sl st to first sc Row 8 to join. Fasten off leaving a tail for sewing. Sew

to inside of outer ear. Pinch ear together and sew bottom of ear together.



Antlers: *Make 2*

Stuff as you go with polyester fibrefill.

Piece 1

Round 1: With B and smaller hook, Magic Circle, ch 1, work 6 sc in ring, pull ring tight, sl st to first sc to join—6 sts.

Rounds 2-13: Ch 1, work 1 sc in each st around, sl st to first sc to join—6 sts. Fasten off leaving a tail for sewing.

Piece 2

Round 1: With B and smaller hook, Magic Circle, ch 1, work 6 sc in ring, pull ring tight, sl st to first sc to join—6 sts.

Rounds 2-7: Ch 1, work 1 sc in each st around, sl st to first sc to join—6 sts. Fasten off leaving a tail for sewing.

Sew Piece 2 to Piece 1 at approximately the 7th and 8th round as pictured below.



Hooded Woodland Deer Blanket

Muzzle:

Round 1: With A and smaller hook, Magic Circle, ch 1, work 6 sc in ring, pull ring tight, sl st to first sc to join—6 sts.

Round 2: Ch 1, work 2 sc in each st around, sl st to first sc to join—12 sts.

Round 3: Ch 1, work 1 sc in each st around, sl st to first sc to join—12 sts.

Round 4: Ch 1, work 1 sc in first st, work 2 sc in next st, * work 1 sc in next st, work 2 sc in next st; rep from * around, sl st to first sc to join—18 sts.

Round 5: Ch 1, work 1 sc in each st around, sl st to first sc to join—18 sts.

Fasten off leaving a tail for sewing to hood. Use a small amount of black worsted weight yarn and a yarn needle. Sew a triangular shape nose to the first round of stitches. Sew by weaving yarn in and out to make the desired nose shape. See video tutorial.

Face Marking:

When changing colors, work last yarn over of last stitch with next color. Carry yarn as you go. See video tutorial.

Row 1: With B and smaller hook, ch 4, 1 sc in 2nd ch from hook and in each ch across, turn—3 sts.

Rows 2-5: Ch 1, 1 sc in each st across, turn—3 sts.

Row 6: Ch 1, work 2 sc in first st, work 1 sc in next st, work 2 sc in last st, turn—5 sts.

Row 7: Ch 1, work 2 sc in first st, change to A, work 1 sc in next st, change to B, work 1 sc in next st, change to A, work 1 sc in next st, change to B, work 2 sc in last st, turn—7 sts.

Row 8: Ch 1, work 2 sc in first st, work 1 sc in each of next 5 sts, work 2 sc in last st, turn—9 sts.

Row 9: Ch 1, work 2 sc in first st, change to A, work 1 sc in next st, change to B, work 1 sc in each of next 2 sts, change to A, work 1 sc in next st, change to B, work 1 sc in each of the next 2 sts, change to A, work 1 sc in next st, change to B, work 2 sc in last st, turn—11 sts.

Row 10: Ch 1, work 1 sc in each st across, turn—11 sts.

Row 11: Ch 1, work 1 sc tog in first 2 sts, work 1 sc in each of next 2 sts, change to A, work 1 sc in next st, change to B, work 1 sc in next st, change to A, work 1 sc in next st, change to B, work 1 sc in each of next 2 sts, work 1 sc tog in last 2 sts, turn—9 sts.

Adult only

Row 12: Ch 1, work 1 sc in each st across—9 sts. Fasten off leaving a long tail for sewing.

Sewing:

Note: Don't weave in any ends until all pieces are sewn in place and the hood is tried on. If you need to adjust sewing placement it's easier to remove a piece if the ends haven't been weaved.

To begin lay all the pieces out on the hood for an even placement. Sew Antlers first to the very top of hood so that the centre tips of antlers just touch each other. Sew antlers in place. Make sure the antlers are properly placed so they will stand up when wearing. Next sew the ears directly beside the antlers. Sew the muzzle just above the final round of hood stitches (stuff with a polyester fibrefill). Sew on the face marking along the top of muzzle and between the antlers.



Hooded Woodland Deer Blanket

Eyes:

Use yarn needle and worsted weight yarn to sew buttons on hood. Sew to either side of face marking. Black yarn may also be used to make eyes if preferred.

Hood Attachment

Center the hood on Blanket leaving approximately 10 (14)" on either side of hood. With MC yarn and RS facing sew hood to Blanket.



Edging:

Edge of blanket and hood is finished in MC. With 16mm hook and RS facing join yarn in any corner. Ch 1, work 1 sc in each sp around entire blanket and hood working 2 sc in blanket corners. Sl st to first sc to join. Fasten off and weave in ends.



Hooves: *Make 2*

Round 1: With B and 9mm hook, Magic Circle, work 9 (10) sc in ring, pull ring tight, sl st to first sc to join—9 (10) sts.

Round 2: Ch 1, work 2 sc in each st around, sl st to first sc to join—18 (20) sts.

Round 3: Ch 1, work 1 sc in each st around, sl st to first sc to join—18 (20) sts.

Rounds 4-11 (13): Rep Round 3.

After final round fasten off leaving a long tail for sewing to blanket. Pinch first 3 rounds together and sew in place to form a hoof shape. With RS facing sew hooves to top 4-5 rows of blanket. Sew only through one side leaving the hoof mitt open for hands.



Blanket tucks into the hood when not being used and makes a cute pillow! Fold in both sides (leaving hooves out) then fold up and tuck into hood. See video for folding tutorial.

Hooded Woodland Deer Blanket



This pattern is the sole property of MJ's Off the Hook Designs. This pattern is copyright protected and cannot be copied or reproduced in any way. You are welcome to sell your finished items from this pattern. I require a reference or link for my design. My photos are copyright protected and are not to be used to sell your items. This pattern is written in Standard American Terms.

I hope you enjoyed this pattern! For more designs by MJ's Off The Hook Designs see our [Ravelry](#), [Etsy](#), [Loveknitting](#), or [Craftsy Shop](#). Check out our [Facebook](#) and [Instagram](#) for daily inspiration!



See our Woodland Blanket Collection! More Designs coming soon!
Woodland Raccoon, Fox and Bear available now! For Yarn purchases use our affiliate link [HERE](#)

