

VINTAGE PICKUP TRUCK PATTERN

By

Caloca
crochet

Caloca
crochet



1. MATERIALS

- 3 mm hook
- Yarn: dark grey, light grey, red, white
- Sewing yarn needle
- Stuff material

The finished work measures 16 cm height, 32 cm width and 18 cm depth.

2. ABBREVIATIONS

CH_ Chain

SS_ Slip Stitch

SC_ Single Crochet

HDC_ Half Double Crochet

DC_ Double Crochet

TC_ Treble or Triple Crochet

BLO_ Back Loops Only

FLO_ Front Loops Only

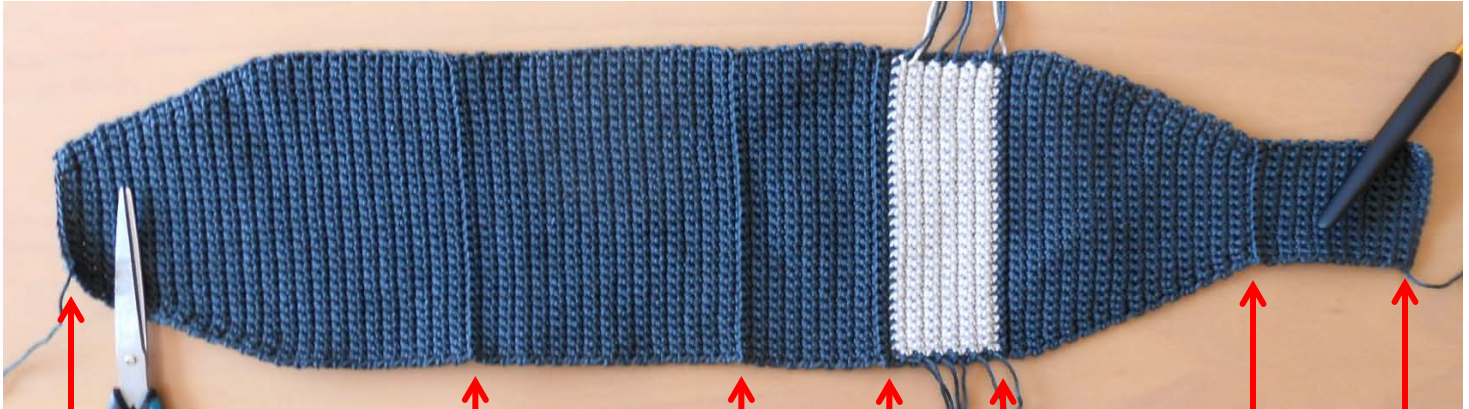
INC_ Increase

DEC_ Decrease



3. HOW TO MAKE IT

PICKUP CAB



END
Round 158

Round
112

Round
80

Round
64

Round
49

Round
21

START

Dark grey color:

- 13 CH
- Round 1 (starting on second CH from hook): 12 SC (12)
- Round 2 to 20: 12 SC (12)
- Round 21: 12 SC **BLO** (12)
- Round 22: 1 SC, INC 1 SC, 8 SC, INC 1 SC; 1 SC (14)
- Round 23: 14 SC (14)
- Round 24: 1 SC, INC 1 SC, 10 SC, INC 1 SC; 1 SC (16)
- Round 25 and 26: 16 SC (16)
- Round 27: 1 SC, INC 1 SC, 12 SC, INC 1 SC; 1 SC (18)
- Round 28 and 29: 18 SC (18)
- Round 30: 1 SC, INC 1 SC, 14 SC, INC 1 SC; 1 SC (20)
- Round 31 and 32: 20 SC (20)
- Round 33: 1 SC, INC 1 SC, 16 SC, INC 1 SC; 1 SC (22)
- Round 34 and 35: 22 SC (22)



- Round 36: 1 SC, INC 1 SC, 18 SC, INC 1 SC; 1 SC (24)
- Round 37 and 38: 24 SC (24)
- Round 39: 1 SC, INC 1 SC, 20 SC, INC 1 SC; 1 SC (26)
- Round 40 and 41: 26 SC (26)
- Round 41: 1 SC, INC 1 SC, 22 SC, INC 1 SC; 1 SC (28)
- Round 42 and 43: 28 SC (28)
- Round 44: 1 SC, INC 1 SC, 24 SC, INC 1 SC; 1 SC (30)
- Round 45 to 48: 30 SC (30)
- Round 49: 30 SC **BLO** (30)

At this point, we start making the windows, so we have to crochet **in dark and light grey color in the same round:**

- Round 50 to 61: 1 SC **dark grey**, 28 SC **light grey**, 1 SC **dark grey** (30)

From now on crochet only in dark grey color:

- Rounds 62 and 63: 30 SC (30)
- Round 64: 30 SC **BLO** (30)
- Rounds 65 to 79: 30 SC (30)
- Round 80: 30 SC **BLO** (30)
- Rounds 81 to 111: 30 SC (30)
- Round 112: 30 SC **BLO** (30)
- Rounds 113 to 134: 30 SC (30)
- Round 135: 1 SC, DEC 1 SC, 24 SC, DEC 1 SC; 1 SC (28)
- Round 136 and 137: 28 SC (28)
- Round 138: 1 SC, DEC 1 SC, 22 SC, DEC 1 SC; 1 SC (26)
- Round 139 and 140: 26 SC (26)
- Round 141: 1 SC, DEC 1 SC, 20 SC, DEC 1 SC; 1 SC (24)
- Round 142 and 143: 24 SC (24)
- Round 144: 1 SC, DEC 1 SC, 18 SC, DEC 1 SC; 1 SC (22)
- Round 145 and 146: 22 SC (22)
- Round 147: 1 SC, DEC 1 SC, 16 SC, DEC 1 SC; 1 SC (20)
- Round 148 and 149: 20 SC (20)
- Round 150: 1 SC, DEC 1 SC, 14 SC, DEC 1 SC; 1 SC (18)
- Round 151 and 152: 18 SC (18)
- Round 153: 1 SC, DEC 1 SC, 12 SC, DEC 1 SC; 1 SC (16)
- Round 154 and 155: 16 SC (16)
- Round 156: 1 SC, DEC 1 SC, 10 SC, DEC 1 SC; 1 SC (14)



- Round 157: 14 SC (14)
- Round 158: 1 SC, DEC 1 SC, 8 SC, DEC 1 SC; 1 SC (12)
- Close.

To finish the cab, sew together the beginning and the end of it as you can see on the pictures below:



PICKUP CARGO BED (FLOOR)



CARGO BED STARTS HERE

Dark grey color:

- Round 1: 30 SC **FLO** (30)
- Rounds 2 to 36: 30 SC (30)
- Round 37: 30 SC **BLO** (30)
- Rounds 38 to 40: 30 Sc (30)
- Round 41: 30 SC **BLO**
- Rounds 42 to 76: 30 SC (30)
- Close.



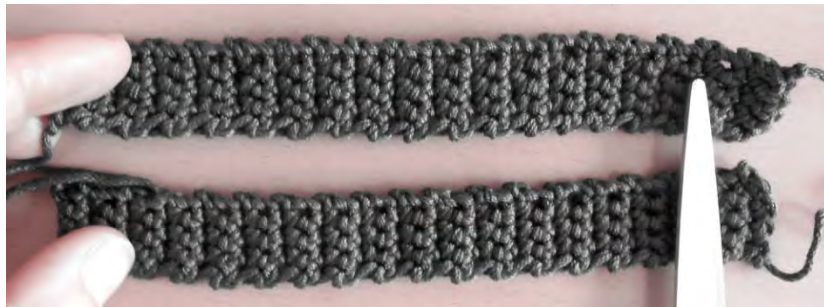


Let's now provide the cargo bed floor with some volume:

Make 2.

In dark grey color:

- 5 CH (5)
- Round 1: (starting from second CH from hook) 4 SC (4)
- Rounds 2 to 36: 4 SC (4)
- Close.



Sew these two side pieces to the cargo bed floor as follows:

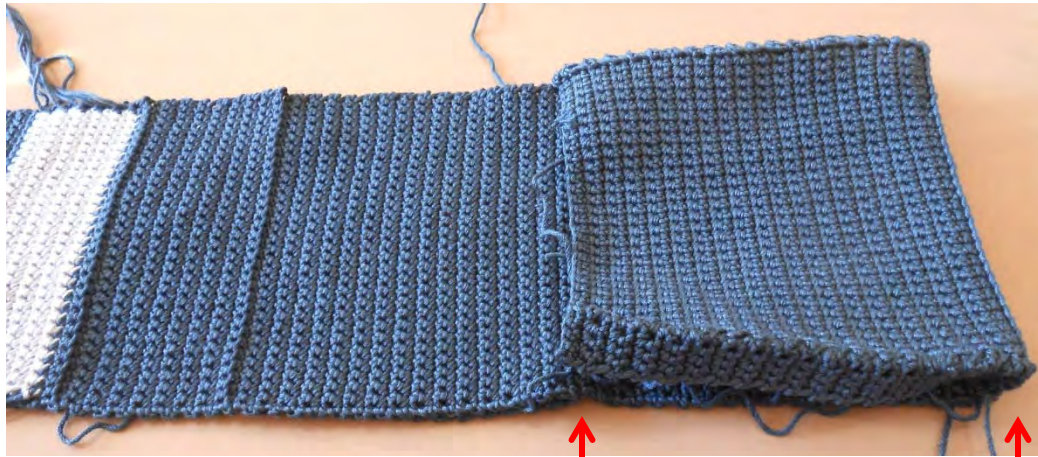
- First sew one piece:



- Then sew the other one:



Now fold and sew the cargo bed floor as follows:

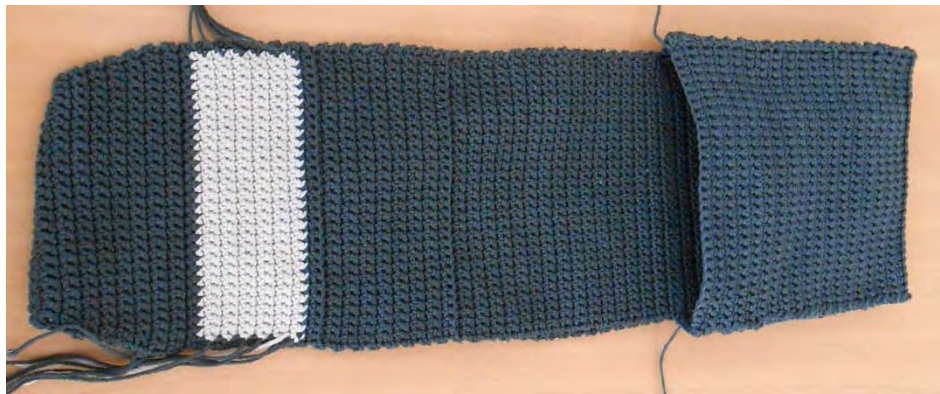


Fold it and sew it here

2



3



Stuff and close as follows:



PICKUP CAB DOORS



Make 2. Dark grey color:

- 38 CH
- Round 1 (starting on second CH from hook): 37 SC (37)
- Round 2 to 20: 37 SC (37)
- Round 21 to 24: 14 SC (14)

Now we start making the windows, so we have to crochet **in dark and light grey color in the same round:**

- Round 25 to 36: 1 SC **dark grey**, 12 SC **light grey**, 1 SC **dark grey** (14)

Now crochet only in dark grey color:

- Round 37: 14 SC (14)
- Round 38: 7 SC (7)
- Round 39: DEC 1 SC, 5 SC (6)
- Close.



Sew one door to the cab, stuff the cab and then sew the other door (as depicted below):



So far we have completed the pick cab and the cargo bed floor:



CARGO BEDSIDES

Dark grey color:

- 17 CH (17)
- Round 1: (starting from second CH from hook) 16 SC (16)
- Rounds 2 to 37: 16 SC (16)
- Round 38: 16 SC **BLO** (16)
- Rounds 39 to 71: 16 SC (16)
- Round 72: 16 SC **BLO** (16)
- Rounds 73 to 109: 16 SC (16)
- Close.



Sew the bedsides to the cargo bed floor as follows:



WHEELS

Make 4.

Light grey color:

- 6 SC in magic circle
- Round 1: 2 SC in each SC around (12)
- Round 2: *1 SC, INC 1 SC*. Repeat 6 times from *to* (18)

Change to red color:

- Round 3: *2 SC, INC 1 SC*. Repeat 6 times from *to* (24)
- Round 4: 24 SC **FLO** (24)

Change to dark grey color:

- Round 5: *3 SC, INC 1 SC* **all in BLO**. Repeat 6 times from *to* (30)

Change to white color:

- Round 6: *4 SC, INC 1 SC*. Repeat 6 times from *to* (36)
- Round 7: *5 SC, INC 1 SC*. Repeat 6 times from *to* (42)
- Round 8: *6 SC, INC 1 SC*. Repeat 6 times from *to* (48)
- Round 9: *7 SC, INC 1 SC*. Repeat 6 times from *to* (54)

Change to dark grey color:

- Round 10: 54 SC **BLO** (54)
- Rounds 11 to 13: 54 SC (54)
- Round 14: *7 SC, DEC 1 SC*. Repeat 6 times from *to* (48)
- Round 15: *6 SC, DEC 1 SC*. Repeat 6 times from *to* (42)
- Round 16: *5 SC, DEC 1 SC*. Repeat 6 times from *to* (36)
- Round 17: *4 SC, DEC 1 SC*. Repeat 6 times from *to* (30)
- Round 18: *3 SC, DEC 1 SC*. Repeat 6 times from *to* (24)
- Round 19: *2 SC, DEC 1 SC*. Repeat 6 times from *to* (18)
- Stuff
- Round 20: *1 SC, DEC 1 SC*. Repeat 6 times from *to* (12)
- Round 21: *DEC 1 SC*. Repeat 6 times from *to* (6)
- Close.





Sew the wheels to the cab and the cargo bed as follows:



MUD GUARDS

Make 2.

Dark grey color:

- 11 CH
- Round 1: (starting on second CH from the hook) 10 SC (10)
- Rounds 2 to 35: 10 SC (10)
- Round 36: 1 SC, DEC 1 SC, 4 SC, DEC 1 SC, 1 SC (8)

- Round 37: 1 SC, DEC 1 SC, 2 SC, DEC 1 SC, 1 SC (6)
- Rounds 38 to 57: 6 SC (6)
- Round 58: 1 SC, INC 1 SC, 2 SC, INC 1 SC, 1 SC (8)
- Round 59: 1 SC, INC 1 SC, 4 SC, INC 1 SC, 1 SC (10)
- Rounds 60 to 94: 10 SC (10)
- Close.

So far we have this:



Now fold and sew both sides together:



Finally we have the following:



So both parts should look like this:



Let's now sew them to the cab and the cargo bed as follows (one on each side of the truck):



BUMPER

White color:

- 23 CH
- Round 1: (starting on second CH from the hook) 22 SC (22)

Change to red color:

- Round 2: 22 SC (22)

Change to white color:

- Round 3: 22 SC (22)
- Close.



Now sew the bumper to the cab as follows:



SMALL HEADLAMPS

Make 2.

Yellow color:

- 6 SC in magic circle
- Round 1: 2 SC in each SC around (12)

Change to dark grey color:

- Round 2: 12 SC BLO (12)
- Round 3: 12 SC (12)

Then sew a white SS edge as follows:



Sew the headlamps to the cab:



BIG HEADLAMPS

Make 2.

Light grey color:

- 6 SC in magic circle
- Round 1: 2 SC in each SC around (12)
- Round 2: *1 SC, INC 1 SC*. Repeat 6 times from *to* (18)

Change to dark grey color:

- Round 3: 18 SC BLO (18)
- Round 4: 18 SC (18)
- Round 5: **All in BLO** *1 SC, DEC 1 SC*. Repeat 6 times from *to* (12)
- Stuff
- Round 6: *DEC 1 SC*. Repeat 6 times from *to* (6)
- Close.

Then sew a white SS edge.

Sew them to the cab as follows:



REAR LAMPS

Make 2.

Red color:

- 6 SC in magic circle
- Round 1: 2 SC in each SC around (12)
- Round 2: *1 SC, INC 1 SC*. Repeat 6 times from *to* (18)

Change to dark grey color:

- Round 3: 18 SC BLO (18)
- Round 4: 18 SC (18)

Then sew a white SS edge.



And sew them to the cargo bed backside:



WHITE DETAILS 1

In white color, sew a line around the 3 windows as follows:



SIDE MIRRORS

Make 2.

Light grey color:

- 6 SC in magic circle
- Round 1: 2 SC in each SC around (12)
- Round 2: *1 SC, INC 1 SC*. Repeat 6 times from *to* (18)

Change to dark grey color:

- Round 3: 18 SC BLO (18)
- Round 4: 18 SC (18)
- Round 5: **All in BLO** *1 SC, DEC 1 SC*. Repeat 6 times from *to* (12)
- Stuff
- Round 6: *DEC 1 SC*. Repeat 6 times from *to* (6)
- Close.

Then sew a red SS edge.



Sew them to the cab as follows:



WHITE DETAILS 2

In white color, sew a line on the cab's frontside as follows:

1



4



2



5



3



6



LICENCE PLATE

White color:

- 9 CH (9)
- Round 1: (starting from second CH from hook) 8 SC (8)
- Rounds 2 and 3: 8 SC (8)
- Close.



Use dark grey color to sew the licence plate to the cargo bed's backside as follows:



WHITE DETAILS 3

In white color, sew the door handles as follows:



Then sew the details over the mug guards:



RED DETAILS

In red color, sew the details on the cargo bedsides as follows:



4. FINISHED WORK

