



KOOLHAAS

a handknit hat. designed by jared flood

KOOLHAAS

by JARED FLOOD

FINISHED DIMENSIONS

Approximately 20" head circumference
7" (8") in height

SIZES

Small/Medium (Large)
To fit 20-23" (23-25") head circumference

YARN

Approximately 50g of worsted weight yarn
Samples shown in Naturally "Harmony 10-Ply" (Brown)
& Malabrigo "Worsted Merino" (Blue)

NEEDLES

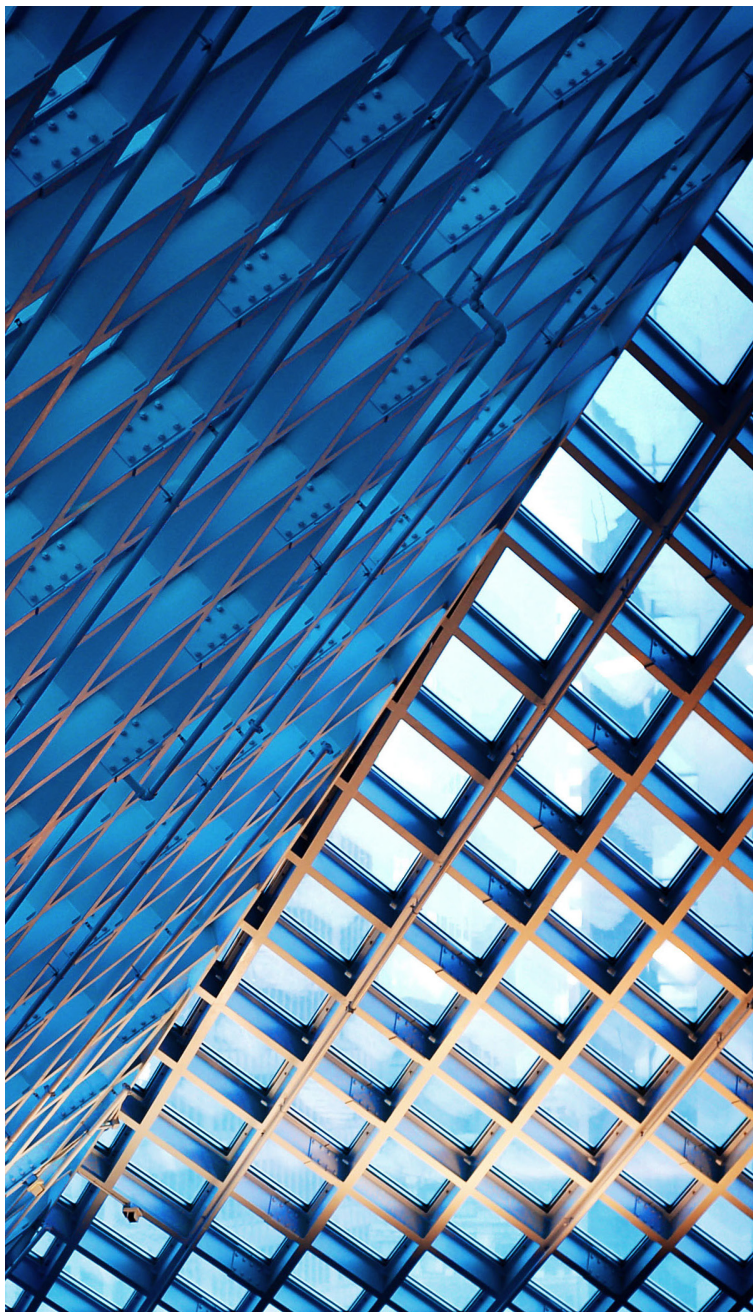
Suggested: one 16" circular in sizes US6/4mm
& US8/5mm; One set of double pointed needles in
larger size. Adjust needle sizes as necessary
to obtain your correct gauge.

TOOLS

Stitch marker, cable needle (CN) & tapestry needle

GAUGE

26 stitches & 30 rounds = 4" in Koolhaas Chart
on larger needle



PATTERN

With smaller circular needle, Cast On 104 stitches. Place marker and join work into round.

ESTABLISH 2x2 RIBBING

Round 1: *knit 1, purl 2, knit 1; repeat from * around.

Repeat last round 9 more times, or until piece measures 1.25" from CO

BEGIN PATTERNING

Changing to larger circular needle, **work Rounds 1-8 of Koolhaas**

Chart. NOTE: Marker placement will shift two times during each repeat of chart: once on Round 6, and again on Round 8. Work these rounds as follows:

Round 6: Work in pattern until you reach last stitch of round. Slip last stitch of round onto R needle, remove marker, slip stitch back to L needle & replace marker -- this indicates new Beginning of Round

Round 8: Work in pattern until you reach end of round. Remove marker, slip 1 stitch to R needle, replace marker -- this indicates new Beginning of Round

Work **Rounds 1-8** of chart 4 (5) times total.

Work **Round 1** once more.

BEGIN CROWN SHAPING

Work the following rounds, changing to double pointed needles when necessary.

Round 1: *purl 1, knit 2 stitches through the back loop (tbl), p2tog, knit 2 stitches tbl, purl 1; repeat from * around [91 stitches remaining on needle after completion of round]

Round 2: *purl 1, LC, purl 1, LC, purl 1; rep from * around

Round 3: *purl 1, knit 2 stitches tbl, purl 1, knit 2 stitches tbl, purl 1; repeat from * around

Round 4: *RCP, (slip 1, k2tog, pass slipped stitch over), LCP; repeat from * around [65 stitches remain on needle]

Round 5: *knit 1 tbl, purl 1, knit 1 tbl, purl 1, knit 1 tbl; repeat from * around until 5 stitches remain in round. Now, knit 1 tbl, purl 1, knit 1 tbl, purl 1, slip last stitch to R needle, remove marker, slip stitch back to L needle & replace marker.

Round 6: *SSK, purl 1, knit 1 tbl, purl 1; repeat from * around [52 stitches remain on needle]

Round 7: *Knit 1 tbl, purl 1, knit 1 tbl, purl 1; repeat from * around

Round 8: *Knit 1 tbl, purl 1, SSK; repeat from * around until you reach marker, remove marker, slip 1 stitch to R needle, replace marker [39 stitches remain on needle]

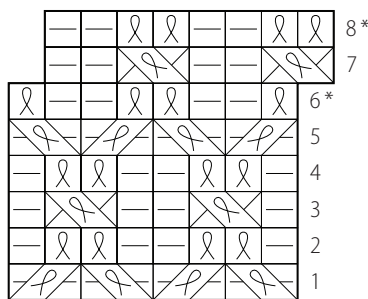
Round 9: *Purl 1, SSK; repeat from * around until you reach marker, remove marker, slip 1 stitch to R needle, replace marker [26 stitches remain on needle]

Round 10: *SSK; repeat from * around [13 stitches remain on needle]

Break yarn leaving an 8" tail. With tail threaded onto a blunt tapestry needle, draw tail through remaining 13 stitches and pull snugly to tighten and close top.

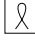

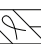

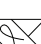
Securely weave in tail on WS of fabric. Weave in any additional loose ends. Lightly block, if desired.

KOOLHAAS CHART



* See note in written instructions

LEGEND

-  Knit Through Back Loop (k1tbl)
-  Purl
-  LCP: slip 1 to CN and hold in front, purl 1, k1tbl from CN
-  RCP: slip 1 to CN and hold to back, k1tbl, p1 from CN
-  LC: slip 1 to CN and hold in front, k1tbl, k1tbl from CN

This pattern originally appeared in the Fall 2007 issue of Interweave Knits magazine. The design was inspired by the work of Dutch architect Rem Koolhaas. His geometric, structural patterns at the Seattle Public Library informed the cabled lattice motif encircling the beanie.