



HABITAT

HANDKNIT CABLED BEANIE
by Jared Flood



BLUEPRINT

MATERIALS

Approximately 120 (135) yards of worsted-weight wool

Sample shown in **Brooklyn Tweed SHELTER** (100% US Targhee-Columbia Wool; 140 yards/50g)
1 skeins in "Nest"

GAUGE

4.5 stitches and 7 rows per inch in Stockinette stitch with larger needle

NEEDLES

A 16" circular in size needed to obtain gauge listed above
A 16" circular one size smaller than 'gauge needle'
One set of DPNs in larger size

Suggested needle sizes: US 7 (4.5mm) & US 8 (5mm)

TOOLS

Stitch markers, blunt tapestry needle, cable needle

SIZES

Adult Small/Medium (Adult Large)

Larger size is .5" deeper and fits 23-24" head sizes, or fully covers ears of Adult Small/Medium

FINISHED DIMENSIONS

21" circumference; 7.5" (8") deep

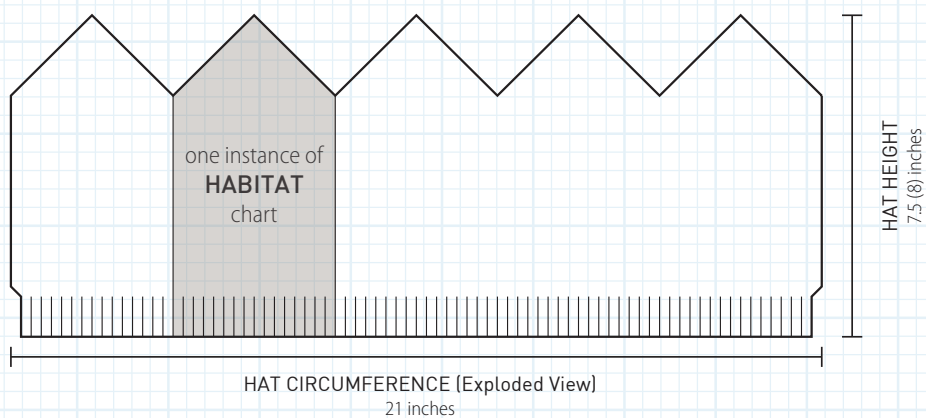
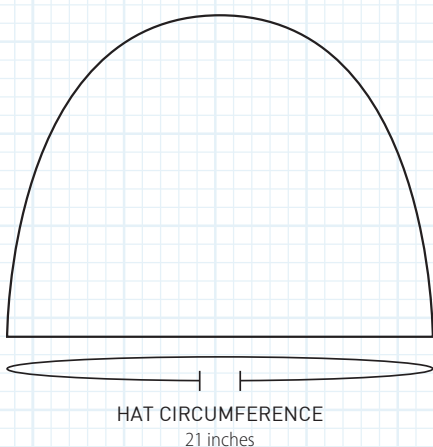


SKILL LEVEL



SCHEMATIC

The hat schematic is shown below in Regular and Exploded View. While the hat is worked in the round, the exploded view is provided to demonstrate the distribution of Chart Repeats around the total circumference. The shaded portion in Exploded View represents one instance of the Habitat Chart, which repeats itself 5 times per round. Crown shaping also occurs in 5 sections.



PATTERN

With smaller circular needle, using the Long-Tail Method, **cast on 90 stitches**. Place marker and join work into the round, being careful not to twist your ring of stitches.

ROUND 1 *Knit 2, purl 1; Repeat from * around.

Repeat previous round, establishing 2x1 ribbing, until work measures 1" from cast-on edge.

INC ROUND *Knit 2, make 1, purl 1; Repeat from * around until 3 stitches remain in round. Knit 2, make 1, slip last stitch of round from L to R needle, remove marker, return slipped stitch to L needle, replace marker. This marks the new beginning of your round.

You will now have **120 stitches** on your needle.

Switch to larger circular and **work rounds 1-4 (1-8) of Chart A (B)**.

NOTES All charts are 24-stitch motifs that are repeated 5 times per round.

Work rounds 1-40 of Chart C one time, switching to DPNs when necessary.

NOTES Marker placement will change at the ends of rounds 21, 30, 32 and 34 of Chart C (these rounds have been marked with an asterisk). See below for instructions for these specific rounds.

ROUND 21 Work as directed by chart until 2 stitches remain in round. Slip 2 stitches from L to R needle, remove marker, return 2 stitches to L needle, replace marker. This indicates the new beginning-of-round.

ROUNDS 30, 32, 34 Work as directed by chart until you reach end of round. Remove marker, slip one stitch from L to R needle, replace marker. This indicates the new beginning-of-round.

After completion of Round 40 you will have **20 stitches on your needles**.

NEXT ROUND Remove marker, slip 1 from L to R needle, replace marker, SSK 10 times around.

You will now have **10 stitches on your needles**.

Break your yarn, leaving a 6" tail. Using a tapestry needle, thread yarn tail through remaining 10 stitches. Pull snugly to close top of crown.

Weave in all ends invisibly on the WS of fabric.

FINISHING

Wet- or Steam-block your finished hat for best results.



HABITAT CHARTS

CHART A

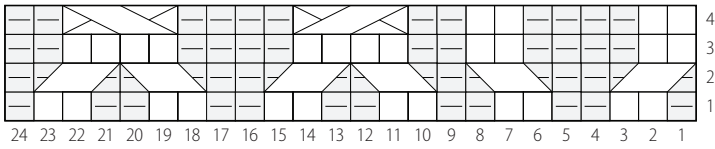


CHART B

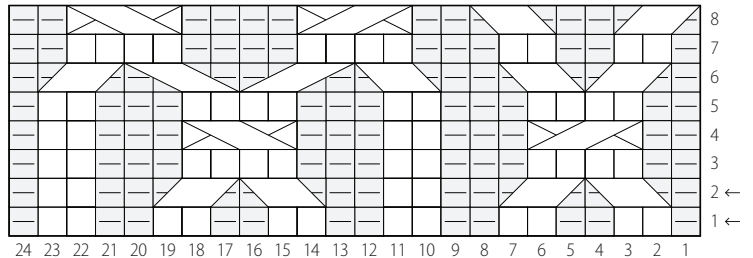
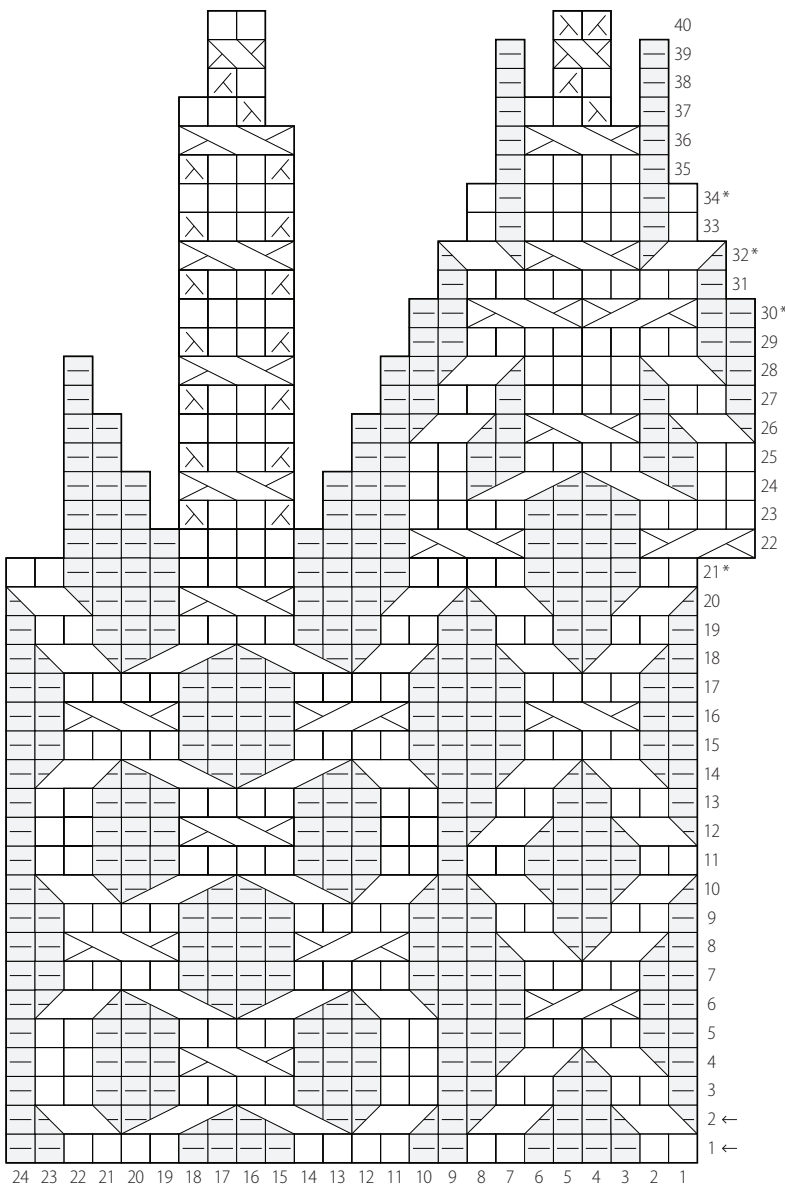






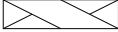
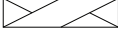
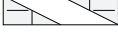
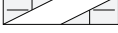



CHART C



LEGEND

-  Knit
-  Purl
-  K2tog: Knit 2 Together (Right-Leaning Decrease)
-  SSK: Slip, Slip, Knit (Left-Leaning Decrease)
-  C3Lp: Slip 2 stitches to CN and *hold in front*, purl 1, knit 2 from CN
-  C3Rp: Slip 1 stitch to CN and *hold in back*, knit 2, purl 1 from CN
-  C4L: Slip 2 stitches to CN and *hold in front*, knit 2, knit 2 from CN
-  C4R: Slip 2 stitches to CN and *hold in back*, knit 2, knit 2 from CN
-  C4Lp: Slip 2 stitches to CN and *hold in front*, purl 2, knit 2 from CN
-  C4Rp: Slip 2 stitches to CN and *hold in back*, knit 2, purl 2 from CN
-  Left Twist: Slip 1 stitch to CN and *hold in front*, knit 1, knit 1 from CN