



# NINIAN

CABLED BEANIE AND TAM  
by Jared Flood



# BLUEPRINT // NINIAN

## MATERIALS

Approximately 115 (150) yards of worsted-weight wool yarn  
1 (2) skeins of Brooklyn Tweed *Shelter* (100% American Targhee-Columbia Wool; 50g/140 yards)  
Samples shown in "Embers" (Tam), "Sap", & "Pumpnickel" (Beanie)

## GAUGE

4½ (5¼) stitches & 7 (8) rows = 1" in Stockinette with Gauge Needle  
6 (5¼) stitches & 8 (7) rows = 1" over Cabled Pattern with Gauge Needle, relaxed after blocking (Tam Version is stretched more thoroughly during blocking than Beanie Version)

## NEEDLES

Gauge Needle: one 16" circular and one set of DPNs in size needed to obtain gauge listed above  
One 16" circular needle two sizes smaller than Gauge Needle.  
Suggested sizes:  
Beanie: US 8 (5 mm) and US 6 (4mm)  
Tam: US 6 (4.5 mm) and US 4 (3.5 mm)

## SIZES

Adult Beanie (Tam); both styles fit 20-24" head circumference

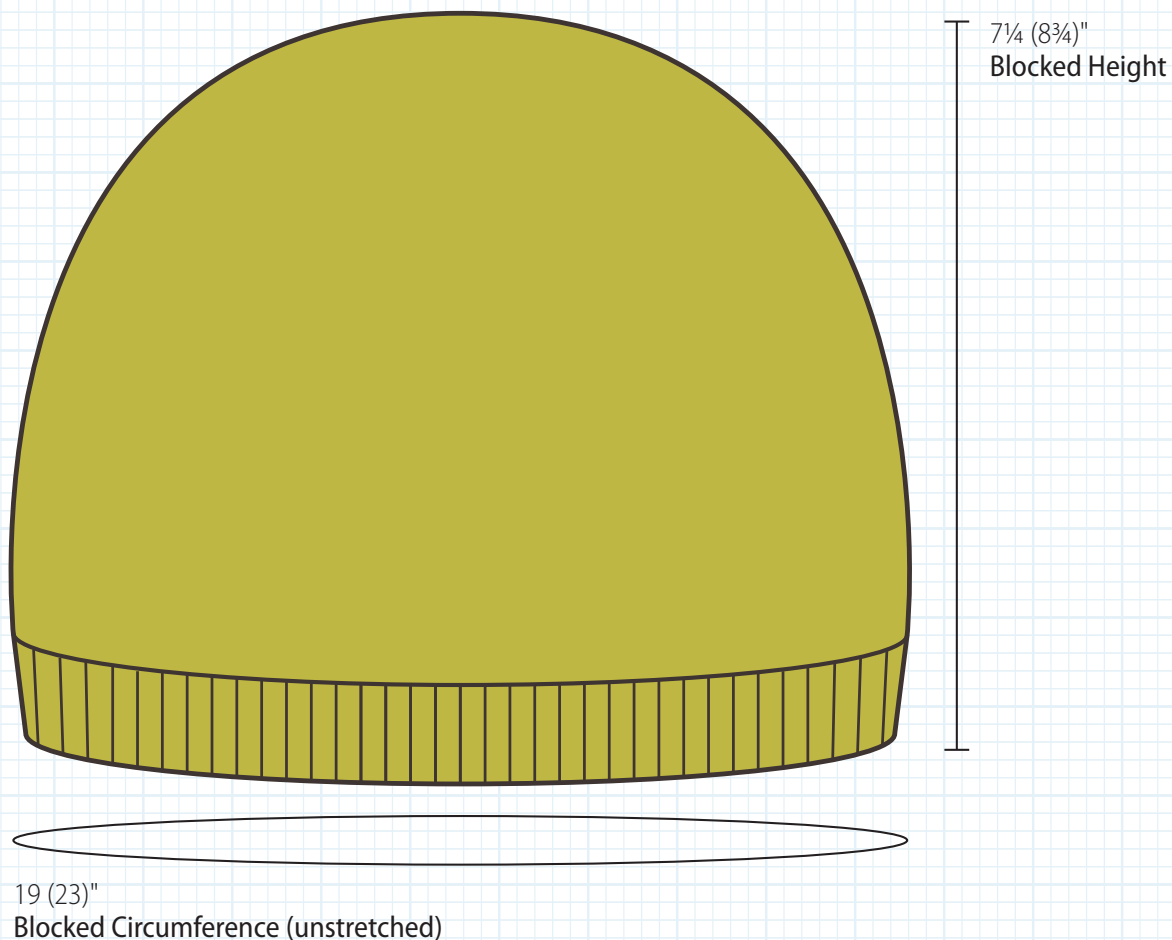
## FINISHED DIMENSIONS

19 (23)" circumference at widest point, relaxed after blocking  
7¼ (8¾)" height from base of ribbing to top of crown, after blocking

## TOOLS

Cable needle (CN), stitch markers, blunt tapestry needle

## SKILL LEVEL



## NINIAN

This hat pattern includes two versions: a larger Tam with a flat crown and cable-ribbed brim, and a more snug-fitting Beanie with a standard ribbed brim. Follow the instructions below for your chosen version, noting that each version has its own individual chart. The cabled stitch pattern adorning the main portion of this piece changes its total stitch count as it is being worked, which accounts for the especially squishy and textural fabric.

### BEANIE VERSION

With smaller circular needle, cast on 90 stitches using the Long-Tail Method. Place a marker and join work into the round, being careful not to twist your ring of stitches.

**Round 1:** \*Purl 3, knit 2; repeat from \* to end of round.

Repeat last round, establishing 3x2 rib, until hat measures 1.5" from cast on edge.

Switch to larger circular needle and work the following increase round as follows:

**Increase Round:** \*Purl 2, purl into the front and back of next stitch, knit 2; repeat from \* until 5 stitches remain in round, purl 2, purl into front and back of next stitch, knit 1. Slip last stitch of round to R needle, remove marker, replace slipped stitch back on L needle, replace marker. This indicates the new beginning-of-round. (18 stitches increased)

*You now have 108 stitches on your needle.*

Work Rounds 1-40 of Beanie Chart.

#### Chart Notes

- Crown shaping is written into chart. Switch to DPNs when necessary as you begin decreasing for crown.
- The chart begins as an 18-stitch motif and repeats itself 6 times per round.
- Beginning-of-round marker will change placement at the end of Rounds 13, 18, 20, 26 & 28 of Beanie Chart. These rounds are marked with an asterisk (\*) on chart. Follow special instructions below for working these rounds.

**Round 13:** Work as directed by pattern to end of round. Remove marker and slip one stitch from L to R needle. Replace marker. This indicates new beginning-of-round.

**Rounds 18 & 20:** Work as directed by pattern to end of round. Remove marker and slip two stitches from L to R needle. Replace marker. This indicates new beginning-of-round.

**Round 26:** Work as directed by pattern until 2 stitches remain. Slip one stitch from L needle to CN. Slip next stitch from L needle to R needle. Remove marker. Replace stitch from CN onto L needle. Replace 1st stitch on R needle to L needle. Replace marker. This indicates new beginning-of-round.

**Round 28:** Work as directed by pattern until two stitches remain in round. Slip last 2 stitches from L to R needle and remove marker. Replace slipped stitches back on L needle and replace marker. This indicates the new beginning-of-round.

*After completion of last round of chart, you will have 18 stitches on your needle.*

Break yarn, leaving a 6" tail. Using a blunt tapestry needle, thread yarn tail through remaining live stitches and pull snugly to close top of crown.



## TAM VERSION

With smaller circular needle, cast on 84 stitches using the Provisional Method. Place a marker and join work into the round, being careful not to twist your ring of stitches.

**Round 1:** \*Knit 2, purl 2; repeat from \* to end of round.

**Round 2:** \*LT (see abbreviations on page 6), purl 2; repeat from \* to end of round.

Repeat last two rounds, establishing 2x2 cabled rib, twice more.

Switch to larger circular needle and work the next two increase rounds as follows:

**Increase Round 1:** \*Knit 1, knit into the front and back of next stitch (heretafter called "KFB"), purl 2; repeat from \* to end of round. *21 stitches have been increased.*

**Increase Round 2:** \*LT, purl 2, purl into the front and back of next stitch; repeat from \* to end of round. *21 more stitches have been increased.*

*You now have 126 stitches on your needle.*

Work Rounds 1-48 of Tam Chart.

### Chart Notes

- Crown shaping is written into chart. Switch to DPNs when necessary as you begin decreasing for crown.
- The chart begins as an 18-stitch motif and is repeated 7 times per round.
- Beginning-of-round marker will change placement at the end of Rounds 2, 5, 8, 21, 26, 28, 34, & 36 of Tam Chart. These rounds are marked with an asterisk (\*) on chart. Follow special instructions below for working these rounds.

**Rounds 2 & 36:** Work as directed by pattern until two stitches remain in round. Slip last 2 stitches from L to R needle and remove marker. Replace slipped stitches back on L needle and replace marker. This indicates the new beginning-of-round.

**Rounds 5 & 21:** Work as directed by pattern to end of round. Remove marker and slip one stitch from L to R needle. Replace marker. This indicates new beginning-of-round.

**Round 9:** Work as directed by pattern until two stitches remain in round. Slip the 1<sup>st</sup> stitch on L needle to Cable Needle (CN). Knit next stitch from L needle. KFB into stitch on CN. Remove marker, slip two stitches on R needle (those stitches from the KFB) back to L needle. Replace marker. Slip both (KFB) stitches back to R needle. You will now begin working the next round, having already worked the first KFB of next round.

**Rounds 26 & 28:** Work as directed by pattern to end of round. Remove marker and slip two stitches from L to R needle. Replace marker. This indicates new beginning-of-round.

**Round 34:** Work as directed by pattern until 2 stitches remain. Slip one stitch from L needle to CN. Slip next stitch from L needle to R needle. Remove marker. Replace stitch from CN onto L needle. Replace 1st stitch on R needle to L needle. Replace marker. This indicates new beginning-of-round.

*After completion of last round of chart, you will have 21 stitches on your needle.*

Break yarn, leaving a 6" tail. Using a blunt tapestry needle, thread yarn tail through remaining live stitches and pull snugly to close top of crown.



## FINISHING

Wet-block finished hat as follows: Fill a sink with warm water, adding a small amount of rinseless wool wash. Submerge finished piece in water, gently squeezing out any air bubbles from fabric. Hat should be able to stay under water without being held there. Soak work for 10 to 15 minutes.

Drain sink and squeeze out excess water (do not wring or twist fabric). Roll your wet fabric between two clean towels burrito-style and stomp on towel roll. This will aid in removing excessive moisture from your fabric. Unroll towels and remove work. Your fabric should feel damp but not saturated.

## BEANIE VERSION

Lay work flat on a clean, moisture-proof surface to dry. To avoid blocking creases into your fabric, rotate your work every 2 to 3 hours, changing the position of the crease line while hat is drying.

## TAM VERSION

Carefully stretch cabled portion of tam over a dinner plate or other circular form (approximately 10" in diameter) being sure not to stretch ribbing at base. Flatten and smooth crown to best display motif.

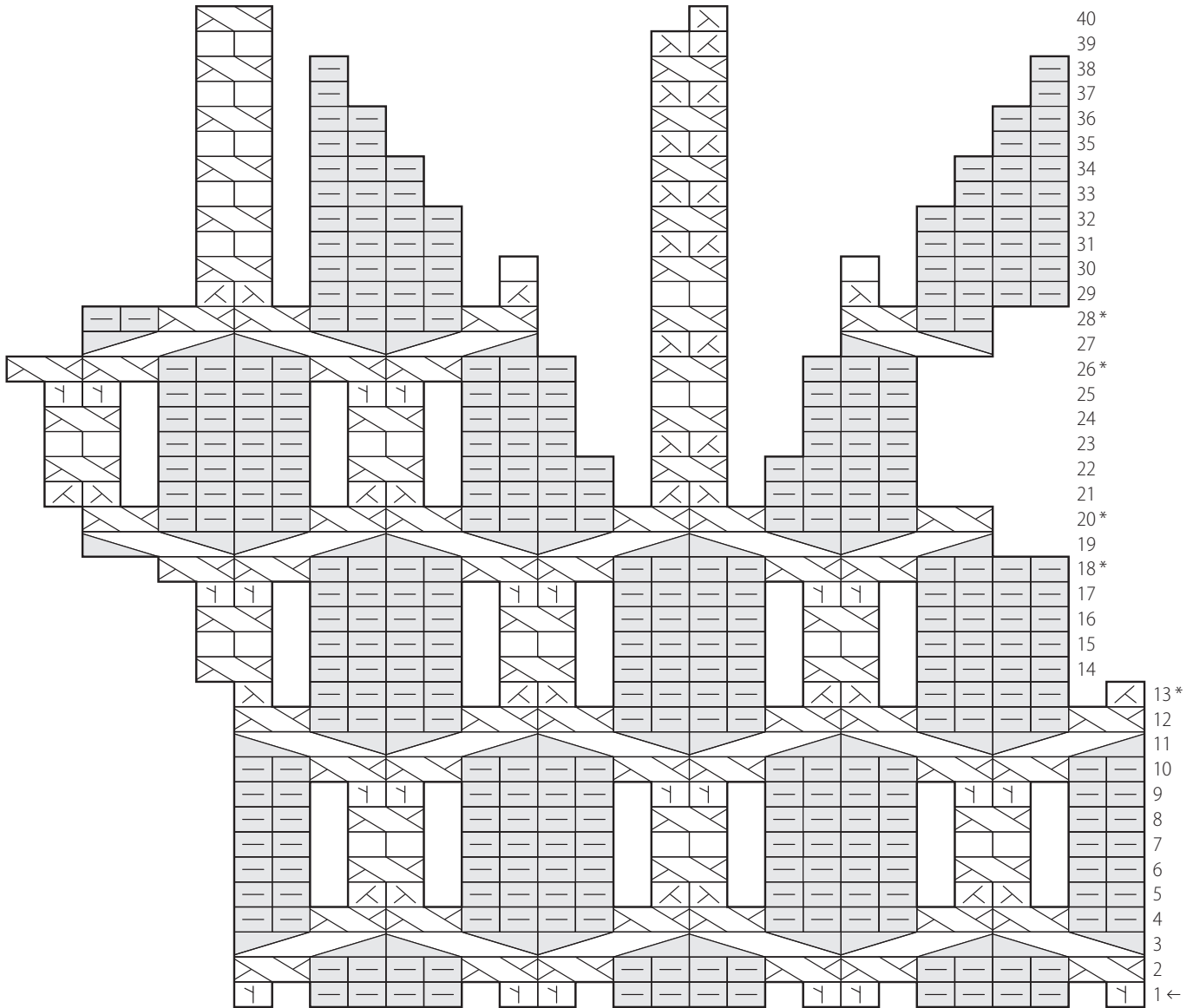
## BOTH VERSIONS

Air dry, then weave in all remaining ends invisibly on WS of fabric.



# BEANIE CHART

The following chart is worked for Beanie Version only. This chart is repeated 6 times per round. All odd- and even-numbered rows are worked from right to left. Beginning-of-round marker placement changes at the end of Rounds 13, 18, 20, 26, & 28 (these rounds are marked with an asterisk). For special instructions on these rounds, refer to written instructions for Beanie Version.




 **KNIT** Knit stitch

 **PURL** Purl stitch


 **C4Lp** Slip 2 stitches to CN and *hold in front*. Purl 2 stitches from L needle. Knit 2 stitches from CN

 **C4Rp** Slip 2 stitches to CN and *hold in back*. Knit 2 stitches from L needle. Purl 2 stitches from CN

 **LT** Slip 1 stitch to CN and *hold in front*. Knit 1 stitch from L needle. Knit stitch from CN

 **KFB** Knit into the front and back of same stitch (1 stitch increased)

 **K2TOG** Knit two stitches together (Right-Leaning Decrease)

 **SSK** Slip 1 stitch from L to R needle as if to knit, replace this stitch on L needle in its new orientation and knit two together through the back loop (Left-Leaning Decrease)

# TAM CHART

The following chart is worked for Tam Version only. This chart is repeated 7 times per round. All odd- and even-numbered rows are worked from right to left. Beginning-of-round marker placement changes at the end of Rounds 2, 5, 8, 21, 26, 28, 34, & 36 (these rounds are marked with an asterisk). For special instructions on these rounds, refer to written instructions for Tam Version. *Symbol legend can be found on preceding page.*

