

# OMNI II

## TOUCH SCREEN PATIENT MONITOR



### ECG, SPO<sub>2</sub>, NIBP, HR, TEMP, RESP.

- 12.1" color TFT display with touch screen.
- Multi-lead ECG monitoring.
- Touch screen user interface.
- Built-in battery.
- NIBP list display.
- Built-in thermal recorder.
- Large font display with 4, 6 and 8 waveforms shown.
- Networkable with Central Monitoring System via a wireless or wired network.
- Compact design is convenient for mobile monitoring.
- Multi-lingual settings.
- 48 hours trend data analysis.
- OPTIONAL: Dual IBP, EtCO<sub>2</sub>, Battery, Recorder.



Advanced, Affordable Medical Technology For The World

# OMNI II TECHNICAL SPECIFICATIONS

## Physical Dimensions & Weight

### Main Unit

Dimension: 555mm H x 335mm W x 235mm D  
Weight: 5kg

### Application

Neonatal, pediatric and adult patients

### Operation Environment

#### Power

Source: External AC power or internal battery  
AC Power: 100-240VAC, 50/60Hz, <150VA  
Battery: Rechargeable Lead-Acid  
Operating time under the normal condition: 1 hour  
Operating time after the first alarm of low battery: 10 mines

#### Temperature

Working: 5-40C  
Storage: -20-65C

#### Relative Humidity

Working: 30-75%  
Storage: ≤80%

#### Altitude

Operating Altitude: Up to 5,000 meters  
Hyperbaric Pressure: Up to 405.3 kPa

## Performance Specifications

Display: 12.1" color TFT, Touch Screen  
Resolution: 800 x 600 pixels  
Trace: 4, 6 or 8 waveforms  
ECG (I, II, III, aVR, aVL, aVF, V1-V6), PLETH, RESP, IBPx2, ETCO2  
Indicator: Alarm indicator  
Power indicator  
QRS beep and alarm sound  
Trend time: 48 hours  
Recorder: Built-in, thermal array, 2 channels  
Record width: 48mm  
Recorder paper: 50mm  
Record speed: 25mm/s, 50mm/s

### ECG

Input: 5-lead ECG cable and standard AAMI line for connection  
Lead Choice: I, II, III, aVR, aVL, aV, V  
Gain Choice: x0.5, x1.0, x2.0  
Frequency Characteristic: 0.05-40 Hz  
ECG Waveforms: 7 channels  
Penetration Voltage: 4000VAC 50/60Hz  
Sweep Speed: 12.5, 25 and 50 mm/s  
HR Display Range: 30-300bpm  
Accuracy: ±1% or ±1bpm, whichever is greater

### ECG (cont.)

Alarm Limit Range Setting  
Upper limit: 80-400bpm  
Lower limit: 20-150bpm

### RESP

Measuring Method: RA-LL impedance  
Range: 0-120 rpm  
Accuracy: + 3 rpm  
Alarm Upper-lower Limit Setting:  
Upper limit: 6-120 rpm,  
Lower limit: 3-120 rpm  
Sweep Speed: 12.5 and 25 mm/s

### NIBP

Measuring Technology: Automatic oscillating measurement  
Cuff Inflating: <30s-0-300 mmHg, standard adult cuff  
Measuring Period: AVE<40s  
Mode: Manual, Auto, STAT  
Measuring Interval in AUTO Mode: 2 min-4 hrs  
Pulse Rate Range: 30-250 (bpm)  
Measuring Range: Adult/Pediatric Mode  
SYS 40-250 (mmHg)  
DIA 15-200 (mmHg)  
Neonatal Mode  
SYS 40-135 (mmHg)  
DIA 15-100 (mmHg)  
Resolution: 1mmHg  
Accuracy: Pressure  
Maximum Mean error: ±5mmHg  
Maximum Standard deviation: 8mmHg  
Overpressure Protection:  
Adult Mode 280(mmHg)  
Neonatal Mode 150 (mmHg)  
Alarm Limit Setting  
SYS 50-240 mmHg  
DIA 15-180 mmHg

### TEMP

Range: 25-50C  
Accuracy: + 0.2C 25.0-34.9C  
+ 0.1C 35.0-39.9C  
+ 0.2C 40.0-44.9C  
+ 0.3C 45.0-50.0C  
Display Resolution: 0.1C  
Alarm Upper-lower Limit Setting:  
Upper limit 0-50C  
Lower limit 0-50C  
Channel: 2 channels  
Alarm Limit Setting: 10-50C

### SPO2

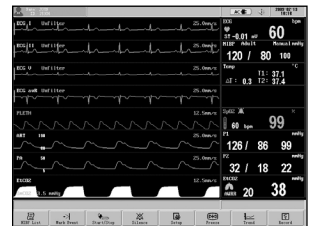
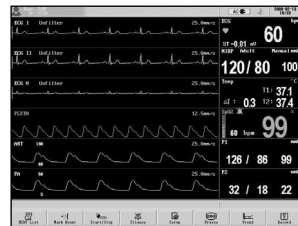
ASpO2: Anti-motion SpO2  
SpO2% Range: 0-100%  
SpO2 Accuracy: + 2% 70-100%, non-motion  
+ 3% 70-100%, motion  
Pulse Rate Range: 30-250 bpm  
Pulse Rate Accuracy: ±2 bpm (non-motion)  
±3 bpm (motion)  
Alarm Upper-lower Limit Setting:  
upper limit 70-100%  
lower limit 70-100%  
SpO2 Probe  
Red light LED wavelength 660nm±5nm  
Infrared light LED wavelength 940nm±10nm  
**IBP (OPTION)**  
Measurement Range: -10-300mmHg  
Channel: 2 channels  
Pressure transducer: sensitivity, 5µV/V/mmHg  
Impedance range: 300-3000Ω  
Transducer sites: ART, PA, CVP, RAP, LAP, ICP  
Resolution: 1mmHg  
Accuracy: ±1mmHg or ±2%, whichever is greater  
Alarm range: -10-300mmHg

### EiCO2 (OPTION)

Mode of Sampling: Sidestream  
Principle of Operation: Non-dispersive infrared (NDIR) single beam optics, dual wavelength, no moving parts.  
CO2 measurement Range: 0 to 150 mmHg (0 to 19.7%, 0 to 20 kPa)  
CO2 Calculation Method: BTPS (Body Temperature Pressure Saturated)  
CO2 Resolution: 0.1mmHg(0-69mmHg), 0.25mmHg(70-150mmHg)  
CO2 Accuracy: 0-40 mmHg ± 2 mmHg  
41-70 mmHg ± 5% of reading  
71-100 mmHg ± 8% of reading  
101-150 mmHg ± 10% of reading  
Above 80 breath per minute ± 12% of reading  
Sampling rate: 100Hz  
Respiration Rate: 2-150 bpm  
Respiration Rate accuracy: ±1 breath  
Response Time: <3 seconds - includes transport time and rise time  
Inspired CO2 measurement Range: 3-50 mmHg  
Specifications subject to change without notice.

## Selectable Screens:

4, 6, or 8 waveforms



Authorized Distributor:



12151 62nd St N #5 • Largo FL 33773 • USA

Phone: (1) 727-531-8434 • Fax: (1) 727-531-8436

Web: [www.infiniummedical.com](http://www.infiniummedical.com) • Email: [sales@infiniummedical.com](mailto:sales@infiniummedical.com)