



GORYOVINA
고 려 베 트 남





CONTENTS

- 1 C.E.O GREETING
- 2 INTRODUCTION
- 3 HISTORY AND SCALE
- 4 EQUIPMENT
- 5 CLIENTS
- 6 PORTPOLIO
- 7 ADDRESS

1. GREETING



Goryo Precision was founded in 1984 as a company specializing in exact mechanics. We can provide various types of mock-up products such as electronic device, car accessory and industrial equipment.

To satisfy all customer demands, our company is equipped with modern machinery and high-level employees with many years of experience.

With the history of making mock-up for 30 years; whatever accessory and component, we will satisfy the needs of your company. Moreover, we always try our best to apply new technology to improve the product quality and time consuming.

Once again, we would like to say thank to all of the customers for your trust and we promise that we will try our best to supply you with an excellent product as you desire.



2. INTRODUCTION



HQ/FACTORY: 119-20 Sasa-Dong, Sangnok-Gu, Ansan-City,
Gyeonggi-Do, Korea
TEL 82 - 31 - 415 -6191 ~ 5
FAX 82 - 31 - 415 - 6196
Mail g0806@unitel.co.kr



HQ/FACTORY: Lot 44D, Quang Minh IZ, Chi Dong Town,
Me Linh District, Hanoi, Vietnam
TEL (84) 04 - 3718 3892
HOTLINE (84) 089858 1900
Mail master@goryovina.com

3. HISTORY AND SCALE



1984

1984. 03 Founded Goryo Jeongmil
(Founded factory specializing in metal sign mockup).

1994

1988. 04 Changed the brand into Goryo Precision

1993. 05 Moved to Shihwa IZ factory (land area of 2050m2,
total area of 1190m2)

1994. 05 Additionally built factory

1994. 12 Recruited small and medium-sized prospective enterprises

1994. 12 Completely built newly built factory and moved to
Gyeonggi-do Hwaseong (land area of 13,555m2)

1995

1995. 07 Founded Goryo Yanghaeng (Steel office furniture export to US).

2000

1998. 09 Nominated product quality certification
(Korea Testing & Research Institute)

1999. 03 Recruited small and medium-sized potentially elite enterprises
in Gyeonggi-do

2000. 06 Obtained **ISO 9001** certification

2000.06 Additionally built factory (land area of 1,650m2, total area of 1,650m2)

2007

2007. 06 Completely built newly built factory and moved to Gyeonggi-do Ansan-si

2008. 01 Additionally installed **LASER(TURBO –X48 MK II) 250W**

2009. 03 Recruited enterprise in bending

2009. 05 Oil Pressure Punching Machine (600 tons)

2010. 06 Obtained **ISO 9001& ISO14001** certifications

2011. 05 Additionally installed 3-dimentional theodolite (SHEFIELD) DISCOVERY III

2012

2011. 07 Founded project department **CAM**

2012. 01 Converted legal entity in Goryo Precision Joint Stock Company

2013. 03 Founded Representative Office of Goryo Precision in Hanoi

2014

2014. 10 Delegated Managing Director Lee Jin Man in Genesis,Goryo Precision.

2016

2016. 04 Founded Goryovina in Vietnam.

Date of establishment: 15.03.1984

Business Fields: Fabricating / outsourcing metal components
(MOCK-UP)

Location

Ansan Factory (Goryo Precision): Gyeonggi-do Ansan-si
Sangrok-gu,Sasa-dong 119-20, Korea

Hwaseong Factory (Genesis): Gyeonggi-do Hwaseong-si
Jangan-myeon Jangan-ri 264-9, Korea

Vietnam Factory (Goryovina): Lot 44D, Quang Minh IZ, Chi
Dong Town, Me Linh District, Hanoi, Vietnam

Factory size

Ansan Factory: Land area of 1,650 m2 / 2,597 m2 Building

Hwaseong Factory: Land area of 13,555 m2 / 6,542 m2 Building

Vietnam Factory: 600m2

Production capacity: 20 billion won per year

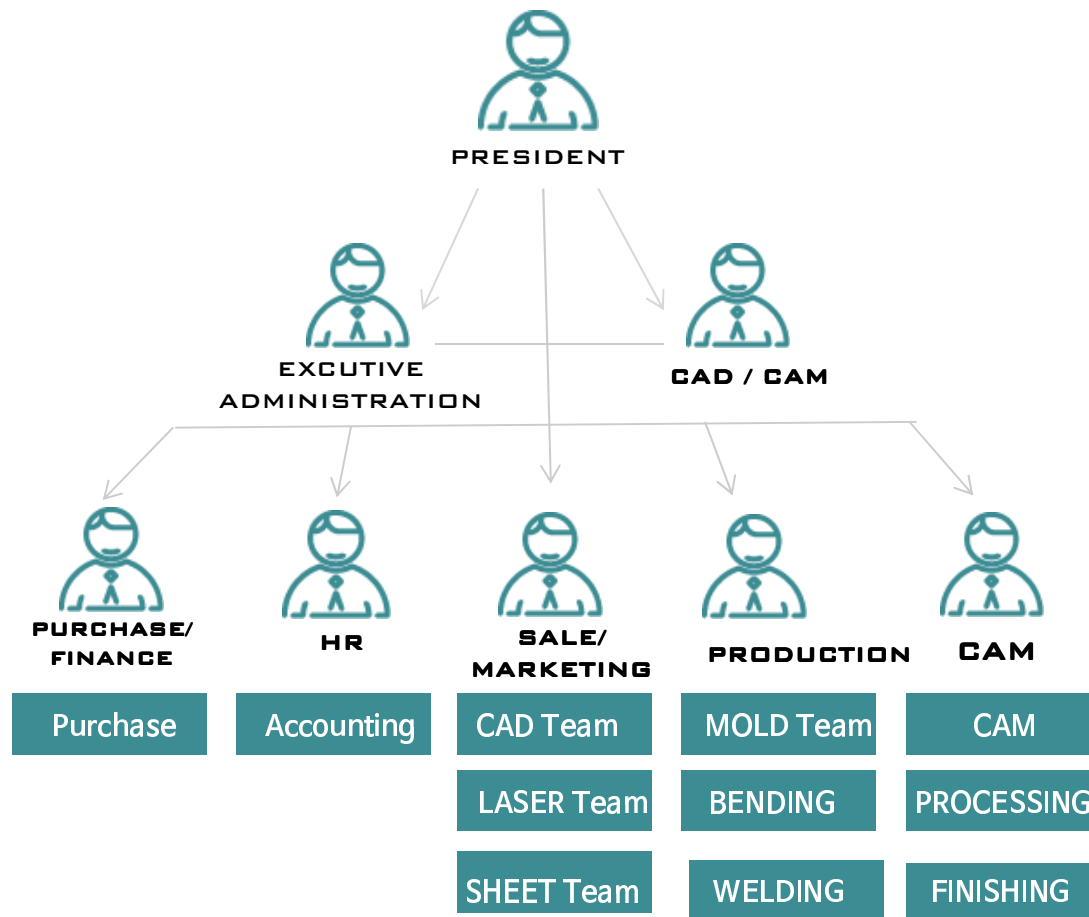
Product Categories

Ansan Factory: Electrical products/household appliances, auto
parts, industrial machinery, equipment and tools
(Punching machine / plastic production)

Hwaseong Factory: Office furnitures, ATM machines, metal
utensils

Vietnam Factory: Electrical products/household appliances, auto
parts, industrial machinery, equipment and tools (Punching
machine / plastic production), Coffee Roaster...

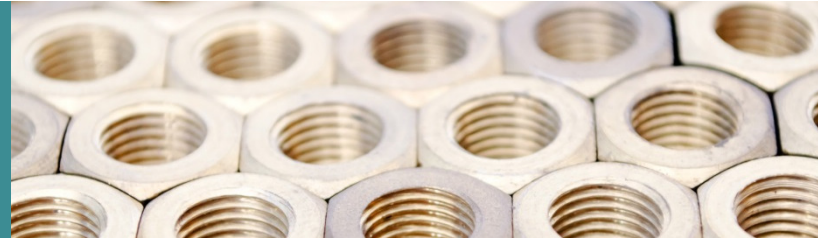
3 - 1 . COMPANY STRUCTION



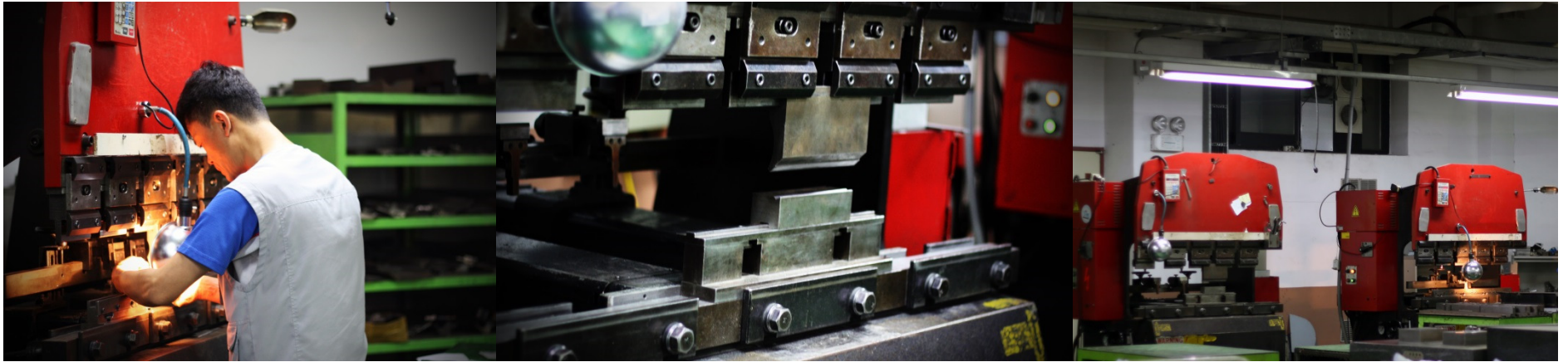
Hi Quality~!
Exact to
Delivery~!



3 -2 . COMPANY PHOTOS



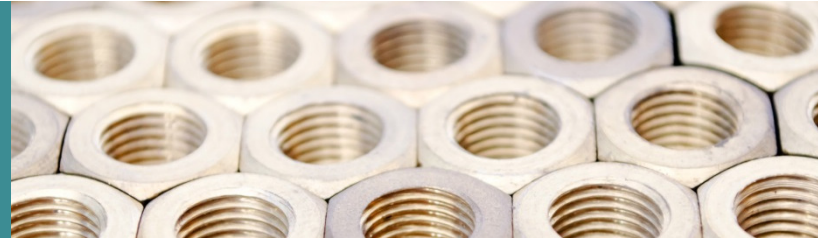
BENDING TEAM



LASER TEAM



3 -2 . COMPANY PHOTOS



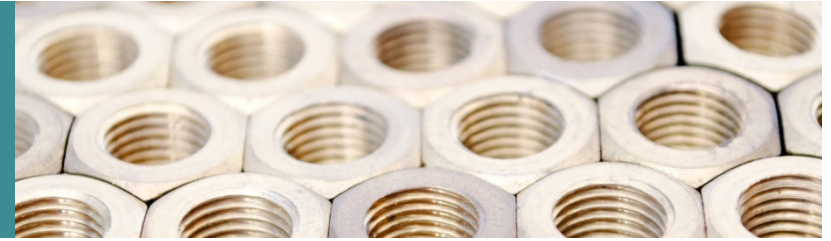
CAM TEAM



3-DIMENTIONAL THEODOLITE

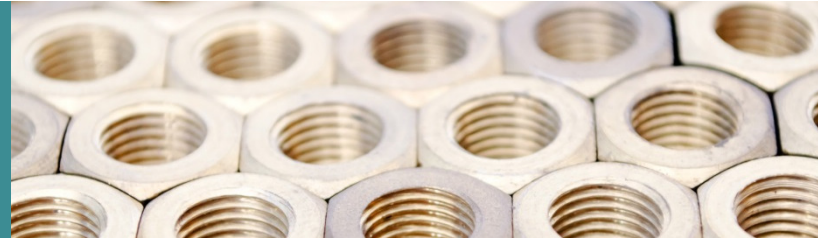


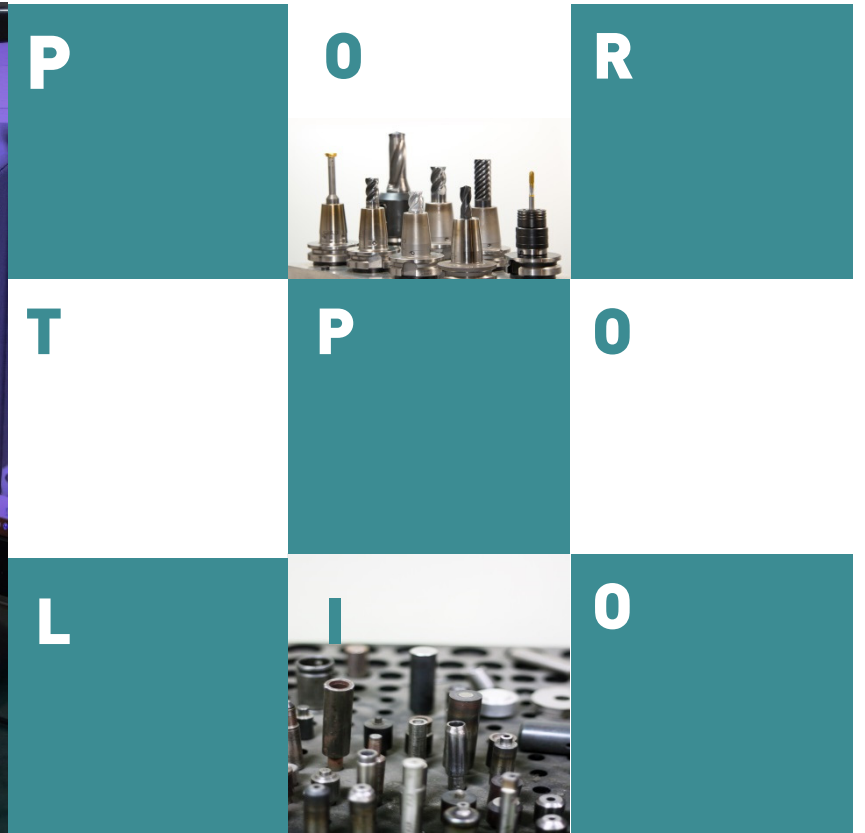
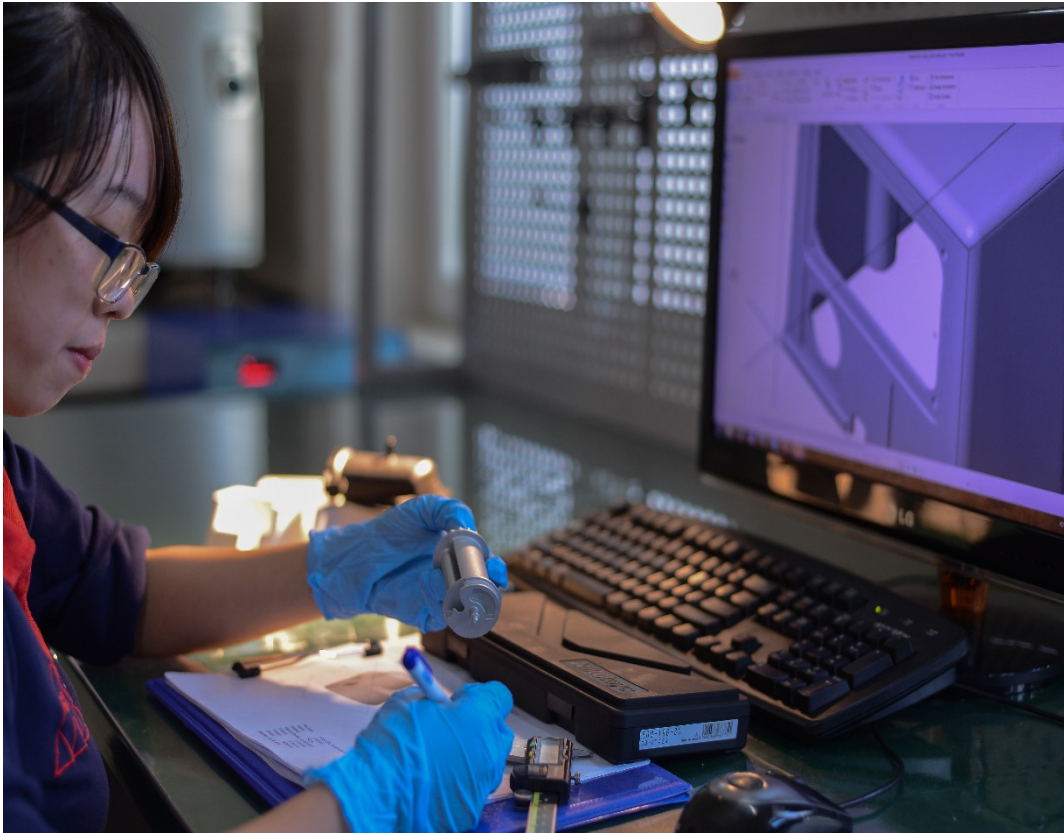
4. EQUIPMENT



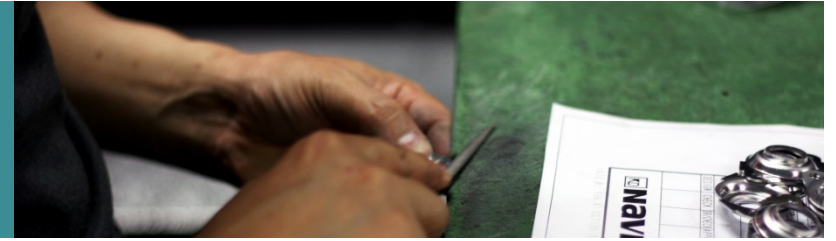
ITEM	TYPE	QUANTITY	ITEM	TYPE	QUANTITY
LASER CUTTING	250W	1	NC SHEARING M/C	RG100	1
	150W	1	MANUAL MILLING M/C		2
	D-28	1	MANUAL LATHE		1
OIL PRESS	600 tons	1	FORMING M/C		1
	300 tons	1	TABLE GRINDER		1
	150 tons	1	BAND CONTER	PV-300	1
AIR PRESS	250 tons	1	TABLE TAPPING M/C		2
	200 tons	2	TABLE DRILLING M/C		4
	160 tons	1	AIR SPOT WELDING	100KW	3
	110 tons	3	ARGON WELDING	350KW	2
	80 tons	3	CO2 WELDING		4
	50 tons	1	PORTABLE WELDING	100KW	1
POWER PRESS		3	CNC MCT	No. 6.5	2
M/T PRESS		2		No. 4	6
BENDING MACHINE		11			
NCT PUNCH PRESS	357HP	1			
	255HP	1			

5. CLIENT

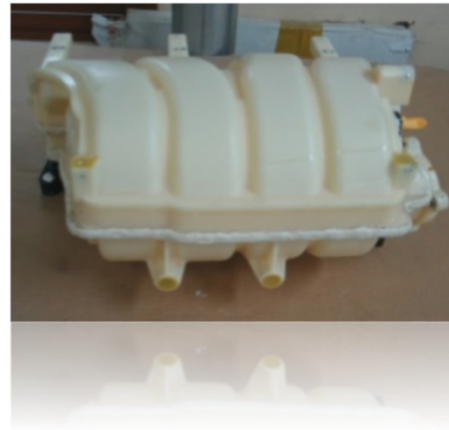




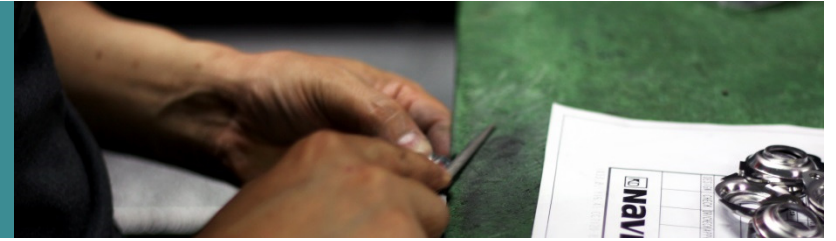
6. PORTPOLIO



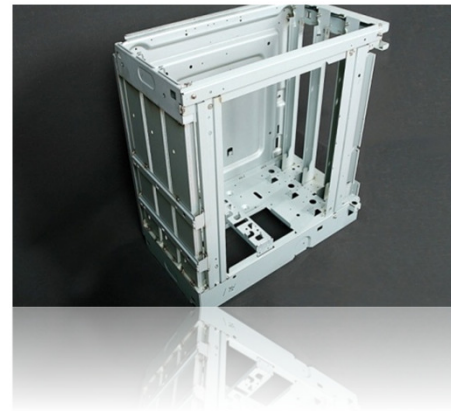
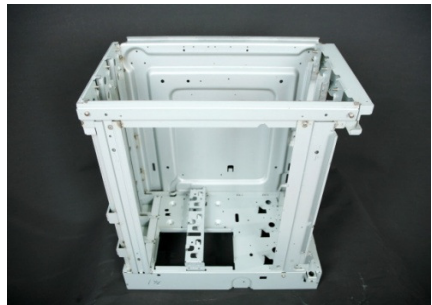
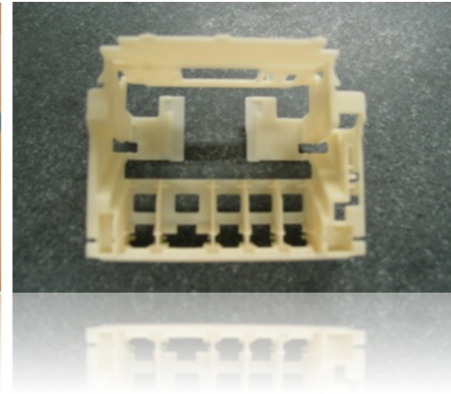
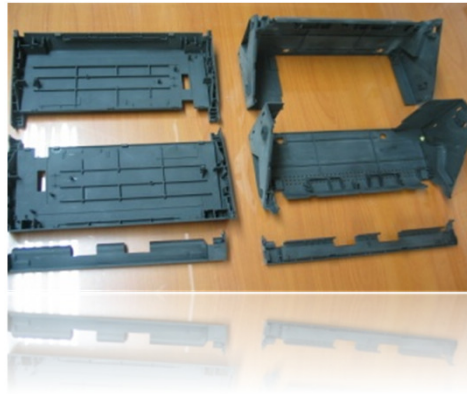
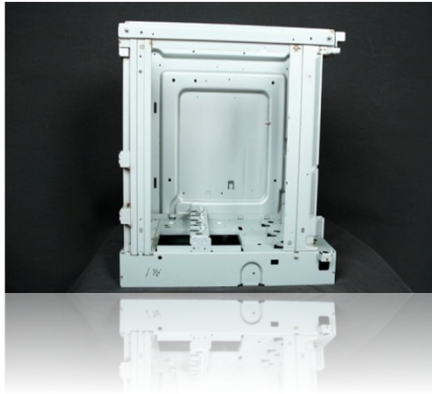
CAR PARTS



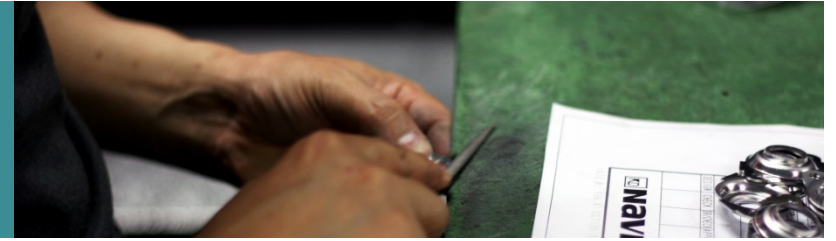
6. PORTFOLIO



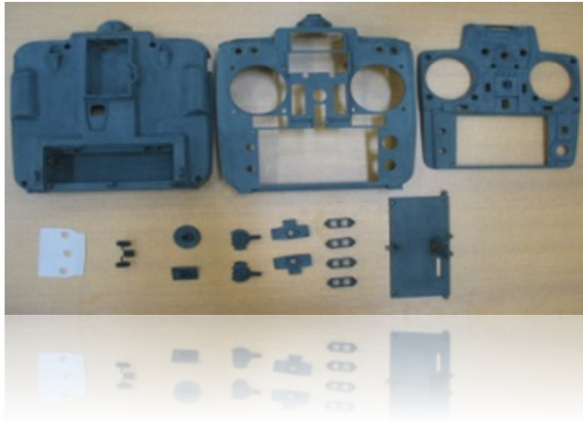
PRINTER PARTS



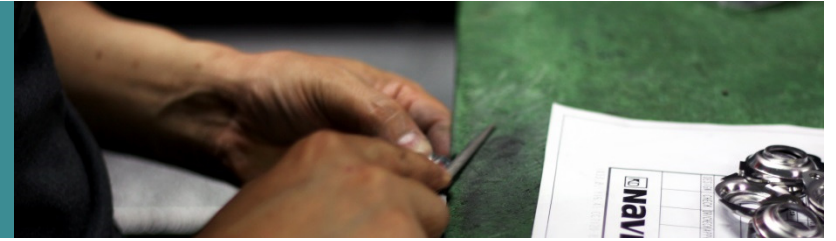
6. PORTFOLIO



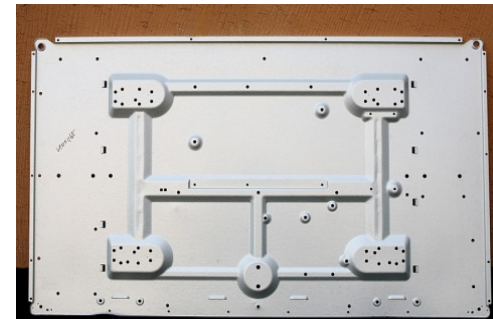
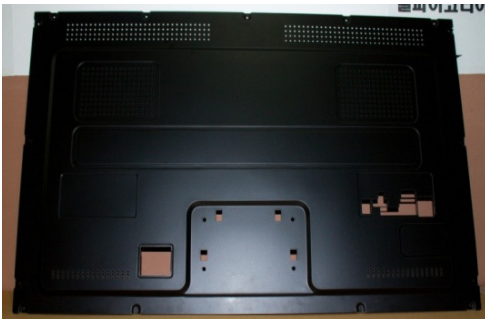
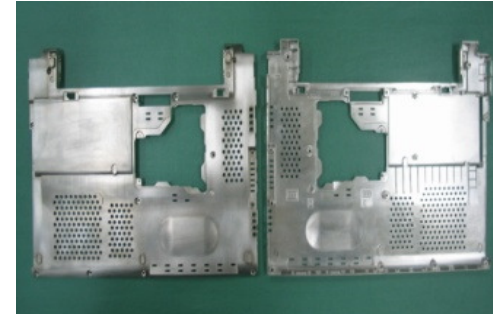
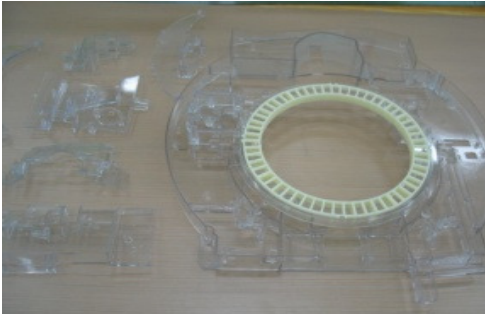
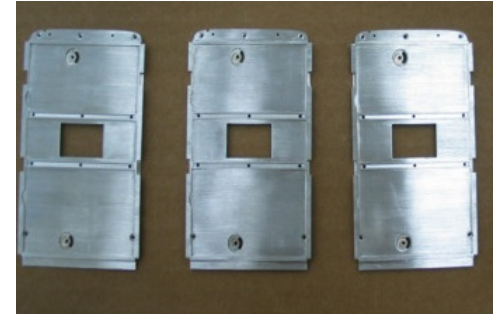
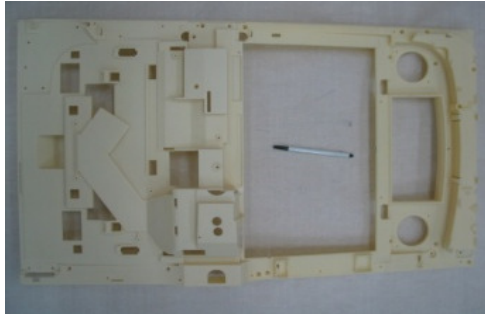
ELECTRONIC PRODUCTS



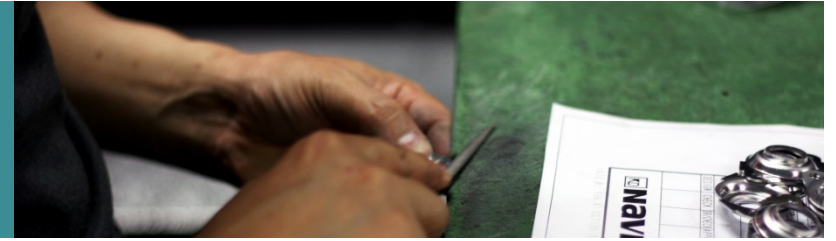
6. PORTFOLIO



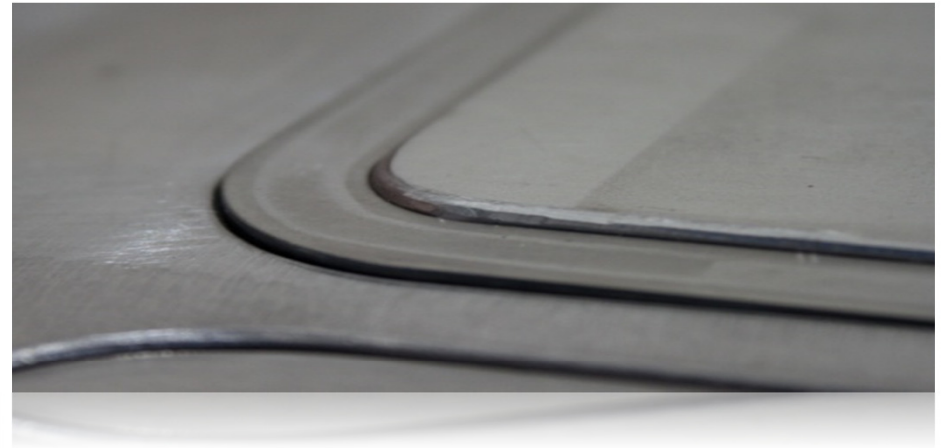
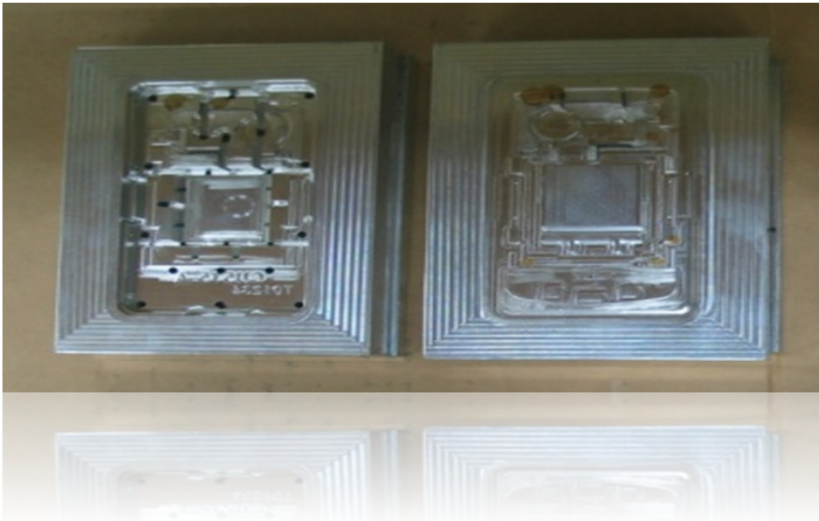
ELECTRONIC PRODUCTS



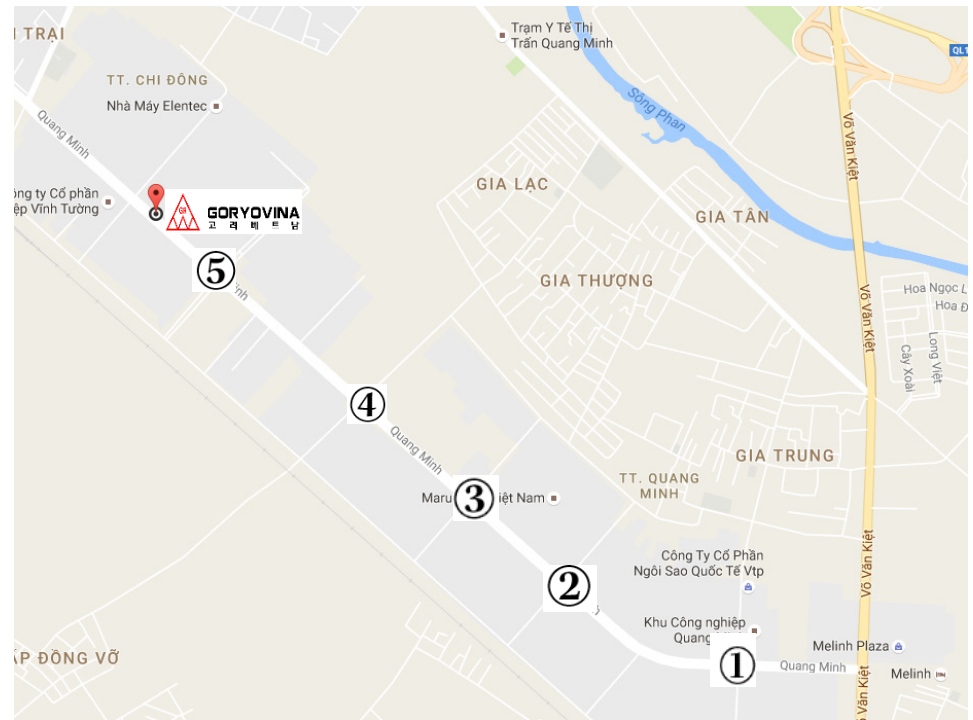
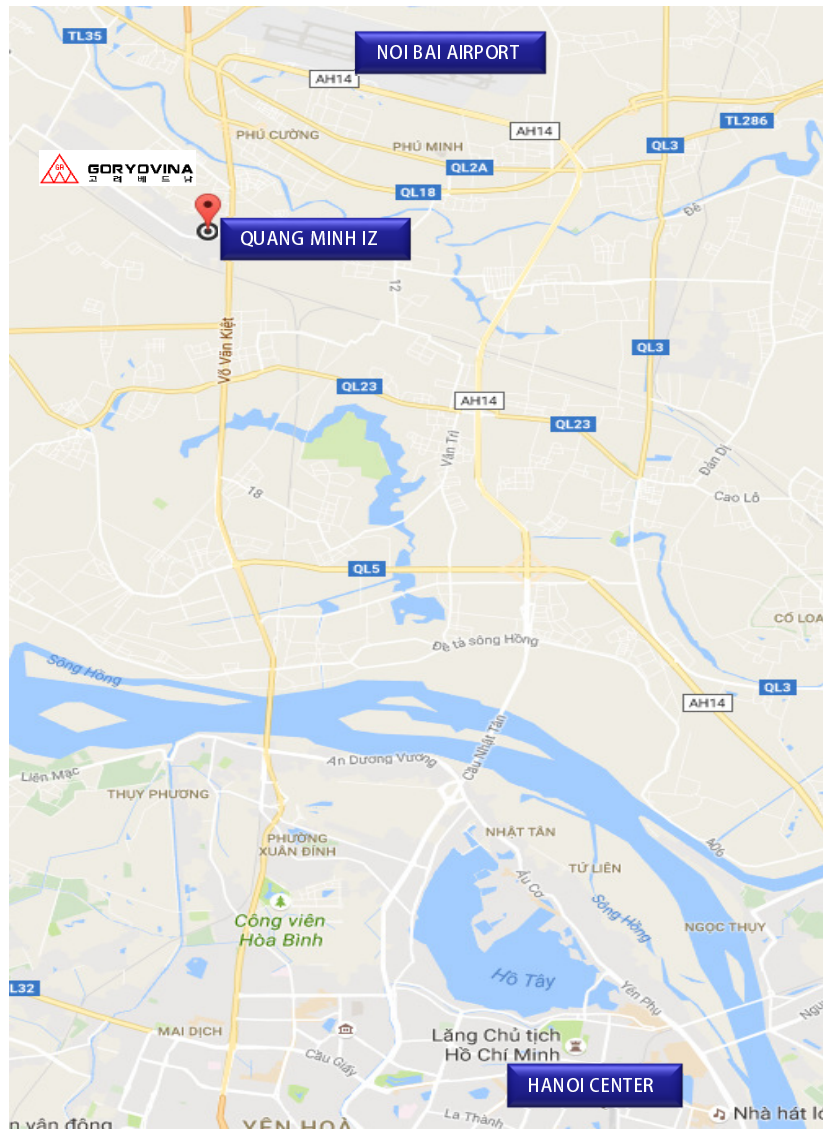
6. PORTPOLIO



QDM



7. ADDRESS



1. From Noibai Airport: Go toward Hanoi by Vo Van Kiet highway about 6.5km, Quang Minh IZ will appear (left the map)
2. Entrance to Quang Minh IZ, go straight
3. After passing the 5th crossroads about 100m, you can see Goryovina building in your right.

<http://www.goryovina.com>



GORYOVINA
고 려 베 트 남

Thank You!

