

Control Station and Control Panel: Control Station (Rectangular Shape), EPB/ EPL/ EPBL/ ESL/ EKS/ EEM series



A QUALITY PRODUCT

**Flameproof
Zone 1 & 2 – 22**

Application

The control stations are suitable for use in conjunction with magnetic contactors and relays for remote control of motors, also indicating the electrical function performed. They are suitable for zone 1, 2 and zone 22 areas.

Specification

- Body, cover : Marine grade copper-free aluminium alloy with polyester powder coated, RAL 7032 (Grey)
- Sealing gasket : Silicone -40 °C to +175 °C
- Lid screw : Stainless steel

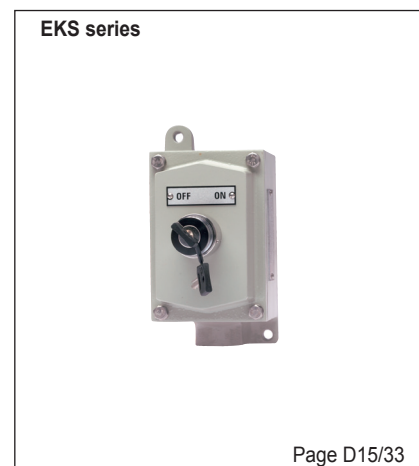
Rating

- Switch rating : AC 15 (inductive load) 3A./220V.
DC 12 (resistive load) 1.1A./220V.
Rated insulation voltage 600V.
Rated continuous current 10A.
- LED lamp rating : Transformer input 120, 220-230V.AC.
Direct 24V.DC.

Technical Data

Hazardous Area	Gas	Dust
Zones	1 & 2	22
Conforming to ATEX	II 2G	II 2D
Symbol of Protection ATEX	Ex db IIB Gb	Ex tc IIIC Dc
Symbol of Protection IEC		
T Rating	T6 (Ta = +40 °C/ +55 °C)	NA
Surface Temp.	NA	T85 °C (Ta = +40 °C/ +55 °C)
Standard	ATEX Directive 2014/34/EU, std. EN 60079-0:2012, EN 60079-1:2014, EN 60079-31:2014	
	IECEX Scheme, std. IEC 60079-0:2011, IEC 60079-1:2014, IEC 60079-31:2013	
Ambient Temperature	-20 °C to +55 °C	
Index of Protection	IP54	
Entries	Ø1/2" or Ø3/4" NPT	
Mounting	Wall type	

D



Control Station and Control Panel: Push Button, EPB series



Flameproof
Zone 1 & 2 – 22

Catalogue Number



Catalogue Number Logic

EPB **X** **X** - **XXX** - **XX**

Series Gang: Type: Contact per gang: Entries:

1 = Single gang none = Dead-end A = 1NO B = 1NC
2 = Two gangs C = Through-feed C = 1NO-1NC
3 = Three gangs D = 2NO E = 2NC
(Momentary function)

N1 = 1/2" NPT
N2 = 3/4" NPT
N3 = 1" NPT

Contact	Symbol	Entries Thread	Nameplate Marking	Cat. No.		Volume (dm ³)	Approx. Weight (kgs.)
				Dead-end (Bottom)	Through-feed		
Single Gang, 1PB							
1NO		Ø1/2" NPT Ø3/4" NPT	START or ON	EPB1-A-N1 EPB1-A-N2	EPB1C-A-N1 EPB1C-A-N2	0.32	1.95
1NC		Ø1/2" NPT Ø3/4" NPT	STOP or OFF	EPB1-B-N1 EPB1-B-N2	EPB1C-B-N1 EPB1C-B-N2	0.32	1.95
1NO - 1NC		Ø1/2" NPT Ø3/4" NPT	Specify	EPB1-C-N1 EPB1-C-N2	EPB1C-C-N1 EPB1C-C-N2	0.32	1.95
2NO		Ø1/2" NPT Ø3/4" NPT	START or ON	EPB1-D-N1 EPB1-D-N2	EPB1C-D-N1 EPB1C-D-N2	0.32	1.95
2NC		Ø1/2" NPT Ø3/4" NPT	STOP or OFF	EPB1-E-N1 EPB1-E-N2	EPB1C-E-N1 EPB1C-E-N2	0.32	1.95
Single Gang, 2PB							
1NO, 1NO		Ø1/2" NPT Ø3/4" NPT	Specify	EPB1-AA-N1 EPB1-AA-N2	EPB1C-AA-N1 EPB1C-AA-N2	0.32	1.95
1NC, 1NC		Ø1/2" NPT Ø3/4" NPT	Specify	EPB1-BB-N1 EPB1-BB-N2	EPB1C-BB-N1 EPB1C-BB-N2	0.32	1.95
1NO, 1NC		Ø1/2" NPT Ø3/4" NPT	START, STOP or ON, OFF	EPB1-AB-N1 EPB1-AB-N2	EPB1C-AB-N1 EPB1C-AB-N2	0.32	1.95
2NO, 2NO		Ø1/2" NPT Ø3/4" NPT	Specify	EPB1-DD-N1 EPB1-DD-N2	EPB1C-DD-N1 EPB1C-DD-N2	0.32	1.95
2NC, 2NC		Ø1/2" NPT Ø3/4" NPT	Specify	EPB1-EE-N1 EPB1-EE-N2	EPB1C-EE-N1 EPB1C-EE-N2	0.32	1.95
2NO, 2NC		Ø1/2" NPT Ø3/4" NPT	START, STOP or ON, OFF	EPB1-DE-N1 EPB1-DE-N2	EPB1C-DE-N1 EPB1C-DE-N2	0.32	1.95
2 (1NO - 1NC)		Ø1/2" NPT Ø3/4" NPT	FORWARD, REVERSE	EPB1-CC-N1 EPB1-CC-N2	EPB1C-CC-N1 EPB1C-CC-N2	0.32	1.95
Single Gang (Long), 3PB							
1NO, 1NO, 1NO		Ø1/2" NPT Ø3/4" NPT	Specify	EPB1-AAA-N1 EPB1-AAA-N2	EPB1C-AAA-N1 EPB1C-AAA-N2	1.18	1.98
1NC, 1NC, 1NC		Ø1/2" NPT Ø3/4" NPT	Specify	EPB1-BBB-N1 EPB1-BBB-N2	EPB1C-BBB-N1 EPB1C-BBB-N2	1.18	1.98
2 (1NO - 1NC), 1NC		Ø3/4" NPT Ø1" NPT	FORWARD, REVERSE, STOP	EPB1-CCB-N2 EPB1-CCB-N3	EPB1C-CCB-N2 EPB1C-CCB-N3	1.18	1.98

Control Station and Control Panel: Push Button, EPB series

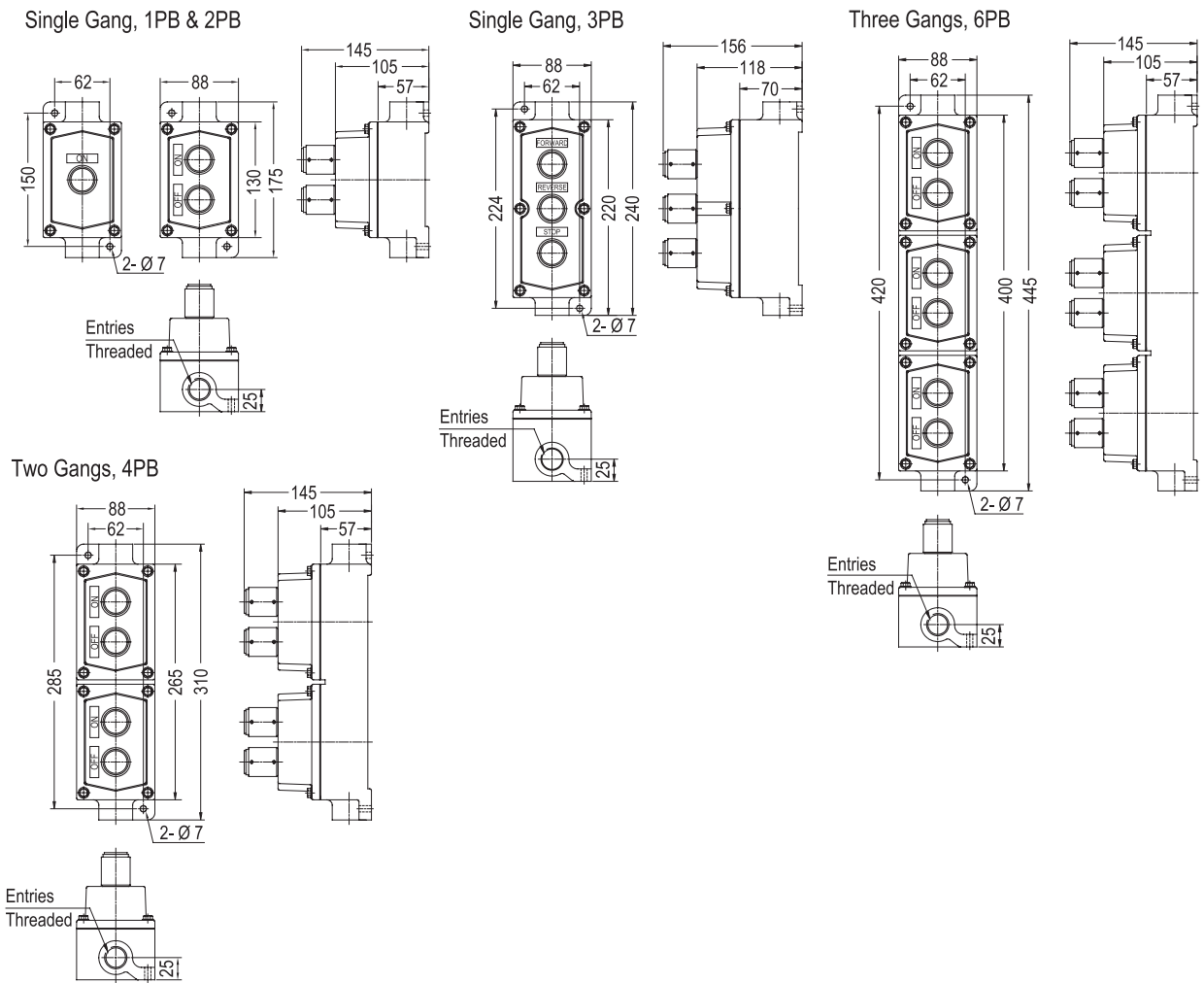


Flameproof
Zone 1 & 2 – 22

Catalogue Number

Contact	Symbol	Entries Thread	Nameplate Marking	Cat. No.		Volume (dm ³)	Approx. Weight (kgs.)
				Dead-end (Bottom)	Through-feed		
Two Gangs, 4PB							
2 (1NO, 1NC)		Ø3/4" NPT	START, STOP or	EPB2-AB-N2	EPB2C-AB-N2	0.64	3.33
		Ø1" NPT	ON, OFF	EPB2-AB-N3	EPB2C-AB-N3		
4 (1NO - 1NC)		Ø3/4" NPT	Specify	EPB2-CC-N2	EPB2C-CC-N2	0.64	3.33
		Ø1" NPT		EPB2-CC-N3	EPB2C-CC-N3		
Three Gangs, 6PB							
3 (1NO, 1NC)		Ø3/4" NPT	START, STOP or	EPB3-AB-N2	EPB3C-AB-N2	0.96	4.93
		Ø1" NPT	ON, OFF	EPB3-AB-N3	EPB3C-AB-N3		
6 (1NO - 1NC)		Ø3/4" NPT	Specify	EPB3-CC-N2	EPB3C-CC-N2	0.96	4.93
		Ø1" NPT		EPB3-CC-N3	EPB3C-CC-N3		

Dimension



Control Station and Control Panel: Pilot Light, EPL series



Flameproof
Zone 1 & 2 – 22

Catalogue Number



Catalogue Number Logic

EPL	X	-	X	□	◇	-	XX
Series	Gang: 1 = Single gang 2 = Two gangs	Type: none = Dead-end C = Through-feed	Voltage (LED lamp): 2D = 24V.DC. 12 = 120V.AC. 22 = 220-230V.AC.	Lens colour: G = Green R = Red Y = Yellow B = Blue C = Clear	Entries: N1 = 1/2" NPT N2 = 3/4" NPT N3 = 1" NPT		

Number of Pilot Light	Symbol	Entries Thread	Nameplate Marking	Cat. No.		Volume (dm ³)	Approx. Weight (kgs.)
				Dead-end (Bottom)	Through-feed		

Single Gang

1		Ø1/2" NPT	Specify for RUN, STOP, ON, OFF	EPL1-1□◇-N1	EPL1C-1□◇-N1	0.32	1.65
		Ø3/4" NPT		EPL1-1□◇-N2	EPL1C-1□◇-N2		
2		Ø1/2" NPT		EPL1-2□◇◇-N1	EPL1C-2□◇◇-N1	0.32	1.69
		Ø3/4" NPT		EPL1-2□◇◇-N2	EPL1C-2□◇◇-N2		
3		Ø1/2" NPT		EPL1-3□◇◇◇-N1	EPL1C-3□◇◇◇-N1	1.18	2.95
		Ø3/4" NPT		EPL1-3□◇◇◇-N2	EPL1C-3□◇◇◇-N2		

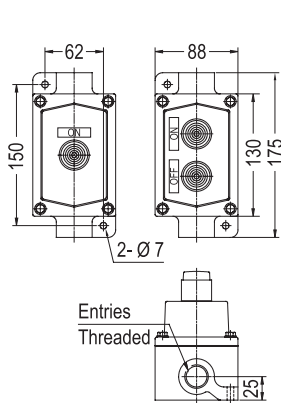
Two Gang

2		Ø1/2" NPT	Specify for RUN, STOP, ON, OFF	EPL2-2□◇◇-N1	EPL2C-2□◇◇-N1	0.64	3.08
		Ø3/4" NPT		EPL2-2□◇◇-N2	EPL2C-2□◇◇-N2		
4		Ø3/4" NPT		EPL2-4□◇◇◇◇-N2	EPL2C-4□◇◇◇◇-N2	0.64	3.19
		Ø1" NPT		EPL2-4□◇◇◇◇-N3	EPL2C-4□◇◇◇◇-N3		

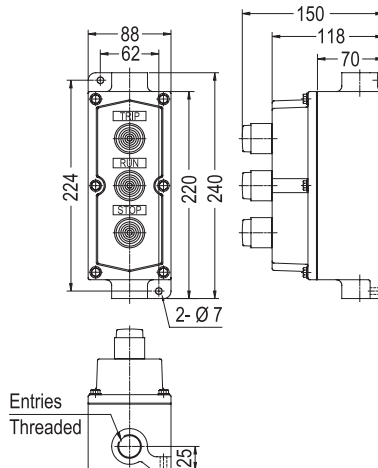
Specify operating voltage code for lamp's transformer

Dimension

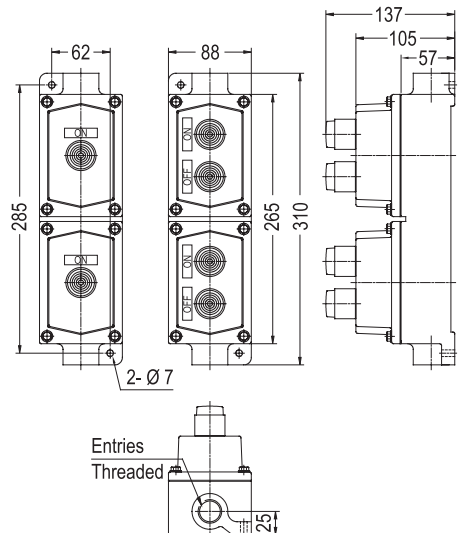
Single Gang, 1PL & 2PL



Single Gang, 3PL



Two Gangs, 2PL & 4PL



Control Station and Control Panel: Push Button & Pilot Light, EPBL series



Flameproof
Zone 1 & 2 – 22

Catalogue Number



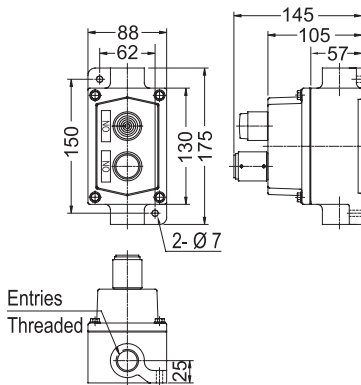
Catalogue Number Logic

EPBL	X	X	-	X	□	◇	-	XX
Series	Gang: 1 = Single gang 2 = Two gangs 3 = Three gangs	Type: none = Dead-end C = Through-feed		Contact per gang: A = 1NO B = 1NC C = 1NO-1NC (Momentary function)	Voltage: 2D = 24V.DC. 12 = 120V.AC. 22 = 220-230V.AC.	Lens colour: G = Green R = Red Y = Yellow B = Blue C = Clear		Entries: N1 = 1/2" NPT N2 = 3/4" NPT N3 = 1" NPT

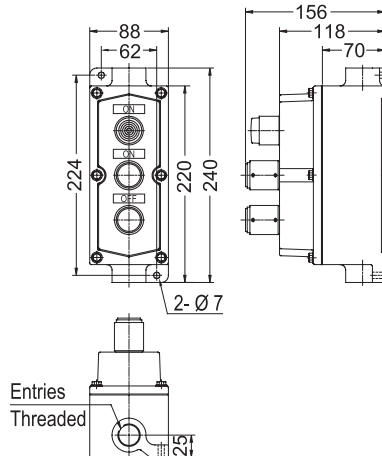
Contact	Symbol	Entries Thread	Nameplate Marking	Cat. No.		Volume (dm ³)	Approx. Weight (kgs.)
				Dead-end (Bottom)	Through-feed		
Single Gang							
1 PL + 1PB (1NO)		Ø1/2" NPT Ø3/4" NPT	RUN, START	EPBL1-A□◇-N1 EPBL1-A□◇-N2	EPBL1C-A□◇-N1 EPBL1C-A□◇-N2	0.32	2.35
1PL + 1PB (1NC)		Ø1/2" NPT Ø3/4" NPT	<i>Specify</i>	EPBL1-B□◇-N1 EPBL1-B□◇-N2	EPBL1C-B□◇-N1 EPBL1C-B□◇-N2	0.32	2.35
1PL + 1PB (1NO-1NC)		Ø1/2" NPT Ø3/4" NPT	<i>Specify</i>	EPBL1-C□◇-N1 EPBL1-C□◇-N2	EPBL1C-C□◇-N1 EPBL1C-C□◇-N2	1.18	2.35
1PL + 2PB (1NO,1NC)		Ø1/2" NPT Ø3/4" NPT	RUN, START, STOP	EPBL1-AB□◇-N1 EPBL1-AB□◇-N2	EPBL1C-AB□◇-N1 EPBL1C-AB□◇-N2	1.18	2.35
1PL + 2PB (2(1NO-1NC))		Ø1/2" NPT Ø3/4" NPT	RUN, START, STOP	EPBL1-CC□◇-N1 EPBL1-CC□◇-N2	EPBL1C-CC□◇-N1 EPBL1C-CC□◇-N2	1.18	2.35
Two Gangs							
2PL + 2PB (1NO,1NC)		Ø1/2" NPT Ø3/4" NPT	<i>Specify</i>	EPBL2-AB□◇-N1 EPBL2-AB□◇-N2	EPBL2C-AB□◇-N1 EPBL2C-AB□◇-N2	0.64	3.62
2PL + 2PB (2(1NO-1NC))		Ø3/4" NPT Ø1" NPT	<i>Specify</i>	EPBL2-CC□◇-N2 EPBL2-CC□◇-N3	EPBL2C-CC□◇-N2 EPBL2C-CC□◇-N3	0.64	3.62

Dimension

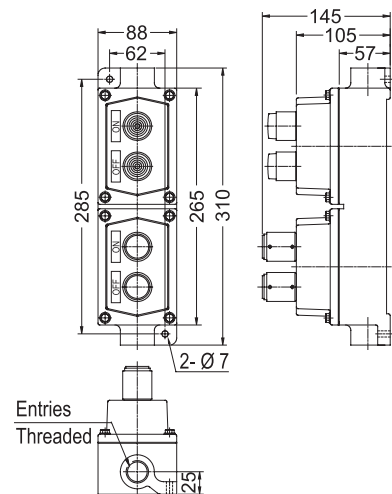
Single Gang, 1PL + 1PB



Single Gang, 1PL + 2PB



Two Gangs, 2PL + 2PB



Control Station and Control Panel: Emergency Push Button (Red), EEM series



Flameproof
Zone 1 & 2 – 22

Catalogue Number



Catalogue Number Logic

EEM
Series

X
Type:
none = Dead-end
C = Through-feed

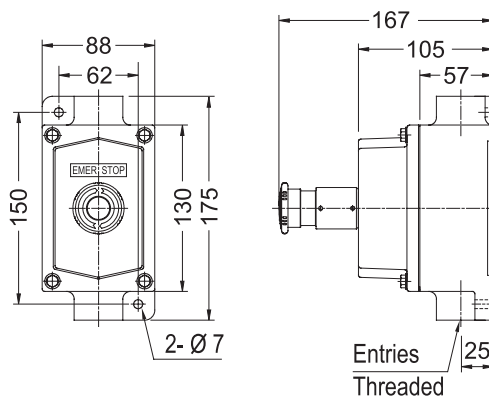
XXX
Contact per gang:
B = 1NC
C = 1NO-1NC
E = 2NC

X
Function:
none = Push-Pull
L = Push-Lock Turn to release
K = Push-Lock Key to release

XX
Entries:
N1 = 1/2" NPT
N2 = 3/4" NPT

Contact	Symbol	Entries Thread	Nameplate Marking	Cat. No.		Volume (dm ³)	Approx. Weight (kgs.)
				Dead-end (Bottom)	Through-feed		
Push-Pull							
1NC		Ø1/2" NPT Ø3/4" NPT	EMERGENCY STOP	EEM-B-N1	EEMC-B-N1	0.32	1.75
				EEM-B-N2	EEMC-B-N2		
2NC		Ø1/2" NPT Ø3/4" NPT		EEM-E-N1	EEMC-E-N1	0.32	1.75
				EEM-E-N2	EEMC-E-N2		
1NO - 1NC		Ø1/2" NPT Ø3/4" NPT		EEM-C-N1	EEMC-C-N1	0.32	1.75
				EEM-C-N2	EEMC-C-N2		
Push-Lock Turn to release							
1NC		Ø1/2" NPT Ø3/4" NPT	EMERGENCY STOP	EEM-BL-N1	EEMC-BL-N1	0.32	1.75
				EEM-BL-N2	EEMC-BL-N2		
2NC		Ø1/2" NPT Ø3/4" NPT		EEM-EL-N1	EEMC-EL-N1	0.32	1.75
				EEM-EL-N2	EEMC-EL-N2		
1NO - 1NC		Ø1/2" NPT Ø3/4" NPT		EEM-CL-N1	EEMC-CL-N1	0.32	1.75
				EEM-CL-N2	EEMC-CL-N2		
Push-Lock Key to release							
1NC		Ø1/2" NPT Ø3/4" NPT	EMERGENCY STOP	EEM-BK-N1	EEMC-BK-N1	0.32	1.75
				EEM-BK-N2	EEMC-BK-N2		
2NC		Ø1/2" NPT Ø3/4" NPT		EEM-EK-N1	EEMC-EK-N1	0.32	1.75
				EEM-EK-N2	EEMC-EK-N2		
1NO - 1NC		Ø1/2" NPT Ø3/4" NPT		EEM-CK-N1	EEMC-CK-N1	0.32	1.75
				EEM-CK-N2	EEMC-CK-N2		

Dimension



Control Station and Control Panel: Selector Switch, ESL series



**Flameproof
Zone 1 & 2 – 22**

Catalogue Number



Catalogue Number Logic

ESL **X** - **X** **X** **S** - **XX**

Series Type: none = Dead-end, C = Through-feed Position: 2 = 2-Positions, 3 = 3-Positions Contact per gang: A = 1NO B = 1NC, C = 1NO-1NC, D = 2NO Function: none = Stay put, S = Spring return Entries: N1 = 1/2" NPT, N2 = 3/4" NPT

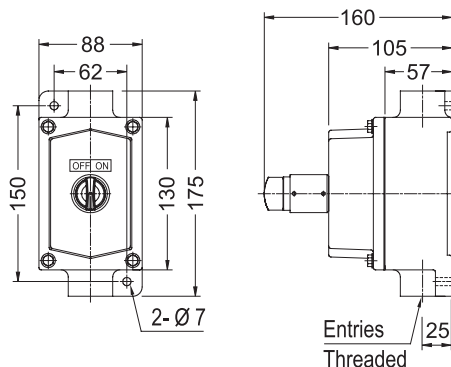
Operator Position	Contact Code	Entries Thread	Nameplate Marking	Cat. No.				Volume (dm ³)	Approx. Weight (kgs.)
				Stay put or Maintained		Spring Return from Right			
L	R								

2-Positions	●	1NO	Ø1/2" NPT	OFF-ON	ESL-2A-N1	ESLC-2A-N1	ESL-2AS-N1	ESLC-2AS-N1	0.32	1.75
			Ø3/4" NPT		ESL-2A-N2	ESLC-2A-N2	ESL-2AS-N2	ESLC-2AS-N2		
	●	1NO-1NC	Ø1/2" NPT	MAN-AUTO	ESL-2C-N1	ESLC-2C-N1	ESL-2CS-N1	ESLC-2CS-N1	0.32	1.75
			Ø3/4" NPT		ESL-2C-N2	ESLC-2C-N2	ESL-2CS-N2	ESLC-2CS-N2		
	●	2NO	Ø1/2" NPT	OFF-ON	ESL-2D-N1	ESLC-2D-N1	ESL-2DS-N1	ESLC-2DS-N1	0.32	1.75
			Ø3/4" NPT		ESL-2D-N2	ESLC-2D-N2	ESL-2DS-N2	ESLC-2DS-N2		
	●	2-(1NO-1NC)	Ø1/2" NPT	MAN-AUTO	ESL-2CC-N1	ESLC-2CC-N1	ESL-2CCS-N1	ESLC-2CCS-N1	0.32	1.75
			Ø3/4" NPT		ESL-2CC-N2	ESLC-2CC-N2	ESL-2CCS-N2	ESLC-2CCS-N2		

Operator Position	Contact Code	Entries Thread	Nameplate Marking	Cat. No.				Volume (dm ³)	Approx. Weight (kgs.)
				Stay put or Maintained		Spring Return from Right to Center			
L	C	R							

3-Positions	●	2NO	Ø1/2" NPT	MAN-OFF-AUTO	ESL-3D-N1	ESLC-3D-N1	ESL-3DS-N1	ESLC-3DS-N1	0.32	1.80
			Ø3/4" NPT		ESL-3D-N2	ESLC-3D-N2	ESL-3DS-N2	ESLC-3DS-N2		
	●	4NO	Ø1/2" NPT	MAN-OFF-AUTO	ESL-3DD-N1	ESLC-3DD-N1	ESL-3DDS-N1	ESLC-3DDS-N1	0.32	1.80
			Ø3/4" NPT		ESL-3DD-N2	ESLC-3DD-N2	ESL-3DDS-N2	ESLC-3DDS-N2		

Dimension



Control Station and Control Panel: Key Selector Switch, EKS series



Flameproof
Zone 1 & 2 – 22

Catalogue Number



Catalogue Number Logic

EKS **X** - **X** **X** **S** - **XX**

Series Type: Position: Contact per gang: Function: Entries:

 none = Dead-end 2 = 2-Positions A = 1NO B = 1NC none = Stay put N1 = 1/2" NPT

 C = Through-feed 3 = 3-Positions C = 1NO-1NC S = Spring return N2 = 3/4" NPT

 D = 2NO

Operator Position	Contact Code	Entries Thread	Nameplate Marking	Cat. No.				Volume (dm ³)	Approx. Weight (kgs.)	
				Stay put or Maintained		Spring Return from Right				
				Dead-end (Bottom)	Through-feed	Dead-end (Bottom)	Through-feed			
L R										
2-Positions	●	1NO	Ø1/2" NPT	OFF-ON	EKS-2A-N1	EKSC-2A-N1	EKS-2AS-N1	EKSC-2AS-N1	0.32	1.80
			Ø3/4" NPT		EKS-2A-N2	EKSC-2A-N2	EKS-2AS-N2	EKSC-2AS-N2		
	●	1NO-1NC	Ø1/2" NPT	MAN-AUTO	EKS-2C-N1	EKSC-2C-N1	EKS-2CS-N1	EKSC-2CS-N1	0.32	1.80
			Ø3/4" NPT		EKS-2C-N2	EKSC-2C-N2	EKS-2CS-N2	EKSC-2CS-N2		
	●	2NO	Ø1/2" NPT	OFF-ON	EKS-2D-N1	EKSC-2D-N1	EKS-2DS-N1	EKSC-2DS-N1	0.32	1.80
			Ø3/4" NPT		EKS-2D-N2	EKSC-2D-N2	EKS-2DS-N2	EKSC-2DS-N2		
3-Positions	●	2-(1NO-1NC)	Ø1/2" NPT	MAN-AUTO	EKS-2CC-N1	EKSC-2CC-N1	EKS-2CCS-N1	EKSC-2CCS-N1	0.32	1.80
			Ø3/4" NPT		EKS-2CC-N2	EKSC-2CC-N2	EKS-2CCS-N2	EKSC-2CCS-N2		
	●									
	●									

Operator Position	Contact Code	Entries Thread	Nameplate Marking	Cat. No.				Volume (dm ³)	Approx. Weight (kgs.)	
				Stay put or Maintained		Spring Return from Right to Center				
				Dead-end (Bottom)	Through-feed	Dead-end (Bottom)	Through-feed			
L C R										
3-Positions	●	2NO	Ø1/2" NPT	MAN-OFF-AUTO	EKS-3D-N1	EKSC-3D-N1	EKS-3DS-N1	EKSC-3DS-N1	0.32	1.95
			Ø3/4" NPT		EKS-3D-N2	EKSC-3D-N2	EKS-3DS-N2	EKSC-3DS-N2		
	●	4NO	Ø1/2" NPT	MAN-OFF-AUTO	EKS-3DD-N1	EKSC-3DD-N1	EKS-3DDS-N1	EKSC-3DDS-N1	0.32	1.95
			Ø3/4" NPT		EKS-3DD-N2	EKSC-3DD-N2	EKS-3DDS-N2	EKSC-3DDS-N2		

Dimension

