

Lighting: Incandescent and Compact Fluorescent Lighting Fixture, VIN, VCF Series



A QUALITY PRODUCT

Zone 2 – 21

Specification

Body material : Marine grade copper-free aluminium alloy with polyester powder coated, RAL 7032 (grey)
 Glass globe : Borosilicate glass
 Guard : Stainless steel
 Sealing gasket : Silicone -40 °C to +175 °C

Technical Data

Hazardous Area	Gas	Dust
Zones	1 & 2	21
Conforming to ATEX	II 3G	II 3D
Symbol of Protection ATEX	Ex nRc IIC Gc	Ex tb IIIC Db
Symbol of Protection IEC		
Standard	ATEX Directive 2014/34/EU, std. EN 60079-0:2012 + A11:2013, EN 60079-15:2010, EN 60079-31:2014	
	IECEX Scheme, std. IEC 60079-0:2011, IEC 60079-15:2010, IEC 60079-31:2013	
Ambient Temperature	-20 °C to +55 °C	
Index of Protection	IP66	
Mounting	Ceiling, pendant, stanchion or bracket mounting	
Connection	L, N and E ; for 1-4mm. ² cable	
Rated Voltage	220V.AC.±5% 50Hz.	



Ceiling mounting



Pendant mounting



Stanchion mounting



Bracket mounting

F

Catalogue Number and Dimension

VXX -

Series:
 VIN = Incandescent
 VCF = Compact Fluorescent

XXX

Lamp Watt:
 (see catalogue number table)

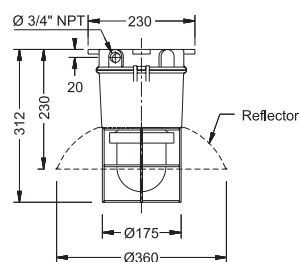
□

Mounting:
 C = Ceiling
 P = Pendant
 S = Stanchion
 B = Bracket

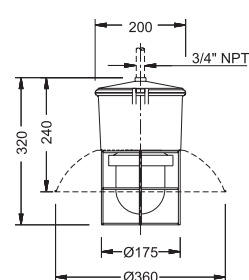
Accessories:
 R = Reflector

Lamp Watt	Cat. No.	Voltage	Lamp Model	Temp. Class (for zone 1 & 2)		Max. Surface Temp (for zone 22)	
				Ta 40 °C	Ta 55 °C	Ta 40 °C	Ta 55 °C
Incandescent							
60W.	VIN-60 □	220V. 50Hz.	CLAS 60W E27 A55 (730lm)	T4	T4	T135°C	T135°C
100W.	VIN-100 □		CLAS 100W E27 A55 (1380lm)				
Compact Fluorescent							
11W.	VCF-11 □	220V. 50Hz.	Genie 11W CDL E27 (570lm)	T6	T5	T80°C	T100°C
14W.	VCF-14 □		Genie 14W CDL E27 (760m)	T6	T5	T80°C	T100°C
18W.	VCF-18 □		Genie 18W CDL E27 (1040m)	T5	T4	T100°C	T135°C

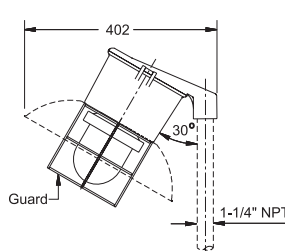
Ceiling mounting



Pendant mounting



Stanchion mounting



Bracket mounting

