

Lighting: Floodlight, EFD Series

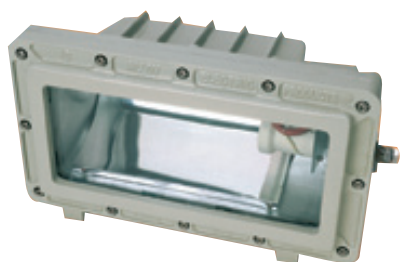


A QUALITY PRODUCT

Flameproof Zone 1 & 2 – 21 & 22

Specification

- Body material : Marine grade copper-free aluminium alloy with polyester powder coated, RAL 7032 (grey)
- Lens : Heat and impact resistant clear glass
- Bracket, bolts : Stainless steel
- Internal reflector : Anodized aluminium
- Sealing gasket : Silicone -40 °C to +175 °C



Technical Data

Hazardous Area	Gas	Dust
Zones	1 & 2	21 & 22
Conforming to ATEX	II 2G	II 2D
Symbol of Protection ATEX	Ex db eb IIB Gb	Ex tb IIIC Db
Symbol of Protection IEC		
Standard	ATEX Directive 2014/34/EU, std. EN 60079-0:2012 + A11:2013, EN 60079-1:2014, EN 60079-7:2007, EN 60079-31:2014	
	IECEx Scheme, std. IEC 60079-0:2011, IEC 60079-1:2014, IEC 60079-7:2015, IEC 60079-31:2013	
Ambient Temperature	-20 °C to +55 °C	
Index of Protection	IP66	
Entries	M25x1.5 or Ø3/4" NPT	
Mounting	Bracket mounting	
Connection	L, N and E ; for 1-4mm. ² cable	
Rated Voltage	220/ 230V.AC.±5% 50Hz.	

Wiring Diagram

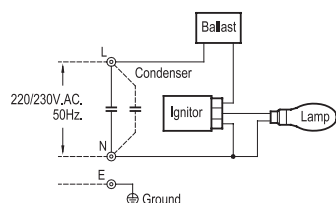


Diagram-A

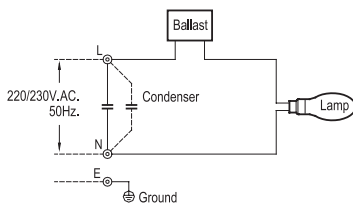
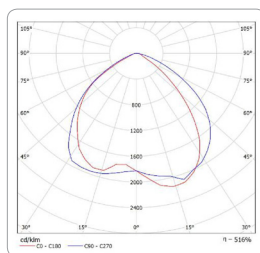
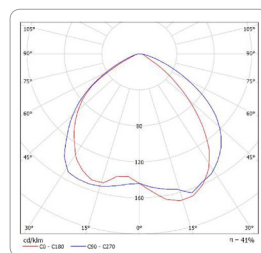


Diagram-B

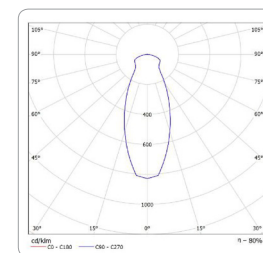
Polar curve for EFDH-250



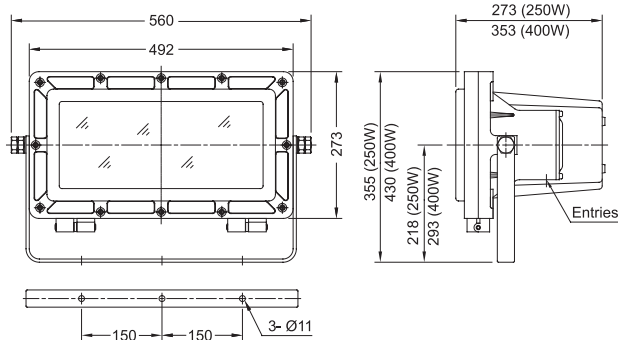
Polar curve for EFDS-250



Polar curve for EFDM-250



Dimension



Catalogue Number

Lamp Watt	Cat. No.	Voltage	Lamp/ Ballast/ Ignitor	Temp. Class (for zone 1, 2)		Max. Surface Temp* (for zone 21, 22)		Entries		Wiring Diagram	Approx. Weight (kgs.)
				Ta 40 °C	Ta 55 °C	Ta 40 °C	Ta 55 °C	NPT	Metric		
Mercury Vapor											
250W.	EFDH-250	220V. 50Hz.	HPL-N 250W / Q250.513 / -	T4	T3	T130°C	T160°C	Ø3/4"	M25x1.5	Dia-B	24.5
400W.	EFDH-400		HPL-N 400W / Q400.561 / -	T3	T3	T165°C	T180°C				27.2
250W.	EFDH-250 3	230V. 50Hz.	HPL-N 250W / Q250.528 / -	T4	T3	T130°C	T165°C	Ø3/4"	M25x1.5	Dia-B	24.5
High Pressure Sodium											
250W.	EFDS-250	220V. 50Hz.	SON-T 250W / NaHJ250.160 / Z400M	T4	T3	T130°C	T160°C	Ø3/4"	M25x1.5	Dia-A	24.5
400W.	EFDS-400		SON-T 400W / NaHJ400.006 / Z400M	T3	T3	T160°C	T180°C				27.2
400W.	EFDS-400 3	230V. 50Hz.	SON-T 400W / NaHJ400.006 / Z400M	T3	T3	T160°C	T180°C	Ø3/4"	M25x1.5	Dia-A	27.2
Metal Halide											
250W.	EFDH-250	220V. 50Hz.	HPI-T PLUS-250W BU / Q250.513 / Z400M	T4	T3	T135°C	T175°C	Ø3/4"	M25x1.5	Dia-A	24.5
400W.	EFDH-400		HPI-T PLUS-400W BUS / Q400.561 / -	T3	T3	T165°C	T180°C			Dia-B	27.2
250W.	EFDH-250 3	230V. 50Hz.	HPI-T PLUS-250W BU / Q250.528 / Z400M	T4	T3	T135°C	T160°C	Ø3/4"	M25x1.5	Dia-A	24.5

Remark* : The maximum surface temperatures are specified for dust free condition. The dust layer which may cover around the lighting fixture will affect to higher surface temperature.