

Enclosure: Empty Enclosures, EJB Series



A QUALITY PRODUCT

Flameproof Zone 1 & 2 – 21 & 22

Application

The EJB junction boxes are designed for use

- in hazardous areas, zone 1, 2 and zone 21, 22.
- to provide openings for taps, splices or pull box.
- in indoor or outdoor in damp or wet locations or certain corrosive environments.

Specification

- Body, cover : Marine grade copper-free aluminium alloy with polyester powder coated, RAL 7032 (Grey)
- Lid screws : Stainless steel
- Sealing gasket : Silicone -40 °C to +175 °C

Electrical Rating

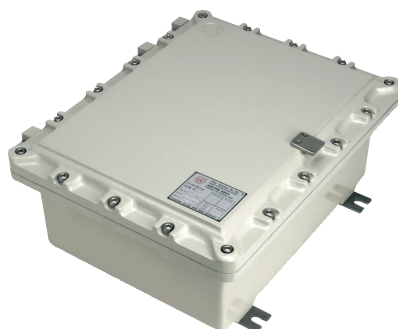
- Rated voltage : up to 800V.AC.
(as per equipment specification)

Technical Data

Hazardous Area	Gas	Dust
Zones	1 & 2	21 & 22
Conforming to ATEX	Ex II 2G	Ex II 2D
Symbol of Protection ATEX	Ex db IIB Gb	Ex tb IIIC Db
Symbol of Protection IEC		
T rating	see dissipation power loss table	
Standard	ATEX Directive 2014/34/EU, std. EN 60079-0:2012, EN 60079-1:2014, EN 60079-31:2014	
	IECEx Scheme, std. IEC 60079-0:2011, IEC 60079-1:2014, IEC 60079-31:2013	
Ambient Temperature	-20 °C to +55 °C	
Index of Protection	IP66	
Entries	NPT or Metric threads	
Mounting	Wall type	

Dissipation Power Loss by use in Temperature Class

Cat. No.	Max. Dissipation Power Loss (Watt)			
	Ta = +40°C		Ta = +55°C	
	T6	T5	T6	T5
EJB 684	39	72	25	39
EJB 685	44	78	28	44
EJB 6103	40	72	26	40
EJB 885	49	86	32	49
EJB 886	53	91	34	53
EJB 8114	59	99	38	59
EJB 8126	70	114	45	70
EJB 8186	100	155	65	100
EJB 8187	119	179	77	119
EJB 9156	93	145	60	93
EJB 9157	110	168	71	110
EJB 9206	117	177	76	117
EJB 9207	138	204	89	138
EJB 101610	134	200	87	134
EJB 11217	161	236	104	161
EJB 11218	165	241	107	165
EJB 12126	97	150	63	97
EJB 12127	111	168	72	111
EJB 15156	128	193	83	128
EJB 151510	170	250	111	170
EJB 15197	178	260	115	178
EJB 15198	181	264	118	181
EJB 162810	288	407	187	288
EJB 18188	205	296	133	205
EJB 20208	232	333	151	232
EJB 202410	293	416	190	293
EJB 20329	366	514	238	366
EJB 203611	447	622	290	447
EJB 284411	625	868	406	625

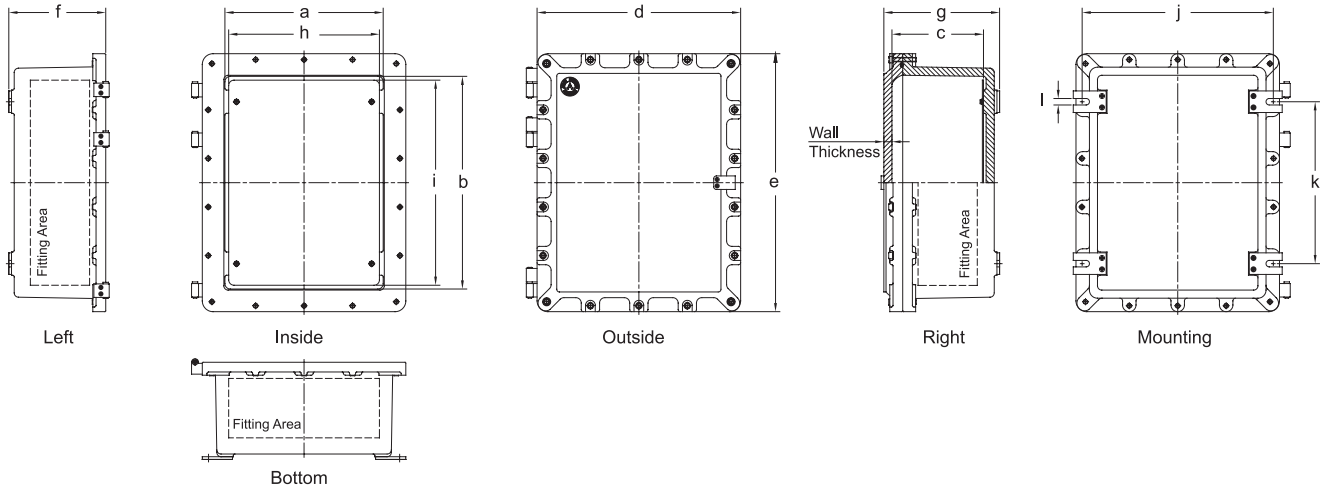


Enclosure: Empty Enclosures, EJB Series



Flameproof
Zone 1 & 2 – 21 & 22

Catalogue Number and Dimension



Cat. No.	Dimension in mm.												Wall Thickness	Volume (dm ³)	Empty Weight (kgs.)
	Inside			Outside				Equipment Plate		Mounting					
	a	b	c	d	e	f	g	h	i	j	k	l			
EJB 684	96	151	86	160	215	88	113	90	145	130	100	7.5	7	1.25	3.75
EJB 685	97	151	108	160	215	113	138	90	145	130	100	7.5	7	1.58	4.00
EJB 6103	105	210	44	155	264	64	82	97	206	-	-	-	8	0.97	3.82
EJB 885	134	134	103	205	205	101	136	115	115	180	100	10	10	1.85	5.45
EJB 886	134	134	122	205	205	119	154	115	115	180	100	10	10	2.19	5.66
EJB 8114	136	208	80	210	285	84	120	125	205	190	140	12	13	2.26	6.75
EJB 8126	130	235	110	205	310	115	150	115	220	190	160	12	13	3.36	9.25
EJB 8186	130	388	114	207	465	118	155	120	375	185	300	12	13	5.75	13.45
EJB 8187	130	388	164	207	465	168	205	120	375	185	300	12	13	8.27	14.15
EJB 9156	158	308	114	237	387	120	155	150	295	210	230	12	13	5.55	11.00
EJB 9157	158	309	164	237	387	170	205	150	295	210	230	12	13	8.01	13.40
EJB 9206	153	431	119	230	508	121	160	140	420	210	350	12	13	7.85	14.01
EJB 9207	153	431	169	230	508	171	210	140	420	210	350	12	13	11.14	16.80
EJB 101610	170	320	216	246	396	215	260	155	295	235	240	12	15	11.75	15.88
EJB 11217	203	445	164	285	525	173	210	195	435	260	350	12	15	14.81	22.33
EJB 11218	203	445	173	285	525	183	220	195	435	260	350	12	15	15.63	26.10
EJB 12126	240	240	106	315	315	115	150	235	235	295	170	12	15	6.11	13.01
EJB 12127	240	240	146	315	315	155	190	235	235	295	170	12	15	8.41	15.85
EJB 15156	298	298	110	380	380	117	156	280	280	360	240	12	15	9.77	19.55
EJB 151510	298	298	219	380	380	225	264	280	280	360	240	12	15	19.45	26.61
EJB 15197	294	394	163	378	478	173	208	280	380	355	300	12	15	18.88	31.83
EJB 15198	294	394	170	378	478	180	215	280	380	355	300	12	15	19.69	32.01
EJB 162810	318	615	224	401	698	223	270	300	595	380	450	12	15	43.81	35.75
EJB 18188	370	370	178	460	460	178	221	355	355	435	300	12	15	24.37	30.55
EJB 20208	411	411	163	505	505	171	216	395	395	505	290	15	18	27.53	45.05
EJB 202410	422	522	204	505	605	214	261	405	510	505	450	15	18	44.94	51.05
EJB 20329†	418	707	200	510	800	211	255	405	690	510	335	15	20	59.11	73.88
EJB 203611†	407	800	224	520	925	248	291	405	800	515	340	15	25	72.93	107.50
EJB 284411†	586	986	225	710	1110	227	286	580	950	700	400	15	25	130.00	164.74

† 6 Mounting feet.

Enclosure: Empty Enclosures, EJB Series



Flameproof
Zone 1 & 2 – 21 & 22

Maximum Entries Thread Size

* Ø2-1/2" to Ø4" NPT with conduit hub.

Cat. No.	Maximum entries thread size, NPT (Metric)									
	Ø1/2" (M20x1.5)	Ø3/4" (M25x1.5)	Ø1" (M32x1.5)	Ø1-1/4" (M40x1.5)	Ø1-1/2" (M50x1.5)	Ø2" (M63x1.5)	Ø2-1/2" * (M75x1.5)	Ø3" * (M80x2.0)	Ø3-1/2" * (M90x2.0)	Ø4" * (M100x2.0)

TOP or BOTTOM

EJB 684	2	2	–	–	–	–	–	–	–	–
EJB 685	2	2	–	–	–	–	–	–	–	–
EJB 6103	2	2	–	–	–	–	–	–	–	–
EJB 885	2	2	2	–	–	–	–	–	–	–
EJB 886	2	2	2	1	–	–	–	–	–	–
EJB 8114	2	2	–	–	–	–	–	–	–	–
EJB 8126	2	2	2	1	–	–	–	–	–	–
EJB 8186	2	2	2	1	–	–	–	–	–	–
EJB 8187	3	3	3	1	1	1	1	–	–	–
EJB 9156	3	3	2	2	–	–	–	–	–	–
EJB 9157	5	5	4	2	2	1	1	–	–	–
EJB 9206	3	3	2	2	–	–	–	–	–	–
EJB 9207	5	4	3	2	2	1	1	–	–	–
EJB 101610	8	8	5	3	3	1	1	1	1	1
EJB 11217	6	6	5	3	2	2	1	–	–	–
EJB 11218	6	6	5	3	2	2	1	–	–	–
EJB 12126	4	4	4	3	–	–	–	–	–	–
EJB 12127	7	7	5	3	3	2	1	–	–	–
EJB 15156	5	5	4	4	–	–	–	–	–	–
EJB 151510	14	14	8	5	5	3	2	2	1	1
EJB 15197	9	9	7	5	3	2	2	–	–	–
EJB 15198	9	9	7	5	3	2	2	–	–	–
EJB 162810	17	14	7	7	5	3	2	2	1	1
EJB 18188	13	11	9	5	4	3	2	–	–	–
EJB 20208	13	13	9	5	4	3	1	–	–	–
EJB 202410	23	20	11	7	7	3	2	2	2	1
EJB 20329	20	20	11	7	4	3	3	2	2	–
EJB 203611	20	18	12	7	6	4	3	2	2	1
EJB 284411	32	29	13	11	9	5	4	3	3	2

LEFT or RIGHT

EJB 684	3	3	–	–	–	–	–	–	–	–
EJB 685	3	3	–	–	–	–	–	–	–	–
EJB 6103	3	3	–	–	–	–	–	–	–	–
EJB 885	2	2	2	–	–	–	–	–	–	–
EJB 886	2	2	2	1	–	–	–	–	–	–
EJB 8114	3	3	–	–	–	–	–	–	–	–
EJB 8126	4	4	3	3	–	–	–	–	–	–
EJB 8186	7	6	6	5	–	–	–	–	–	–
EJB 8187	12	12	9	5	4	3	2	–	–	–
EJB 9156	6	5	5	4	–	–	–	–	–	–
EJB 9157	11	9	7	4	3	3	2	–	–	–
EJB 9206	8	7	6	5	–	–	–	–	–	–
EJB 9207	15	13	9	5	5	4	3	–	–	–
EJB 101610	14	14	9	6	5	3	2	2	1	1
EJB 11217	14	14	12	6	5	4	3	–	–	–
EJB 11218	14	14	12	6	5	4	3	–	–	–
EJB 12126	4	4	4	3	–	–	–	–	–	–
EJB 12127	7	7	5	3	3	2	1	–	–	–
EJB 15156	5	5	4	4	–	–	–	–	–	–
EJB 151510	14	14	8	5	5	3	2	2	1	1
EJB 15197	13	12	10	7	4	3	3	–	–	–
EJB 15198	13	12	10	7	4	3	3	–	–	–
EJB 162810	29	32	15	15	10	5	4	3	3	2
EJB 18188	13	11	9	5	4	3	2	–	–	–
EJB 20208	13	13	9	5	4	3	1	–	–	–
EJB 202410	27	26	14	9	9	4	3	3	3	2
EJB 20329	35	35	19	11	7	6	5	4	4	–
EJB 203611	42	39	24	15	13	8	5	4	4	3
EJB 284411	53	47	21	19	16	8	6	5	5	4