

Cable Fitting: Accessories for Cable Glands, Lock Nut/ Earth/ Shroud/ Gasket Ring

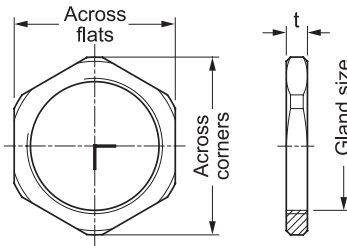


A QUALITY PRODUCT

Lock Nut

Lock nuts are used to secure the cable gland body to the gland plate or the enclosure which are less thickness.

- Material : brass
(Chromium plated is available upon request)



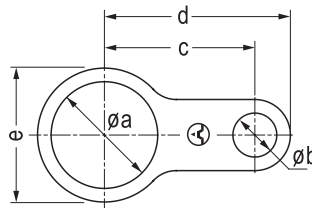
Cat. No.	Gland Size	Dimension in mm.			Approx. Weight (kgs.)
		Across Corners	Across Flats	THK. 'd'	
LNB-M16	M16x1.5	22.0	24.5	5.0	0.012
LNB-M20	M20x1.5	27.0	30.0	5.0	0.014
LNB-M25	M25x1.5	31.0	34.0	5.0	0.016
LNB-M32	M32x1.5	38.1	42.0	7.0	0.028
LNB-M40	M40x1.5	50.8	56.0	7.0	0.036
LNB-M50	M50x1.5	63.5	70.0	7.0	0.058
LNB-M63	M63x1.5	76.2	84.0	7.0	0.090
LNB-M75	M75x1.5	89.0	99.0	10.0	0.101
LNB-M90	M90x2.0	114.0	128.0	10.0	0.110
LNB-M100	M100x2.0	120.0	134.0	10.0	0.135
<hr/>					
LNB-N1	1/2" NPT	27.0	30.0	5.0	0.156
LNB-N2	3/4" NPT	31.0	34.0	5.0	0.015
LNB-N3	1" NPT	38.1	42.0	7.0	0.026
LNB-N4	1-1/4" NPT	50.8	56.0	7.0	0.053
LNB-N5	1-1/2" NPT	63.5	70.0	7.0	0.058
LNB-N6	2" NPT	76.2	84.0	7.0	0.106
LNB-N7	2-1/2" NPT	89.0	99.0	10.0	0.138
LNB-N8	3" NPT	101.0	112.0	10.0	0.110
LNB-N9	3-1/2" NPT	120.0	134.0	10.0	0.135
LNB-N10	4" NPT	127.0	140.0	10.0	0.156

NPT threads are also available upon request.

Earth Tag

Earth tags are installed between the cable gland and equipment to provide an earth/ bond connection.

- Material : brass

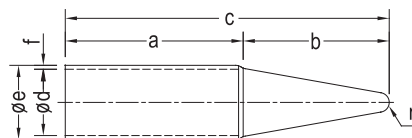


Cat. No.	Dimension in mm.					
	ø a	ø b	c	d	e	THK.
DET-0	16.5	6.75	30.0	36.5	22.0	1.5
DET-1	21.5	7.0	33.0	39.6	27.0	1.5
DET-2	26.5	10.5	36.0	44.5	38.0	1.5
DET-3	33.0	12.2	41.0	51.0	44.0	1.5
DET-4	41.5	13.5	44.5	60.0	50.0	1.5
DET-5	51.0	13.5	58.0	80.0	63.0	1.5
DET-6	64.0	13.5	67.0	86.0	76.0	1.5
DET-7	76.0	13.5	73.0	94.0	89.0	1.5
<hr/>						
DET-8	91.0	13.5	84.5	103.0	101.0	2.5
DET-9	101.0	13.5	96.0	114.0	114.0	2.5
DET-10	113.0	13.5	108.0	126.0	127.0	2.5

Shroud

The shrouds are used to minimise the risk of dirt or foreign substances gathering on the cable gland body.

- Material : PVC DIP moulded (black)

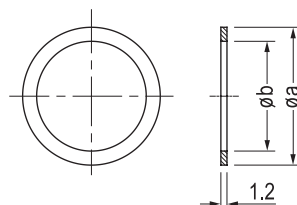


Cat. No.	Dimension in mm.						
	a	b	c	ø d	ø e	f	r
SHROUD-16	60	50	110	21	25	2.0	3
SHROUD-20	60	50	110	23	27	2.0	4
SHROUD-25	65	55	120	30	34	2.0	5
SHROUD-32	75	55	130	37	42	2.5	7
SHROUD-40	80	60	140	49	54	2.5	10
SHROUD-50	80	60	140	56	61	2.5	12
SHROUD-63	85	65	150	61	66	2.5	15
SHROUD-75	85	65	150	67	72	2.5	17
SHROUD-90	95	70	165	75	80	2.5	21

Gasket Ring

Gasket rings are used between the cable gland and enclosure interface to maintain the ingress protection rating of equipment.

- Material : Thermoplastic elastomer (nylon 66 resin)



Cat. No.	Dimension in mm.		Approx. Weight (kgs.)
	ø a	ø b	
GK-0	22.0	16.0	0.001
GK-1	27.0	21.5	0.001
GK-2	32.0	26.6	0.001
GK-3	39.0	33.0	0.002
GK-4	47.5	41.5	0.002
GK-5	58.0	50.0	0.002
GK-6	71.0	63.0	0.002
GK-7	84.0	75.0	0.003
GK-8	101.0	91.0	0.003
GK-9	113.0	101.0	0.004
GK-10	126.0	114.0	0.004