

Cable Fitting: Cable Gland for Non-Armoured Cable, DNAF Series (Female threads ended)



A QUALITY PRODUCT

Flameproof & Increased Safety Zone 1 & 2 - 21 & 22

Application

The DNAF cable glands are suitable for used in zone 1, 2 and zone 21, 22 hazardous areas to enable direct insertion of normal un-armoured cable into Ex d equipment or enclosure. The gland nut is provided with female threads ended.

Specification

Body, gland nut : Brass (Chromium plated is available upon request)
Sealing ring : Neoprene (CR) -25 °C to +100 °C
Entry thread seal : Thermoplastic elastomer (For metric threads only)

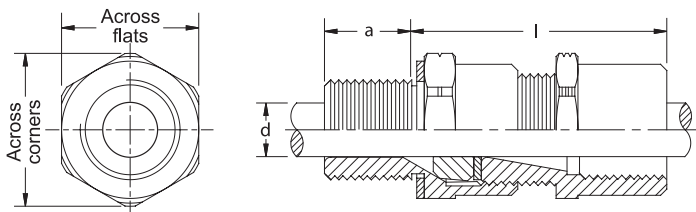
Ordering

Cat. No. (Option)
e.g. DNAF-N1 (Chromium plated)

Technical Data

Hazardous Area	Gas	Dust
Zones	1 & 2	21 & 22
Conforming to ATEX	Ex II 2G	Ex II 2D
Symbol of Protection ATEX	Ex db IIC Gb, Ex eb II Gb	Ex tb IIIC Db
Symbol of Protection IEC		
T rating	Temperature class of enclosure to which will be connected.	
Standard	ATEX Directive 2014/34/EU, std. EN 60079-0:2012+A11:2013, EN 60079-1:2014, EN 60079-7:2007, EN 60079-31:2014	
	IECEX Scheme, std. IEC 60079-0:2011, IEC 60079-1:2014, IEC 60079-7:2015, IEC 60079-31:2013	
Ambient Temperature	-20 °C to +75 °C	
Index of Protection	IP66	

Catalogue Number and Dimension



Cat. No.	Entries Thread (Male-Female)	Inner Cable Dia. 'd'		Dimension in mm.				Approx. Weight (kgs.)
		Min.	Max.	l	a	Across Corners	Across Flats	
DNAF/S -M0	M16 x 1.5			38.5	15.0	24.5	22.0	0.08
DNAF/S -M1	M20 x 1.5	3.0	8.6	38.5	15.0	30.0	27.0	0.10
DNAF/S -N1	1/2" NPT			41.5	19.9	30.0	27.0	0.11
DNAF/M -M1	M20 x 1.5	6.1	11.9	38.5	15.0	30.0	27.0	0.10
DNAF/M -N1	1/2" NPT			41.5	19.9	30.0	27.0	0.10
DNAF/L -M1	M20 x 1.5			39.5	15.0	34.0	31.0	0.11
DNAF/S -M2	M25 x 1.5	6.5	14.3	39.5	15.0	34.0	31.0	0.16
DNAF/L -N1	1/2" NPT			42.5	19.9	34.0	31.0	0.12
DNAF/S -N2	3/4" NPT			42.5	20.1	34.0	31.0	0.17
DNAF/M -M2	M25 x 1.5			46.5	15.0	42.0	38.1	0.17
DNAF/S -M3	M32 x 1.5	11.1	20.2	46.5	15.0	42.0	38.1	0.23
DNAF/M -N2	3/4" NPT			49.5	20.1	42.0	38.1	0.25
DNAF/S -N3	1" NPT			54.5	25.0	42.0	38.1	0.28
DNAF/M -M3	M32 x 1.5			47.5	15.0	49.0	44.4	0.23
DNAF/S -M4	M40 x 1.5	17.0	26.5	47.5	15.0	56.0	50.8	0.31
DNAF/M -N3	1" NPT			55.5	25.0	49.0	44.4	0.25
DNAF/S -N4	1-1/4" NPT			55.5	25.6	56.0	50.8	0.40
DNAF/M -M4	M40 x 1.5			51.0	15.0	56.0	50.8	0.30
DNAF/S -M5	M50 x 1.5	22.0	32.5	51.0	15.0	63.0	57.1	0.45
DNAF/M -N4	1-1/4" NPT			59.0	25.6	56.0	50.8	0.37
DNAF/S -N5	1-1/2" NPT			59.0	26.0	63.0	57.1	0.49
DNAF/M -M5	M50 x 1.5	29.5	38.1	51.0	15.0	63.0	57.1	0.42
DNAF/M -N5	1-1/2" NPT			59.0	26.0	63.0	57.1	0.46
DNAF/L -M5	M50 x 1.5		39.9/	51.0	15.0	70.0	63.5	0.48
DNAF/S -M6	M63 x 1.5	35.6	44.0	52.0	15.0	77.0	70.0	0.72
DNAF/L -N5	1-1/2" NPT			60.0	26.0	70.0	63.5	0.60
DNAF/S -N6	2" NPT			60.0	26.9	77.0	70.0	0.80
DNAF/M -M6	M63 x 1.5		50.5/	52.0	15.0	84.0	76.2	0.63
DNAF/S -M7	M75 x 1.5	39.0	54.0	52.0	15.0	88.9	99.0	1.00
DNAF/M -N6	2" NPT			60.0	26.9	84.0	76.2	0.84
DNAF/S -N7	2-1/2" NPT			72.0	39.9	88.9	99.0	1.56

Thread seal



Body (Entry thread)



Neoprene inner sealing ring



Sealing washer



Gland nut Female Threads ended