

Conduit Fitting: Clamp and Back Clamp/ Bracket Clamp, CL and CLB/ BC Series



Clamp and Back Clamp

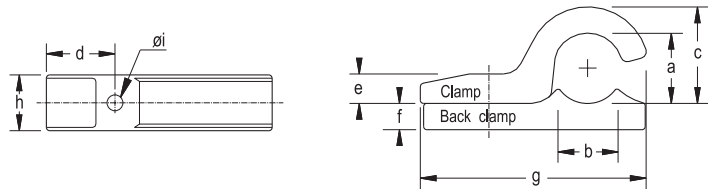


CL clamp



CLB back clamp

Catalogue Number and Dimension



Conduit Size (inch)	Cat. No.		Dimension in mm.								
	Clamps	Back Clamps	a	b	c	d	e	f	g	h	ø i
1/2	CL 1	CLB 1	20.0	19.0	30.0	22.0	10.0	8.0	70.0	16.0	6.0
3/4	CL 2	CLB 2	25.0	23.0	33.0	22.0	11.0	8.0	77.0	16.0	6.0
1	CL 3	CLB 3	31.0	28.0	39.0	24.0	12.0	10.0	85.0	16.0	7.0
1-1/4	CL 4	CLB 4	40.0	35.0	47.0	28.0	14.0	10.0	98.0	25.0	8.0
1-1/2	CL 5	CLB 5	44.0	38.0	54.0	28.0	14.0	10.0	105.0	25.0	8.0
2	CL 6	CLB 6	58.0	47.0	68.0	35.0	14.0	12.0	127.0	29.0	8.0
2-1/2	CL 7	CLB 7	73.0	52.0	86.0	35.0	16.0	12.0	145.0	31.0	8.0
3	CL 8	CLB 8	87.0	60.0	102.0	35.0	16.0	13.0	160.0	35.0	8.0
3-1/2	CL 9	CLB 9	97.0	66.0	113.0	35.0	16.0	13.0	182.0	35.0	8.0
4	CL 10	CLB 10	105.0	70.0	120.0	35.0	21.0	13.0	188.0	35.0	8.0

Application

CL clamps and CLB back clamps are used for fixing the rigid steel conduit (RSC), intermediate metal conduit (IMC) or cable in dry, wet or corrosive locations.

- CL clamps are used for fixing the conduit or cable running on surface.
- CLB back clamps are used with CL clamps to provide space between conduit and surface.

Specification

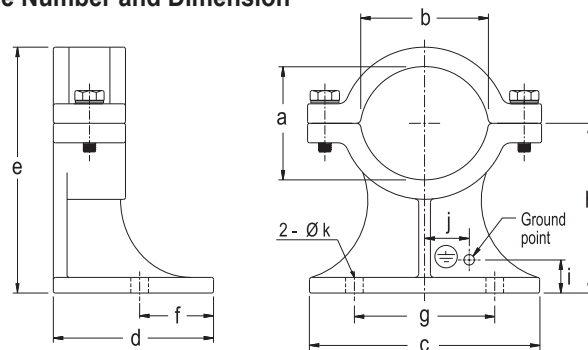
Body material : Marine grade copper-free aluminium alloy with polyester powder coated, RAL 7032 (Grey)

Standard size : 1/2 to 4 inches conduit size

Bracket Clamp



Catalogue Number and Dimension



Conduit Size (inch)	Cat. No.	Dimension in mm.										
		a	b	c	d	e	f	g	h	i	j	ø k
1/2	BC 1	18.0	24.0	72.0	60.0	61.0	30.0	45.0	45.0	14.0	14.0	12.0
3/4	BC 2	23.0	30.0	83.0	60.0	76.0	30.0	50.0	57.0	14.0	14.0	12.0
1	BC 3	30.0	36.0	83.0	60.0	80.0	30.0	50.0	57.0	14.0	14.0	12.0
1-1/4	BC 4	38.0	46.0	111.0	60.0	84.0	30.0	65.0	57.0	14.0	14.0	12.0
1-1/2	BC 5	44.0	52.0	111.0	60.0	87.0	30.0	65.0	57.0	14.0	14.0	12.0
2	BC 6	56.0	63.0	145.0	72.0	124.0	36.0	80.0	87.0	17.0	17.0	14.0
2-1/2	BC 7	69.0	76.0	145.0	72.0	131.0	36.0	80.0	87.0	17.0	17.0	14.0
3	BC 8	84.0	92.0	187.0	90.0	167.0	45.0	100.0	115.0	20.0	20.0	14.0
3-1/2	BC 9	96.0	106.0	187.0	90.0	173.0	45.0	100.0	115.0	20.0	20.0	14.0
4	BC 10	109.0	120.0	187.0	90.0	179.0	45.0	100.0	115.0	20.0	20.0	14.0

Application

BC bracket clamps are used for support and fix the rigid steel conduit (RSC), intermediate metal conduit (IMC) or cable in dry, wet or corrosive location.

Specification

Body material : Marine grade copper-free aluminium alloy with polyester powder coated, RAL 7032 (Grey)

Screw and washer : Stainless steel