



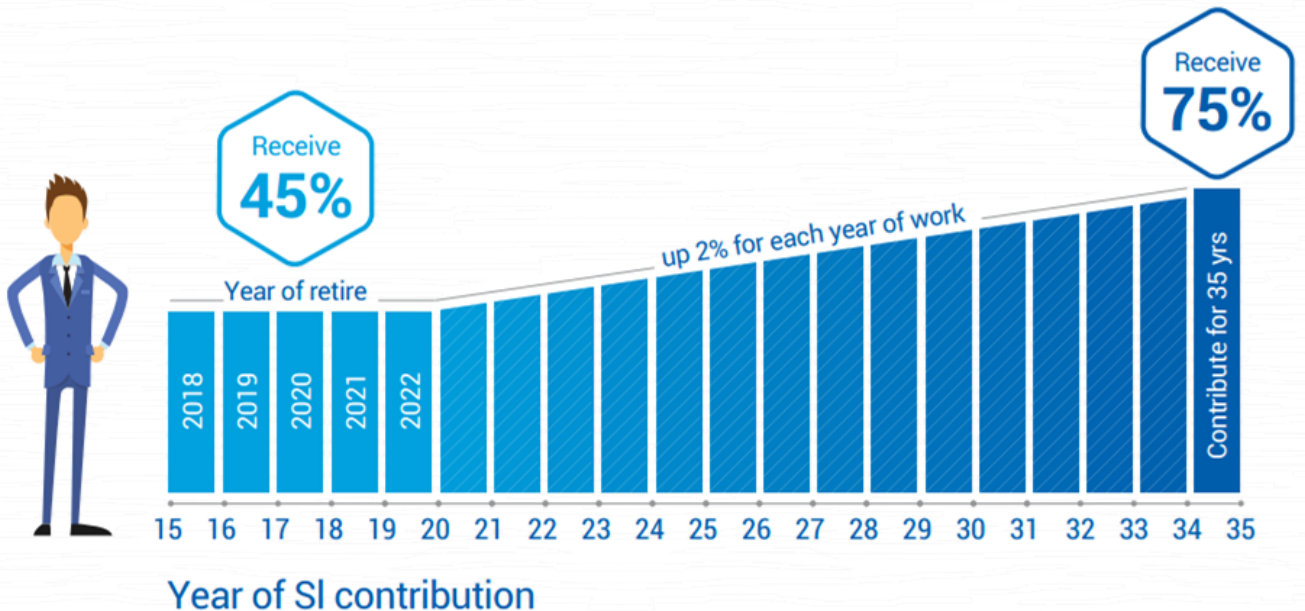
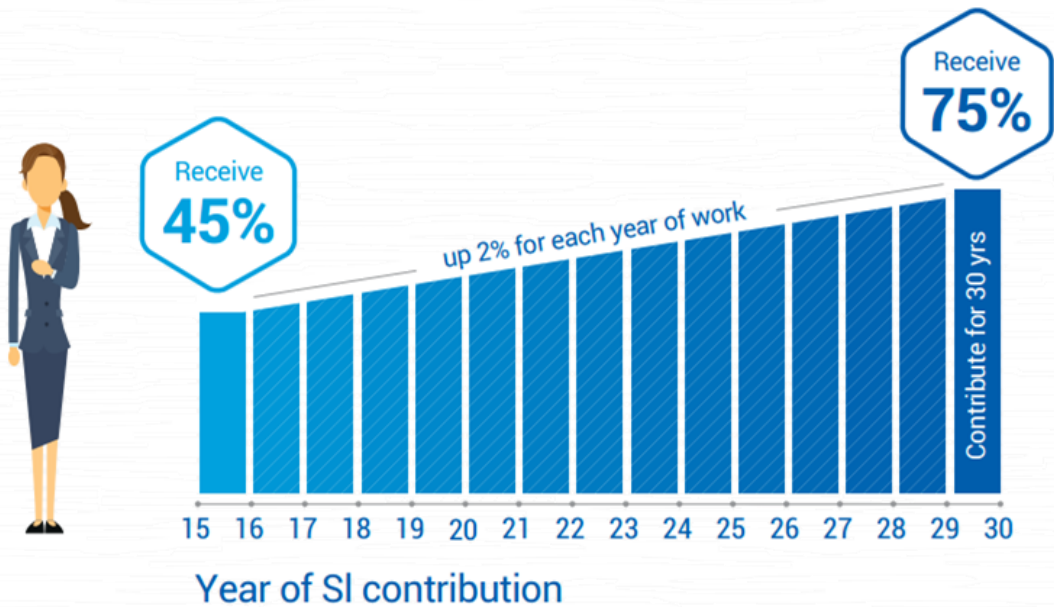
Newsletter

KEY HIGHLIGHTS OF VIETNAM SOCIAL INSURANCE REGULATIONS FROM 01/01/2018

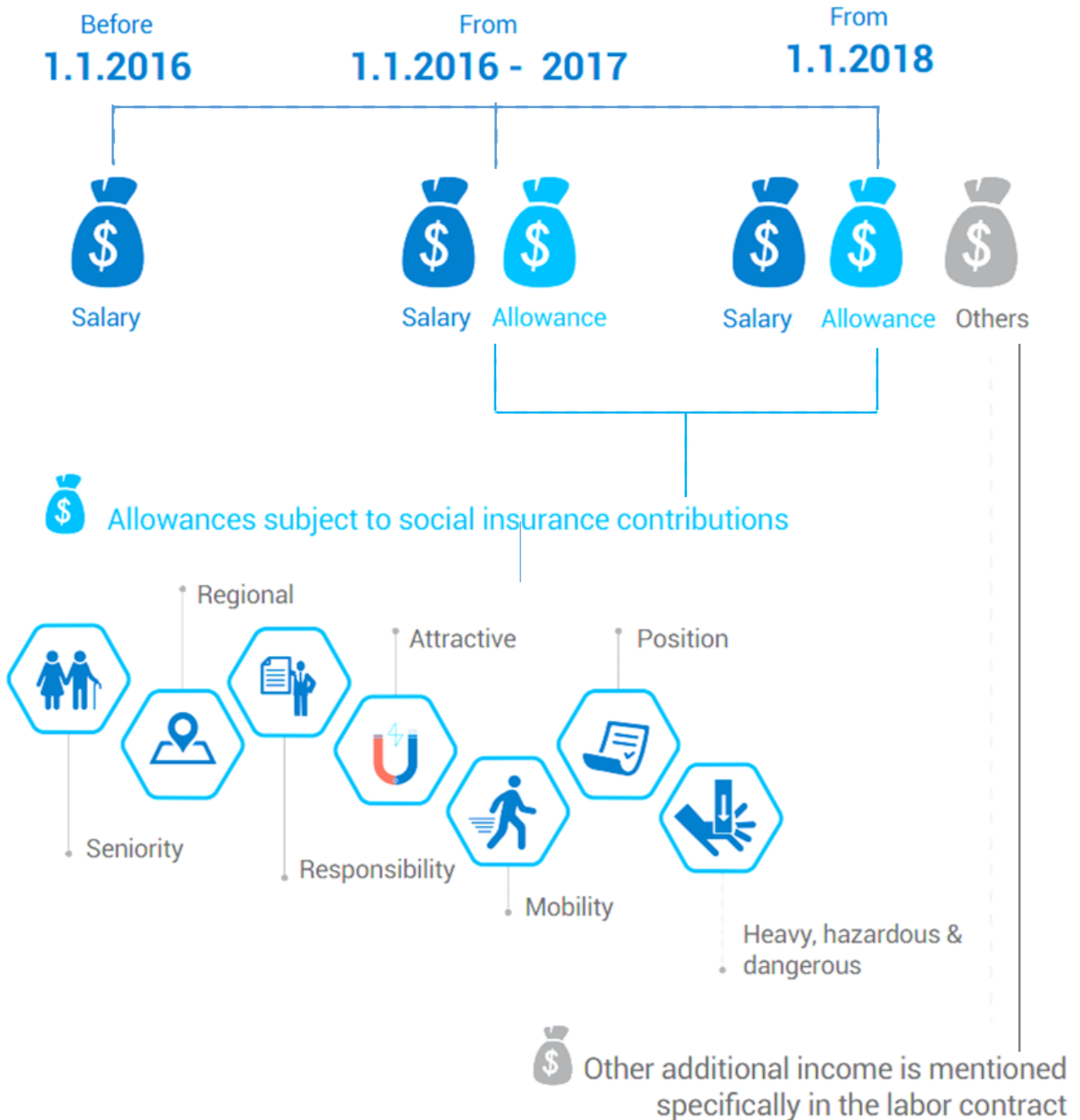
This news-letter has been provided for general reference on matter that you pay attention, and it should not be considered as any professional advice. It is recommended that you should not action upon the information contained in this publication without obtaining specific professional advice.

ESOS accepts no liability responsibility, duty or care for any consequences of you or anyone act or refrain to act, in reliance on the information contained in this publication or for any decision based on it.

PENSION CALCULATIONS TO CHANGE FROM JAN 2018



SUBJECT TO SOCIAL INSURANCE CONTRIBUTIONS FROM JAN 2018



From early of 2018,
FOREIGN WORKERS *in Vietnam*
with a work permit, or a practice certificate or license
MUST CONTRIBUTE INSURANCE

**FOREIGN EMPLOYEE****FOREIGN EMPLOYER****8%**

Social insurance

17.5%**1.5%**

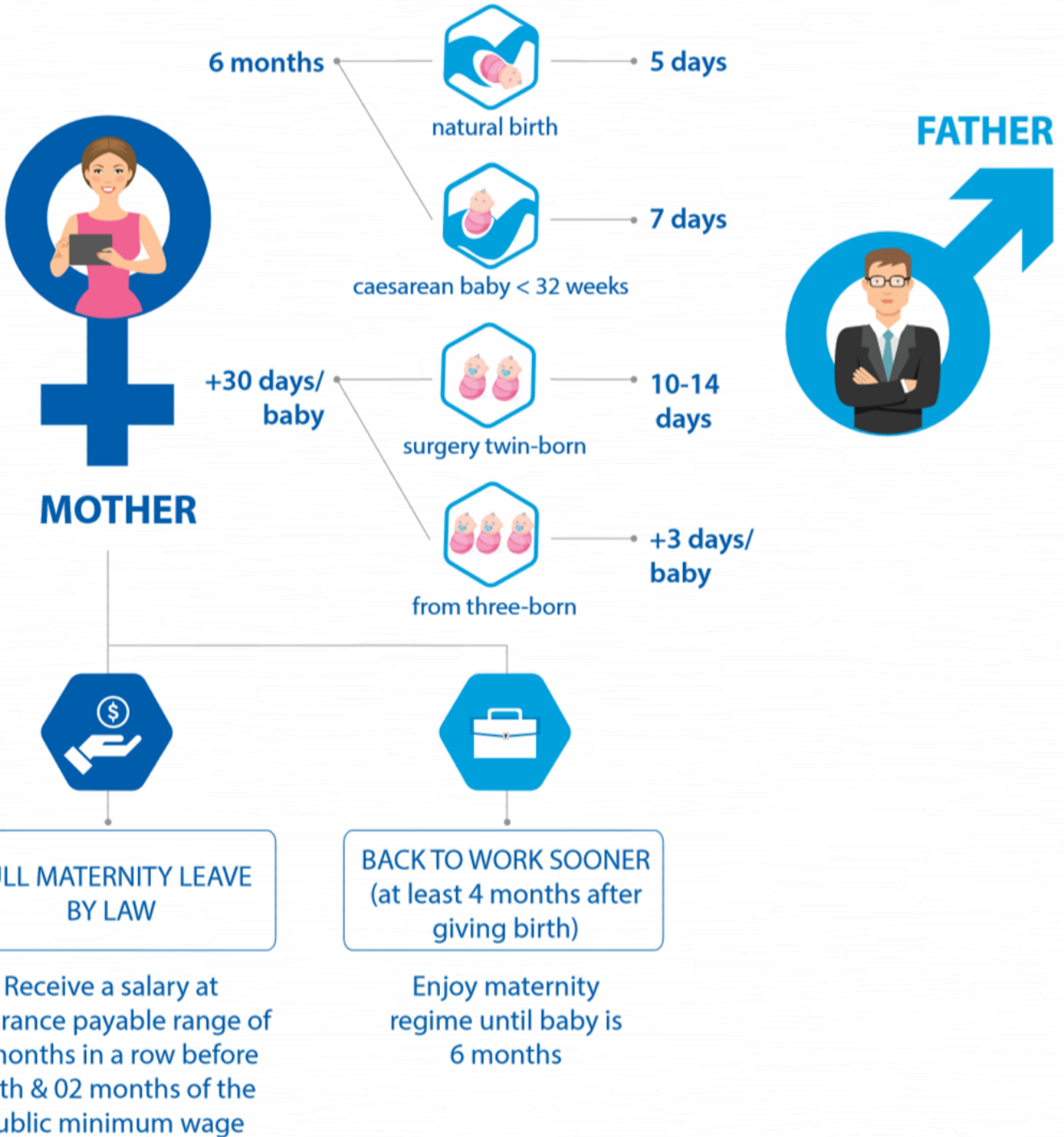
Health insurance

3%

Unemployment insurance

MATERNITY BENEFIT IN VIET NAM

DAY OFF



Our Services:

- ❖ Salary management (calculate, salary disbursement, & provide pay-slip to employee)
- ❖ Calculate and submit Personal Income Tax
- ❖ Personal Income Tax finalization
- ❖ C&B Management
- ❖ Set up Representative Office, Company
- ❖ Renew, change, extend license, close Representative Office, company
- ❖ Set up Retail Agency for Representative Office
- ❖ Expat Services: Visa, Work Permit, Residence Card, etc.



Accuracy
Prompt
Saving



Let's keep in-touch with us:

Hotline: **0902 818 998**